



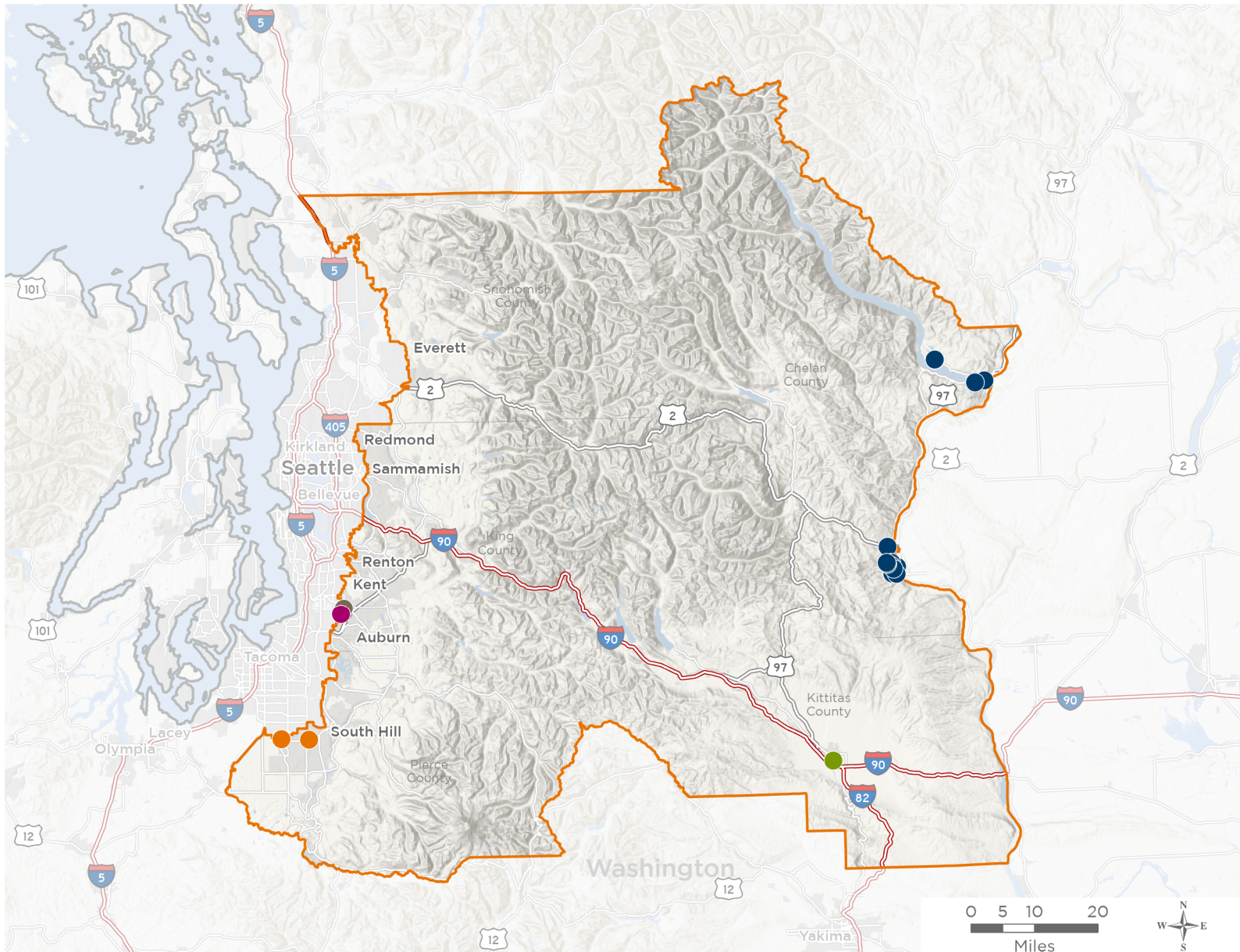
NATIONAL ASSOCIATION OF  
Community Health Centers®

# Representative Kim Schrier

## 119th United States Congress

Washington's **8<sup>TH</sup>** Congressional District

The 5 federally-funded health center organizations with a presence in Washington's 8th Congressional District leverage **\$33,711,162** in federal investments to serve **359,175** patients.



**22**

**NUMBER OF DELIVERY SITES  
IN CONGRESSIONAL DISTRICT**

- Federally-funded Delivery Site (each color represents one organization)
- Health Center Program Look-Alikes
- 119th Congressional District Boundaries
- County Boundaries
- Interstates
- Highways
- Populated Places
- Major Roads

Notes | Delivery sites represent locations of organizations funded by the federal Health Center Program. Health Center Program Look-Alikes are community-based health care providers that meet the requirements of the HRSA Health Center Program, but do not receive Health Center Program funding. Some locations may overlap due to scale or may otherwise not be visible when mapped. Federal investments represent the total funding from the federal Health Center Program to grantees with a presence in the state in 2023.

Sources | Federally-Funded Delivery Site Locations and Health Center Program Look-Alikes: data.HRSA.gov, November 2024. Health Center Patients and Federal Funding | 2024 Uniform Data System, Bureau of Primary Health Care, HRSA.



22

## NUMBER OF DELIVERY SITES IN CONGRESSIONAL DISTRICT

(main organization in bold)

### ● **COLUMBIA VALLEY COMMUNITY HEALTH**

CVCH Behavioral Health | 504 Orondo Ave STE A Wenatchee, WA 98801-2830  
CVCH Chelan Clinic | 105 S Apple Blossom Dr Chelan, WA 98816-8810  
CVCH Chelan MS/HS School Health Center | 215 Webster Ave Chelan, WA 98816-9806  
CVCH Children's Behavioral Health | 140 Easy Way Wenatchee, WA 98801-8108  
CVCH Columbia Elementary School Health Center | 600 Alaska St Wenatchee, WA 98801-2875  
CVCH Columbia Pediatrics | 933 Red Apple Rd STE C Wenatchee, WA 98801-3370  
CVCH Connect Mobile Unit | 140 Easy Way Wenatchee, WA 98801-8108  
CVCH Connect Van | 600 Orondo Ave Wenatchee, WA 98801-2800  
CVCH Hope Health | 145 S Worthen St Wenatchee, WA 98801-3081  
CVCH Lincoln Elementary School Health Center | 1224 Methow St Wenatchee, WA 98801-3552  
CVCH Manson Elementary School Health Center | 950 Totem Pole Rd Manson, WA 98831-9418  
CVCH Manson Secondary School Health Center | 1000 Totem Pole Rd Manson, WA 98831-9419  
CVCH New Path | 819 N Miller St STE 1B Wenatchee, WA 98801-6604  
CVCH Orchard Middle School Health Center | 1024 Orchard Ave Wenatchee, WA 98801-1945  
CVCH Wenatchee Clinic | 600 Orondo Ave, Ste 1 Wenatchee, WA 98801-2800  
CVCH Wenatchee Valley College Clinic | 1300 5th St Wenatchee, WA 98801-1741  
CVCH West Side High School Health Center | 1510 9th St Wenatchee, WA 98801-1656

### ● **COMMUNITY HEALTH CARE**

Graham-Kapowsin SBHC | 22100 108th Ave E Graham, WA 98338-8871  
SBHC at Bethel Middle School | 22001 38th Ave E RM 111 Spanaway, WA 98387-6875

### ● **COMMUNITY HEALTH OF CENTRAL WASHINGTON**

CHCW - Ellensburg Medical and Dental Services | 521 E Mountain View Ave Ellensburg, WA 98926-3865

### ● **KING COUNTY**

KENT PUBLIC HEALTH CENTER-Birch Creek | 13111 SE 274th St Kent, WA 98030-8929

### ● **SEA MAR COMMUNITY HEALTH CENTERS**

Sea Mar CHC - Auburn Mountainview High School | 28900 124th Ave SE Auburn, WA 98092-3101