



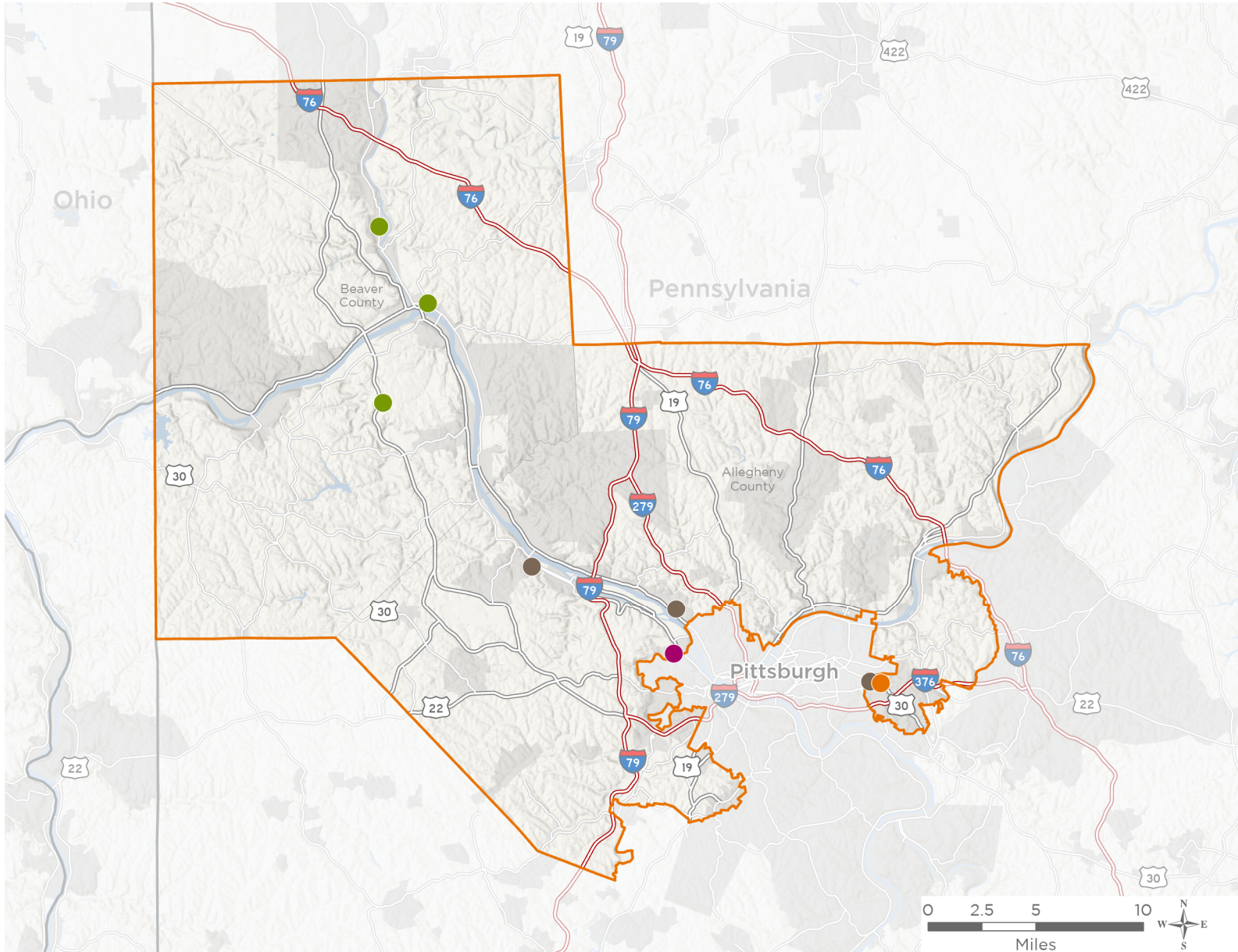
NATIONAL ASSOCIATION OF
Community Health Centers®

Representative Chris Deluzio

119th United States Congress

Pennsylvania's **17TH** Congressional District

The 5 federally-funded health center organizations with a presence in Pennsylvania's 17th Congressional District leverage **\$23,437,168** in federal investments to serve **107,206** patients.



10

NUMBER OF DELIVERY SITES IN CONGRESSIONAL DISTRICT

- Federally-funded Delivery Site (each color represents one organization)
- Health Center Program Look-Alikes
- 119th Congressional District Boundaries
- County Boundaries
- Interstates
- Highways
- Populated Places
- Major Roads

Notes | Delivery sites represent locations of organizations funded by the federal Health Center Program. Health Center Program Look-Alikes are community-based health care providers that meet the requirements of the HRSA Health Center Program, but do not receive Health Center Program funding. Some locations may overlap due to scale or may otherwise not be visible when mapped. Federal investments represent the total funding from the federal Health Center Program to grantees with a presence in the state in 2023.

Sources | Federally-Funded Delivery Site Locations and Health Center Program Look-Alikes: data.HRSA.gov, November 2024. Health Center Patients and Federal Funding | 2024 Uniform Data System, Bureau of Primary Health Care, HRSA.



NATIONAL ASSOCIATION OF
Community Health Centers®

Representative Chris Deluzio
119th United States Congress

Pennsylvania's **17TH** Congressional District

10

NUMBER OF DELIVERY SITES IN CONGRESSIONAL DISTRICT

(main organization in bold)

● **EAST LIBERTY FAMILY HEALTH CARE CENTER, INC.**

Wilkesburg Dental Office | 807 Wallace Ave Pittsburgh, PA 15221-2312

● **PRIMARY CARE HEALTH SERVICES INC**

Wilkesburg Family Health Center | 807 Wallace Ave Pittsburgh, PA 15221-2312

● **PRIMARY HEALTH NETWORK**

Autumn Street Health Center | 99 Autumn St Aliquippa, PA 15001-1301

Beaver Falls Health Center Primary Care | 1302 7th Ave Beaver Falls, PA 15010-4217

Rochester Health Center | 176 Virginia Ave Rochester, PA 15074-1723

● **SQUIRREL HILL HEALTH CENTER**

Mooncrest Neighborhood Programs | 308 Hemlock Dr Moon Township, PA 15108-1317

POWER | 907 West St STE 2 Wilkesburg, PA 15221-2841

SHHC Bellevue | 100 S Jackson Ave Pittsburgh, PA 15202-3428

● **STO-ROX NEIGHBORHOOD HEALTH COUNCIL, INC.**

SRNHC Mobile Health Unit | 710 Thompson Ave Mc Kees Rocks, PA 15136-3808

STO-ROX Family Health Center | 710 Thompson Ave Mc Kees Rocks, PA 15136-3808