



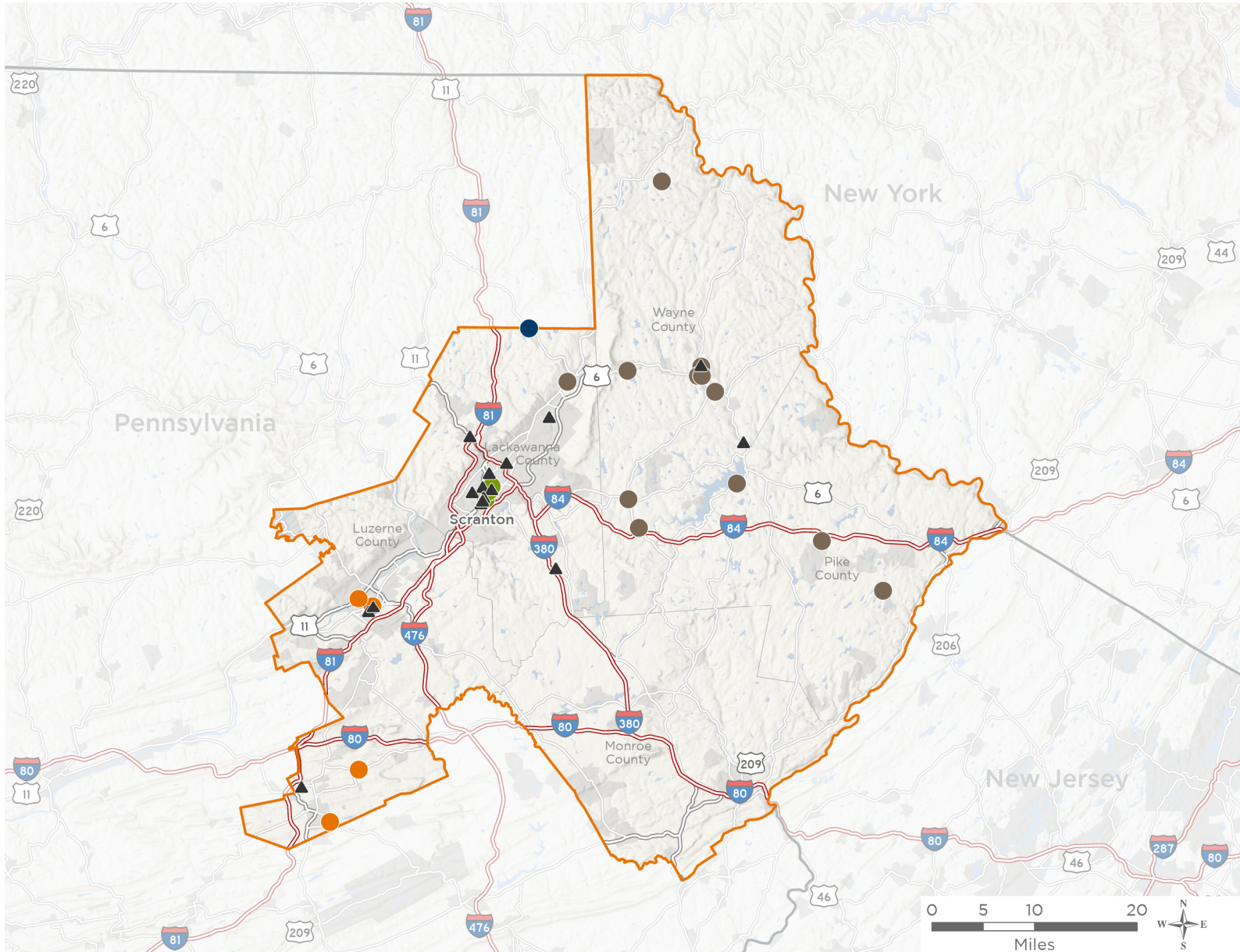
NATIONAL ASSOCIATION OF
Community Health Centers®

Representative Rob Bresnahan

119th United States Congress

Pennsylvania's **8TH** Congressional District

The 4 federally-funded health center organizations with a presence in Pennsylvania's 8th Congressional District leverage **\$8,126,096** in federal investments to serve **83,639** patients.



26

NUMBER OF DELIVERY SITES IN CONGRESSIONAL DISTRICT

- ● ● Federally-funded Delivery Site (each color represents one organization)
- ▲ Health Center Program Look-Alikes
- 119th Congressional District Boundaries
- County Boundaries
- Populated Places
- Interstates
- Highways
- Major Roads

Notes | Delivery sites represent locations of organizations funded by the federal Health Center Program. Health Center Program Look-Alikes are community-based health care providers that meet the requirements of the HRSA Health Center Program, but do not receive Health Center Program funding. Some locations may overlap due to scale or may otherwise not be visible when mapped. Federal investments represent the total funding from the federal Health Center Program to grantees with a presence in the state in 2023.

Sources | Federally-Funded Delivery Site Locations and Health Center Program Look-Alikes: data.HRSA.gov, November 2024. Health Center Patients and Federal Funding | 2024 Uniform Data System, Bureau of Primary Health Care, HRSA.



26

NUMBER OF DELIVERY SITES IN CONGRESSIONAL DISTRICT

(main organization in bold)

● **B-K HEALTH CENTER INC.**

Andrew C. Mazza Memorial Health Center | 127 Route 106 Greenfield Township, PA 18407-3526

● **RURAL HEALTH CORPORATION OF NORTHEASTERN PENNSYLVANIA**

Freeland Health Center | 404 Ridge St Freeland, PA 18224-1802

Hazleton Pediatrics | 1730 E Broad St Hazleton, PA 18201-5657

McKinney Clinic | 39 E Jackson St Wilkes Barre, PA 18701-2709

Valley Medical | 75 S Wyoming Ave Kingston, PA 18704-3103

● **SCRANTON PRIMARY HEALTH CARE CENTER INC**

Alder Street | 425 Alder St Scranton, PA 18505-4116

Lackawanna College | 406 N Washington Ave Scranton, PA 18503-1306

Scranton Primary Health Care Center, Inc. | 959 Wyoming Ave Scranton, PA 18509-3023

● **WAYNE MEMORIAL COMMUNITY HEALTH CENTERS**

Carbondale Family Health Center | 150 Brooklyn St Carbondale, PA 18407-2274

Hamlin Family Health Center | 543 Easton Tpke Lake Ariel, PA 18436-4718

Highland Physicians Family Health Center | 1839 Fair Ave Honesdale, PA 18431-2121

Honesdale Behavioral Health | 600 Maple Ave, Ste 15 Honesdale, PA 18431-1460

Honesdale Family Health Center | 600 Maple Ave STE 2 Honesdale, PA 18431-1436

Honesdale Pediatric Center | 1837 Fair Ave Honesdale, PA 18431-2121

Honesdale Podiatry | 600 Maple Ave STE 4 Honesdale, PA 18431-1436

Lake Region Walk-in | 273 Grandview Ave Honesdale, PA 18431-1163

Northern Wayne Family Health Center | 412 Como Rd Lake Como, PA 18437-1020

Pike County Dental Center | 750 Route 739 Hawley, PA 18428-6058

Pike Family Health Center | 750 Route 739 Hawley, PA 18428-6058

Pinnacle Family Health Center | 132 Manly Rd Tafton, PA 18464-7829

Sterling Pediatric Center | 62 Industrial Park Rd Lake Ariel, PA 18436-5606

Together For Health Dental Center | 600 Maple Ave STE 7 Honesdale, PA 18431-1460

Waymart Family Health Center | 29 Woodlands Dr Waymart, PA 18472-9366

Waymart Pediatric Center | 27B Woodlands Dr Waymart, PA 18472-9366

Women's Health Center | 626 Park St Honesdale, PA 18431-1446

Women's Health of Pike County | 1592 Route 739 STE 2 Dingmans Ferry, PA 18328-3513

▲ **HEALTH CENTER PROGRAM LOOK-ALIKES**

Health Center Program Look-Alikes are community-based health care providers that meet the requirements of the HRSA Health Center Program, but do not receive Health Center Program funding.

CARING COMMUNITY HEALTH CENTER

Caring Community Health Center - Hazleton | 426 Airport Rd Hazleton, PA 18202-3361



NATIONAL ASSOCIATION OF
Community Health Centers®

Representative Rob Bresnahan
119th United States Congress

Pennsylvania's **8TH** Congressional District

26

NUMBER OF DELIVERY SITES IN CONGRESSIONAL DISTRICT

(main organization in bold)

Caring Community Health Center - Kistler Clinic | 175 S Wilkes Barre Blvd Wilkes Barre, PA 18702-5040

Caring Community Health Center - Mount Pleasant | 531 Mt Pleasant Dr Scranton, PA 18503-1987

THE WRIGHT CENTER MEDICAL GROUP

The Wright Center for Community Health Clarks Summit Practice | 1145 Northern Blvd South Abington Township, PA 18411-2221

The Wright Center for Community Health Dickson City Practice | 312 Boulevard Ave Scranton, PA 18519-1731

The Wright Center for Community Health Driving Better Health | 5 S Washington Ave Jermyn, PA 18433-1121

The Wright Center for Community Health Hawley Practice | 103 Spruce St Hawley, PA 18428-1149

The Wright Center for Community Health Mid Valley Practice | 5 S Washington Ave Jermyn, PA 18433-1121

The Wright Center for Community Health North Pocono Practice | 260 Daleville Hwy STE 103 Covington Township, PA 18444-7951

The Wright Center for Community Health North Scranton Practice | 1721 N Main Ave Scranton, PA 18508-1995

The Wright Center for Community Health Northeast Scranton Intermediate School | 721 Adams Ave Scranton, PA 18510-1603

The Wright Center for Community Health School Based Practice | 1401 Fellows St Scranton, PA 18504-2222

The Wright Center for Community Health Scranton Counseling Practice | 329 Cherry St Scranton, PA 18505-1505

The Wright Center for Community Health Scranton Practice | 501 S Washington Ave Scranton, PA 18505-3814

The Wright Center for Community Health South Scranton Intermediate School | 355 Maple St Scranton, PA 18505-1215

The Wright Center for Community Health Wayne Practice | 1855 Fair Ave Honesdale, PA 18431-2121

The Wright Center for Community Health Wilkes-Barre Practice | 169 N Pennsylvania Ave Wilkes Barre, PA 18701-3603