



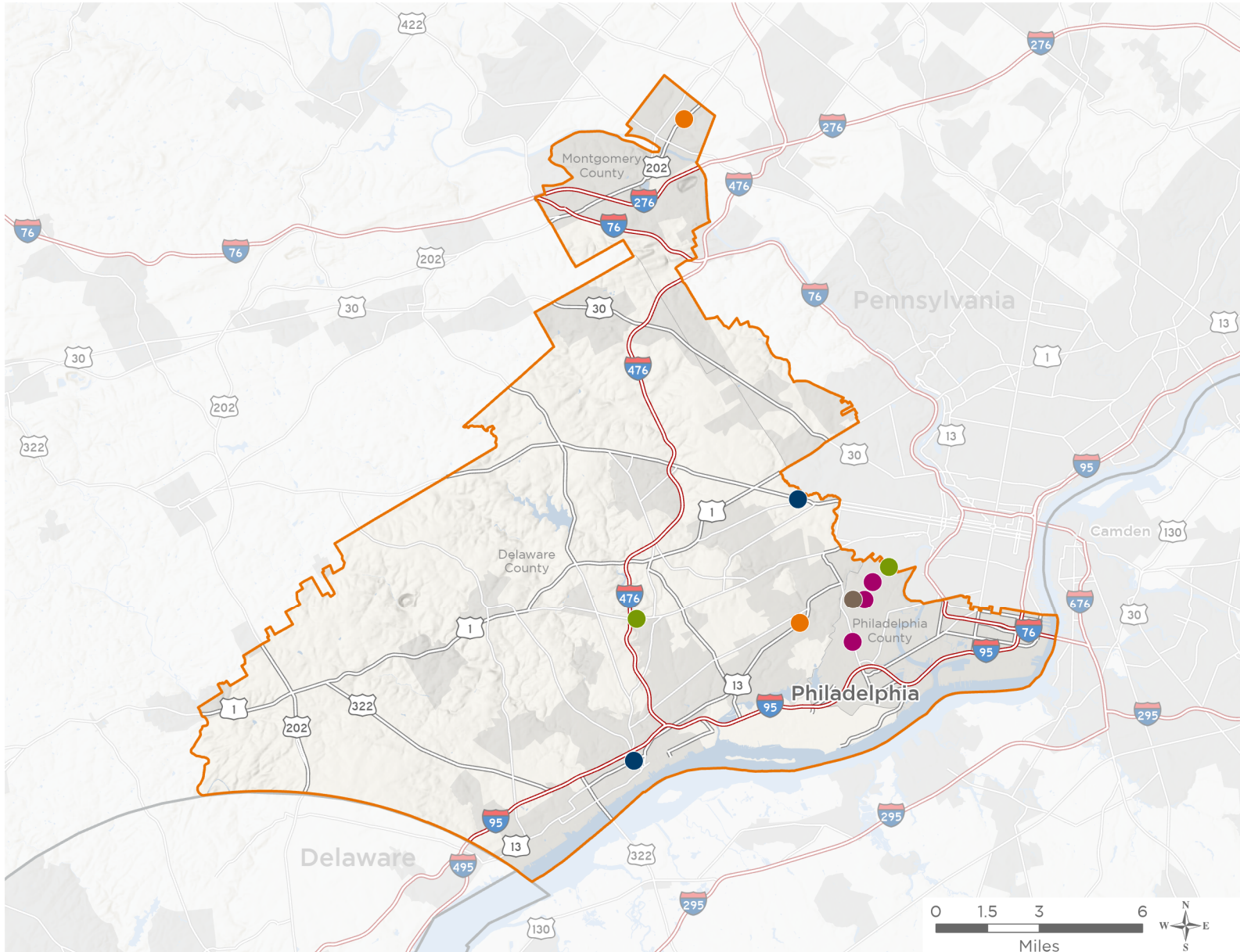
NATIONAL ASSOCIATION OF
Community Health Centers®

Representative Mary Gay Scanlon

119th United States Congress

Pennsylvania's **5TH** Congressional District

The 5 federally-funded health center organizations with a presence in Pennsylvania's 5th Congressional District leverage **\$29,962,559** in federal investments to serve **172,151** patients.



10

NUMBER OF DELIVERY SITES IN CONGRESSIONAL DISTRICT

- ● ● Federally-funded Delivery Site (each color represents one organization)
- ▲ Health Center Program Look-Alikes
- 119th Congressional District Boundaries
- County Boundaries
- Interstates
- Highways
- Major Roads
- Populated Places

Notes | Delivery sites represent locations of organizations funded by the federal Health Center Program. Health Center Program Look-Alikes are community-based health care providers that meet the requirements of the HRSA Health Center Program, but do not receive Health Center Program funding. Some locations may overlap due to scale or may otherwise not be visible when mapped. Federal investments represent the total funding from the federal Health Center Program to grantees with a presence in the state in 2023.

Sources | Federally-Funded Delivery Site Locations and Health Center Program Look-Alikes: data.HRSA.gov, November 2024. Health Center Patients and Federal Funding | 2024 Uniform Data System, Bureau of Primary Health Care, HRSA.



10

NUMBER OF DELIVERY SITES IN CONGRESSIONAL DISTRICT

(main organization in bold)

● CHESPENN HEALTH SERVICES, INC

ChesPenn Center for Family Health at Eastside | 125 E 9th St Chester, PA 19013-6019

ChesPenn Center for Family Health at Upper Darby | 5 S State Rd Upper Darby, PA 19082-2037

● DELAWARE VALLEY COMMUNITY HEALTH, INC.

Fairmount Primary Care Center at Sharon Hill-Delaware County | 800 Chester Pike Sharon Hill, PA 19079-1400

Norristown Regional Health Center | 1401 Dekalb St Norristown, PA 19401-3405

● GREATER PHILADELPHIA HEALTH ACTION INC

GPHA - Spectrum Behavioral Healthcare Center | 1489 Baltimore Pike STE 300 STE 300 Springfield, PA 19064-3971

Greater Philadelphia Health Action, Inc. Dental and Behavioral Healthcare | 5501 Woodland Ave Philadelphia, PA 19143-5607

● PUBLIC HEALTH MANAGEMENT CORP

Outley House | 6901 Woodland Ave Philadelphia, PA 19142-1159

● RESOURCES FOR HUMAN DEVELOPMENT, INC.

FPCN at Bartram High School | 2401 S 67th St Philadelphia, PA 19142-2229

FPCN at Shoprite Island Avenue | 2900 Island Ave Philadelphia, PA 19153-2028

The Health Annex | 6120 Woodland Ave Philadelphia, PA 19142-3224