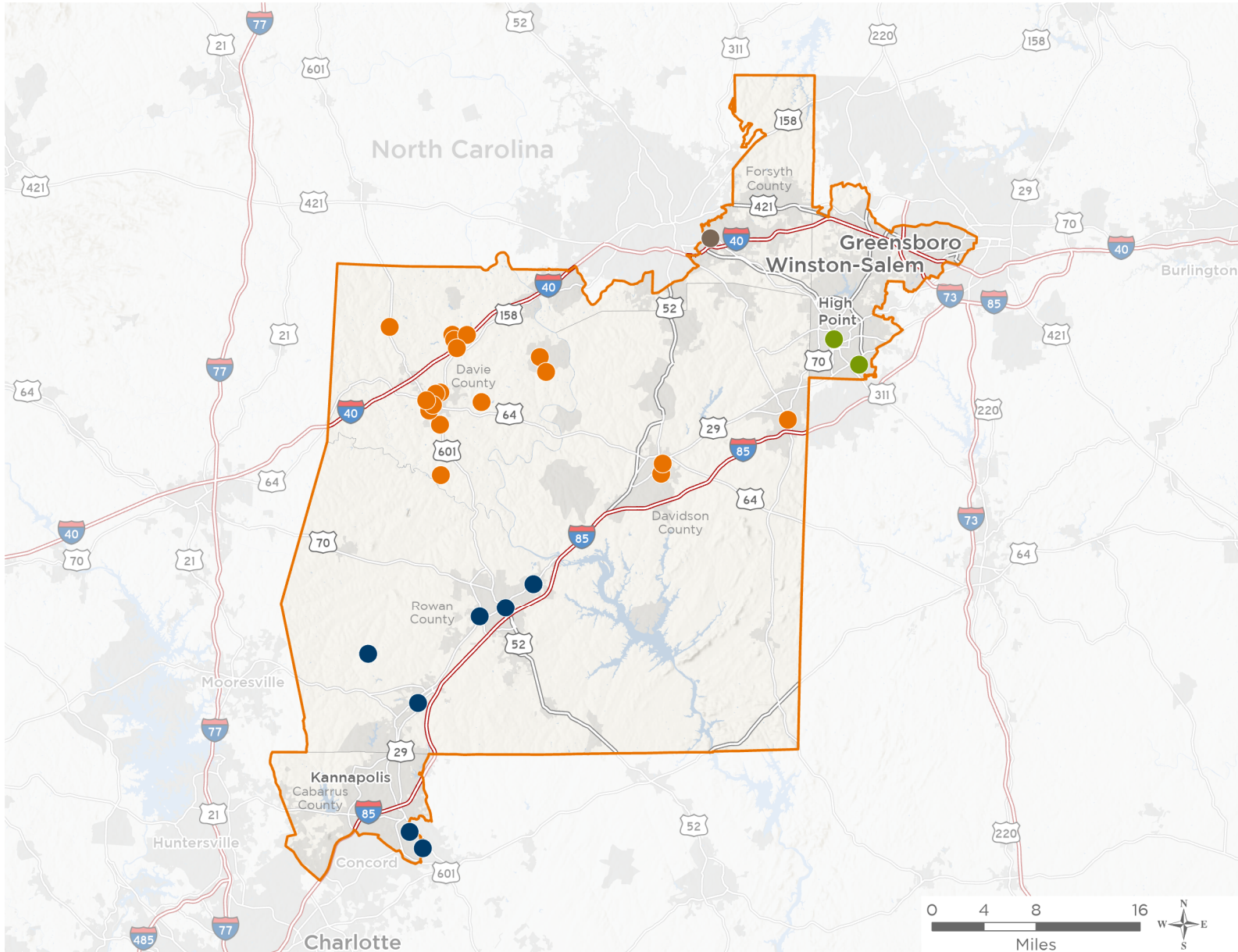




The 4 federally-funded health center organizations with a presence in North Carolina's 6th Congressional District leverage **\$19,346,725** in federal investments to serve **132,643** patients.



33

**NUMBER OF DELIVERY SITES
IN CONGRESSIONAL DISTRICT**

- Federally-funded Delivery Site (each color represents one organization)
- Health Center Program Look-Alikes
- 119th Congressional District Boundaries
- County Boundaries
- Interstates
- Highways
- Populated Places
- Major Roads

Notes | Delivery sites represent locations of organizations funded by the federal Health Center Program. Health Center Program Look-Alikes are community-based health care providers that meet the requirements of the HRSA Health Center Program, but do not receive Health Center Program funding. Some locations may overlap due to scale or may otherwise not be visible when mapped. Federal investments represent the total funding from the federal Health Center Program to grantees with a presence in the state in 2023.

Sources | Federally-Funded Delivery Site Locations and Health Center Program Look-Alikes: data.HRSA.gov, November 2024. Health Center Patients and Federal Funding | 2024 Uniform Data System, Bureau of Primary Health Care, HRSA.



33

NUMBER OF DELIVERY SITES IN CONGRESSIONAL DISTRICT

(main organization in bold)

CABARRUS COMMUNITY HEALTH CENTERS, INC.

- China Grove Family Medicine | 307 East Thom Street China Grove, NC 28023-2363
- CRCHC Homeless Clinic at Rowan Helping Ministries | 226 N Long St Salisbury, NC 28144-5049
- CRCHC Mobile Dental Unit | 202D McGill Ave NW Concord, NC 28025-4615
- CRCHC Mobile Unit | 202D McGill Ave NW Concord, NC 28025-4615
- CRCHC Patterson Farm Migrant Clinic | 3060 Millbridge Rd China Grove, NC 28023-7716
- Logan Family Medicine | 298 Lincoln St SW Concord, NC 28025-5469
- Mcgill Family Medicine | 202D McGill Ave NW Concord, NC 28025-4615
- Northern Rowan Family Medicine | 300 N Salisbury Ave Spencer, NC 28159-2514
- Salisbury Health Center | 330 West Jake Alexander Boulevard, #102 Salisbury, NC 28147

GASTON FAMILY HEALTH SERVICES, INC.

- Kintegra at Central Davie Academy | 160 Martin Luther King Jr Rd Mocksville, NC 27028-7780
- Kintegra at Cooleemee Elementary | 136 Marginal St Cooleemee, NC 27014-0168
- Kintegra at Cornatzer Elementary | 529 Cornatzer Rd Mocksville, NC 27028-7129
- Kintegra at Davie County Early College | 1211 Salisbury Rd Mocksville, NC 27028-9302
- Kintegra at Davie County High | 180 War Eagle Dr Mocksville, NC 27028-6151
- Kintegra at Mocksville Elementary | 295 Cemetery St Mocksville, NC 27028-2103
- Kintegra at North Davie Middle | 497 Farmington Rd Mocksville, NC 27028-7639
- Kintegra at Pinebrook Elementary | 477 Pinebrook School Rd Mocksville, NC 27028-7749
- Kintegra at Shady Grove Elementary | 3179 Cornatzer Rd Advance, NC 27006-7212
- Kintegra at South Davie Middle | 197 S Davie Dr Mocksville, NC 27028-2927
- Kintegra at William Ellis Middle | 144 William Ellis Dr Advance, NC 27006-7990
- Kintegra at William R. Davie Elementary | 3437 US Highway 601 N Mocksville, NC 27028-6259
- Kintegra Behavioral Health - Mocksville | 172 S Clement St Mocksville, NC 27028-2336
- Kintegra Family Dentistry - Lexington | 32 Kirkwood Ave Lexington, NC 27292-4024
- Kintegra Family Dentistry - Mocksville | 100 Ridgeview Dr Mocksville, NC 27028-2020
- Kintegra Family Medicine - Lexington | 420 N Salisbury St Lexington, NC 27292-3548
- Kintegra Family Medicine - Mocksville | 154 Government Center Dr Mocksville, NC 27028-6299
- Kintegra Family Medicine - Thomasville | 611 Randolph St Thomasville, NC 27360-5126
- Kintegra Mobile Dentistry Unit - Randolph | 611 Randolph St Thomasville, NC 27360-5126
- Kintegra Mobile Dentistry Unit East | 420 N Salisbury St Lexington, NC 27292-3548
- Kintegra Mobile Health | 420 N Salisbury St Lexington, NC 27292-3548

TRIAD ADULT & PEDIATRIC MEDICINE, INC.

- Family Medicine at Elm | 606 N Elm St High Point, NC 27262-4332
- TAPM Family Medicine at Brentwood | 2039 Brentwood St High Point, NC 27263-1805

UNITED HEALTH CENTERS

- United Health Centers | 3009A Waughtown St Winston Salem, NC 27107-1634