

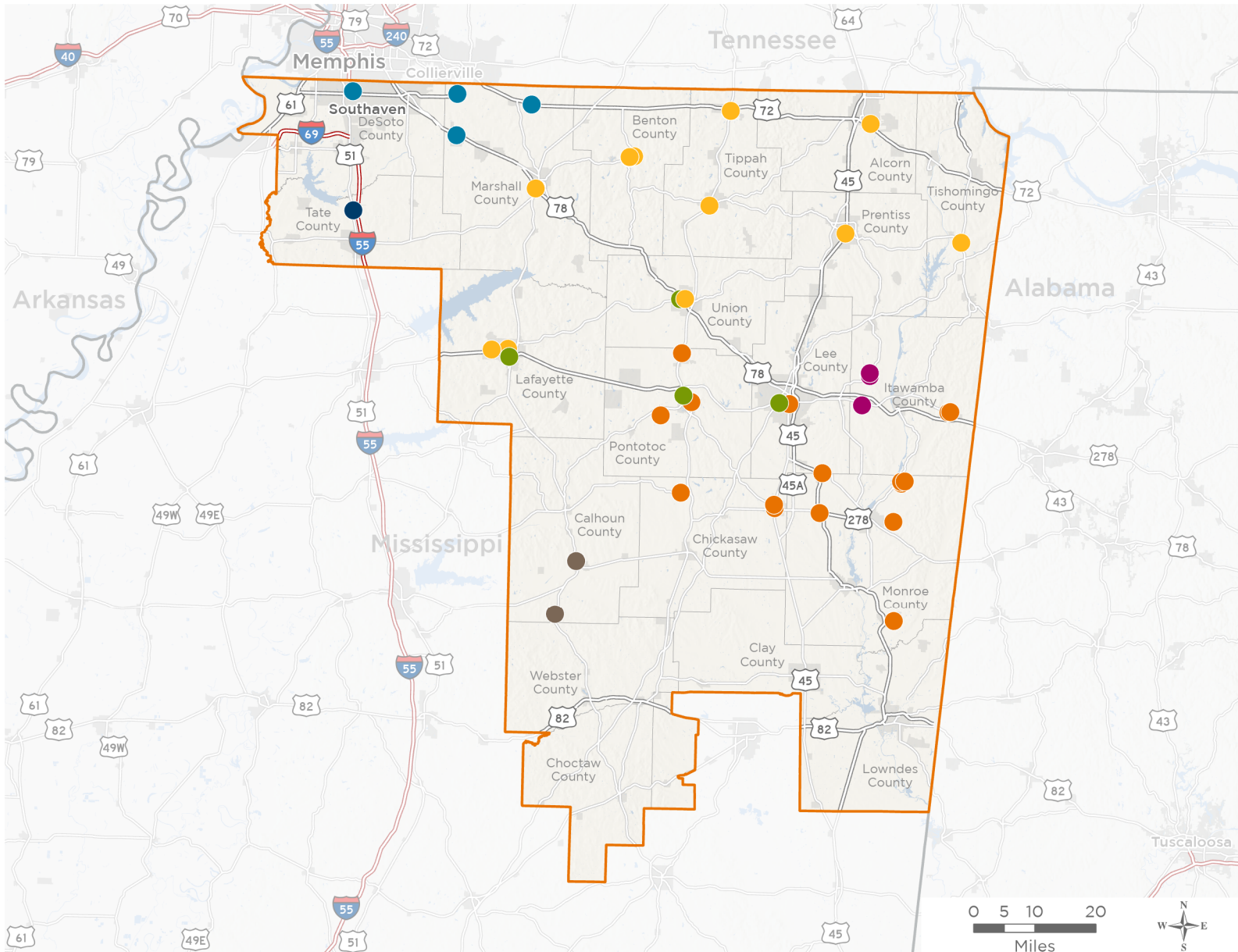


NATIONAL ASSOCIATION OF
Community Health Centers®

Representative Trent Kelly 119th United States Congress

Mississippi's **1ST** Congressional District

The 7 federally-funded health center organizations with a presence in Mississippi's 1st Congressional District leverage **\$36,334,315** in federal investments to serve **200,719** patients.



- Federally-funded Delivery Site (each color represents one organization)
- Health Center Program Look-Alikes
- 119th Congressional District Boundaries
- County Boundaries
- Populated Places
- Interstates
- Highways
- Major Roads

52 NUMBER OF DELIVERY SITES
IN CONGRESSIONAL DISTRICT

Notes | Delivery sites represent locations of organizations funded by the federal Health Center Program. Health Center Program Look-Alikes are community-based health care providers that meet the requirements of the HRSA Health Center Program, but do not receive Health Center Program funding. Some locations may overlap due to scale or may otherwise not be visible when mapped. Federal investments represent the total funding from the federal Health Center Program to grantees with a presence in the state in 2023.

Sources | Federally-Funded Delivery Site Locations and Health Center Program Look-Alikes: data.HRSA.gov, November 2024. Health Center Patients and Federal Funding | 2024 Uniform Data System, Bureau of Primary Health Care, HRSA.



52

NUMBER OF DELIVERY SITES IN CONGRESSIONAL DISTRICT

(main organization in bold)

AARON E. HENRY COMMUNITY HEALTH SERVICES CENTER, INC

M.J. Edwards Center | 643 W Service Dr Coldwater, MS 38618-3822

ACCESS FAMILY HEALTH SERVICES, INC

Access Family Dental Clinic | 60024 Olive St Smithville, MS 38870-9719

Access Family Health Services - Houlka | 106 Walker St Houlka, MS 38850-9453

Access Family Health Services - Nettleton | Highway 45 N Nettleton, MS 38858-8325

ACCESS Family Health Services - Smithville | 60021 Monroe St Smithville, MS 38870-7779

Access Family Health Services - Tremont | 12725 Highway 23 N Tremont, MS 38876-8735

Access Family Health Services - Tupelo | 499 Gloster Creek Vlg Tupelo, MS 38801-4600

Access Mobile Health Clinic | 60021 Monroe St Smithville, MS 38870-7779

Access School Health-Hamilton | 40201 Hamilton Rd Hamilton, MS 39746-8648

Access School Health-Hatley | 60286 Hatley Rd Amory, MS 38821-7215

Access School Health-North Pontotoc | 8324 Highway 15 N Ecru, MS 38841-9749

Access School Health-Okolona Elementary | 411 W Main St Okolona, MS 38860-1307

Access School Health-Okolona High | 404 Dr Howard Gunn St Okolona, MS 38860-1015

Access School Health-South Pontotoc | 1523 S Pontotoc Rd Pontotoc, MS 38863-9382

Access School Health - Nettleton | 179 Mullen Ave Nettleton, MS 38858-6033

Access School Health - Pontotoc Main | 135 E Oxford St Pontotoc, MS 38863-2111

Access School Health - Smithville | 60017 Highway 23 Smithville, MS 38870-9442

Access School Health - Tremont | 320 School Loop Dr Tremont, MS 38876-8575

ARCARE

MississippiCare-129 | 2173 S Lamar Blvd Oxford, MS 38655-5223

MississippiCare - 113 | 353 Highway 15 N Pontotoc, MS 38863-1103

MississippiCare - 126 | 232 Starlyn Ave New Albany, MS 38652-2428

MississippiCare - 127 | 65 S Thomas St Tupelo, MS 38801-4352

FAMILY HEALTH CARE CLINIC, INC.

Family Health Care Clinic, Calhoun City--Head Start | 125 Carter Dr Calhoun City, MS 38916-7028

Family Health Care Clinic, Inc., Calhoun City | 105 Legion Ave Calhoun City, MS 38916-6601

MANTACHIE RURAL HEALTH CARE INC.

Mantachie Medical Mobile Unit | 5681A Highway 363 Mantachie, MS 38855-7632

Mantachie Rural Health Care Behavioral Health Clinic | 5510 Highway 363 Mantachie, MS 38855-7197

Mantachie Rural Health Care, Inc. | 5681 Highway 363 Mantachie, MS 38855-7632

Mantachie Rural Health Care, Inc. Dental | 5500 Highway 363 Mantachie, MS 38855-7197

Mantachie Rural Health Care, Inc. Dorsey School Based Clinic | 1 Dorsey School Rd Fulton, MS 38843-8899

Mantachie Rural Health Care, Inc. School Based Clinic | 311 Mustang Dr Mantachie, MS 38855



NATIONAL ASSOCIATION OF
Community Health Centers®

Representative Trent Kelly
119th United States Congress

Mississippi's **1ST** Congressional District

52

NUMBER OF DELIVERY SITES IN CONGRESSIONAL DISTRICT

(main organization in bold)

● **NORTH MS PRIMARY HEALTH CARE INC**

Benton Medical Center | 15921 Boundary Dr Ashland, MS 38603-7740
Booneville Community Health Center | 208 N 1st St Booneville, MS 38829-2718
Charger Health and Wellness | 399 N 5th St Oxford, MS 38655-3600
Corinth Health Care Associates | 1415 S Harper Rd Corinth, MS 38834-6613
Mobile Unit | 15921 Boundary Dr Ashland, MS 38603-7740
New Albany Health Care Associates | 488 W Bankhead St New Albany, MS 38652-3319
NMPHC Holly Springs | 1705 Crescent Meadows Dr Holly Springs, MS 38635
NMPHC Multi-Specialty Telehealth Center | 15931 Boundary Dr Ashland, MS 38603-7740
NMPHC Pharmacy | 80 Church Ave Ashland, MS 38603
NMPHC Wellness Center | 16025 Boundary Dr Ashland, MS 38603-7738
Oxford Health Care Associates | 2716 West Oxford Loop STE 171 Oxford, MS 38655-5722
Ripley Health Care Associates | 749 S Line St Ripley, MS 38663-2811
Tishomingo Health Care Associates | 1310 Main St Tishomingo, MS 38873-8410
Walnut Dental Center | 521 Main St Walnut, MS 38683-9349
Walnut Imaging Center | 71 Mitchel Ave Walnut, MS 38683
Walnut Medical Center | 531 Main St Walnut, MS 38683-9349

● **NORTHEAST MISSISSIPPI HEALTH CARE, INC.**

Byhalia Family Dental Clinic | 34 Brunswick St Byhalia, MS 38611-7000
Dba Byhalia Family Health Center | 12 Brunswick St Byhalia, MS 38611-7000
DeSoto Community Health Center | 7535 Airways Blvd Southaven, MS 38671-5834
Mt. Pleasant Family Hlth Clinic | 154 Old Mt Pleasant Rd Holly Springs, MS 38635-9510
NEMHC Mobile Unit 1 | 3442 Highway 309 N Byhalia, MS 38611-8835
NEMHC Mobile Unit 2 | 3442 Highway 309 N Byhalia, MS 38611-8835