



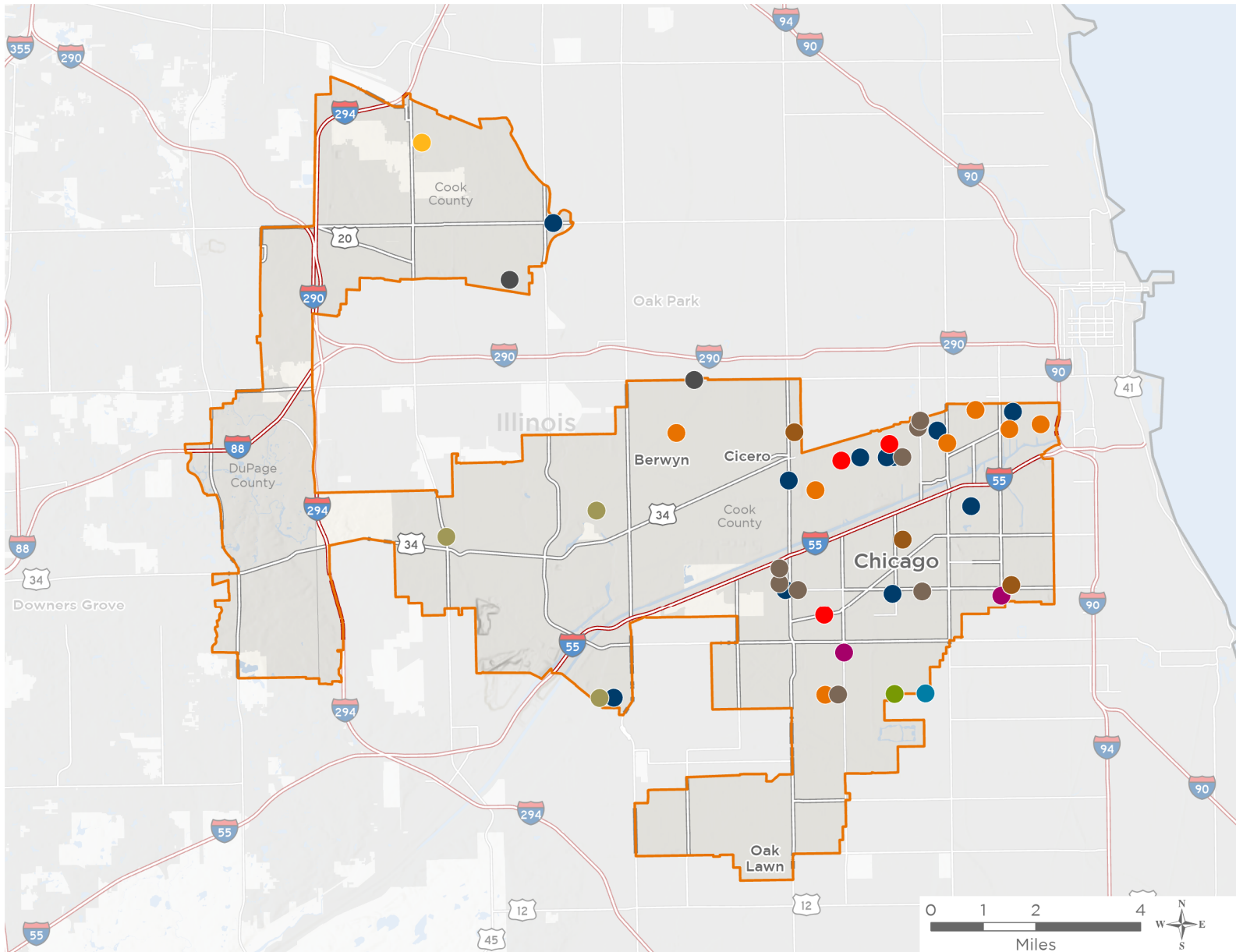
NATIONAL ASSOCIATION OF
Community Health Centers®

Representative Chuy García

119th United States Congress

Illinois' **4TH** Congressional District

The 11 federally-funded health center organizations with a presence in Illinois' 4th Congressional District leverage **\$66,648,349** in federal investments to serve **545,025** patients.



49

**NUMBER OF DELIVERY SITES
IN CONGRESSIONAL DISTRICT**

- Federally-funded Delivery Site (each color represents one organization)
- Health Center Program Look-Alikes
- 119th Congressional District Boundaries
- County Boundaries
- Interstates
- Highways
- Major Roads
- Populated Places

Notes | Delivery sites represent locations of organizations funded by the federal Health Center Program. Health Center Program Look-Alikes are community-based health care providers that meet the requirements of the HRSA Health Center Program, but do not receive Health Center Program funding. Some locations may overlap due to scale or may otherwise not be visible when mapped. Federal investments represent the total funding from the federal Health Center Program to grantees with a presence in the state in 2023.

Sources | Federally-Funded Delivery Site Locations and Health Center Program Look-Alikes: data.HRSA.gov, November 2024. Health Center Patients and Federal Funding | 2024 Uniform Data System, Bureau of Primary Health Care, HRSA.



49

NUMBER OF DELIVERY SITES IN CONGRESSIONAL DISTRICT

(main organization in bold)

● ACCESS COMMUNITY HEALTH NETWORK

ACCESS Cabrini Family Health Center | 3450 S Archer Ave Chicago, IL 60608-6837
ACCESS Centro Medico | 3700 W 26th St Chicago, IL 60623-3824
ACCESS Centro Medico San Rafael | 3204 W 26th St Chicago, IL 60623-4031
ACCESS Des Plaines Valley Health Center | 7450 W 63rd St Summit Argo, IL 60501-1816
ACCESS Hawthorne Family Health Center | 3040 S Cicero Ave Cicero, IL 60804-3638
ACCESS Kedzie Family Health Center | 3229 W 47th Pl Chicago, IL 60632-3011
ACCESS Melrose Park Family Health Center | 8321 W North Ave Melrose Park, IL 60160-1669
ACCESS Pilsen Family Health Center | 1817 S Loomis St Chicago, IL 60608-3018
ACCESS Plaza Family Health Center | 2533 W Cermak Rd Chicago, IL 60608-3719
ACCESS Servicios Medicos La Villita | 3303 W 26th St Chicago, IL 60623-4036
ACCESS Southwest Family Health Center | 4839 W 47th St Chicago, IL 60638-2039

● ALIVIO MEDICAL CENTER, INC

Alivio's Walk In Wellness Center at Berwyn | 6447 Cermak Rd STE 100 Berwyn, IL 60402-2311
Alivio Medical Center | 2355 S Western Ave Chicago, IL 60608-3837
Alivio Medical Center | 966 W 21st St Chicago, IL 60608-4511
Alivio Medical Center at Berwyn | 6447 Cermak Rd Berwyn, IL 60402-2311
Alivio Medical Center Dental at 63rd St. | 4255 W 63rd St Chicago, IL 60629-5041
Alivio Medical Center Dental at 63rd St. | 4255 W 63rd St Chicago, IL 60629-5041
AMC Mobile Unit | 966 W 21st St Chicago, IL 60608-4511
Benito Juarez Community Academy | 1450 W Cermak Rd Chicago, IL 60608-4408
Jose Clemente Orozco Academy | 1940 W 18th St Chicago, IL 60608-1903
Little Village Lawndale Community High School Campus | 3120 S Kostner Ave Chicago, IL 60623-4842

● CHICAGO FAMILY HEALTH CENTER INC

Chicago Family Health Center- Chicago Lawn | 3223 W 63rd St Chicago, IL 60629-3333

● ESPERANZA HEALTH CENTERS

Esperanza Academy for Global Citizenship | 4647 W 47th St RM 200 Chicago, IL 60632-4847
Esperanza Academy for Global Citizenship Annex | 4941 W 46th St RM 100 Chicago, IL 60638-2023
Esperanza at 63rd | 4058 W 63rd St Chicago, IL 60629-4639
Esperanza at Charles G. Hammond Elementary School | 2819 W 21st Pl Chicago, IL 60623-3503
Esperanza at Cultivate Collective | 4350 S Laporte Ave Chicago, IL 60638
Esperanza Brighton Park | 4700 S California Ave Chicago, IL 60632-2016
Esperanza Brighton Park Campus Expansion | 4720 S California Ave Chicago, IL 60632-2016
Esperanza California | 2001 S California Ave, Ste 100 Chicago, IL 60608-2486
Esperanza California, Suite 101 | 2001 S California Ave STE 101 Chicago, IL 60608-2486
Esperanza Little Village | 3059 W 26th St Chicago, IL 60623-4131



49

NUMBER OF DELIVERY SITES IN CONGRESSIONAL DISTRICT

(main organization in bold)

FRIEND FAMILY HEALTH CENTER, INC.

FFHC-Ashland | 4802 S Ashland Ave Chicago, IL 60609-4233

FFHC-Pulaski | 5635 S Pulaski Rd Chicago, IL 60629-4438

GREATER FAMILY HEALTH

10225 Grand Avenue, Franklin Park, IL 60131 | 10225 Grand Ave Franklin Park, IL 60131-3138

INNER -CITY MUSLIM ACTION NETWORK

IMAN-Main Site | 2744 W 63rd St Chicago, IL 60629-2343

IMAN Mobile Health Unit | 2744 W 63rd St Chicago, IL 60629-2343

LAWDALE CHRISTIAN HEALTH CENTER

LCHC at Archer Avenue | 5122 S Archer Ave Chicago, IL 60632-4508

LCHC at Farragut Academy | 3256 W 24th St Chicago, IL 60623-3407

Temporary Site - New Life Little Village | 2634 S Pulaski Rd Chicago, IL 60623-4409

PCC COMMUNITY WELLNESS CENTER

PCC Melrose Park Family Health Center | 1111 Superior St, Ste 101 Melrose Park, IL 60160-4100

PCC South Family Health Center | 6201 Roosevelt Rd Berwyn, IL 60402-1108

PILLARS COMMUNITY HEALTH

Pillars Community Health BEDS Plus Summit | 7666 W 63rd St Summit Argo, IL 60501-1812

Pillars Community Health Burlington | 105 E Burlington St STE C Riverside, IL 60546-2382

Pillars Community Health La Grange Park | 321 N La Grange Rd La Grange Park, IL 60526-5622

UNIVERSITY OF ILLINOIS

UI Health Mile Square Health Center Back of the Yards Dental | 4634 S Bishop St Chicago, IL 60609-3240

University Of Illinois Medical Center - Mile Square Health Center At Back Of The Yards | 4630 S Bishop St Chicago, IL 60609-3240

University Of Illinois Medical Center, Mile Square Health Center, Cicero | 4747 W Cermak Rd Cicero, IL 60804-2508

UNIVERSITY OF ILLINOIS MEDICAL CENTER, MILE SQUARE HEALTH CENTER, Davis Health and Wellness Center | 3050 W 39th Pl Chicago, IL 60632-2402