



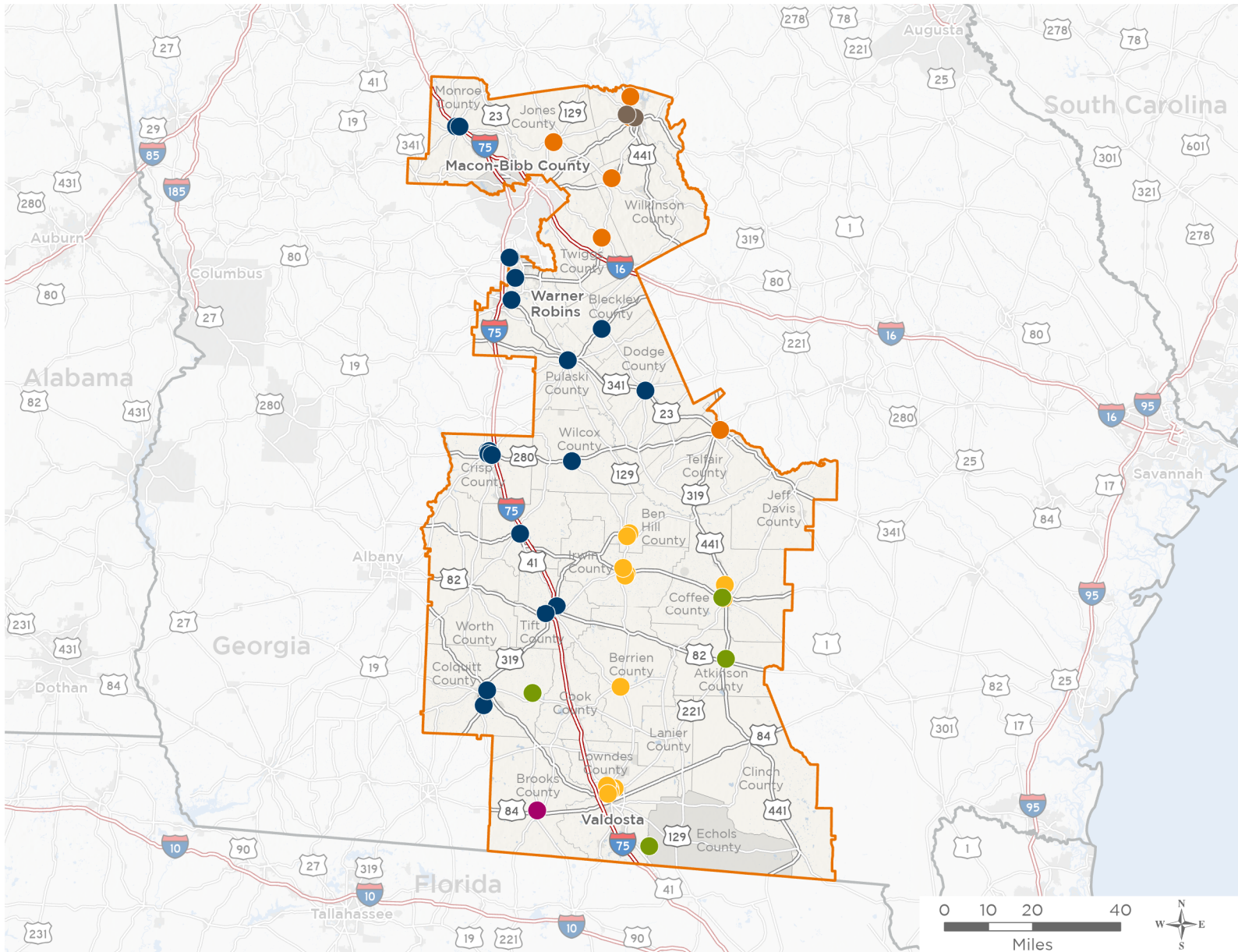
NATIONAL ASSOCIATION OF
Community Health Centers®

Representative Austin Scott

119th United States Congress

Georgia's **8TH** Congressional District

The 6 federally-funded health center organizations with a presence in Georgia's 8th Congressional District leverage **\$30,811,130** in federal investments to serve **209,963** patients.



56

**NUMBER OF DELIVERY SITES
IN CONGRESSIONAL DISTRICT**

- Federally-funded Delivery Site (each color represents one organization)
- Health Center Program Look-Alikes
- 119th Congressional District Boundaries
- County Boundaries
- Populated Places
- Interstates
- Highways
- Major Roads

Notes | Delivery sites represent locations of organizations funded by the federal Health Center Program. Health Center Program Look-Alikes are community-based health care providers that meet the requirements of the HRSA Health Center Program, but do not receive Health Center Program funding. Some locations may overlap due to scale or may otherwise not be visible when mapped. Federal investments represent the total funding from the federal Health Center Program to grantees with a presence in the state in 2023.

Sources | Federally-Funded Delivery Site Locations and Health Center Program Look-Alikes: data.HRSA.gov, November 2024. Health Center Patients and Federal Funding | 2024 Uniform Data System, Bureau of Primary Health Care, HRSA.



56

NUMBER OF DELIVERY SITES IN CONGRESSIONAL DISTRICT

(main organization in bold)

CARECONNECT HEALTH, INC.

- CareConnect Clinic | 110 E 13th Ave Cordele, GA 31015-4245
- CareConnect Convenient Care | 130 N Lee St Forsyth, GA 31029-2122
- CareConnect Convenient Care | 1909 US Highway 82 W STE 5 Tifton, GA 31793-8213
- CareConnect Convenient Care | 259 Broad St Hawkinsville, GA 31036-4818
- CareConnect Convenient Care | 277 Perry Pkwy STE C Perry, GA 31069-8428
- CareConnect Convenient Care | 6005 Watson Blvd STE 100 Byron, GA 31008-6542
- CareConnect Convenient Care and Pediatrics | 817 Griffin Ave Eastman, GA 31023-6718
- CareConnect Family Medicine | 602 E 16th Ave STE A&B Cordele, GA 31015-1776
- CareConnect Family Practice | 109 S 3rd St Cochran, GA 31014-6718
- CareConnect Family Practice | 6011 Watson Blvd STE 380 Byron, GA 31008-6657
- CareConnect Family Practice | 712 N 7th St Cordele, GA 31015-3271
- CareConnect Family Practice and Pediatrics | 317 E Washington Ave Ashburn, GA 31714-5248
- CareConnect Family Practice and Pediatrics | 636 2nd Ave Rochelle, GA 31079-2046
- CareConnect Mobile Van 1 | 414 S Frontage Rd Lot 53 Forsyth, GA 31029-3025
- CareConnect OBGYN | 412 E 4th Ave Cordele, GA 31015-3619
- CareConnect Pediatrics | 760 26th Ave SE Moultrie, GA 31768-6799
- CareConnect Urgent Care | 1805 Tift Ave N STE D Tifton, GA 31794-3579
- CareConnect Urgent Care | 358 Veterans Pkwy N Moultrie, GA 31788-4171
- CareConnect Urgent Care | 711 E 16th Ave Cordele, GA 31015-1513
- New Hope Clinic | 215 E 13th Ave Cordele, GA 31015-4249
- Pediatric Convenient Care | 1114 Ga Highway 96 STE d3-d5 Kathleen, GA 31047-2111
- Pediatric Convenient Care | 1909 Us Highway 82 W STE 4 Tifton, GA 31793-8213
- Pediatric Urgent Care | 1007 E 16th Ave STE A Cordele, GA 31015-4553

COMMUNITY HEALTH CARE SYSTEMS, INC.

- CHCS, Inc-Baldwin School | 100 N ABC St Milledgeville, GA 31061
- CHCS, INC - Mobile Unit | 4292 Gray Hwy Gray, GA 31032-5900
- Community Health Care Systems Inc-WILKINSON | 218 Milledgeville Hwy Gordon, GA 31031-3827
- Community Health Care Systems, Inc-Telfair | 280 E Willow Creek Ln Mc Rae, GA 31055-5128
- Community Health Care Systems, Inc.- Jones County | 4292 Gray Hwy Gray, GA 31032-5900
- Community Health Care Systems, Inc. - Twiggs County Public Schools Wellness Center | 675 Bullard Rd Jeffersonville, GA 31044-3314
- Community Health Care Systems, Inc. | 101 Watson Dr Jeffersonville, GA 31044-5508
- Community Health Care Systems, Inc. Baldwin County | 102 Airport Rd NE APT A Milledgeville, GA 31061-9313

DEPARTMENT OF COMMUNITY HEALTH GEORGIA

- Colquitt Co. BOH - Ellenton Farmworker Clinic Mobile Clinic | 185 N Baker St Norman Park, GA 31771-5268
- Colquitt County Board of Health, Ellenton Clinic | 185 N Baker St Norman Park, GA 31771-5268



56

**NUMBER OF DELIVERY SITES IN
CONGRESSIONAL DISTRICT**

(main organization in bold)

Migrant Farmworkers Clinic, Inc | 2186 J Frank Culpepper Rd Lake Park, GA 31636-5624
South Central Primary Care Center - Douglas | 1309 Ocilla Rd STE A Douglas, GA 31533-2209
South Central Primary Care Center - Pearson | 640 Main St N Pearson, GA 31642-7549

OCONEE VALLEY HEALTHCARE, INC.

Oconee Valley Healthcare, Inc. Milledgeville | 510 N Cobb St Milledgeville, GA 31061-2635
Oconee Valley Healthcare, Inc. River Edge | 60 GA Highway 22 W Milledgeville, GA 31061-6606

PRIMARY CARE OF SOUTHWEST GEORGIA, INC.

Primary Care of Southwest Georgia - Quitman | 907 N Court St Quitman, GA 31643-1315

SOUTH CENTRAL PRIMARY CARE CENTER, INC.

Ben Hill County School Health Center | 134 Jc Hunter Rd Fitzgerald, GA 31750-6901
Betty Dupree Health Care Center | 201 N Bartow St Nashville, GA 31639-1435
Coffee County High School | 159 Trojan Way Douglas, GA 31533-8263
Douglas Family Health | 1309 Ocilla Rd Douglas, GA 31533-2209
Irwin County School Health Center | 521 LAX Hwy Ocilla, GA 31774-2225
Kid's Health - Fitzgerald | 299 Benjamin Hill Dr Fitzgerald, GA 31750-7575
Kid's Health - IC Schools | 149 Chieftain Cir Ocilla, GA 31774-2231
Kid's Health - Valdosta | 2707 N Barack Obama Blvd Valdosta, GA 31602-2057
Kid's Health | 303 Shirley Ave STE B Douglas, GA 31533-2373
Northside Family Health Center | 247 Northside Dr STE B Valdosta, GA 31602-1892
Psychiatric and Counseling Services | 303 Shirley Ave STE A Douglas, GA 31533-2367
South Central Family Health Care | 607 N Irwin Ave Ocilla, GA 31774-5009
South Central Family Medicine | 640 Main St N Pearson, GA 31642-7549
South Central Family Medicine Mobile Unit | 640 Main St N Pearson, GA 31642-7549
South Central Primary Care - Ashley Street | 2301 N Ashley St Valdosta, GA 31602-2620
South Central Women's Health | 3308 Greystone Way Valdosta, GA 31605-1096
Valdosta Children's Healthcare | 105 W Cranford Ave Valdosta, GA 31602-2930