



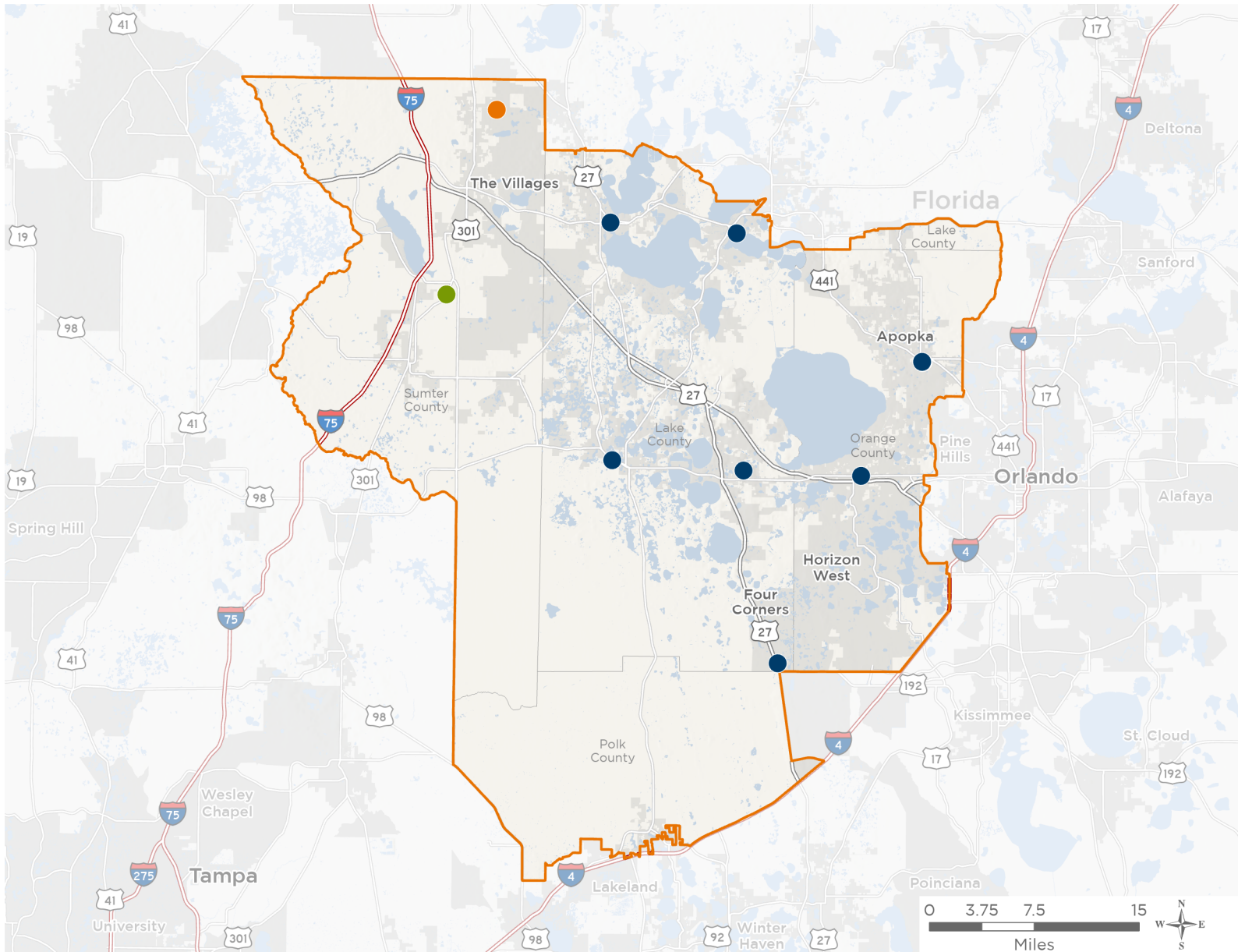
NATIONAL ASSOCIATION OF
Community Health Centers®

Representative Daniel Webster

119th United States Congress

Florida's **11TH** Congressional District

The 3 federally-funded health center organizations with a presence in Florida's 11th Congressional District leverage **\$17,719,139** in federal investments to serve **121,673** patients.



- Federally-funded Delivery Site (each color represents one organization)
- Federally-funded Delivery Site (each color represents one organization)
- Federally-funded Delivery Site (each color represents one organization)
- ▲ Health Center Program Look-Alikes
- ▭ 119th Congressional District Boundaries
- ▭ County Boundaries
- ▭ Populated Places
- ▬ Interstates
- ▬ Highways
- ▬ Major Roads

14

**NUMBER OF DELIVERY SITES
IN CONGRESSIONAL DISTRICT**

Notes | Delivery sites represent locations of organizations funded by the federal Health Center Program. Health Center Program Look-Alikes are community-based health care providers that meet the requirements of the HRSA Health Center Program, but do not receive Health Center Program funding. Some locations may overlap due to scale or may otherwise not be visible when mapped. Federal investments represent the total funding from the federal Health Center Program to grantees with a presence in the state in 2023.

Sources | Federally-Funded Delivery Site Locations and Health Center Program Look-Alikes: data.HRSA.gov, November 2024. Health Center Patients and Federal Funding | 2024 Uniform Data System, Bureau of Primary Health Care, HRSA.



NATIONAL ASSOCIATION OF
Community Health Centers®

Representative Daniel Webster
119th United States Congress

Florida's **11TH** Congressional District

14

NUMBER OF DELIVERY SITES IN CONGRESSIONAL DISTRICT

(main organization in bold)

● **COMMUNITY HEALTH CENTERS INC**

Community Health Center - Apopka Dental Care | 210 E 7th St Apopka, FL 32703-5328

Community Health Center - Apopka Family & Ob Care | 225 E 7th St Apopka, FL 32703-5327

Community Health Center - Apopka Pediatric Care | 618 S Forest Ave Apopka, FL 32703-5338

Community Health Center - Groveland Family, Pediatric & Dental Care | 1296 W Broad St Groveland, FL 34736-2012

COMMUNITY HEALTH CENTER - LEESBURG Family Medical and Dental | 225 N 1st St Leesburg, FL 34748-5150

Community Health Centers-Tavares Family Medical and Dental | 212 E Main St Tavares, FL 32778-3808

Community Health Centers-Winter Garden Family and Dental Care | 13275 W Colonial Dr Winter Garden, FL 34787-3984

Community Health Centers Clermont | 2140 N Don Wickham Dr STE C Clermont, FL 34711-1922

Four Corners Health Center | 509 Cagan View Rd Clermont, FL 34714-6405

● **HEART OF FLORIDA HEALTH CENTER**

Heart of Florida Health Center The Villages | 3365 Wedgewood Ln The Villages, FL 32162-7181

● **PROJECT HEALTH, INC.**

Dental Van. | 1389 S US 301 Sumterville, FL 33585-5143

Independent Diagnostic Testing Facility (IDTF) | 1389 S US 301 Ste B Sumterville, FL 33585-5143

Langley Health Services Sumterville | 1389 S US 301 Sumterville, FL 33585-5143

Mobile Medical Unit. | 1389 S US 301 Sumterville, FL 33585-5143