



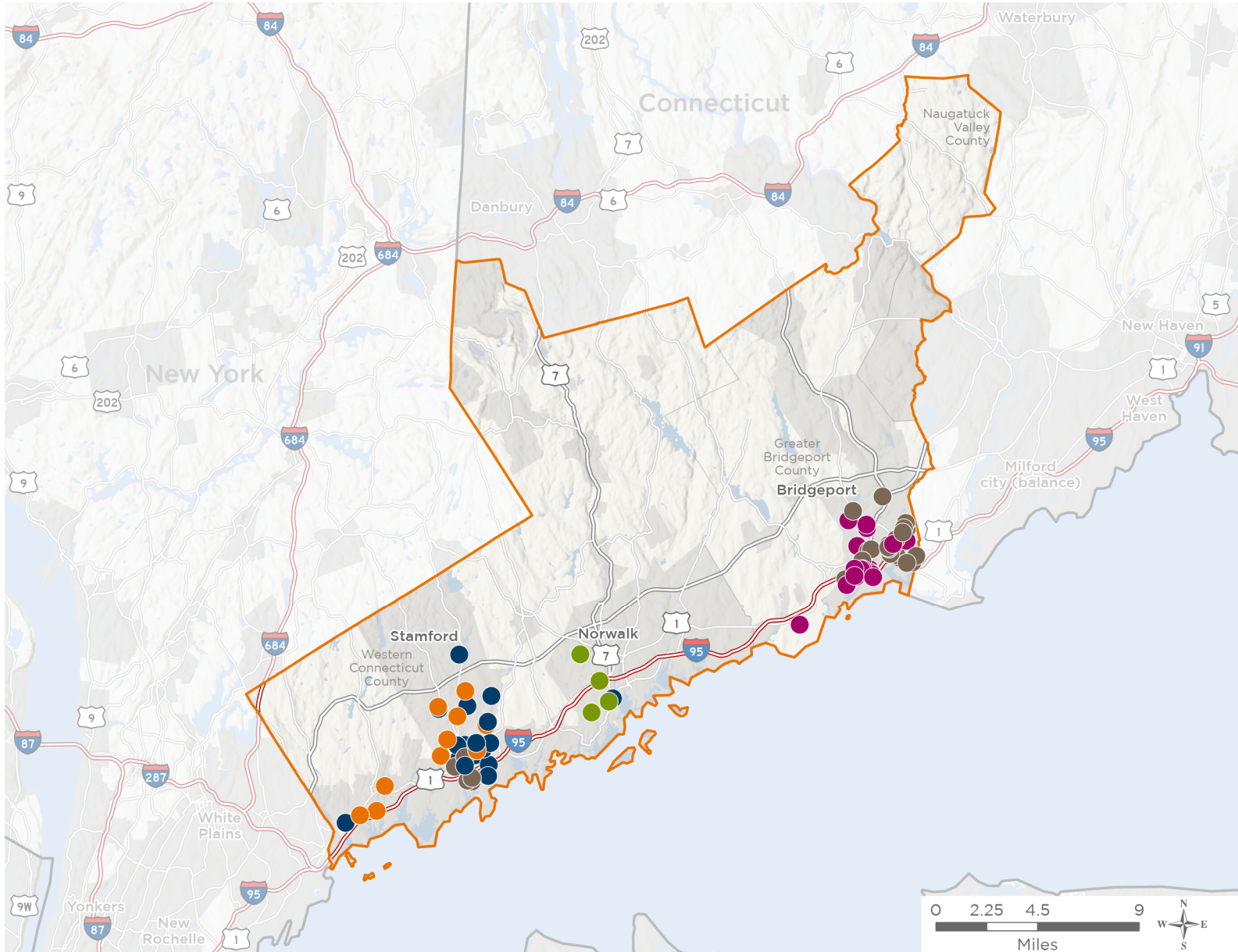
NATIONAL ASSOCIATION OF
Community Health Centers®

Representative Jim Himes

119th United States Congress

Connecticut's **4TH** Congressional District

The 5 federally-funded health center organizations with a presence in Connecticut's 4th Congressional District leverage **\$19,703,154** in federal investments to serve **194,696** patients.



88

**NUMBER OF DELIVERY SITES
IN CONGRESSIONAL DISTRICT**

- ● ● ● ● Federally-funded Delivery Site (each color represents one organization)
- ▲ Health Center Program Look-Alikes
- ▭ 119th Congressional District Boundaries
- ▭ County Boundaries
- ▭ Populated Places
- ▬ Interstates
- ▬ Highways
- ▬ Major Roads

Notes | Delivery sites represent locations of organizations funded by the federal Health Center Program. Health Center Program Look-Alikes are community-based health care providers that meet the requirements of the HRSA Health Center Program, but do not receive Health Center Program funding. Some locations may overlap due to scale or may otherwise not be visible when mapped. Federal investments represent the total funding from the federal Health Center Program to grantees with a presence in the state in 2023.

Sources | Federally-Funded Delivery Site Locations and Health Center Program Look-Alikes: data.HRSA.gov, November 2024. Health Center Patients and Federal Funding | 2024 Uniform Data System, Bureau of Primary Health Care, HRSA.



88

NUMBER OF DELIVERY SITES IN CONGRESSIONAL DISTRICT

(main organization in bold)

● **COMMUNITY HEALTH CENTER, INCORPORATED**

Anchor Alternative High School SBHC | 299 North St Stamford, CT 06901-1112
CGC Lathon Wider | 137 Henry St Stamford, CT 06902-5835
CGC Maple Avenue CGC-SBHC | 90 Maple Ave Stamford, CT 06902-4040
CGC Palmers Hill CGC | 64 Palmers Hill Rd Stamford, CT 06902-2113
CGC William Pitt | 195 Hillandale Ave Stamford, CT 06902-2823
CHC of Stamford @ Fifth Street | 22 5th St Stamford, CT 06905-5012
Child Guidance Center of Southern Connecticut | 103 W Broad St BLDG 103 Stamford, CT 06902-3713
Child Guidance Center of Southern Connecticut | 401 Shippan Ave Stamford, CT 06902-6075
Child Guidance Center of Southern Connecticut | 81 Holly Hill Ln FL 2 Greenwich, CT 06830-2944
Day Street Community Health Center | 49 Day St Norwalk, CT 06854-4901
Franklin Street Community Health Center | 141 Franklin St Stamford, CT 06901-1014
Hart Magnet School SBHC | 61 Adams Ave Stamford, CT 06902-3702
J.M. Wright Technical High School SBHC | 120 Bridge St Stamford, CT 06905-4401
Julia A. Stark Elementary School SBHC | 398 Glenbrook Rd Stamford, CT 06906-2122
Newfield School SBHC | 345 Pepper Ridge Rd Stamford, CT 06905-2801
Northeast Elementary School SBHC | 82 Scofieldtown Rd Stamford, CT 06903-4020
Roxbury Elementary School SBHC | 751 W Hill Rd Stamford, CT 06902-1413
Springdale Elementary School SBHC | 1127 Hope St Stamford, CT 06907-1825
Strawberry Hill SBHC | 200 Strawberry Hill Ave Stamford, CT 06902-2519
Toquam Magnet School | 123 Ridgewood Ave Stamford, CT 06907-2620
W.Y.A. Liberations | 119 Main St Stamford, CT 06901-2818

● **FAMILY CENTERS INC**

Cloonan Middle School | 11 W North St Stamford, CT 06902-2217
Dolan Middle School | 51 Toms Rd Stamford, CT 06906-1022
Family Centers Health Care at 60 Palmers Hill | 60 Palmers Hill Rd Stamford, CT 06902-2113
Family Centers Health Care at Wilbur Peck Court | 111 Wilbur Peck Ct Greenwich, CT 06830-6323
FCHC at 20 Bridge Street | 20 Bridge St Greenwich, CT 06830-5238
FCHC SBHC at Greenwich High School | 10 Hillside Rd RM 632 Greenwich, CT 06830-4835
Rippowam MS/AITE HS | 381 High Ridge Rd Stamford, CT 06905-3018
Stamford High School | 55 Strawberry Hill Ave Stamford, CT 06902-2608
Stillmeadow Elementary SBHC | 800 Stillwater Rd Stamford, CT 06902-1800
Turn of River MS SBHC | 117 Vine Rd Stamford, CT 06905-2016
Westhill High School | 125 Roxbury Rd Stamford, CT 06902-1215



88

NUMBER OF DELIVERY SITES IN CONGRESSIONAL DISTRICT

(main organization in bold)

NORWALK COMMUNITY HEALTH CENTER, INC.

120 Connecticut Avenue, Norwalk, CT 06854 | 120 Connecticut Ave Norwalk, CT 06854-1525
Brien McMahon High School SBHC | 300 Highland Ave Norwalk, CT 06854-4029
Mobile Van #1 | 120 Connecticut Ave Norwalk, CT 06854-1525
Norwalk Community Health Center @ Smilow Life Center | 55 Chestnut St Norwalk, CT 06854-3622
Ponus Ridge Middle School SBHC | 21 Hunters Ln Norwalk, CT 06850

OPTIMUS HEALTH CARE

Barnum/Waltersville Elementary School - SBHC | 495 Waterview Ave Bridgeport, CT 06608-2554
Bullard-Havens Technical High School - SBHC | 500 Palisade Ave Bridgeport, CT 06610-3458
Columbus Elementary School - SBHC | 275 George St Bridgeport, CT 06604-3320
Fairchild Wheeler Interdistrict Magnet Campus - SBHC | 840 Old Town Rd Bridgeport, CT 06606-1448
Jettie S. Tisdale Elementary School - SBHC | 250 Hollister Ave Bridgeport, CT 06607-1924
JFK Elementary School - SBHC | 700 Palisade Ave Bridgeport, CT 06610-3457
Luis Munoz Marin Elementary School - SBHC | 479 Helen St Bridgeport, CT 06608-1321
OPTIMUS at Freeman Street | 30 Freeman St Bridgeport, CT 06607-1548
OPTIMUS at Hall Neighborhood House | 52 George E Pipkins Way Bridgeport, CT 06608-2425
OPTIMUS at Inspirica | 8 Woodland Pl Stamford, CT 06902-6939
OPTIMUS at Kinsella | 1862 Commerce Dr Bridgeport, CT 06605-2230
Optimus Fairgate | 138 Stillwater Ave Stamford, CT 06902-4843
OPTIMUS Harbor Point | 805 Atlantic St Stamford, CT 06902-6805
OPTIMUS Hollow Community Health Center | 82 George St Bridgeport, CT 06604-3315
OPTIMUS JP Morgan Chase Wellness Center | 1071 E Main St Bridgeport, CT 06608-1618
OPTIMUS Main Street Pediatrics | 3715 Main St Bridgeport, CT 06606-3618
OPTIMUS on Barnum Avenue | 471 Barnum Ave Bridgeport, CT 06608-2409
OPTIMUS on East Main | 982 E Main St Bridgeport, CT 06608-1913
OPTIMUS on the Boulevard | 1351 Washington Blvd Stamford, CT 06902-2419
OPTIMUS Pacific House Shelter | 597 Pacific St Stamford, CT 06902-5814
OPTIMUS Park City Primary Care | 64 Black Rock Ave Bridgeport, CT 06605-1200
OPTIMUS Ralphola Taylor Community Health Center | 790 Central Ave Bridgeport, CT 06607-1705
OPTIMUS Smile for Miles Mobile Dental Center | 975 E Main St Bridgeport, CT 06608-1914
OPTIMUS Transitional Clinic | 480 Bond St Bridgeport, CT 06610-2205
Optimus Wellness Clinic | 975 E Main St Bridgeport, CT 06608-1914
OPTMUS at Recovery Counseling Services | 1438 Park Ave Bridgeport, CT 06604-2512
Warren Harding High School - SBHC | 379 Bond St Bridgeport, CT 06610-2201

SOUTHWEST COMMUNITY HEALTH CENTER INC

Bassick High School, School Based Health Clinic | 1181 Fairfield Ave Bridgeport, CT 06605-1183
CASA | 690 Arctic St Bridgeport, CT 06608-2008



NATIONAL ASSOCIATION OF
Community Health Centers®

Representative Jim Himes
119th United States Congress

Connecticut's **4TH** Congressional District

88

NUMBER OF DELIVERY SITES IN CONGRESSIONAL DISTRICT

(main organization in bold)

Casa Recovery | 1124 Iranistan Ave Bridgeport, CT 06605-1121
Central High School, School Based Health Center | 1 Lincoln Blvd Bridgeport, CT 06606-5502
Cesar Batalla, School Based Health Center | 606 Howard Ave Bridgeport, CT 06605-2016
Family Health Center | 762 Lindley St Bridgeport, CT 06606-5046
Florance Blackham School, School Based Health Centr | 425 Thorne St Bridgeport, CT 06606-3418
Hall Neighborhood House | 52 George E Pipkins Way Bridgeport, CT 06608-2425
Harrison Apartments | 651 State St Bridgeport, CT 06604-4507
James J. Curiale School | 300 Laurel Ave Bridgeport, CT 06605-1103
Liberation Programs | 399 Mill Hill Ave Bridgeport, CT 06610-2865
Mobile Medical Unit #1 | 46 Albion St Bridgeport, CT 06605-2602
Operation Hope | 50 Nichols St Fairfield, CT 06824-5816
Pivot Ministries | 495 Jane St Bridgeport, CT 06608-1707
Prospect House | 392 Prospect St Bridgeport, CT 06604-4625
Read School, School Based Health Center | 130 Ezra St Bridgeport, CT 06606-5061
Roosevelt School School Based Health Center | 680 Park Ave Bridgeport, CT 06604-4610
Southwest Community Health Center, Inc - UC | 1020 Fairfield Ave Bridgeport, CT 06605-1187
Southwest Community Hlth Ctr, Inc | 46 Albion St Bridgeport, CT 06605-2602
Southwest Community Hlth Ctr, Inc | 968 Fairfield Ave Bridgeport, CT 06605-1116
Southwest Community Hlth Ctr, Inc | 1046 Fairfield Ave Bridgeport, CT 06605-1116
Southwest Community Hlth Ctr, Inc | 510 Clinton Ave Bridgeport, CT 06605-1701
Thomas Merton Family Center | 1406 State St Bridgeport, CT 06605-2005
Windward Apartments | 509 Park Ave Bridgeport, CT 06604-5859