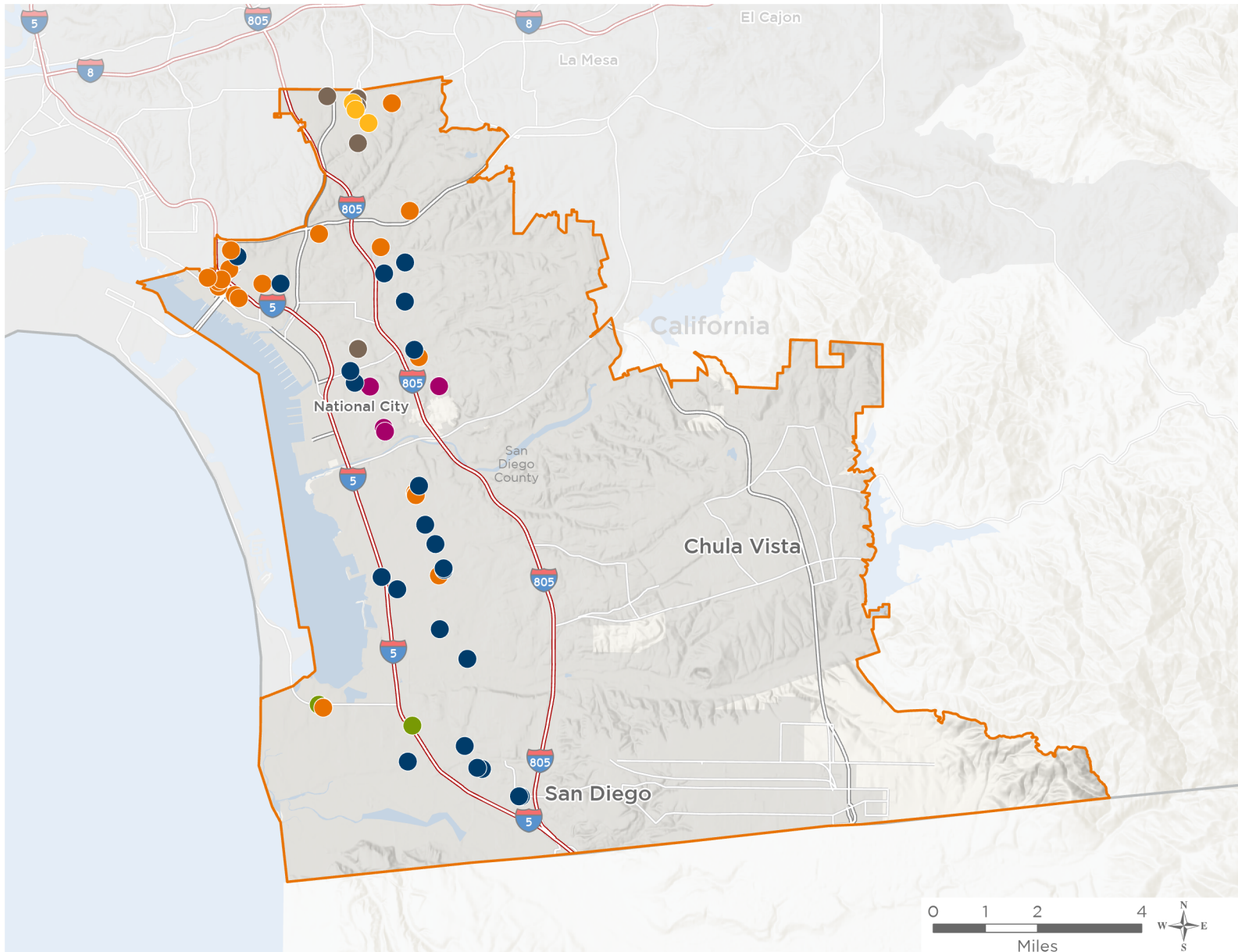




The 6 federally-funded health center organizations with a presence in California's 52nd Congressional District leverage **\$40,806,289** in federal investments to serve **377,169** patients.



**89**

**NUMBER OF DELIVERY SITES  
IN CONGRESSIONAL DISTRICT**

- Federally-funded Delivery Site (each color represents one organization)
- Health Center Program Look-Alikes
- 119th Congressional District Boundaries
- County Boundaries
- Interstates
- Highways
- Populated Places
- Major Roads

Notes | Delivery sites represent locations of organizations funded by the federal Health Center Program. Health Center Program Look-Alikes are community-based health care providers that meet the requirements of the HRSA Health Center Program, but do not receive Health Center Program funding. Some locations may overlap due to scale or may otherwise not be visible when mapped. Federal investments represent the total funding from the federal Health Center Program to grantees with a presence in the state in 2023.

Sources | Federally-Funded Delivery Site Locations and Health Center Program Look-Alikes: data.HRSA.gov, November 2024. Health Center Patients and Federal Funding | 2024 Uniform Data System, Bureau of Primary Health Care, HRSA.



NATIONAL ASSOCIATION OF  
Community Health Centers®

**Representative Juan Vargas**  
119th United States Congress

California's **52<sup>ND</sup>** Congressional District

**89**

## NUMBER OF DELIVERY SITES IN CONGRESSIONAL DISTRICT

(main organization in bold)

### ● **CENTRO DE SALUD DE LA COMUNIDAD DE SAN YSIDRO, INC.**

Lincoln High School | 4777 Imperial Ave San Diego, CA 92113-2071  
Palomar High School | 480 Palomar St Chula Vista, CA 91911-3008  
San Ysidro Adult Day Healthcare Center | 3364 Beyer Blvd San Diego, CA 92173-1322  
San Ysidro Health Care View Health Center | 292 Euclid Ave STE 210 San Diego, CA 92114-3629  
San Ysidro Health CASA | 3045 Beyer Blvd STE D-101 San Diego, CA 92154-3407  
San Ysidro Health CHC - Ocean View | 3177 Ocean View Blvd San Diego, CA 92113-1432  
San Ysidro Health Chula Vista | 678 3rd Ave Chula Vista, CA 91910-5736  
San Ysidro Health Euclid | 286 Euclid Ave STE 302 San Diego, CA 92114-3613  
San Ysidro Health HIV & LGBTQ Mobile Clinic Services | 4004 Beyer Blvd San Ysidro, CA 92173-2007  
San Ysidro Health King-Chavez Health Center | 950 S Euclid Ave San Diego, CA 92114-6201  
San Ysidro Health Maternal & Child Health Center | 4050 Beyer Blvd San Ysidro, CA 92173-2007  
San Ysidro Health Mobile Health Services 1F | 4004 Beyer Blvd San Ysidro, CA 92173-2007  
San Ysidro Health Mobile Health Services 1G | 4004 Beyer Blvd San Ysidro, CA 92173-2007  
San Ysidro Health Mobile Health Services 1H | 4004 Beyer Blvd San Ysidro, CA 92173-2007  
San Ysidro Health Mobile Health Services 1J | 4004 Beyer Blvd San Ysidro, CA 92173-2007  
San Ysidro Health National City | 1136 D Ave National City, CA 91950-3412  
San Ysidro Health Otay | 1637 Third Ave STE BF Chula Vista, CA 91911-5823  
San Ysidro Health Our Place | 286 Euclid Ave STE 309 San Diego, CA 92114-3613  
San Ysidro Health Paradise Hills | 2400 E 8th St STE A National City, CA 91950-2956  
San Ysidro Health Precision Park | 1666 Precision Park Ln San Diego, CA 92173-1346  
San Ysidro Health San Diego PACE/Senior Health Services | 3364 Beyer Blvd STE 102 San Ysidro, CA 92173-1322  
San Ysidro Health San Diego PACE/Senior Health Services Chula Vista | 880 3rd Ave Chula Vista, CA 91911-1305  
San Ysidro Health San Ysidro Health Center | 4004 Beyer Blvd San Ysidro, CA 92173-2007  
San Ysidro Health Sherman Heights | 316 25th St San Diego, CA 92102-3016  
San Ysidro Health South Bay | 330 E 8th St # 340 National City, CA 91950-2312  
San Ysidro Health South Bay Latino Research Center | 780 Bay Blvd STE 200 Chula Vista, CA 91910-5260  
San Ysidro Health South Bay Pediatrics | 280 E St Chula Vista, CA 91910-2945  
San Ysidro Health Sports Medicine | 670 L St, Ste G Chula Vista, CA 91911-1065  
San Ysidro Health Urgent Care | 333 H St STE 2080 Chula Vista, CA 91910-5558  
San Ysidro Health Wellness Clinic | 855 Third Ave STE 2200 Chula Vista, CA 91911-1353  
Southwest High School | 1685 Hollister St San Diego, CA 92154-4548

### ● **FAMILY HEALTH CENTERS OF SAN DIEGO INC**

Chula Vista Family Counseling Center | 248 Landis Ave Chula Vista, CA 91910-2609  
Chula Vista Family Health Center | 251 Landis Ave Chula Vista, CA 91910-2628



89

### NUMBER OF DELIVERY SITES IN CONGRESSIONAL DISTRICT

(main organization in bold)

Diamond Neighborhoods Family Health Center | 4725 Market St San Diego, CA 92102-4715  
FamilyHealth--Sweetwater Family Counseling Center | 333 H St, Ste 2010 Chula Vista, CA 91910-5556  
FamilyHealth - Youth Counseling Center | 2130 National Ave San Diego, CA 92113-2209  
FamilyHealth on Commercial | 2325 Commercial St STE 1400 San Diego, CA 92113-1195  
FHCS D Mobile Medical Unit II | 823 Gateway Center Way San Diego, CA 92102-4541  
FHCS D Mobile Medical Unit III | 823 Gateway Center Way San Diego, CA 92102-4541  
Ibarra Family Health Center | 4874 Polk Ave San Diego, CA 92105-2026  
KidCare Express Mobile Medical Unit | 823 Gateway Center Way San Diego, CA 92102-4541  
Landis Avenue Dental Services | 264 Landis Ave STE 200 Chula Vista, CA 91910-2651  
Landis Avenue Family Counseling Center | 264 Landis Ave STE 100 Chula Vista, CA 91910-2627  
Laura's Place | 1861 Newton Ave San Diego, CA 92113-2117  
Logan Heights Family Counseling Center | 2204 National Ave San Diego, CA 92113-3615  
Logan Heights Family Health Center | 1809 National Ave San Diego, CA 92113-2113  
Logan Heights Patient Care Support Services | 1827 Logan Ave STE 2 San Diego, CA 92113-2137  
Logan Memorial Family Health Center | 2875 Ocean View Blvd STE E128 San Diego, CA 92113-1334  
Mobile Counseling Center I | 823 Gateway Center Way San Diego, CA 92102-4541  
Mobile Counseling Center II | 823 Gateway Center Way San Diego, CA 92102-4541  
Monarch School | 1625 Newton Ave San Diego, CA 92113-1012  
National City Family Health Center | 1000 Euclid Ave National City, CA 91950-3856  
Oak Park Family Health Center | 5160 Federal Blvd San Diego, CA 92105-5429  
Rice Family Health Center | 352 L St Chula Vista, CA 91911-1208  
Sherman Heights Family Health Center | 2391 Island Ave San Diego, CA 92102-2941  
South Bay Behavioral Health Center | 740 10th St Imperial Beach, CA 91932-2216  
South Bay Family Counseling Center | 742 10th St Imperial Beach, CA 91932-2216

#### IMPERIAL BEACH COMMUNITY CLINIC

Imperial Beach Health Center | 949 Palm Ave Imperial Beach, CA 91932-1503  
Nestor Community Health Center | 1016 Outer Rd San Diego, CA 92154-1351

#### LA MAESTRA FAMILY CLINIC, INC.

La Maestra Behavioral Health Services | 4167 Fairmount Ave San Diego, CA 92105-1642  
La Maestra Central Elementary School Clinic | 3878 Orange Ave BLDG 100 San Diego, CA 92105-1038  
La Maestra City Heights Clinic | 4074 Fairmount Ave San Diego, CA 92105-1608  
La Maestra Dental Clinic | 4305 University Ave, Ste 120 San Diego, CA 92105-1645  
La Maestra Dental Clinic | 4305 University Ave, Ste 150 San Diego, CA 92105-1690  
La Maestra Family Clinic | 4060 Fairmount Ave San Diego, CA 92105-1608  
La Maestra Family Clinic Inc. | 4159 Fairmount Ave San Diego, CA 92105-1609  
La Maestra Family Clinic Inc. | 4177 Fairmount Ave San Diego, CA 92105-1609  
La Maestra Family Clinic Inc. | 4179 Fairmount Ave San Diego, CA 92105-1609



**89**

## **NUMBER OF DELIVERY SITES IN CONGRESSIONAL DISTRICT**

(main organization in bold)

La Maestra Family Clinic Inc. | 4187 Fairmount Ave San Diego, CA 92105-1609  
La Maestra Family Clinic Inc. | 4189 Fairmount Ave San Diego, CA 92105-1609  
La Maestra Family Clinic Inc. CCBHC | 4157 Fairmount Ave San Diego, CA 92105-1609  
La Maestra Family Clinic Inc. Wellness Supportive Services | 4175 Fairmount Ave San Diego, CA 92105-1609  
La Maestra Family Clinic, Inc | 4185 Fairmount Ave San Diego, CA 92105-1609  
La Maestra Family Clinic, Inc. | 4159 1/2 Fairmount Ave San Diego, CA 92105-1609  
La Maestra Hope Clinic | 4171 Fairmount Ave San Diego, CA 92105-1609  
La Maestra Mobile Dental Unit | 4060 Fairmount Ave San Diego, CA 92105-1608  
La Maestra Mobile Medical and Dental Van | 4060 Fairmount Ave San Diego, CA 92105-1608  
La Maestra Monroe Clark Middle School Clinic | 4388 Thorn St BLDG 300 San Diego, CA 92105-4238  
La Maestra National City Clinic | 217 Highland Ave National City, CA 91950-1518  
La Maestra National City Pharmacy | 209 Highland Ave National City, CA 91950-1518

### **OPERATION SAMAHAN, INC**

OPSAM HEALTH : 2101 Granger Ave | 2101 Granger Ave STE 101A National City, CA 91950-6208  
OPSAM HEALTH: 2743 Highland | 2743 Highland Ave National City, CA 91950-7410  
OPSAM HEALTH: 2835 Highland | 2835 Highland Ave National City, CA 91950-7404  
OPSAM HEALTH: Mobile Clinic 1 | 1428 Highland Ave National City, CA 91950-4624  
OPSAM HEALTH: Mobile Clinic 2 | 1428 Highland Ave National City, CA 91950-4624

### **SAN DIEGO FAMILY CARE**

Central Elementary School | 3878 Orange Ave San Diego, CA 92105-1038  
Mid-City Community Clinic-Pediatrics | 4305 University Ave, Ste 150 San Diego, CA 92105-1690  
Mid-City Community Clinic | 4290 Polk Ave San Diego, CA 92105-1524  
Rosa Parks Elementary School | 4510 Landis St San Diego, CA 92105-2822