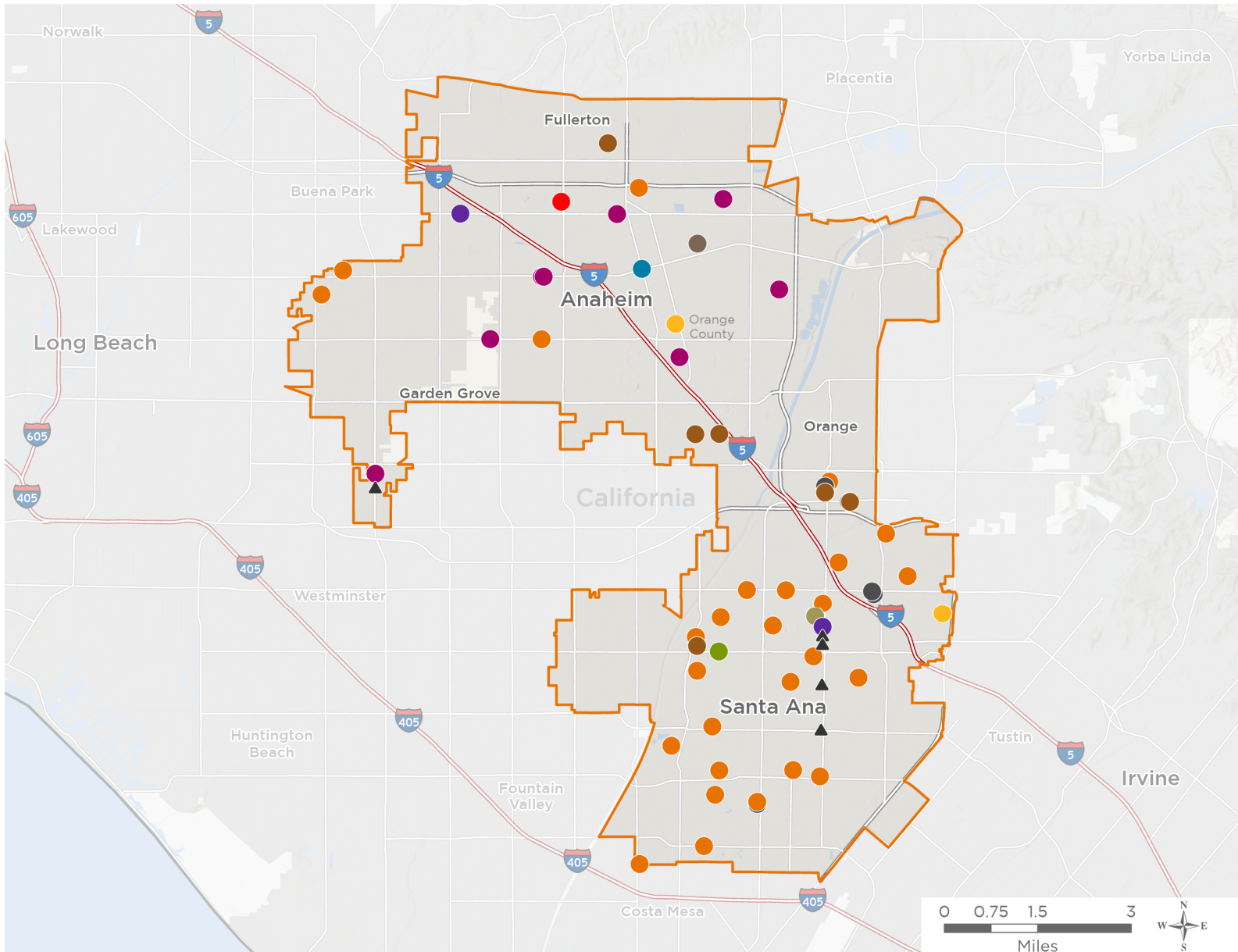




The 12 federally-funded health center organizations with a presence in California's 46th Congressional District leverage **\$38,907,384** in federal investments to serve **410,955** patients.



**81**

## NUMBER OF DELIVERY SITES IN CONGRESSIONAL DISTRICT

- ● ● Federally-funded Delivery Site (each color represents one organization)
- ▲ Health Center Program Look-Alikes
- 119th Congressional District Boundaries
- County Boundaries
- Populated Places
- Interstates
- Highways
- Major Roads

Notes | Delivery sites represent locations of organizations funded by the federal Health Center Program. Health Center Program Look-Alikes are community-based health care providers that meet the requirements of the HRSA Health Center Program, but do not receive Health Center Program funding. Some locations may overlap due to scale or may otherwise not be visible when mapped. Federal investments represent the total funding from the federal Health Center Program to grantees with a presence in the state in 2023.

Sources | Federally-Funded Delivery Site Locations and Health Center Program Look-Alikes: data.HRSA.gov, November 2024. Health Center Patients and Federal Funding | 2024 Uniform Data System, Bureau of Primary Health Care, HRSA.



81

### NUMBER OF DELIVERY SITES IN CONGRESSIONAL DISTRICT

(main organization in bold)

#### ● **AAA COMPREHENSIVE HEALTHCARE INC.**

AAA Santa Ana | 2740 S Bristol St, Ste 222 Santa Ana, CA 92704-6233

#### ● **ALTAMED HEALTH SERVICES CORPORATION**

AltaMed Behavioral Health at Circulos Advanced Learning Academy | 811 E Bishop St Santa Ana, CA 92701-6205

AltaMed Behavioral Health at Godinez Fundamental High School | 3002 W Centennial Rd Santa Ana, CA 92704-3904

AltaMed Behavioral Health at McFadden Institute of Technology | 2701 S Raitt St Santa Ana, CA 92704-5526

AltaMed Behavioral Health at Middle College High School | 1530 W 17th St Santa Ana, CA 92706-3398

AltaMed Behavioral Health at Segerstrom High School, Santa Ana | 2301 W Macarthur Blvd Santa Ana, CA 92704-7168

AltaMed Dental Group - Mobile Unit #1 | 1325 N Anaheim Blvd STE 200 Anaheim, CA 92801-1202

AltaMed Dental Group - Mobile Unit #2 | 1325 N Anaheim Blvd STE 200 Anaheim, CA 92801-1202

AltaMed Dental Group - Mobile Unit #3 | 3601 W Sunflower Ave, Ste 100 Santa Ana, CA 92704-7916

AltaMed Dental Group - Mobile Unit #4 | 3601 W Sunflower Ave, Ste 100 Santa Ana, CA 92704-7916

AltaMed Dental Group - Trailer #1 | 1800 W Ball Rd Anaheim, CA 92804-5516

AltaMed Dental Group at Abraham Lincoln Elementary School | 425 S Sullivan St Santa Ana, CA 92704-1631

AltaMed Dental Group at Adams Elementary School | 2130 S Raitt St Santa Ana, CA 92704-5001

AltaMed Dental Group at Advance Learning Academy | 408 E Santa Clara Ave Santa Ana, CA 92706-2957

AltaMed Dental Group at Centralia Elementary School | 195 N Western Ave Anaheim, CA 92801-6040

AltaMed Dental Group at Danbrook Elementary School | 320 S Danbrook Dr Anaheim, CA 92804-2715

AltaMed Dental Group at Diamond Elementary | 1450 S Center St Santa Ana, CA 92704-3660

AltaMed Dental Group at Edward B. Cole Academy | 333 W Walnut St Santa Ana, CA 92701-5662

AltaMed Dental Group at El Sol Science and Arts Academy of Santa Ana | 1010 N Broadway Santa Ana, CA 92701-3408

AltaMed Dental Group at Esqueda Elementary | 2240 S Main St Santa Ana, CA 92707-3264

AltaMed Dental Group at Fairhaven Elementary School | 1415 Fairhaven Ave Santa Ana, CA 92705-6822

AltaMed Dental Group at Fremont Elementary | 1930 W 10th St Santa Ana, CA 92703-2045

AltaMed Dental Group at Heroes Elementary School | 1111 W Civic Center Dr Santa Ana, CA 92703-2229

AltaMed Dental Group at John Muir Elementary | 1951 Mabury St Santa Ana, CA 92705-7147

AltaMed Dental Group at Lowell Elementary School | 700 S Flower St Santa Ana, CA 92703-4818

AltaMed Dental Group at Scholarship Prep - Orange County | 1010 W 17th St Santa Ana, CA 92706-3504

AltaMed Dental Group at Vista Heritage Global Academy | 2609 W 5th St Santa Ana, CA 92703-1818

AltaMed Dental Group at Washington Elementary School | 910 W Anahurst Pl Santa Ana, CA 92707-2501

AltaMed Dental Group at West Orange Elementary School | 243 S Bush St Orange, CA 92868-3802

AltaMed Medical and Dental Group - Anaheim | 1325 N Anaheim Blvd STE 200 Anaheim, CA 92801-1202

AltaMed Medical and Dental Group: Santa Ana, Main | 1400 N Main St Santa Ana, CA 92701-2321



81

## NUMBER OF DELIVERY SITES IN CONGRESSIONAL DISTRICT

(main organization in bold)

AltaMed Medical Group: Santa Ana Bristol Clinic | 2720 S Bristol St STE 110 Santa Ana, CA 92704-6210

AltaMed PACE - Anaheim | 1325 N Anaheim Blvd Anaheim, CA 92801-1202

AltaMed PACE - Santa Ana | 3601 W Sunflower Ave, Ste 100 Santa Ana, CA 92704-7916

AltaMed Pharmacy - Anaheim | 1325 N Anaheim Blvd STE 102 Anaheim, CA 92801-1202

AltaMed Pharmacy - Santa Ana, Bristol | 2720 S Bristol St Santa Ana, CA 92704-6207

AltaMed Urgent Care - Anaheim | 1325 N Anaheim Blvd STE 101 Anaheim, CA 92801-1202

### **BEHAVIORAL HEALTH SERVICES, INC.**

BHS Adelante Health Center | 2015 W 1st St STE L Santa Ana, CA 92703-3516

### **BENEVOLENCE INDUSTRIES INC**

Benevolence Industries, Inc. - Anaheim | 303 N East St Anaheim, CA 92805-3341

Benevolence Industries, Inc. - Orange | 805 W La Veta Ave STE 110 Orange, CA 92868-3933

### **CENTRAL CITY COMMUNITY HEALTH CENTER, INC**

Central City Community Health Center, Inc.- Anaheim 2 | 2243 W Ball Rd Anaheim, CA 92804-5314

Central City Community Health Center, Inc.- Benito Juarez Elementary School | 841 S Sunkist St Anaheim, CA 92806-4716

Central City Community Health Center, Inc.- Horace Mann Elementary | 600 W La Palma Ave Anaheim, CA 92801-2361

Central City Community Health Center, Inc.- Mobile 2 | 2237 W Ball Rd Anaheim, CA 92804-5314

Central City Community Health Center, Inc.- Paul Revere Elementary | 140 W Guinida Ln Anaheim, CA 92805-6101

Central City Community Health Center, Inc.- Stanton | 12116 Beach Blvd Stanton, CA 90680-3704

Central City Community Health Center, Inc. - Anaheim | 2237 W Ball Rd Anaheim, CA 92804-5314

Central City Community Health Center, Inc. - Lincoln 1 | 1820 W Lincoln Ave Anaheim, CA 92801-6730

Central City Community Health Center, Inc. - Lincoln 2 | 1814 W Lincoln Ave Anaheim, CA 92801-6730

Central City Community Health Center, Inc. - Thomas Edison Elementary School | 1526 E Romneya Dr Anaheim, CA 92805-1214

### **HURTT FAMILY HEALTH CLINIC, INC.**

Hurtt Family Health Clinic - Anaheim | 947 S Anaheim Blvd, Ste 260 Anaheim, CA 92805-5591

Hurtt Santa Ana Clinic Site, Suite F | 1100 N Tustin Ave STE F Santa Ana, CA 92705-3509

Hurtt Santa Ana Clinic Suite D | 1100 N Tustin Ave STE D Santa Ana, CA 92705-3509

Hurtt Santa Ana Clinic, Suite A | 1100 N Tustin Ave STE A Santa Ana, CA 92705-3509

### **KOREAN COMMUNITY SERVICES**

KCS Health Center - Anaheim | 451 W Lincoln Ave STE 100 Anaheim, CA 92805-2912

### **NORTH ORANGE COUNTY REGIONAL HEALTH FOUNDATION**

Family Health Matters Community Health Center | 1182 N Euclid St Anaheim, CA 92801-1900

Family Health Matters Medical Mobile Unit. | 1182 N Euclid St Anaheim, CA 92801-1900

Family Health Matters Mobile Unit | 1182 N Euclid St Anaheim, CA 92801-1900



**81**

**NUMBER OF DELIVERY SITES IN  
CONGRESSIONAL DISTRICT**

(main organization in bold)

**● SERVE THE PEOPLE, INC**

- Serve the People Behavioral Health Center | 1206 E 17th St STE 201 Santa Ana, CA 92701-2641
- Serve The People Community Health Center | 1206 E 17th St STE 101 Santa Ana, CA 92701-2641
- Serve The People Dental Clinic | 1206 E 17th St STE 104 Santa Ana, CA 92701-2641
- Serve The People Medical & Vision Center - Orange | 293 S Main St Orange, CA 92868-3843
- Serve the People Mobile Dental Clinic | 1206 E 17th St Santa Ana, CA 92701-2641
- Serve the People Mobile Dental Clinic 2 | 1206 E 17th St, Ste 101 Santa Ana, CA 92701-2641
- Serve the People Mobile Medical Clinic | 1206 E 17th St STE 101 Santa Ana, CA 92701-2641
- Serve the People Mobile Vision Clinic | 1206 E 17th St Santa Ana, CA 92701-2641
- Serve the People Mobile Vision Clinic 2 | 1206 E 17th St, Ste 101 Santa Ana, CA 92701-2641
- STP Community Health Center + | 1206 E 17th St, Ste 105 Santa Ana, CA 92701-2641

**● SHARE OUR SELVES CORPORATION**

- SOS-El Sol Wellness Center-Broadway | 1014 N Broadway Santa Ana, CA 92701-3408

**● ST. JUDE NEIGHBORHOOD HEALTH CENTERS**

- La Amistad Health Center | 725 W La Veta Ave, Ste 260 Orange, CA 92868-4439
- Puente A La Salud Mobile Clinics. | 280 N Sullivan St Santa Ana, CA 92703-3416
- SJNHC - Pediatric Health Center | 363 S Main St STE 310 Orange, CA 92868-3818
- SJNHC - Women's Health Center | 363 S Main St STE 320 Orange, CA 92868-3818
- St. Jude Neighborhood Health Centers' Mobile Clinic | 731 S Highland Ave Fullerton, CA 92832-2753
- St. Jude Neighborhood Health Centers' Ponderosa Health Center | 330 E Orangewood Ave Anaheim, CA 92802-4313
- St. Jude Neighborhood Health Centers - Finamore Place | 915 E Orangewood Ave STE 200 Anaheim, CA 92802-4505
- St. Jude Neighborhood Health Centers | 731 S Highland Ave Fullerton, CA 92832-2753

**● UNIVERSITY OF CALIFORNIA IRVINE**

- UC Irvine Family Health Center- Anaheim | 2441 W La Palma Ave Anaheim, CA 92801-2658
- UC Irvine Family Health Center- Anaheim | 2441 W La Palma Ave STE 100 Anaheim, CA 92801-2658
- UC Irvine Family Health Center - Santa Ana | 800 N Main St Santa Ana, CA 92701-3576
- UC Irvine Mobile Medicine Unit | 800 N Main St Santa Ana, CA 92701-3576

**▲ HEALTH CENTER PROGRAM LOOK-ALIKES**

Health Center Program Look-Alikes are community-based health care providers that meet the requirements of the HRSA Health Center Program, but do not receive Health Center Program funding.

**ACCESS COMMUNITY HEALTH CENTER**

- Access-Santa Ana | 520 N Main St, Ste 120 Santa Ana, CA 92701-4623



NATIONAL ASSOCIATION OF  
Community Health Centers®

**Representative Lou Correa**  
119th United States Congress

California's **46<sup>TH</sup>** Congressional District

**81**

## **NUMBER OF DELIVERY SITES IN CONGRESSIONAL DISTRICT**

(main organization in bold)

### **CELEBRATING LIFE COMMUNITY HEALTH CENTER**

CLCHC - SANO Santa Ana | 1444 S Main St Santa Ana, CA 92707-1717

### **COMMUNITY MEDICINE INC**

Community Medicine Inc., Santa Ana | 301 N Main St BLDG Santa Ana, CA 92701-4852

### **LIVINGSTONE COMMUNITY DEVELOPMENT CORPORATION**

Livingstone Community Health Clinic | 12362 Beach Blvd, Ste 10 Stanton, CA 90680-3944

### **SAINT YOUSTINA**

Saint Youstina | 809 S Main St STE A Santa Ana, CA 92701-6605

Saint Youstina Dental | 809 S Main St STE B Santa Ana, CA 92701-6605