



# Preparing our Teams for the Worst of Times

AMY COLLIER CARROLL, CHIEF COMMUNICATIONS OFFICER  
LUIS GARCIA, SAFETY COORDINATOR



**GOLDEN VALLEY**  
HEALTH CENTERS

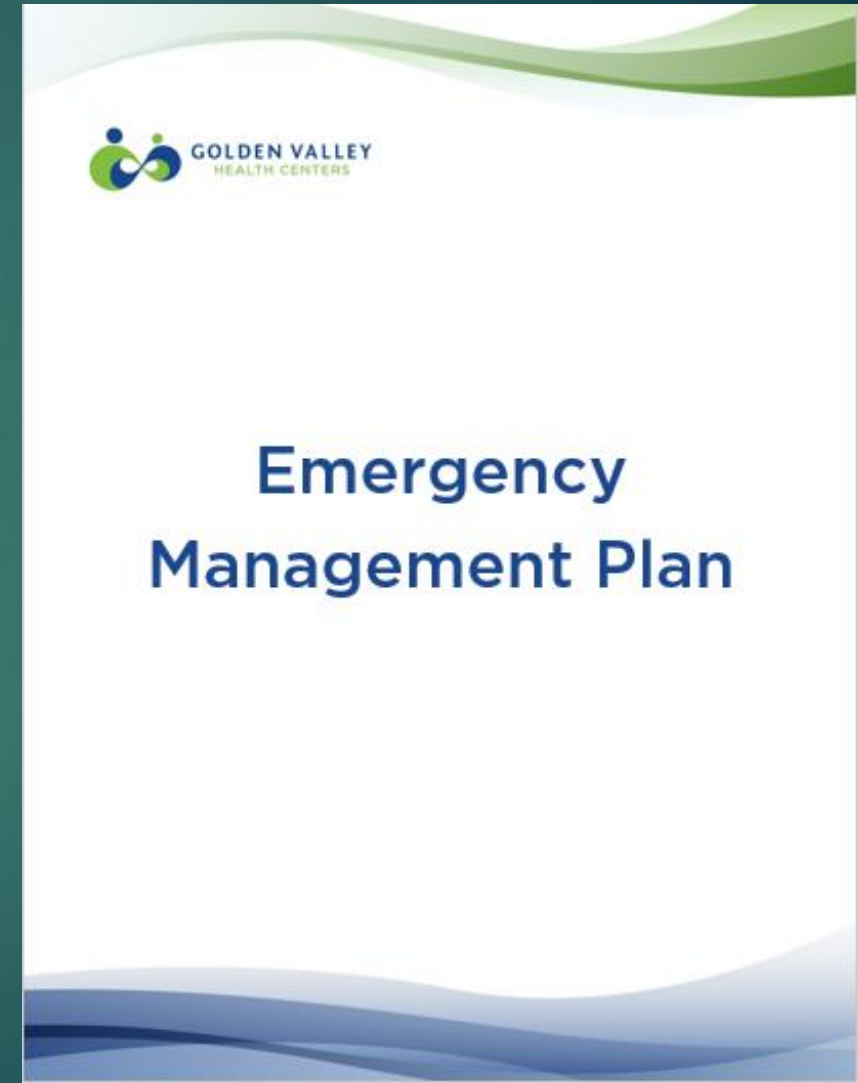
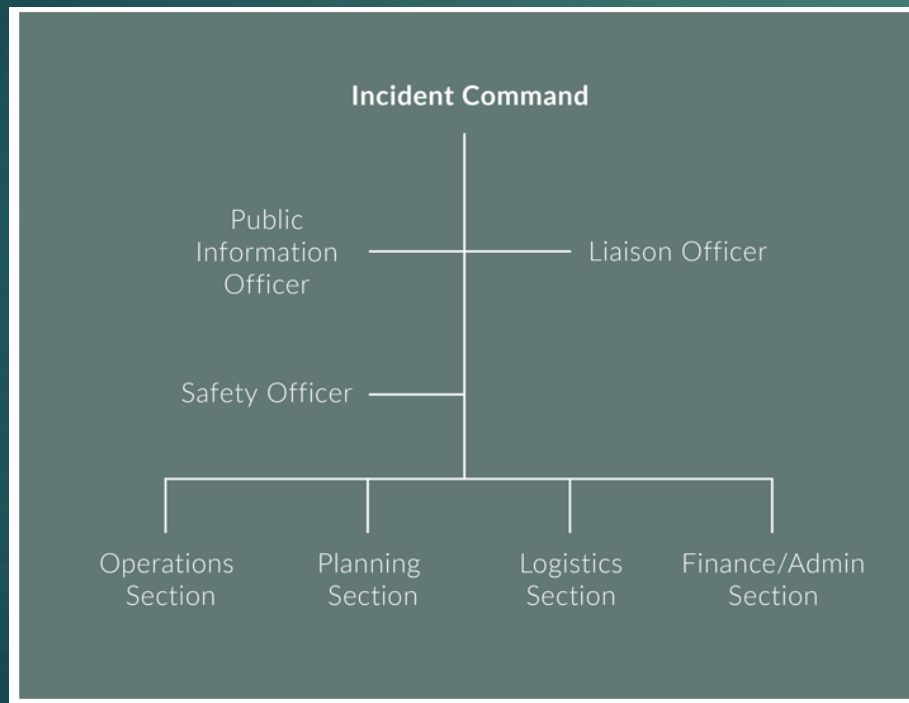
# An Historical Perspective

Crisis Response



# Who's on First?


- Emergency Incident Workflow
- Incident Command
- Operational Leadership



# Hazard & Risk Assessment Cross Departmental Collaboration (Internal Process)

Risk Assessment:

- Safety Committee
- Hazard Vulnerability Assessment
- Emergency Management Plan
- Hazard Specific Plans

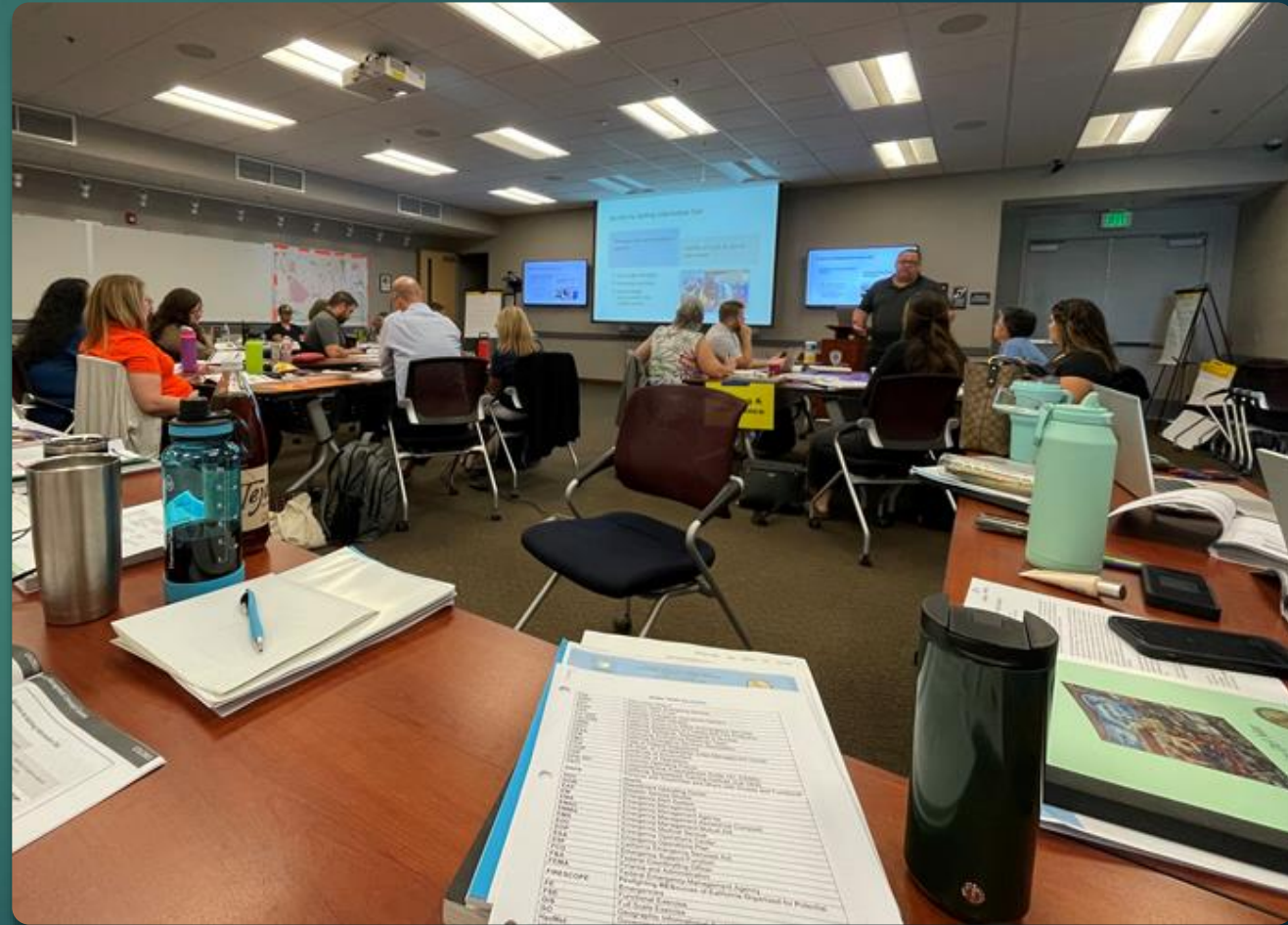


2024	
TOP 10 HVA	RANK
Acts of Intent	1
Flood	2
Active Shooter	3
Weapon	4
Communication / <u>Telephony Failure</u>	5
Earthquake	6
Power Outage	7
Epidemic	8
Inclement Weather	9
Workplace Violence / Threat	10

# Hazard & Risk Assessment Community Partnerships (External Process)

Collaborative Efforts & Critical Partnerships:

- CPCA
- CVHN
- OES
- Mariposa & Merced Healthcare Partnership For Emergency Preparedness Coalition
- Stanislaus County Healthcare Emergency Preparedness Coalition
- County & City Safety Services



# Keeping Staff Safe Means Keeping Them Informed

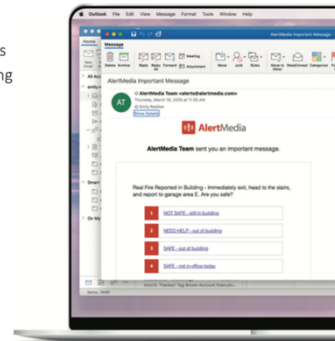


 AlertMedia + Right Click and select "Change Picture" to place **YOUR COMPANY LOGO**

Be prepared.  
Stay informed.

**Help us keep you safe.** AlertMedia is a fast and reliable way to send [Company Name] employees important messages, keeping you informed during critical events. You will receive these emergency notifications on various channels including: text, voice call, email, desktop and mobile app during incidents like:

-  OFFICE CLOSURES
-  SECURITY RISKS
-  INCLEMENT WEATHER
-  SYSTEM OR FACILITY ISSUES
-  ANY OTHER CRITICAL EVENT



Download the  
AlertMedia App today.



Contact [EMAIL] with questions.



# Organizational Readiness

## GVHC Safety Training Strategy

- De-Escalation Training
- Active Shooter Drills
- HICS TTX



# The Keys to Continuity of Care

- Prioritizing safety and training of all staff
- Keeping Operations Going
- Clinic Hours/Temporary Closures
- Challenges
- Scheduling Training Exercises







Questions?