



NATIONAL ASSOCIATION OF
Community Health Centers®

HEALTH CENTER PROFESSIONAL DEVELOPMENT PROGRAM

PERSON-CENTERED CARE FOR INDIVIDUALS WITH HIGHER WEIGHT

POWERED BY



Association of
Diabetes Care & Education
Specialists

KICK-OFF WEBINAR

MAY 1, 2024

12:00 – 12:45 PM ET



THE NACHC MISSION

America's Voice for Community Health Care

The National Association of Community Health Centers (NACHC) was founded in 1971 to promote efficient, high quality, comprehensive health care that is accessible, culturally and linguistically competent, community directed, and patient centered for all.





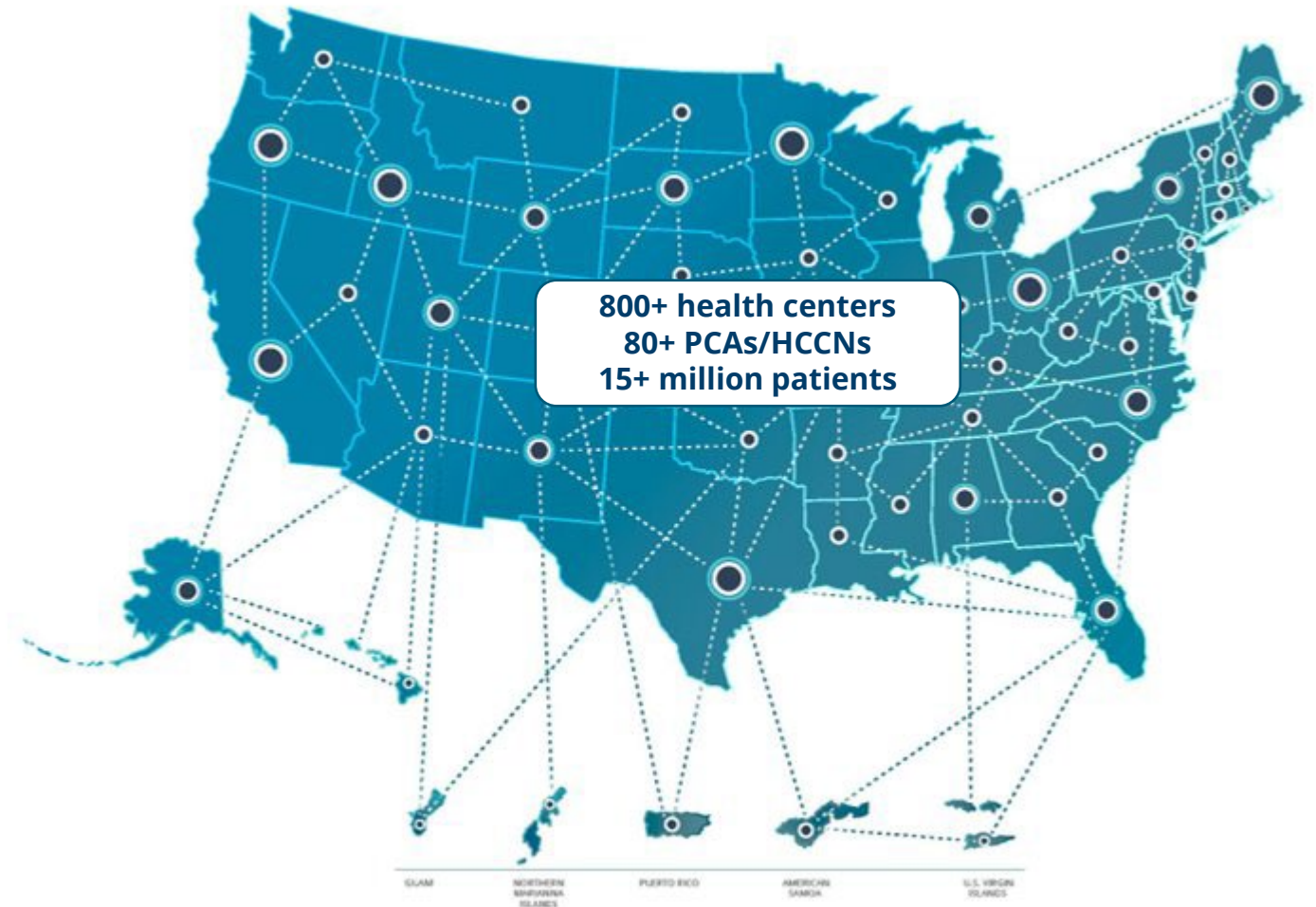
Welcome!

You are part of a national community of health center staff who are working to provide care and resources to the health center patients who need it most.

An exciting opportunity to learn, share, and grow in your role.

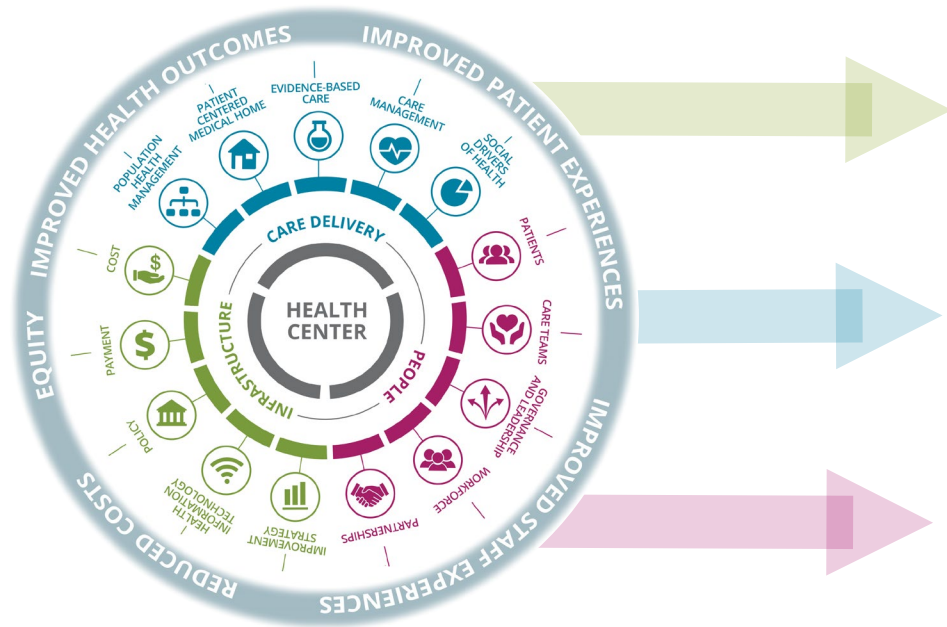
8 health center staff participants strong!

This Professional Development Course is a NEW offering through NACHC's Elevate National Learning Forum





NACHC's Elevate National Learning Forum



- ✓ Monthly webinars
- ✓ Supplemental sessions
- ✓ Evidence-Based Action Guides
- ✓ Action Briefs
- ✓ eLearning modules
- ✓ Tools & Resources
- ✓ [Online Learning Platform](#)
- ✓ NEW Professional Development Courses, including:


PERSON-CENTERED CARE FOR INDIVIDUALS WITH HIGHER WEIGHT

Provides guided application of the Value Transformation Framework

For more information on how to leverage the VTF and Elevate for systems transformation, review the [Action Brief: How to Use the VTF and Elevate](#)



Course Content

 Association of Diabetes Care & Education Specialists

Quality Center

My Learning My Credits Support About ADCES Online Learning

Person-Centered Care for Individuals who have Higher Weight: A Certificate Program (2nd edition) (CPIHW004) **(Incomplete)**

Welcome

Welcome to ADCES' Person-Centered Care for Individuals who have Higher Weight: A Certificate Program.

Start by reading the Program Overview and Disclosures.

You must complete the pre-test, view all seven (7) modules, pass the 35-question post-test, and complete the final program evaluation in order to earn your CE/CME credit.

[CE expiration date: 8/17/2025]

Activities

- ✓ Program Overview and Disclosures
You must read this section before moving on to the coursework.

Pre-Test

You must complete this 35-question pre-test in order to open the modules.

Activities

- ✓ Pre-Test
Estimated Time: 15 minutes

Attempts

Coursework

A copy of the presentation slides can be found under the Resources below.

You must view all modules for it to count as complete.

Activities

- ✓ Scope of the Problem
- ✓ Psychological Considerations
- ✓ Obesity as a Chronic Disease
- Lifestyle Treatment
- Treatment Options
- Behavior Change
- Counseling Caveats

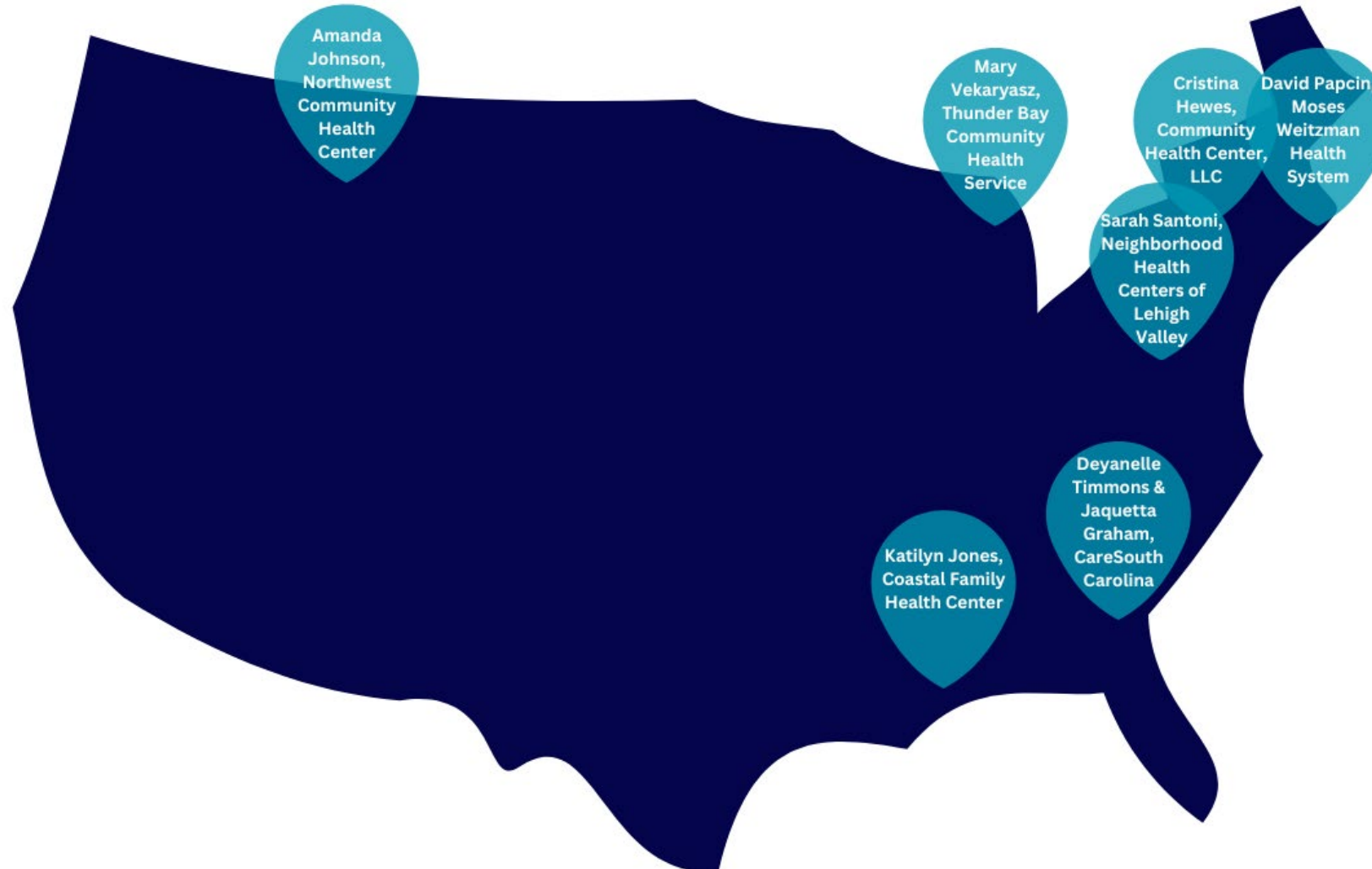
Post-Learning Assessment

Evaluation Survey and CE Credit

Certificate of Program Completion

ADCES 'My Learning'

Meet Your Colleagues



Meet Your Colleagues

Name	Position	Health Center	State
Deyanelle Timmons	Community Health Worker	CareSouth Carolina	South Carolina
Jaquetta Graham	Program Coordinator	CareSouth Carolina	South Carolina
Katilyn Jones	Nurse Practitioner	Coastal Family Health Center	Mississippi
Cristina Hewes	Senior Staff Nurse	Community Health Center LLC	New York
David Papcin	Staff Nurse	Moses Weitzman Health System	Connecticut
Sarah Santoni	Certified Clinical MA	Neighborhood Health Centers of Lehigh Valley	Pennsylvania
Amanda Johnson	Case Manager	Northwest Community Health Center	Montana
Mary Vekaryasz	RN	Thunder Bay Community Health Service, Inc.	Michigan



Related Resources

Increase the impact of **diabetes prevention and management** at health centers.

Healthy Together is a lifestyle change program that blends:

- ✓ Virtual care
- ✓ Self-care tools
- ✓ Lifestyle coaching following the CDC's National Diabetes Prevention Program curriculum

Recorded Webinar: National Diabetes Prevention Program - Basics for Health Centers

Coming Soon: National DPP Curriculum Module Recording Library

The graphic is a vertical rectangular poster with a blue gradient background. At the top, there is a photograph of various items: a white water bottle, a measuring tape, a bunch of carrots, a pepper, and a digital blood glucose meter showing a reading of 6.4. The 'Healthy Together' logo, which consists of a blue water drop shape containing two stylized human figures, is positioned in the upper right of the photo area. Below the photo, the text 'Project Summary' is written in a large, white, sans-serif font. Underneath this, a smaller line of text reads: 'A step-by-step guide to implement the Centers for Disease Control and Prevention's National Diabetes Prevention Program curriculum using patient self-care tools in a virtual setting and applying a whole-person focus.' At the bottom left, the date 'June 2023' is printed in small white text. At the bottom right, there is a small white icon of a building with a flag on top, and below it, the text 'NATIONAL ASSOCIATION OF Community Health Centers' in a small, white, sans-serif font.

Healthy Together

Project Summary

A step-by-step guide to implement the Centers for Disease Control and Prevention's National Diabetes Prevention Program curriculum using patient self-care tools in a virtual setting and applying a whole-person focus.

June 2023

NATIONAL ASSOCIATION OF
Community Health Centers



Related Resources



[Care Management Action Guide](#)

[SDOH Action Guide](#)

[Risk Stratification Action Guide](#)

...and MORE!



Complete the **VTF Assessment**

Health centers are required to complete the VTF Assessment for course participation... WHY?

The VTF Assessment enables health centers to measure progress in areas important to value transformation.

Staff engagement and professional development opportunities are both important components!



For more information on the VTF Assessment, review the [Action Brief: Assess Transformation Progress](#)



Complete the VTF Assessment

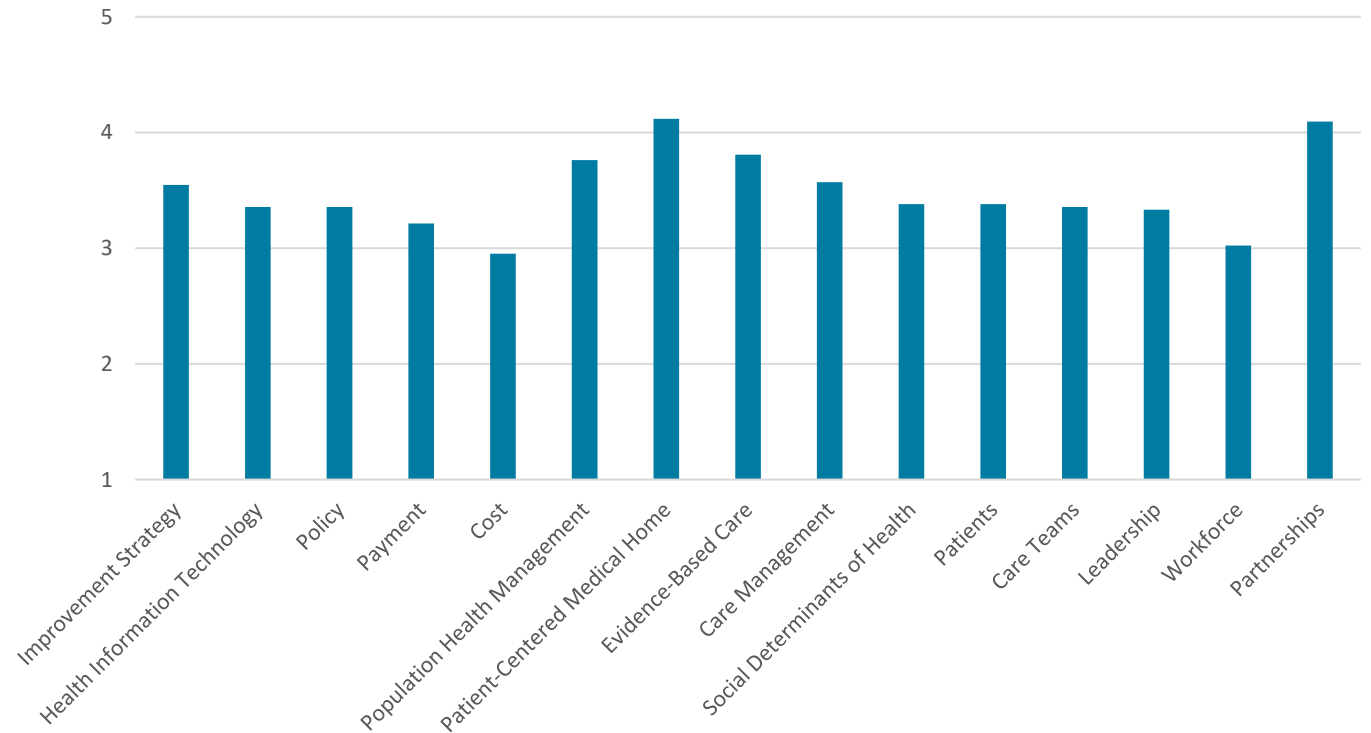
NOTE: The tool assesses organizational progress.

The individual participating in the training does NOT have to be the person who completes the Assessment.

*While it is encouraged that multiple staff across an organization complete the tool, with results shared and discussed, only **one individual from each participating health center needs to complete an assessment.***

The VTF Assessment is best completed by health center staff who have knowledge of a wide range of health center systems (e.g., leadership, finance, clinical care, etc.).

Healthy Weight Participants
Average Score by VTF Change Area

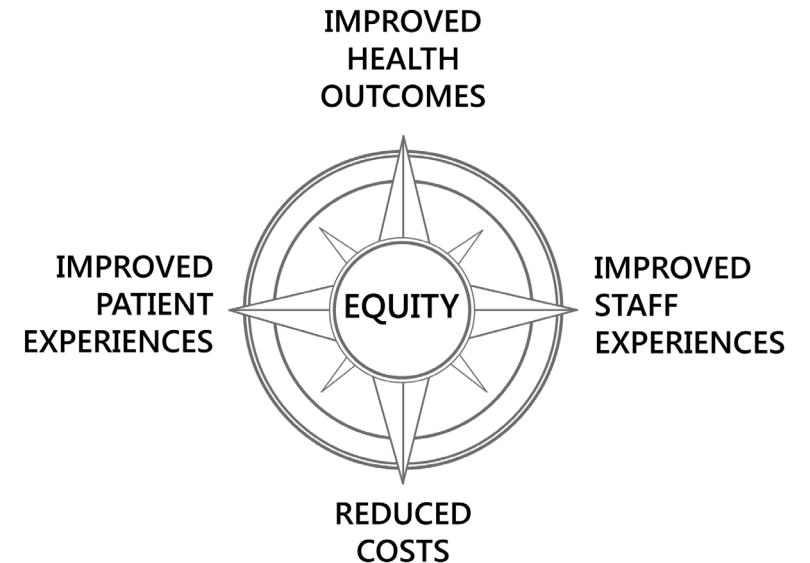
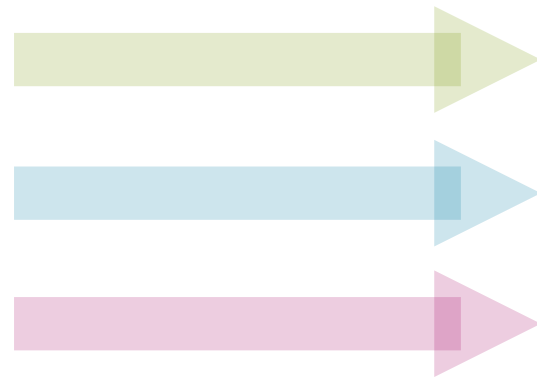




Healthy Weight Course

- The NACHC Quality Center recognizes the critical importance of providing access to training opportunities for health center professionals to build skills, develop competencies, and advance careers while driving improved patient care and health outcomes.
- These trainings support health centers to achieve the Quintuple Aim

**Improved Health Center
Performance
through
Systems Transformation**





Contact Us!

The NACHC Quality Center team is here to help!

Questions on how to access online content? VTF Assessment?

Contact QualityCenter@NACHC.org

This project was supported by the Health Resources and Services Administration (HRSA) of the U.S. Department of Health and Human Services (HHS) as part of an award totaling \$6,625,000 with 0 percentage financed with non-governmental sources. The contents are those of the author(s) and do not necessarily represent the official views of, nor an endorsement, by HRSA, HHS, or the U.S. Government. For more information, please visit HRSA.gov.