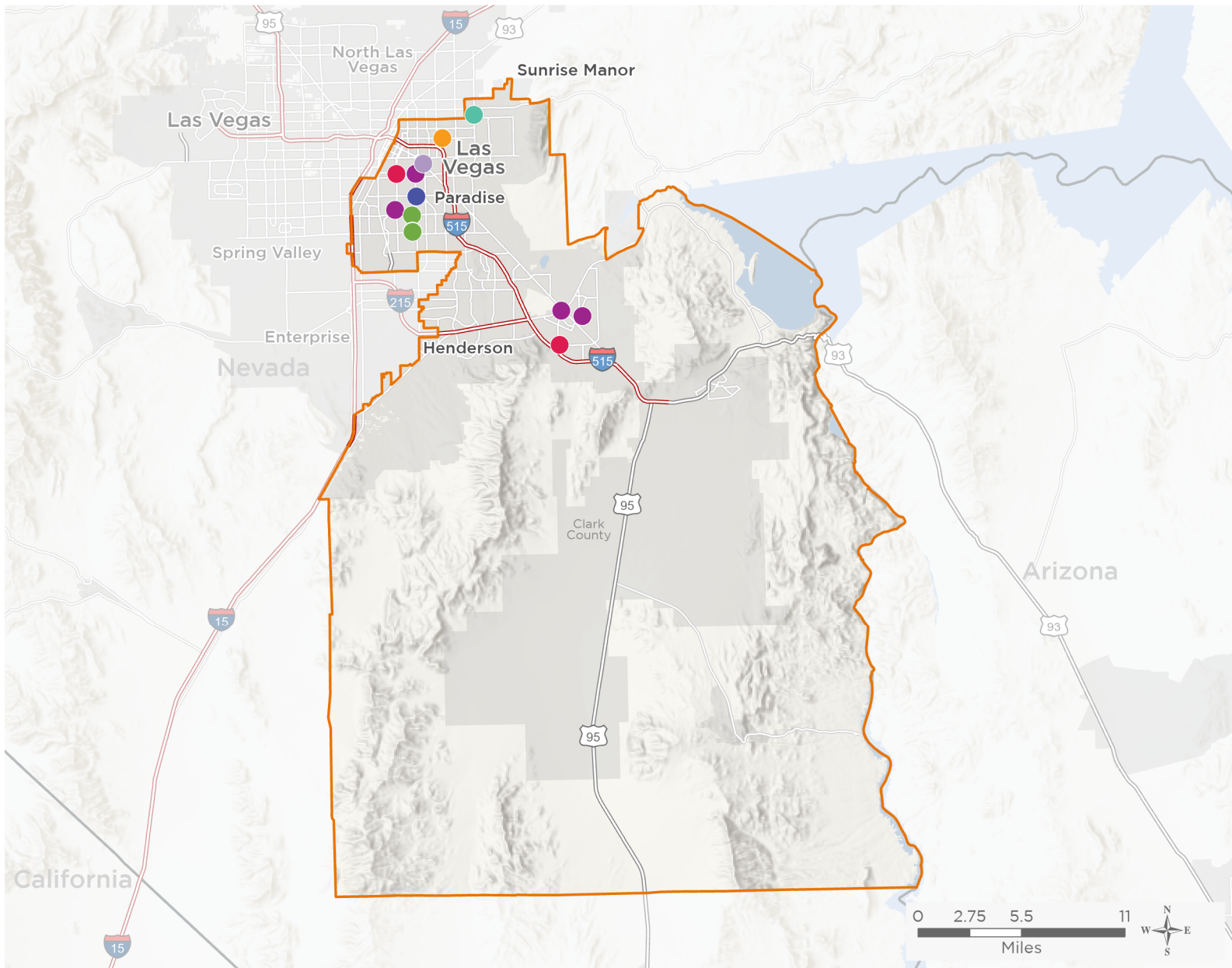




The 7 federally-funded health center organizations with a presence in Nevada's 1st Congressional District leverage **\$20,689,254** in federal investments to serve **102,201** patients.



13

**NUMBER OF DELIVERY SITES
IN CONGRESSIONAL DISTRICT**

- Federally-funded Delivery Site (each color represents one organization)
- Health Center Program Look-Alikes
- 118th Congressional District Boundaries
- County Boundaries
- Populated Places
- Interstates
- Highways
- Major Roads

Notes | Delivery sites represent locations of organizations funded by the federal Health Center Program. Health Center Program Look-Alikes are community-based health care providers that meet the requirements of the HRSA Health Center Program, but do not receive Health Center Program funding. Some locations may overlap due to scale or may otherwise not be visible when mapped. Federal investments represent the total funding from the federal Health Center Program to grantees with a presence in the state in 2021.

Sources | Federally-Funded Delivery Site Locations and Health Center Program Look-Alikes: data.HRSA.gov, December 2022.
Health Center Patients and Federal Funding | 2021 Uniform Data System, Bureau of Primary Health Care, HRSA.



13

**NUMBER OF DELIVERY SITES IN
CONGRESSIONAL DISTRICT**

(main organization in bold)

- ALL FOR HEALTH, HEALTH FOR ALL, INC.**
All For Health, Las Vegas | 1735 N Nellis Blvd STE G Las Vegas, NV 89115-3671
- FIRST PERSON CARE CLINIC**
First Person Care Clinic | 200 E Horizon Dr Henderson, NV 89015-8033
Huntridge Dental Center | 2100 S Maryland Pkwy Ste 5 Las Vegas, NV 89104-3225
- FIRSTMED HEALTH AND WELLNESS CENTER**
FirstMed Health and Wellness Center | 3343 S Eastern Ave Las Vegas, NV 89169-3312
- HOPE CHRISTIAN HEALTH CENTER**
Mater Academy | 3900 E Bonanza Rd Las Vegas, NV 89110-2167
- NEVADA HEALTH CENTERS, INC.**
Cambridge Family Hlth Ctr | 3900 Cambridge St STE 102 Las Vegas, NV 89119-7440
Eastern Family Medical and Dental Center | 2212 S Eastern Ave Las Vegas, NV 89104-4124
Henderson Family Health Center | 98 E Lake Mead Pkwy Henderson, NV 89015-5540
Nevada Health Centers - Bower School Based at Basic Academy | 400 Palo Verde Dr Henderson, NV 89015-6028
- SILVER STATE HEALTH SERVICES**
Flamingo | 2121 E Flamingo Rd Las Vegas, NV 89119-5122
Silver State Health Services- Renaissance | 2255 Renaissance Dr Ste A Las Vegas, NV 89119-6194
Silver State Health Services- Renaissance | 2215 Renaissance Dr Ste C Las Vegas, NV 89119-6729
- SOUTHERN NEVADA HEALTH DISTRICT**
Southern Nevada Health District - East Las Vegas | 2830 Fremont St Las Vegas, NV 89104-2206