



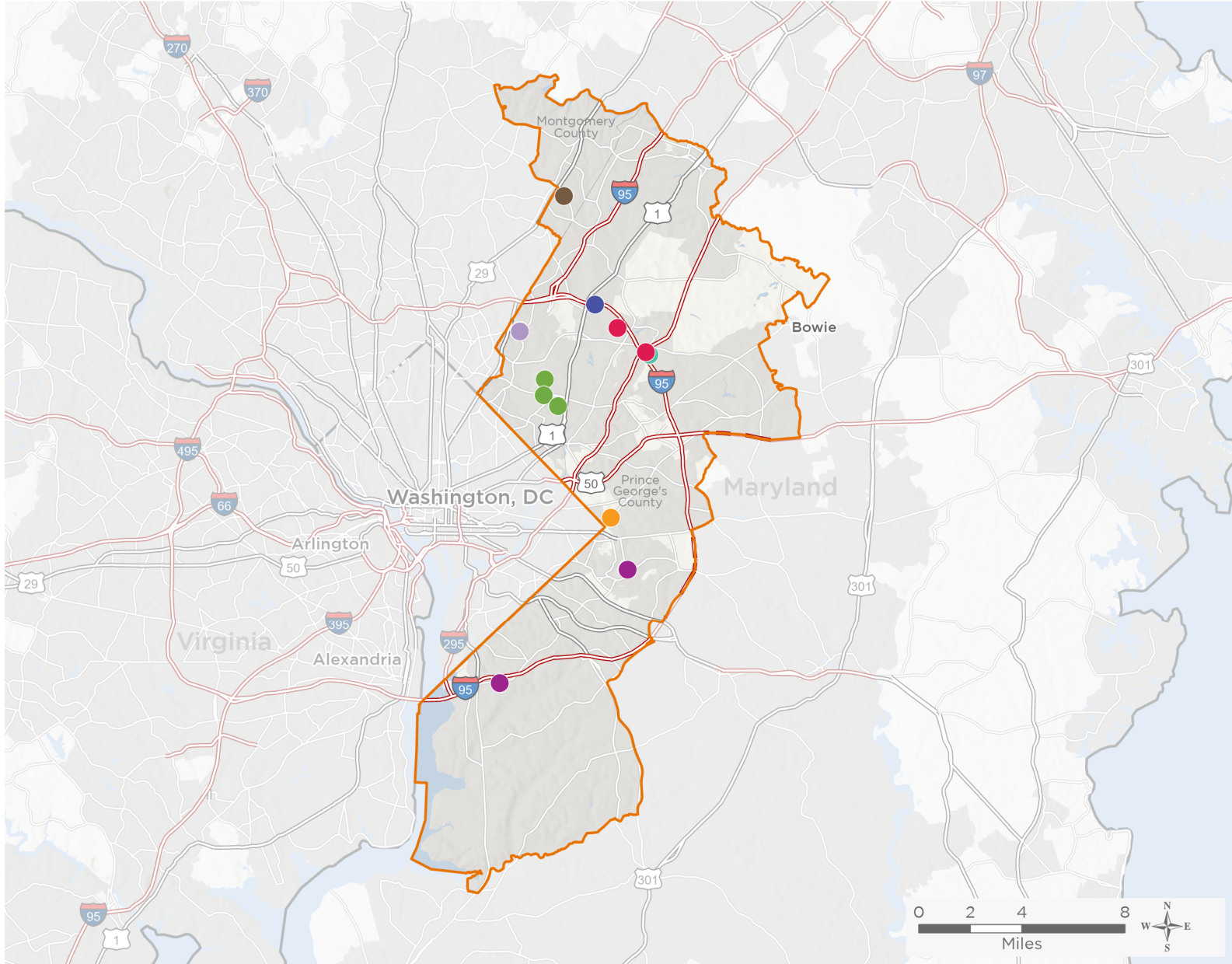
NATIONAL ASSOCIATION OF
Community Health Centers

Representative Glenn Ivey

118th United States Congress

Maryland's **4TH** Congressional District

The 8 federally-funded health center organizations with a presence in Maryland's 4th Congressional District leverage **\$28,986,005** in federal investments to serve **182,777** patients.



15

**NUMBER OF DELIVERY SITES
IN CONGRESSIONAL DISTRICT**

- Federally-funded Delivery Site (each color represents one organization)
- Health Center Program Look-Alikes
- 118th Congressional District Boundaries
- County Boundaries
- Interstates
- Highways
- Populated Places
- Major Roads

Notes | Delivery sites represent locations of organizations funded by the federal Health Center Program. Health Center Program Look-Alikes are community-based health care providers that meet the requirements of the HRSA Health Center Program, but do not receive Health Center Program funding. Some locations may overlap due to scale or may otherwise not be visible when mapped. Federal investments represent the total funding from the federal Health Center Program to grantees with a presence in the state in 2021.

Sources | Federally-Funded Delivery Site Locations and Health Center Program Look-Alikes: data.HRSA.gov, December 2022.
Health Center Patients and Federal Funding | 2021 Uniform Data System, Bureau of Primary Health Care, HRSA.

© National Association of Community Health Centers, 2023. For more information, please contact federalaffairs@nachc.org.



15

**NUMBER OF DELIVERY SITES IN
CONGRESSIONAL DISTRICT**

(main organization in bold)

- BALTIMORE MEDICAL SYSTEM, INC.**
AbsoluteCARE of MD2, LLC | 7501 Greenway Center Dr STE 600 Greenbelt, MD 20770-6704
- COMMUNITY CLINIC INC**
CCI-Greenbelt | 9220 Springhill Ln Greenbelt, MD 20770-1203
CCI-Greenway | 7474 Greenway Center Dr STE 300 Greenbelt, MD 20770-3504
- ELAINE ELLIS CENTER OF HEALTH, INC.**
College Park | 10001 Rhode Island Ave College Park, MD 20740-1141
- FAMILY AND MEDICAL COUNSELING SERVICE INC**
FMCS-Seat Pleasant | 5936 Martin Luther King Jr Hwy Capitol Heights, MD 20743-1757
- GREATER BADEN MEDICAL SERVICE INC**
Greater Baden Medical Services at Capital Heights | 1458 Addison Rd S Capitol Heights, MD 20743-4413
Greater Baden Medical Services at Capitol Heights II | 1442 Addison Rd S Capitol Heights, MD 20743-4413
Greater Baden Medical Services at Oxon Hill | 6196 Oxon Hill Rd STE 540 Oxon Hill, MD 20745-3112
- LA CLINICA DEL PUEBLO, INC.**
Hyattsville Middle School | 6001 42nd Ave Hyattsville, MD 20781-1522
La Clinica del Pueblo - Hyattsville Site | 2970 Belcrest Center Dr STE 301 Hyattsville, MD 20782-1987
Northwestern High School | 7000 Adelphi Rd Hyattsville, MD 20782-1454
- MARY'S CENTER FOR MATERNAL AND CHILD CARE, INC.**
Cool Spring Elementary School | 8910 Riggs Rd Hyattsville, MD 20783-1632
Mary's Center - Adelphi MD | 8908 Riggs Rd Hyattsville, MD 20783-1632
Mary's Center Dental Bus | 8908 Riggs Rd Hyattsville, MD 20783-1632
- MOBILE MEDICAL CARE, INC.**
MobileMed East Montgomery Service Center | 3300 Briggs Chaney Rd Silver Spring, MD 20904-4811