



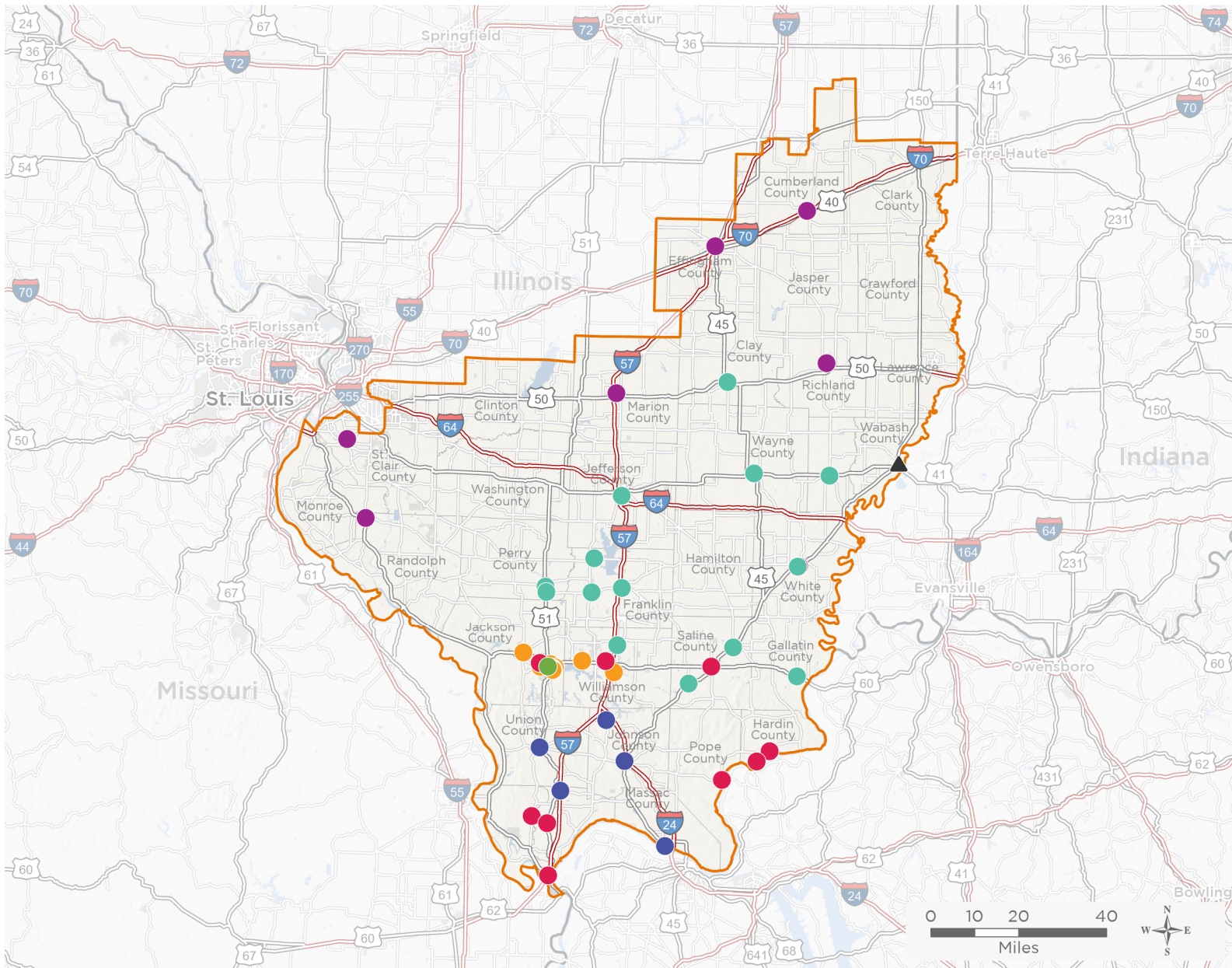
NATIONAL ASSOCIATION OF  
Community Health Centers

# Representative Mike Bost

## 118th United States Congress

Illinois's **12<sup>TH</sup>** Congressional District

The 6 federally-funded health center organizations with a presence in Illinois's 12th Congressional District leverage **\$40,151,913** in federal investments to serve **248,552** patients.



**52**

**NUMBER OF DELIVERY SITES  
IN CONGRESSIONAL DISTRICT**

- Federally-funded Delivery Site (each color represents one organization)
- Health Center Program Look-Alikes
- 118th Congressional District Boundaries
- County Boundaries
- Interstates
- Highways
- Populated Places
- Major Roads

Notes | Delivery sites represent locations of organizations funded by the federal Health Center Program. Health Center Program Look-Alikes are community-based health care providers that meet the requirements of the HRSA Health Center Program, but do not receive Health Center Program funding. Some locations may overlap due to scale or may otherwise not be visible when mapped. Domestic violence shelters are excluded from the map and delivery site statistics. Federal investments represent the total funding from the federal Health Center Program to grantees with a presence in the state in 2021.

Sources | Federally-Funded Delivery Site Locations and Health Center Program Look-Alikes: data.HRSA.gov, December 2022.  
Health Center Patients and Federal Funding | 2021 Uniform Data System, Bureau of Primary Health Care, HRSA.

© National Association of Community Health Centers, 2023. For more information, please contact [federalaffairs@nachc.org](mailto:federalaffairs@nachc.org).



**52**

**NUMBER OF DELIVERY SITES IN  
CONGRESSIONAL DISTRICT**

(main organization in bold)

**CHRISTOPHER GREATER AREA RURAL HEALTH PLANNING CORPORATION**

Albion Community Health Center | 33 W Main St Albion, IL 62806-1006  
Carrier Mills Community Health Center | 7211 US 45 S Carrier Mills, IL 62917-1305  
Christopher Greater Area Rural Health Planning Corporation & Rea Clinic | 4241 IL-14 Christopher, IL 62822-1037  
Clay Medical Center | 165 Kinnaman Dr Flora, IL 62839-4204  
CRHPC-Carmi Health Center | 103 Commerce St Carmi, IL 62821-2223  
CRHPC Comprehensive Behavioral Health Center | 119 Gas Plant Rd Du Quoin, IL 62832-3866  
Eldorado Rural Health Clinic | 1401 US Highway 45 N Eldorado, IL 62930-3770  
Fairfield Community Health Center | 209 NW 11th St Fairfield, IL 62837-1218  
Johnston City Community Health Center | 14410 Route 37 Johnston City, IL 62951-3166  
Mt Vernon Community Hlth Center | 2920 Veterans Memorial Dr Mount Vernon, IL 62864-5924  
Rea Clinic - Benton | 206 E Church St STE B Benton, IL 62812-2239  
Rea Clinic - Du Quoin | 1564 S Washington St Du Quoin, IL 62832-3849  
Sesser Community Health Center | 6294 State Highway 154 Sesser, IL 62884-2163  
Shawneetown Community Health Center | 9525 Gold Hill Rd Shawneetown, IL 62984-3659

**COMMUNITY HEALTH & EMERGENCY SERVICES INC**

Cairo Diagnostic Center Site | 13289 Kessler Rd Cairo, IL 62914-3101  
Cairo Mega Clinic | 13245 Kessler Rd Cairo, IL 62914-3101  
Carmi Community Health Center | 1400 W Main St Carmi, IL 62821-1387  
Cedar Court Clinic | 1340 Cedar Ct Carbondale, IL 62901-5336  
CHESI WOW Van | 13245 Kessler Rd Cairo, IL 62914-3101  
CHESI Marion Centre Clinic | 3111 Williamson County Pkwy Marion, IL 62959-5235  
Hardin County Dental Clinic | Main St Rosiclare, IL 62982  
Hardin County Medical Clinic | IL-146 Elizabethtown, IL 62931  
Harrisburg Community Hlth Center | 205 N Main St Harrisburg, IL 62946-1256  
Pope County Medical Clinic | 217 S Adams St Golconda, IL 62938-1134  
Pulaski Clinic | 100 Market St Pulaski, IL 62976  
Tamms Health Center | 290 Railroad St Tamms, IL 62988-5038

**RURAL HEALTH INC**

ANNA MEDICAL CLINIC | 513 N Main St Anna, IL 62906-1668  
Dongola Medical Clinic | 318 US Highway 51 N Dongola, IL 62926-1103  
Goreville Medical Clinic | 211 N Broadway Goreville, IL 62939-2323  
Metropolis Medical Clinic | 1003 E 5th St Metropolis, IL 62960-2311  
Vienna Medical Clinic | 803 N 1st St Vienna, IL 62995-1544

**SHAWNEE HEALTH SERVICE & DEVL P**

Carbondale Middle School Health Center | 1150 E Grand Ave RM 127 Carbondale, IL 62901-3422



**52**

**NUMBER OF DELIVERY SITES IN  
CONGRESSIONAL DISTRICT**

(main organization in bold)

**● SHAWNEE HEALTH SERVICE & DEVL P**

Lewis School Health Center | 801 S Lewis Ln RM 153 Carbondale, IL 62901-3408  
Marion Wellness | 1700 Wildcat Dr STE A Marion, IL 62959-1513  
Parrish Elementary School Health Center | 121 N Parrish Ln RM 123 Carbondale, IL 62901-2024  
Shawnee Health Care, Carbondale | 400 S Lewis Ln Carbondale, IL 62901-3547  
Shawnee Health Care, Carbondale Dental | 402 S Lewis Ln Carbondale, IL 62901-3547  
Shawnee Health Care, Carterville | 1006 S Division St Carterville, IL 62918-1539  
Shawnee Health Care, Marion | 3111 Williamson County Pkwy Marion, IL 62959-5235  
Shawnee Health Care, Marion Dental | 3115 Williamson County Pkwy Marion, IL 62959-5235  
Shawnee Health Care, Murphysboro | 7 S Hospital Dr Murphysboro, IL 62966-3333  
Shawnee Health Care, OB/GYN | 101 S Wall St Carbondale, IL 62901-3021  
Shawnee Health Care, Same Day | 404 S Lewis Ln Carbondale, IL 62901-3547  
Terrier Care | 1301 E Walnut St RM J120 Carbondale, IL 62901-5004  
Thomas Elementary School Health Center | 1025 N Wall St RM 102 Carbondale, IL 62901-1737

**● SOUTHERN ILLINOIS HEALTH CARE FOUNDATION, INC.**

Cumberland County Health Center | 302 N Mill St Greenup, IL 62428-1062  
Effingham Health Center | 900 W Temple Ave STE 208 Effingham, IL 62401-2187  
Millstadt Medical Clinic | 60 Regency Pl Millstadt, IL 62260-2210  
Red Bud Health Center | 824 Locust St Red Bud, IL 62278-1209  
Salem Medical Center | 1275 Hawthorn Rd Salem, IL 62881-1028  
SIHF Weber Medical Clinic | 1200 N East St Olney, IL 62450-2432

**● SOUTHERN ILLINOIS UNIVERSITY SCHOOL OF MEDICINE**

SIU Center for Family Medicine-Carbondale | 300 W Oak St Carbondale, IL 62901-1400

**▲ HEALTH CENTER PROGRAM LOOK-ALIKES**

Health Center Program Look-Alikes are community-based health care providers that meet the requirements of the HRSA Health Center Program, but do not receive Health Center Program funding.

**WABASH GENERAL HOSPITAL DISTRICT**

Wabash Community Health Center | 1123 Chestnut St Mount Carmel, IL 62863-1212