



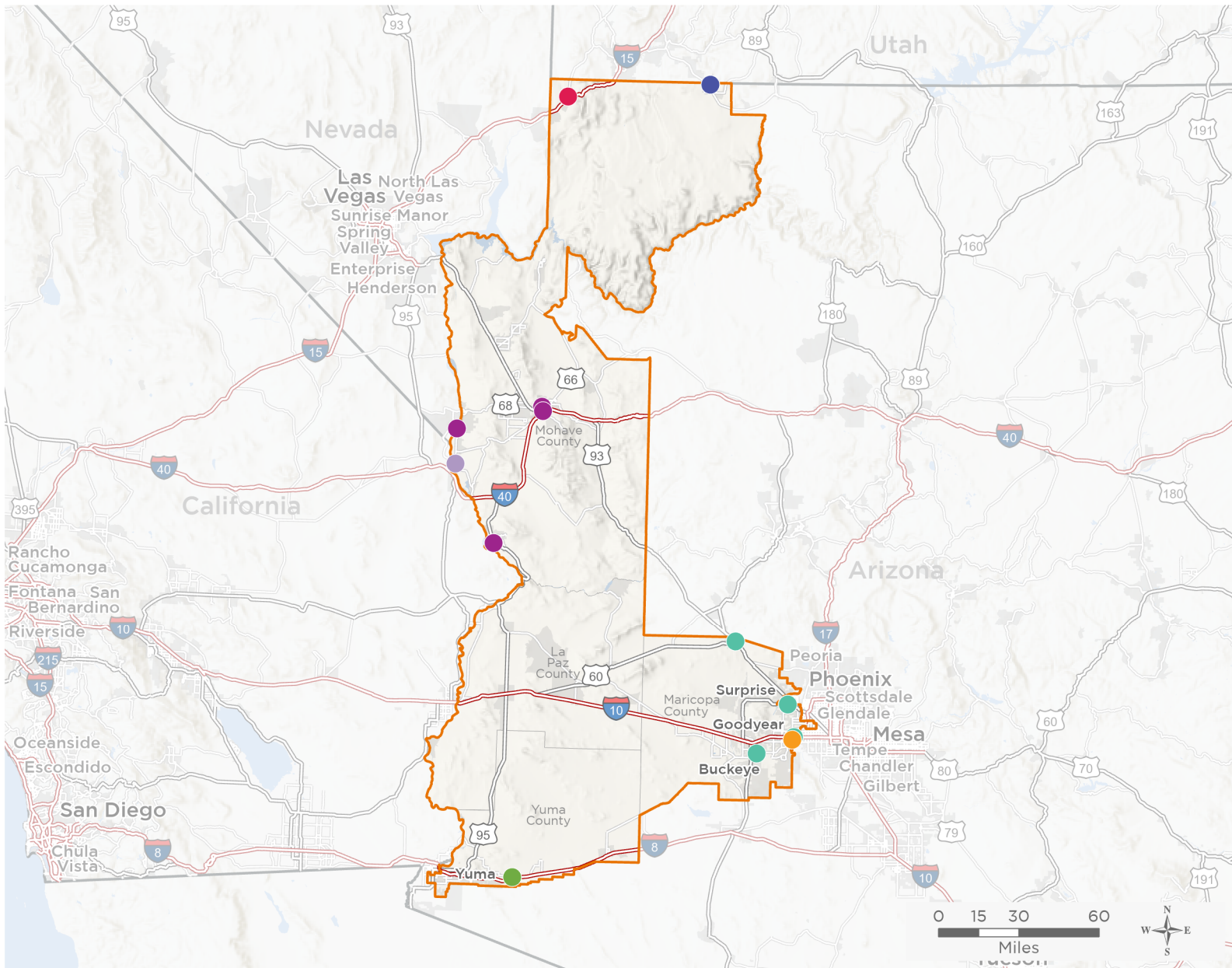
NATIONAL ASSOCIATION OF  
Community Health Centers

# Representative Paul Gosar

## 118th United States Congress

Arizona's **9<sup>TH</sup>** Congressional District

The 7 federally-funded health center organizations with a presence in Arizona's 9th Congressional District leverage **\$35,710,540** in federal investments to serve **296,604** patients.



- Federally-funded Delivery Site (each color represents one organization)
- Health Center Program Look-Alikes
- 118th Congressional District Boundaries
- County Boundaries
- Interstates
- Highways
- Populated Places
- Major Roads

**21**

**NUMBER OF DELIVERY SITES  
IN CONGRESSIONAL DISTRICT**

Notes | Delivery sites represent locations of organizations funded by the federal Health Center Program. Health Center Program Look-Alikes are community-based health care providers that meet the requirements of the HRSA Health Center Program, but do not receive Health Center Program funding. Some locations may overlap due to scale or may otherwise not be visible when mapped. Federal investments represent the total funding from the federal Health Center Program to grantees with a presence in the state in 2021.

Sources | Federally-Funded Delivery Site Locations and Health Center Program Look-Alikes: data.HRSA.gov, December 2022.  
Health Center Patients and Federal Funding | 2021 Uniform Data System, Bureau of Primary Health Care, HRSA.

© National Association of Community Health Centers, 2023. For more information, please contact [federalaffairs@nachc.org](mailto:federalaffairs@nachc.org).



**21**

### NUMBER OF DELIVERY SITES IN CONGRESSIONAL DISTRICT

(main organization in bold)

#### **ADELANTE HEALTHCARE, INC.**

- Adelante Healthcare - MMU 1 | 13471 W Cornerstone Blvd Goodyear, AZ 85395-2713
- Adelante Healthcare Buckeye | 306 E Monroe Ave Buckeye, AZ 85326-2706
- Adelante Healthcare Goodyear | 13471 W Cornerstone Blvd Goodyear, AZ 85395-2713
- Adelante Healthcare Surprise | 15351 W Bell Rd Surprise, AZ 85374-3877
- Adelante Healthcare Surprise Behavioral Health | 15317 W Bell Rd STE 106 Surprise, AZ 85374-3901
- Adelante Healthcare Surprise Dental Office | 15317 W Bell Rd Ste 108 Surprise, AZ 85374-3901
- Adelante Healthcare Surprise Same Day Clinic | 15317 W Bell Rd, Ste 100 Surprise, AZ 85374-3900
- Adelante Healthcare Wickenburg | 811 N Tegner St, Ste 113 Wickenburg, AZ 85390-5410

#### **CANYONLANDS COMMUNITY HEALTH CARE**

- Canyonlands Healthcare - Beaver Dam | 3272 E Rio Virgin Rd Littlefield, AZ 86432-3200

#### **CREEK VALLEY HEALTH CLINIC**

- Creek Valley Health Clinic | 20 N Colvin St # 0418 Colorado City, AZ 86021-6155

#### **MOUNTAIN PARK HEALTH CENTER**

- Mountain Park Health Center - Goodyear | 140 N Litchfield Rd STE 200 Goodyear, AZ 85338-1226
- Mountain Park Health Center - Goodyear Suite 100 | 140 N Litchfield Rd Ste 100 Goodyear, AZ 85338-1269
- Mountain Park Health Center - Goodyear Suite 102 | 140 N Litchfield Rd STE 102 Goodyear, AZ 85338-1269
- Mountain Park Health Center - Goodyear Suite 106 | 140 N Litchfield Rd STE 106 Goodyear, AZ 85338-1226

#### **NORTH COUNTRY HEALTHCARE, INC.**

- Kingman Clinic | 1510 N Stockton Hill Rd Kingman, AZ 86401-5173
- North Country - Bullhead City | 2585 Miracle Mile STE 116 Bullhead City, AZ 86442-7562
- North Country - Kingman Integration | 3505 Western Ave, Ste B Kingman, AZ 86409-3074
- North Country - Lake Havasu City Clinic | 2090 Smoketree Ave N Lake Havasu City, AZ 86403-5806
- North Country - Mobile Unit West | 1510 N Stockton Hill Rd Kingman, AZ 86401-5173

#### **SUNSET COMMUNITY HEALTH CENTER**

- Sunset Community Health Center- Wellton | 10425 S Williams St Wellton, AZ 85356

#### **TRI-STATE COMMUNITY HEALTHCARE CENTER**

- Tri-State Community Healthcare Center- Mohave Valley | 8700 Az-95 Mohave Valley, AZ 86440