



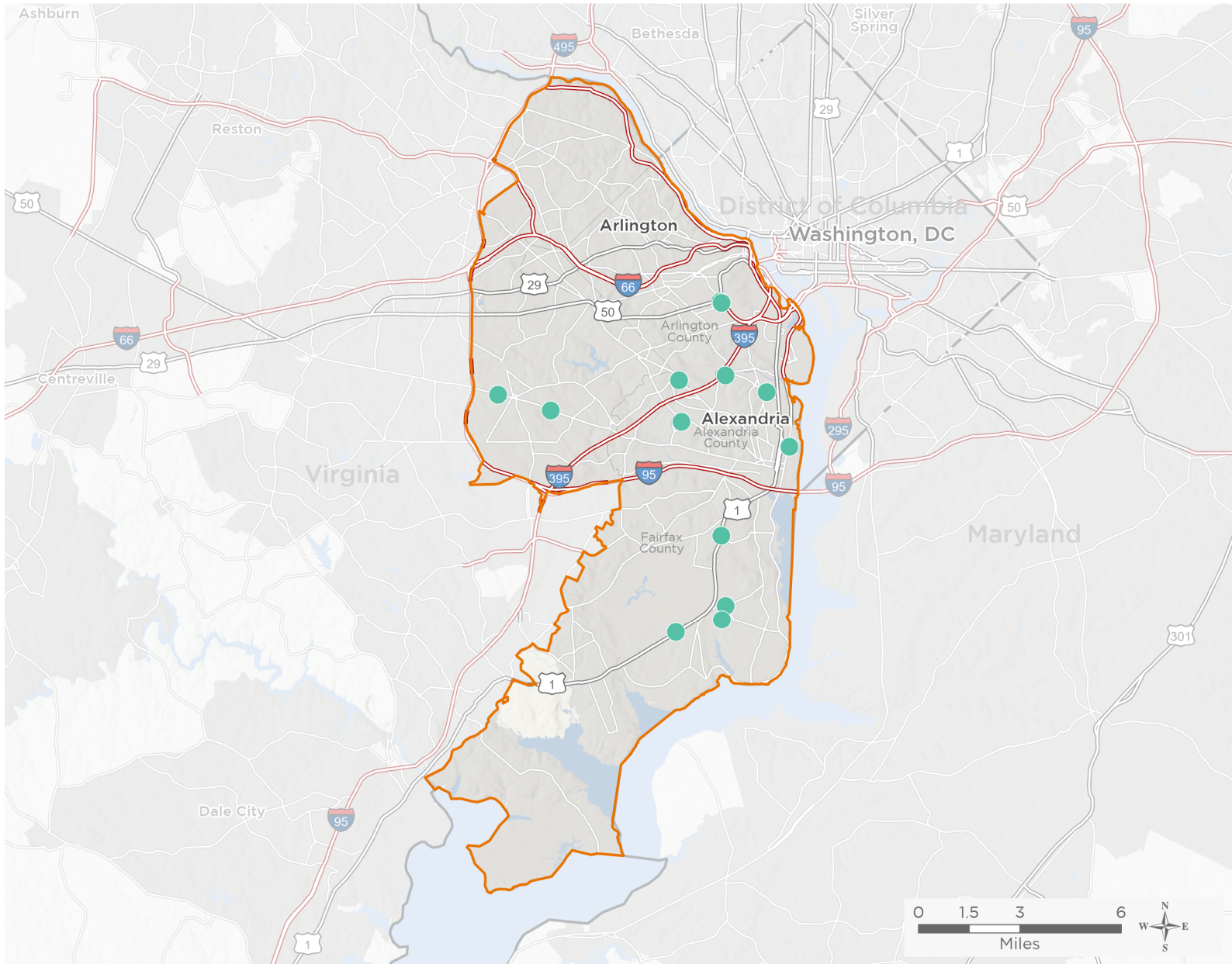
NATIONAL ASSOCIATION OF
Community Health Centers

Representative Don Beyer

118th United States Congress

Virginia's **8TH** Congressional District

The 1 federally-funded health center organizations with a presence in Virginia's 8th Congressional District leverage **\$3,845,538** in federal investments to serve **32,024** patients.



14

**NUMBER OF DELIVERY SITES
IN CONGRESSIONAL DISTRICT**

- Federally-funded Delivery Site (each color represents one organization)
- Health Center Program Look-Alikes
- 118th Congressional District Boundaries
- County Boundaries
- Interstates
- Highways
- Populated Places
- Major Roads

Notes | Delivery sites represent locations of organizations funded by the federal Health Center Program. Health Center Program Look-Alikes are community-based health care providers that meet the requirements of the HRSA Health Center Program, but do not receive Health Center Program funding. Some locations may overlap due to scale or may otherwise not be visible when mapped. Federal investments represent the total funding from the federal Health Center Program to grantees with a presence in the state in 2021.

Sources | Federally-Funded Delivery Site Locations and Health Center Program Look-Alikes: data.HRSA.gov, December 2022.
Health Center Patients and Federal Funding | 2021 Uniform Data System, Bureau of Primary Health Care, HRSA.

© National Association of Community Health Centers, 2023. For more information, please contact federalaffairs@nachc.org.



14

**NUMBER OF DELIVERY SITES IN
CONGRESSIONAL DISTRICT**

(main organization in bold)

NEIGHBORHOOD HEALTH

Neighborhood Health Arlington Dental | 2100 Washington Blvd Arlington, VA 22204-5703

Neighborhood Health at 2 East | 2 E Glebe Rd Alexandria, VA 22305-2938

Neighborhood Health at Alexandria CSB | 720 N Saint Asaph St Alexandria, VA 22314-1912

Neighborhood Health at Annandale Dental | 7501 Little River Tpke STE G4 Annandale, VA 22003-2923

Neighborhood Health at Annandale Medical | 6715 Little River Tpke STE 201 Annandale, VA 22003-3546

Neighborhood Health at Arlington CSB | 2120 Washington Blvd Arlington, VA 22204-5718

Neighborhood Health at Martha Custis Drive | 1225 Martha Custis Dr, Ste C1 Alexandria, VA 22302-2040

Neighborhood Health at Richmond Highway | 6677 Richmond Hwy Alexandria, VA 22306-6647

Neighborhood Health at Sherwood Hall Lane | 2616 Sherwood Hall Ln STE 106 Alexandria, VA 22306-3154

Neighborhood Health at South County Center | 8350 Richmond Hwy STE 301 Alexandria, VA 22309-2344

Neighborhood Health at the Casey Clinic | 1200 N Howard St Alexandria, VA 22304-1634

Neighborhood Health at the Gartlan Mental Health Center | 8119 Holland Rd Alexandria, VA 22306-3135

Neighborhood Health at the WOW Bus | 2 E Glebe Rd Alexandria, VA 22305-2938

Neighborhood Health King Street Dental | 4480 King St Alexandria, VA 22302-1339