



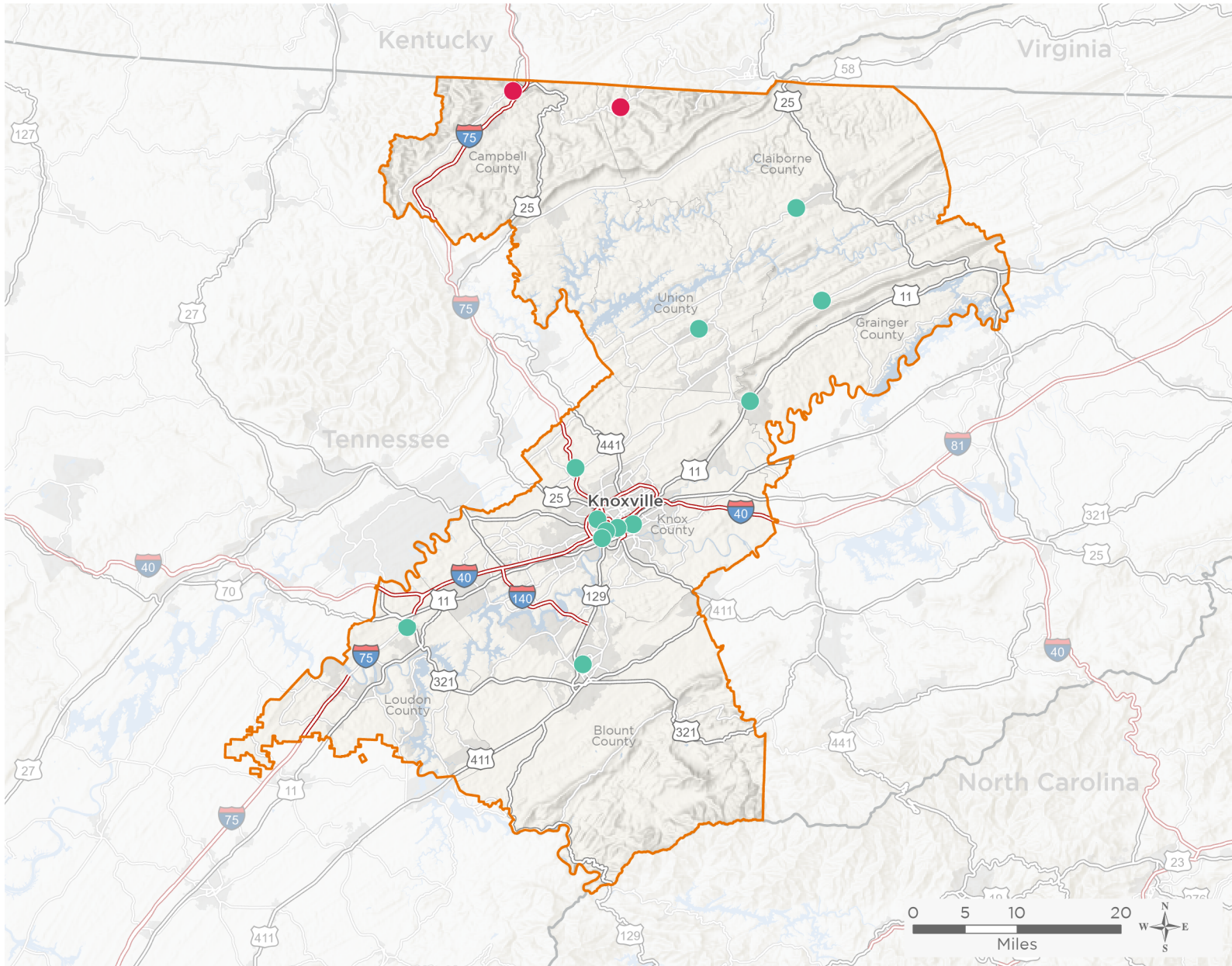
NATIONAL ASSOCIATION OF
Community Health Centers

Representative Tim Burchett

118th United States Congress

Tennessee's **2ND** Congressional District

The 2 federally-funded health center organizations with a presence in Tennessee's 2nd Congressional District leverage **\$11,284,626** in federal investments to serve **80,773** patients.



15

**NUMBER OF DELIVERY SITES
IN CONGRESSIONAL DISTRICT**

- Federally-funded Delivery Site (each color represents one organization)
- ▲ Health Center Program Look-Alikes
- 118th Congressional District Boundaries
- County Boundaries
- Populated Places
- Interstates
- Highways
- Major Roads

Notes | Delivery sites represent locations of organizations funded by the federal Health Center Program. Health Center Program Look-Alikes are community-based health care providers that meet the requirements of the HRSA Health Center Program, but do not receive Health Center Program funding. Some locations may overlap due to scale or may otherwise not be visible when mapped. Federal investments represent the total funding from the federal Health Center Program to grantees with a presence in the state in 2021.

Sources | Federally-Funded Delivery Site Locations and Health Center Program Look-Alikes: data.HRSA.gov, December 2022. Health Center Patients and Federal Funding | 2021 Uniform Data System, Bureau of Primary Health Care, HRSA.



15

**NUMBER OF DELIVERY SITES IN
CONGRESSIONAL DISTRICT**

(main organization in bold)

CHEROKEE HEALTH SYSTEMS

Blaine Health Center | 880 Rutledge Pike Blaine, TN 37709-2317

Center City Health Center | 2018 Western Ave Knoxville, TN 37921-5718

Cherokee Health Systems - East Knox | 2202 Martin Luther King Jr Ave Knoxville, TN 37915-1570

Cherokee Health Systems Knox Homeless Health Center | 538 W 5th Ave Knoxville, TN 37917-7109

Cherokee Hlth Systems - Maynardv | 4330 Maynardville Hwy Maynardville, TN 37807-3618

CHS Blount County | 255 E Watt St Alcoa, TN 37701-2236

CHS Cherokee Mills | 2240 Sutherland Ave STE 103 Knoxville, TN 37919-2333

CHS Claiborne County Health Center | 1596 Highway 33 S New Tazewell, TN 37825-7104

CHS Clairfield | 5619 Highway 90 Clairfield, TN 37715-3632

CHS Lonsdale | 1754 Texas Ave Knoxville, TN 37921-2513

CHS Loudon County | 501 Adesa Blvd Lenoir City, TN 37771-6725

North Knox Health Center | 7714 Conner Rd STE 105 Powell, TN 37849-3559

Washburn Clinic | 7719 Highway 131 Washburn, TN 37888-4055

DAYSPRING HEALTH, INC.

Dayspring Clairfield | 5663 Highway 90 Clairfield, TN 37715-3632

Dayspring Jellico | 550 Sunset Trl Jellico, TN 37762-2343