



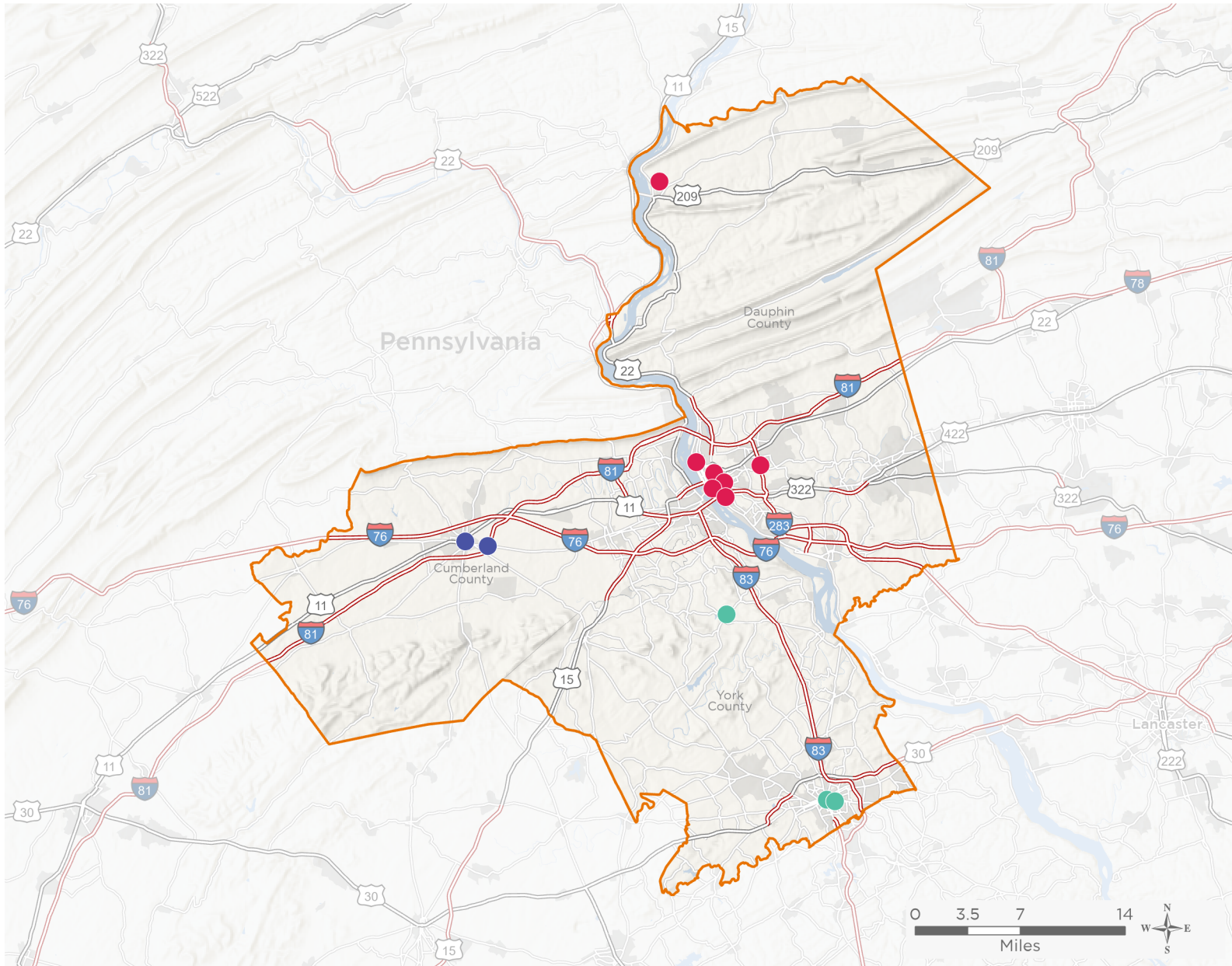
NATIONAL ASSOCIATION OF
Community Health Centers

Representative Scott Perry

118th United States Congress

Pennsylvania's **10TH** Congressional District

The 3 federally-funded health center organizations with a presence in Pennsylvania's 10th Congressional District leverage **\$8,499,296** in federal investments to serve **62,800** patients.



- ● ● Federally-funded Delivery Site (each color represents one organization)
- ▲ Health Center Program Look-Alikes
- 118th Congressional District Boundaries
- County Boundaries
- Populated Places
- Interstates
- Highways
- Major Roads

13

**NUMBER OF DELIVERY SITES
IN CONGRESSIONAL DISTRICT**

Notes | Delivery sites represent locations of organizations funded by the federal Health Center Program. Health Center Program Look-Alikes are community-based health care providers that meet the requirements of the HRSA Health Center Program, but do not receive Health Center Program funding. Some locations may overlap due to scale or may otherwise not be visible when mapped. Federal investments represent the total funding from the federal Health Center Program to grantees with a presence in the state in 2021.

Sources | Federally-Funded Delivery Site Locations and Health Center Program Look-Alikes: data.HRSA.gov, December 2022.
Health Center Patients and Federal Funding | 2021 Uniform Data System, Bureau of Primary Health Care, HRSA.

© National Association of Community Health Centers, 2023. For more information, please contact federalaffairs@nachc.org.



13

**NUMBER OF DELIVERY SITES IN
CONGRESSIONAL DISTRICT**

(main organization in bold)

FAMILY FIRST HEALTH CORPORATION

Family First Health Corporation | 116 S George St York, PA 17401-1474

Hannah Penn Center | 415 E Boundary Ave York, PA 17403-2811

Lewisberry Center | 308 Market St Lewisberry, PA 17339-9257

HAMILTON HEALTH CENTER, INC.

Familycare at Union Deposit | 895 S Arlington Ave Harrisburg, PA 17109-5004

Hamilton Family Care at Millersburg | 1000 Evelyn Dr Millersburg, PA 17061-1258

HHC- South Allison Hill | 110 S 17th St Harrisburg, PA 17104-1123

HHC-Downey School | 1313 Monroe St Harrisburg, PA 17103-1139

HHC-Foose School | 1301 Sycamore St Harrisburg, PA 17104-3410

Temporary Site - St. Paul's | 2447 Green St Harrisburg, PA 17110-1114

Temporary Site - B'nai Birth Apts. | 130 S 3rd St # 1 Harrisburg, PA 17101-2602

Union Deposit Family Practice | 891 S Arlington Ave Harrisburg, PA 17109-5004

SADLER HEALTH CENTER CORPORATION

Mobile Van | 1910 W Trindle Rd Carlisle, PA 17013-2614

Sadler Health Center Corporation | 100 N Hanover St Carlisle, PA 17013-2421