



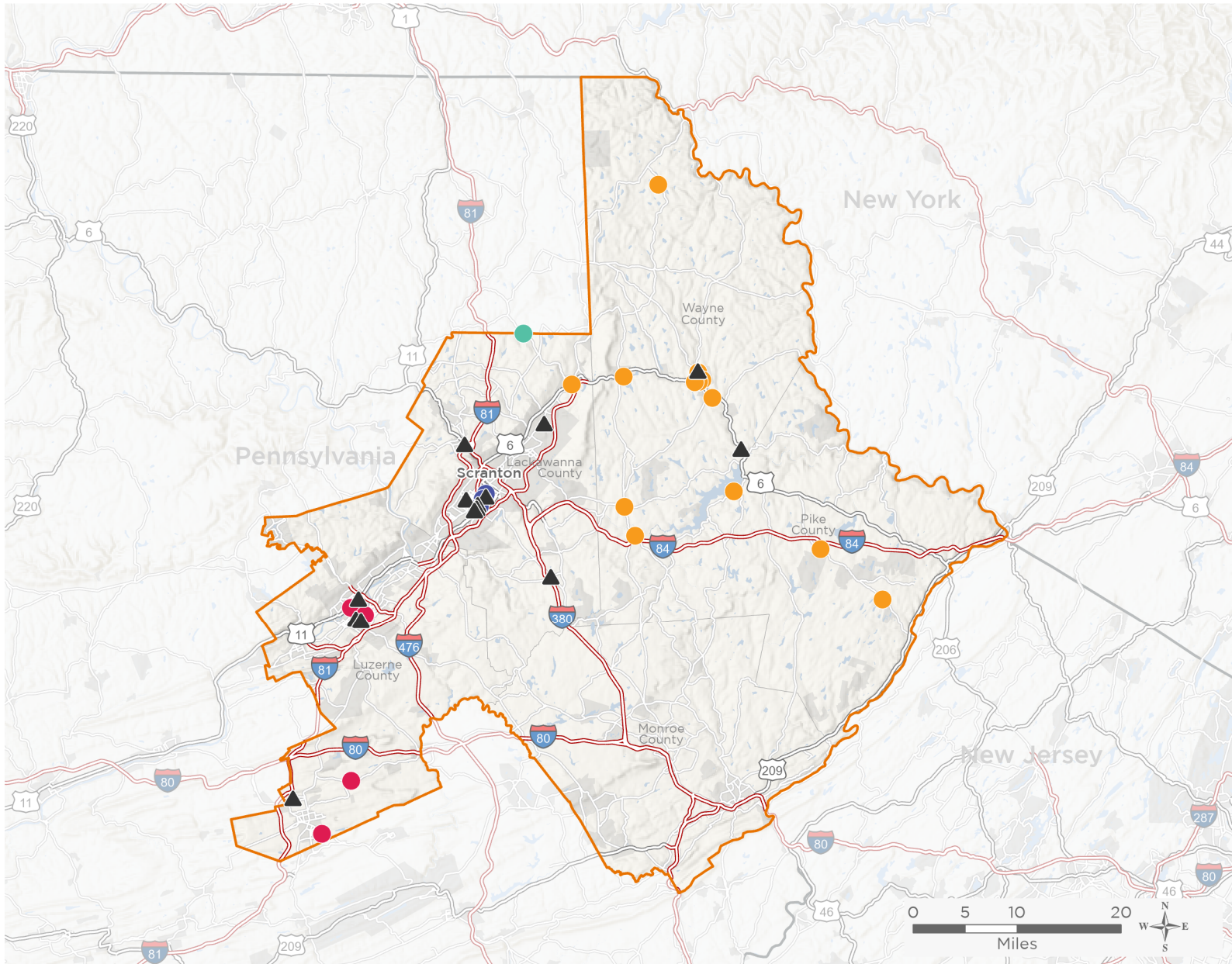
NATIONAL ASSOCIATION OF
Community Health Centers

Representative Matt Cartwright

118th United States Congress

Pennsylvania's **8TH** Congressional District

The 4 federally-funded health center organizations with a presence in Pennsylvania's 8th Congressional District leverage **\$9,203,567** in federal investments to serve **84,369** patients.



27

**NUMBER OF DELIVERY SITES
IN CONGRESSIONAL DISTRICT**

- ● ● ● Federally-funded Delivery Site (each color represents one organization)
- ▲ Health Center Program Look-Alikes
- ▭ 118th Congressional District Boundaries
- ▭ County Boundaries
- ▭ Populated Places
- ▭ Interstates
- ▭ Highways
- ▭ Major Roads

Notes | Delivery sites represent locations of organizations funded by the federal Health Center Program. Health Center Program Look-Alikes are community-based health care providers that meet the requirements of the HRSA Health Center Program, but do not receive Health Center Program funding. Some locations may overlap due to scale or may otherwise not be visible when mapped. Federal investments represent the total funding from the federal Health Center Program to grantees with a presence in the state in 2021.

Sources | Federally-Funded Delivery Site Locations and Health Center Program Look-Alikes: data.HRSA.gov, December 2022.
Health Center Patients and Federal Funding | 2021 Uniform Data System, Bureau of Primary Health Care, HRSA.

© National Association of Community Health Centers, 2023. For more information, please contact federalaffairs@nachc.org.



27

NUMBER OF DELIVERY SITES IN CONGRESSIONAL DISTRICT

(main organization in bold)

B-K HEALTH CENTER, INC.

Andrew C. Mazza Memorial Health Center | 127 Route 106 Greenfield Township, PA 18407-3526

RURAL HEALTH CORPORATION OF NORTHEASTERN PENNSYLVANIA

Freeland Health Center | 404 Ridge St Freeland, PA 18224-1802

Hazleton Pediatrics | 1730 E Broad St Hazleton, PA 18201-5657

Mckinney Clinic | 39 E Jackson St Wilkes Barre, PA 18701-2709

Valley Medical | 75 S Wyoming Ave Kingston, PA 18704-3103

SCRANTON PRIMARY HEALTH CARE CENTER, INC.

Alder Street | 425 Alder St Scranton, PA 18505-4116

Lackawanna College | 406 N Washington Ave Scranton, PA 18503-1306

Scranton Primary Health Care Center, Inc. | 959 Wyoming Ave Scranton, PA 18509-3023

WAYNE MEMORIAL COMMUNITY HEALTH CENTERS

Carbondale Family Health Center | 141 Salem Ave STE 302 Carbondale, PA 18407-2500

Hamlin Family Health Center | 543 Easton Tpke Lake Ariel, PA 18436-4718

Highland Physicians Family Health Center | 1839 Fair Ave Honesdale, PA 18431-2121

Honesdale Behavioral Health | 600 Maple Ave, Ste 15 Honesdale, PA 18431-1460

Honesdale Family Health Center | 600 Maple Ave STE 2 Honesdale, PA 18431-1436

Honesdale Pediatric Center | 1837 Fair Ave Honesdale, PA 18431-2121

Lake Region Urgent Care | 273 Grandview Ave Honesdale, PA 18431-1163

Northern Wayne Family Health Center | 412 Como Rd Lake Como, PA 18437-1020

Pike County Dental Center | 750 Route 739 Hawley, PA 18428-6058

Pike Family Health Center | 750 Route 739 Hawley, PA 18428-6058

Pinnacle Family Health Center | 132 Manly Rd Tafton, PA 18464-7829

Sterling Pediatric Center | 62 Industrial Park Rd Lake Ariel, PA 18436-5606

Temporary Site - Wayne Memorial Health Ctr Monoclonal Antibody therapy Clinic | 600 Maple Ave STE 4 Honesdale, PA 18431-1436

Together For Health Dental Center | 600 Maple Ave STE 7 Honesdale, PA 18431-1460

Waymart Family Health Center | 29 Woodlands Dr Waymart, PA 18472-9366

Waymart Pediatric Center | 27B Woodlands Dr Waymart, PA 18472-9366

Women's Health Center | 110 Park St Honesdale, PA 18431-2023

Women's Health Center | 626 Park St Honesdale, PA 18431-1446

Women's Health of Pike County | 1592 Route 739 STE 2 Dingmans Ferry, PA 18328-3513



27

NUMBER OF DELIVERY SITES IN CONGRESSIONAL DISTRICT

(main organization in bold)

▲ HEALTH CENTER PROGRAM LOOK-ALIKES

Health Center Program Look-Alikes are community-based health care providers that meet the requirements of the HRSA Health Center Program, but do not receive Health Center Program funding.

CARING COMMUNITY HEALTH CENTER

Caring Community Health Center - Hazleton | 426 Airport Rd Hazleton, PA 18202-3361

Caring Community Health Center - Kistler Clinic | 175 S Wilkes Barre Blvd Wilkes Barre, PA 18702-5040

WRIGHT CENTER MEDICAL GROUP, THE

The Wright Ctr for Community Health at Children's Service Ctr Practice | 335 S Franklin St Wilkes Barre, PA 18702-3808

The Wright Center for Community Health Clarks Summit Practice | 1145 Northern Blvd Clarks Summit, PA 18411-2221

The Wright Center for Community Health Driving Better Health | 5 S Washington Ave Jermyn, PA 18433-1121

The Wright Center for Community Health Hawley Practice | 103 Spruce St Hawley, PA 18428-1149

The Wright Center for Community Health Kingston Practice | 2 Sharpe St Kingston, PA 18704-3714

The Wright Center for Community Health Mid Valley Practice | 5 S Washington Ave Jermyn, PA 18433-1121

The Wright Ctr for Community Health North Pocono Practice | 260 Daleville Hwy STE 103 Covington Township, PA 18444

The Wright Center for Community Health Northeast Scranton Intermediate Sch | 721 Adams Ave Scranton, PA 18510

The Wright Center for Community Health School Based Practice | 1401 Fellows St Scranton, PA 18504-2222

The Wright Center for Community Health Scranton Counseling Practice | 329 Cherry St Ste 1B Scranton, PA 18505

The Wright Center for Community Health Scranton Practice | 501 S Washington Ave Scranton, PA 18505-3814

The Wright Center for Community Health South Scranton Intermediate School | 355 Maple St Scranton, PA 18505

The Wright Center for Community Health Wayne Practice | 1855 Fair Ave Honesdale, PA 18431-2121