



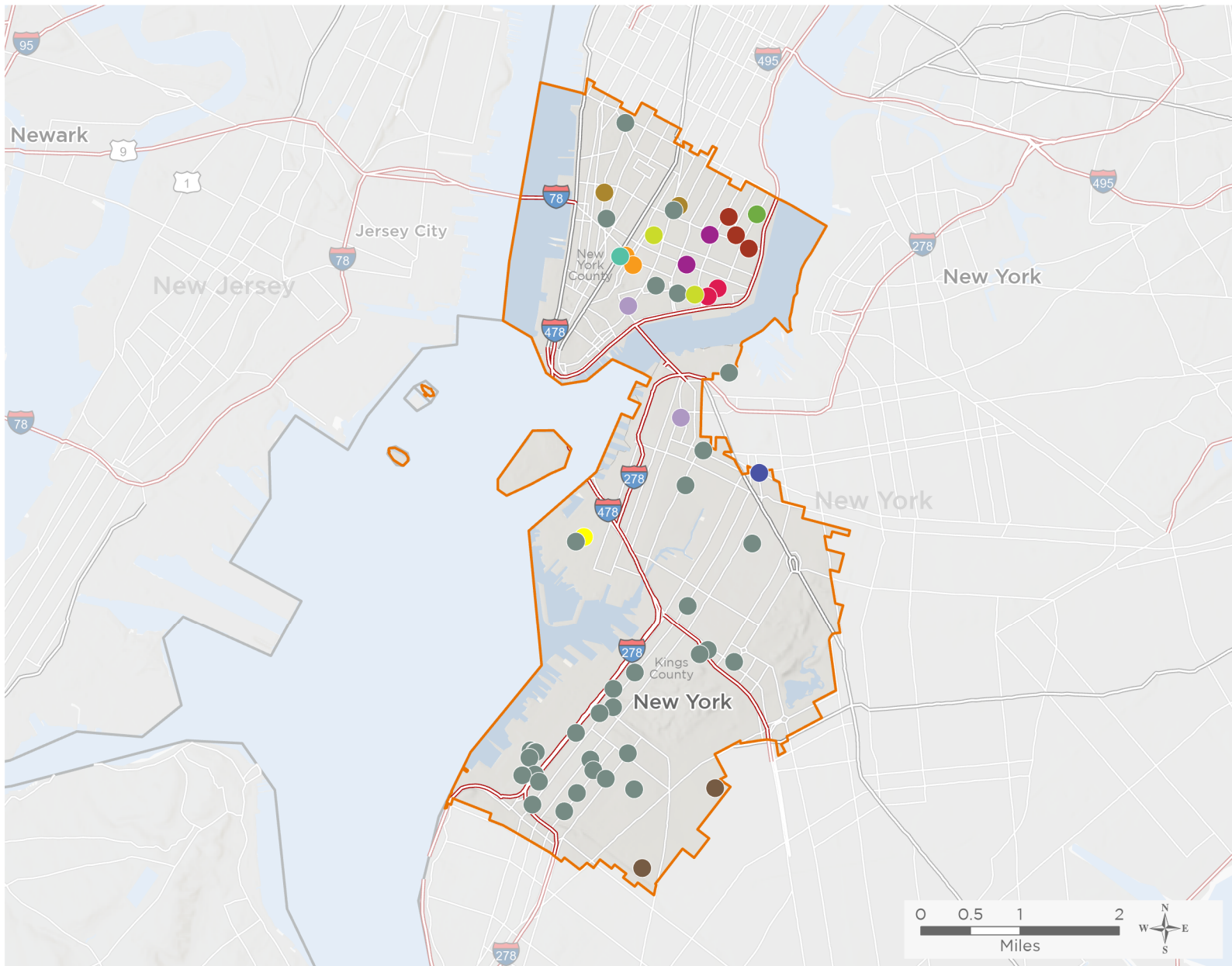
NATIONAL ASSOCIATION OF
Community Health Centers

Representative Dan Goldman

118th United States Congress

New York's **10TH** Congressional District

The 13 federally-funded health center organizations with a presence in New York's 10th Congressional District leverage **\$66,536,236** in federal investments to serve **612,500** patients.



60

**NUMBER OF DELIVERY SITES
IN CONGRESSIONAL DISTRICT**

- Federally-funded Delivery Site (each color represents one organization)
- Health Center Program Look-Alikes
- 118th Congressional District Boundaries
- County Boundaries
- Populated Places
- Interstates
- Highways
- Major Roads

Notes | Delivery sites represent locations of organizations funded by the federal Health Center Program. Health Center Program Look-Alikes are community-based health care providers that meet the requirements of the HRSA Health Center Program, but do not receive Health Center Program funding. Some locations may overlap due to scale or may otherwise not be visible when mapped. Domestic violence shelters are excluded from the map and delivery site statistics. Federal investments represent the total funding from the federal Health Center Program to grantees with a presence in the state in 2021.

Sources | Federally-Funded Delivery Site Locations and Health Center Program Look-Alikes: data.HRSA.gov, December 2022.
Health Center Patients and Federal Funding | 2021 Uniform Data System, Bureau of Primary Health Care, HRSA.

© National Association of Community Health Centers, 2023. For more information, please contact federalaffairs@nachc.org.



60

NUMBER OF DELIVERY SITES IN CONGRESSIONAL DISTRICT

(main organization in bold)

- APICHA COMMUNITY HEALTH CENTER**
Apicha Community Health Center | 400 Broadway New York, NY 10013
- BETANCES HEALTH CENTER**
Betances Health Center | 280 Henry St New York, NY 10002-5808
Betances Health Center at Henry Street Settlement | 40 Montgomery St New York, NY 10002-4808
- BROOKLYN PLAZA MEDICAL CENTER**
Brooklyn Plaza Medical Center, Inc. | 650 Fulton St Brooklyn, NY 11217-1517
- CHARLES B. WANG COMMUNITY HEALTH CENTER, INC.**
Charles B. Wang Community Health Center, Inc. | 268 Canal St New York, NY 10013-3599
Charles B. Wang Community Health Center, Inc. | 125 Walker St New York, NY 10013-4135
- COMMUNITY HEALTHCARE NETWORK, INC.**
Lower East Side Health Center | 255 E Houston St New York, NY 10002-1013
The Seward Park School-based Health Center | 350 Grand St New York, NY 10002-4629
- HOUSING WORKS HEALTH SERVICES III, INC.**
Cylar House Community Health Center | 743 E 9th St New York, NY 10009-5335
- INSTITUTE FOR URBAN FAMILY HEALTH**
Cadman Family Health Center | 300 Cadman Plz W Brooklyn, NY 11201-3229
Murry Bergtraum High School Campus School-based Health Center | 411 Pearl St New York, NY 10038-1432
- L'REFUAH MEDICAL & REHAB CENTER INC**
Ezra dental van -- #2 | 1312 38th St Brooklyn, NY 11218-3612
Ezra Medical Center | 1312 38th St Brooklyn, NY 11218-3612
Ezra Medical Women's and Family Health Center | 1260 60th St # 78 Brooklyn, NY 11219-4976
Ezra Mobile Dental Van #1 | 1312 38th St Brooklyn, NY 11218-3612
- NEW YORK CITY HEALTH AND HOSPITALS CORPORATION**
Gouverneur Diagnostic & Treatment Center | 227 Madison St New York, NY 10002
Judson Health Center | 34 Spring St New York, NY 10012-4107
- PROJECT RENEWAL, INC.**
CareVan | 8 E 3rd St New York, NY 10003-8908
LifeLine Van | 8 E 3rd St New York, NY 10003-8908
MedVan 2 | 8 E 3rd St New York, NY 10003-8908
ScanVan, mobile van | 200 Varick St New York, NY 10014-4810
Third Street Primary Care Clinic | 8 E 3rd St New York, NY 10003-8908



60

NUMBER OF DELIVERY SITES IN CONGRESSIONAL DISTRICT

(main organization in bold)

SUNSET PARK HEALTH COUNCIL, INC.

- Callen-Lorde at the Center | 208 W 13th St New York, NY 10011-7702
- Care Management | 5421 2nd Ave Brooklyn, NY 11220-2605
- Dewey MS 136 School-Based Health Center | 4004 4th Ave Brooklyn, NY 11232-3402
- Family Physician Family Health Center at NYU Langone | 5616 6th Ave Brooklyn, NY 11220-3419
- Family Support Center | 6025 6th Ave Brooklyn, NY 11220-4004
- LFHC Community Medicine Program at Bowery Residents Committee | 317 Bowery New York, NY 10003-7105
- Lutheran Augustana Center | 5434 2nd Ave Brooklyn, NY 11220-2606
- Metro Community Health Centers – Downtown Brooklyn | 177 Livingston St UNIT LI Brooklyn, NY 11201-7000
- MS 88 School-Based Health Center | 544 7th Ave Brooklyn, NY 11215-6140
- Occupational Health Services | 5800 3rd Ave Brooklyn, NY 11220-3702
- Park Ridge Family Health Center at NYU Langone | 6317 4th Ave Brooklyn, NY 11220-4922
- Park Slope Family Health Center at NYU Langone | 220 13rd St Brooklyn, NY 11215-4802
- Pershing JHS 220 School-Based Health Center | 4812 9th Ave Brooklyn, NY 11220-2418
- PS 002 | 122 Henry St New York, NY 10002-7125
- PS 1 School-Based Health Center | 309 47th St Brooklyn, NY 11220-1111
- PS 10 School-Based Health Center | 511 7th Ave Brooklyn, NY 11215-6126
- PS 124 School Based Health Center | 40 Division St New York, NY 10002-6709
- PS 15 School-Based Health Center | 71 Sullivan St Brooklyn, NY 11231-1600
- PS 169 School-Based Health Center | 4305 7th Ave Brooklyn, NY 11232-3954
- PS 172 School-Based Health Center | 825 4th Ave Brooklyn, NY 11232-1701
- PS 24 School-Based Health Center | 427 38th St Brooklyn, NY 11232-2514
- PS 282 School-Based Health Center | 180 6th Ave Brooklyn, NY 11217-3507
- PS 307 School-Based Health Center | 209 York St Brooklyn, NY 11201-1509
- PS 503/506 School-Based Health Center | 330 59th St Brooklyn, NY 11220-3718
- PS 94 School-Based Health Center | 5010 6th Ave Brooklyn, NY 11220-2008
- Rusk Rehabilitation at 60th Street | 230 60th St Brooklyn, NY 11220-3712
- Seventh Avenue Family Health Center at NYU Langone | 5008 7th Ave Brooklyn, NY 11220-2167
- Sunset Park Family Health Center at NYU Langone | 150 55th St Brooklyn, NY 11220-2559
- Sunset Park High School | 153 35th St Brooklyn, NY 11232-2307
- Sunset Terrace Family Health Center at NYU Langone | 514 49th St Brooklyn, NY 11220-2010
- The Door – A Center of Alternatives, Inc. | 555 Broome St New York, NY 10013-1510
- Warren Street Center for Children and Families | 343 Warren St Brooklyn, NY 11201-6412
- Windsor Terrace Senior Center | 245 Prospect Park W Brooklyn, NY 11215-5807
- Women Infants Children Family Health Center at NYU Langone | 5610 2nd Ave Brooklyn, NY 11220-3599

THE ADDABBO JOSEPH P FAMILY HEALTH CENTER INC

- Joseph P. Addabbo Family Health Center at Richards Street | 120 Richards St Brooklyn, NY 11231-1635



NATIONAL ASSOCIATION OF
Community Health Centers

Representative Dan Goldman

118th United States Congress

New York's **10TH** Congressional District

60

NUMBER OF DELIVERY SITES IN CONGRESSIONAL DISTRICT

(main organization in bold)

● **WILLIAM F. RYAN COMMUNITY HEALTH CENTER, INC.**

PS 188: The Island School | 442 E Houston St New York, NY 10002-1122

PS 64: The Earth School | 600 E 6th St New York, NY 10009-6851

Ryan Health | NENA | 279 E 3rd St New York, NY 10009-7813