



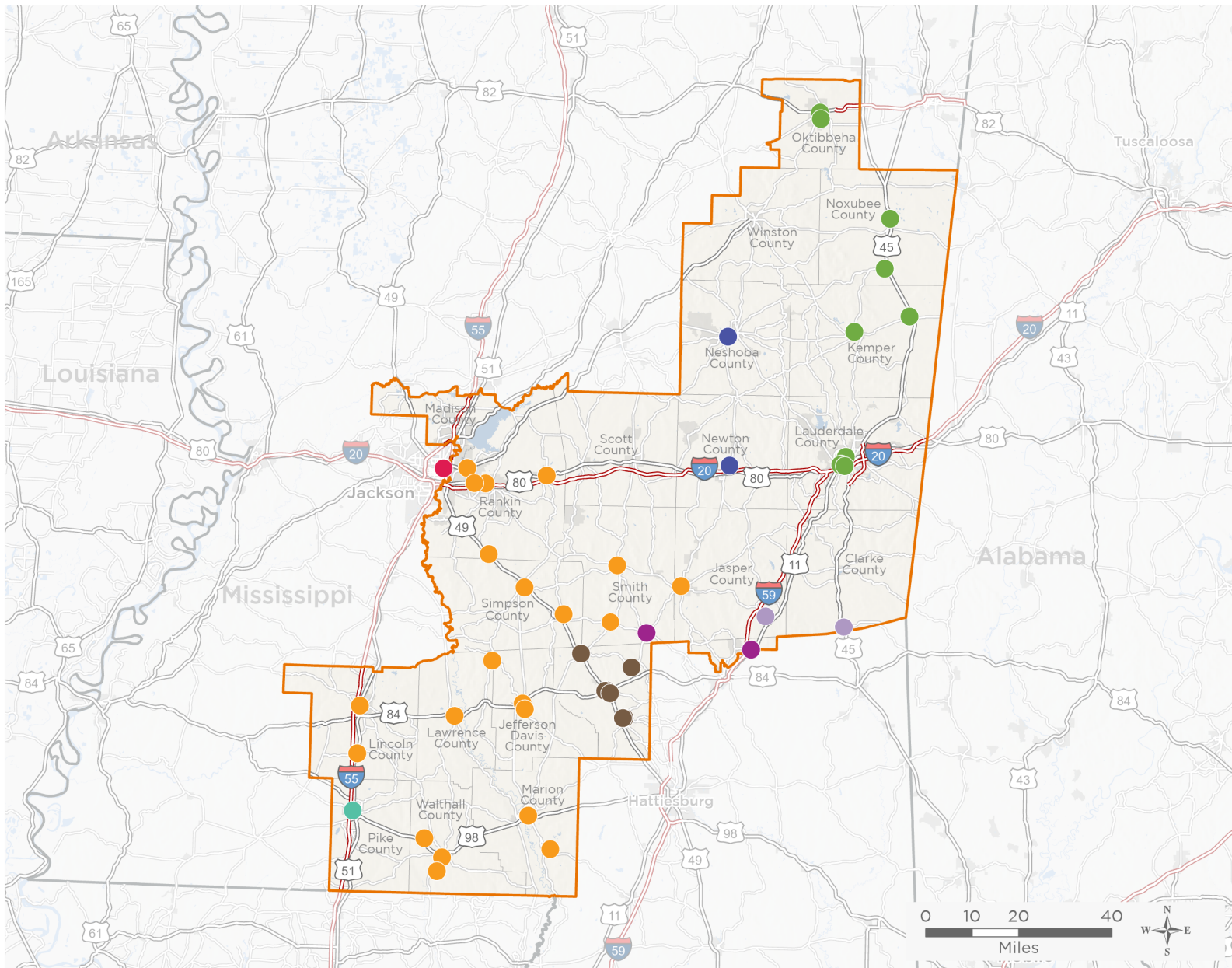
NATIONAL ASSOCIATION OF  
Community Health Centers

# Representative Michael Guest

## 118th United States Congress

Mississippi's **3<sup>RD</sup>** Congressional District

The 8 federally-funded health center organizations with a presence in Mississippi's 3rd Congressional District leverage **\$38,601,707** in federal investments to serve **165,993** patients.



**55**

**NUMBER OF DELIVERY SITES  
IN CONGRESSIONAL DISTRICT**

- Federally-funded Delivery Site (each color represents one organization)
- Health Center Program Look-Alikes
- ▭ 118th Congressional District Boundaries
- ▭ County Boundaries
- ▬ Interstates
- ▬ Highways
- ▭ Populated Places
- ▬ Major Roads

Notes | Delivery sites represent locations of organizations funded by the federal Health Center Program. Health Center Program Look-Alikes are community-based health care providers that meet the requirements of the HRSA Health Center Program, but do not receive Health Center Program funding. Some locations may overlap due to scale or may otherwise not be visible when mapped. Federal investments represent the total funding from the federal Health Center Program to grantees with a presence in the state in 2021.

Sources | Federally-Funded Delivery Site Locations and Health Center Program Look-Alikes: data.HRSA.gov, December 2022.  
Health Center Patients and Federal Funding | 2021 Uniform Data System, Bureau of Primary Health Care, HRSA.

© National Association of Community Health Centers, 2023. For more information, please contact [federalaffairs@nachc.org](mailto:federalaffairs@nachc.org).



**55**

### NUMBER OF DELIVERY SITES IN CONGRESSIONAL DISTRICT

(main organization in bold)

- **AMITE COUNTY MEDICAL SERVICES, INC.**  
Pike County Medical Services | 300 Rawls Dr STE 1300 McComb, MS 39648-2866
- **CENTRAL MISSISSIPPI CIVIC IMPROVEMENT ASSOCIATION, INC.**  
Jackson-Hinds Comprehensive Health Ctr Woodrow Wilson Clinic | 514 E Woodrow Wilson Ave Jackson, MS 39216
- **EAST CENTRAL MISSISSIPPI HEALTH CARE INC**  
Newton Health Care | 9431 Eastside Drive Ext Newton, MS 39345-8072  
Philadelphia Health Center | 10330 Road 375 Philadelphia, MS 39350-3249
- **FAMILY HEALTH CARE CLINIC, INC.**  
Family Health Care Clinic, Bogue Chitto--Head Start | 2506 Highway 51 SE Bogue Chitto, MS 39629-5183  
Family Health Care Clinic, Brookhaven | 215 Highway 51 S Brookhaven, MS 39601-3245  
Family Health Care Clinic, Columbia--Head Start | 431 Old Highway 13 S Columbia, MS 39429-8364  
Family Health Care Clinic, Inc.--Pelahatchie | 100 N Brooks St Pelahatchie, MS 39145  
Family Health Care Clinic, Inc.- - Flowood | 1307 Airport Rd N Flowood, MS 39232-8897  
Family Health Care Clinic, Inc. --Brandon | 1551 W Government St Brandon, MS 39042-2408  
Family Health Care Clinic, Inc. --MENDENHALL | 401 Main St N Mendenhall, MS 39114-3303  
Family Health Care Clinic, Inc. --MONTICELLO | 430 W Broad St Monticello, MS 39654-7723  
Family Health Care Clinic, Inc. --PEARL | 4635 Highway 80 E Pearl, MS 39208-4226  
Family Health Care Clinic, Inc. --Raleigh | 226 Whiteoak Ave Raleigh, MS 39153-6082  
Family Health Care Clinic, Inc. --Tylertown | 113 Enochs St Tylertown, MS 39667-2711  
Family Health Care Clinic, Inc. -Mobile unit1 | 4635 Highway 80 E Pearl, MS 39208-4226  
Family Health Care Clinic, Inc. -Mobile unit2 | 4635 Highway 80 E Pearl, MS 39208-4226  
Family Health Care Clinic, Inc. -Mobile unit3 | 4635 Highway 80 E Pearl, MS 39208-4226  
Family Health Care Clinic, Inc., --Columbia | 628 Main St Columbia, MS 39429-2936  
Family Health Care Clinic, Inc., --New Hebron | 202 Jefferson St Newhebron, MS 39140-3809  
Family Health Care Clinic, Inc., --Prentiss | 910 Second St Prentiss, MS 39474-9117  
Family Health Care Clinic, Magee--Head Start | 820 Johnson Lockhart Dr NE Magee, MS 39111-3242  
Family Health Care Clinic, Mize--School | 125 School Rd Mize, MS 39116-5637  
Family Health Care Clinic, Piney Woods--School | 5096 Highway 49 S Braxton, MS 39044  
Family Health Care Clinic, Prentiss-Head Start | 150 J E Johnson Rd Prentiss, MS 39474-3101  
Family Health Care Clinic, Tylertown--Head Start | 225 Saint Paul Rd Tylertown, MS 39667-6163  
Family Health Care Clinic, Tylertown--Head Start | 130 E Lexie Rd Tylertown, MS 39667-5604  
Family Health Care Clinic,Bay Springs--Head Start | 298 Highway 18 Bay Springs, MS 39422-5106
- **FAMILY HEALTH CENTER INC**  
Family Health Center Taylorsville | 531 Highway 28 E Taylorsville, MS 39168-5635  
Sandersville Health Center | 203 Broad St Laurel, MS 39443



55

**NUMBER OF DELIVERY SITES IN  
CONGRESSIONAL DISTRICT**

(main organization in bold)

**GREATER MERIDIAN HEALTH CLINIC, INC**

GMHC Mobile Access Unit | 2701 Davis St Meridian, MS 39301-5708

GMHC Mobile Access Unit 2 | 2701 Davis St Meridian, MS 39301-5708

GMHC, INC. / MPSD Carver MS Community School Based Clinic | 900 44th Ave Meridian, MS 39307-5913

GMHC, INC. / MPSD Meridian HS Community School Based Clinic | 2320 32nd St Meridian, MS 39305-4657

GMHC, INC. / MPSD West End/TJ Harris Community School Based Clinic | 4000 10th St BLDG A Meridian, MS 39307

Greater Meridian Health Clinic, Inc. | 2701 Davis St Meridian, MS 39301-5708

Kemper Family Medical Center | 201 Birch St De Kalb, MS 39328-8017

Oktibbeha Family Medical Center | 105 Felix Long St Starkville, MS 39759-8608

Oktibbeha Family Medical Center | 511 Academy Rd Starkville, MS 39759-4021

Scooba Family Medical Center | 927 Kemper St Scooba, MS 39358-7478

Shuqualak-Noxubee Health Center | 167 Millers Chapel Church Rd Macon, MS 39341

Shuqualak-Noxubee Health Center | 17 Mulberry St Shuqualak, MS 39361-9128

SHUQUALAK/NOXUBEE HEALTH CENTER (Temporary Site) | 17 Mulberry St Shuqualak, MS 39361-9128

**OUTREACH HEALTH SERVICES INC**

Jasper Medical/Dental Clinic | 309 N Pine Ave Heidelberg, MS 39439-3412

Outreach Health Services Inc. Medical/Dental Mobile Unit | 130 S High St Shubuta, MS 39360-9500

Shubuta Medical/Dental Clinic | 130 S High St Shubuta, MS 39360-9500

**SOUTHEAST MISSISSIPPI RURAL HEALTH INITIATIVE, INC.**

Carver Middle School | 104 Carver Dr Collins, MS 39428-4174

Collins Elementary School | 401 Dogwood Ave Collins, MS 39428

Collins High School | 1208 S Dogwood Ave Collins, MS 39428-4665

Hopewell Elementary School | 824 Hopewell Rd Collins, MS 39428-5736

Mt. Olive Attendance Center | S 4th St Mount Olive, MS 39119

Seminary Elementary School | 200 W Main St Seminary, MS 39479-9031

Seminary Family Health Center | 100 Highway 535 Seminary, MS 39479-8809

Seminary High School | 200 W Main St Bldg 3 Seminary, MS 39479-9031

Seminary Middle School | 200 W Main St Bldg 2 Seminary, MS 39479-9031