



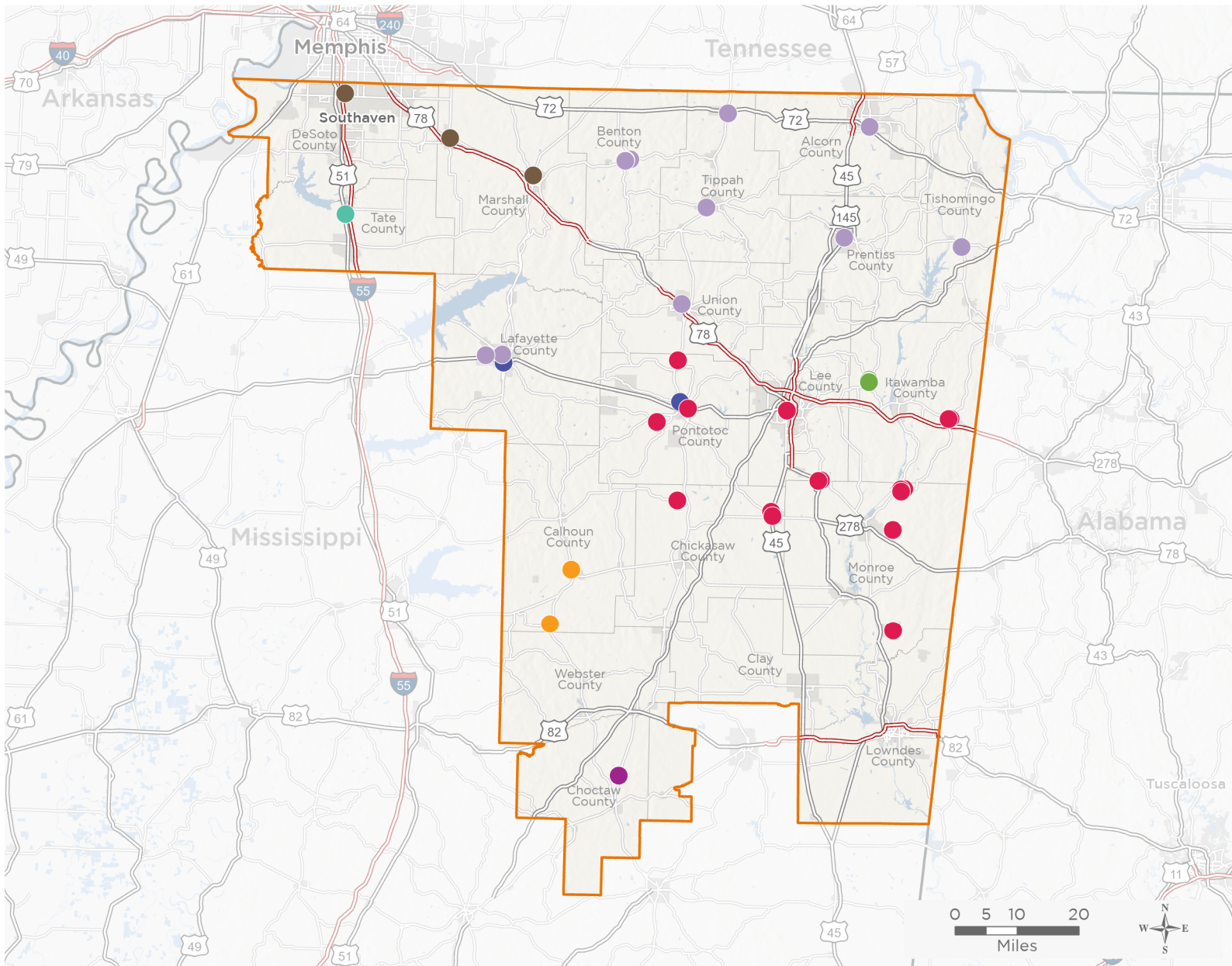
NATIONAL ASSOCIATION OF  
Community Health Centers

# Representative Trent Kelly

118th United States Congress

Mississippi's **1<sup>ST</sup>** Congressional District

The 8 federally-funded health center organizations with a presence in Mississippi's 1st Congressional District leverage **\$38,203,125** in federal investments to serve **202,710** patients.



**42**

**NUMBER OF DELIVERY SITES  
IN CONGRESSIONAL DISTRICT**

- Federally-funded Delivery Site (each color represents one organization)
- Health Center Program Look-Alikes
- 118th Congressional District Boundaries
- County Boundaries
- Interstates
- Highways
- Populated Places
- Major Roads

Notes | Delivery sites represent locations of organizations funded by the federal Health Center Program. Health Center Program Look-Alikes are community-based health care providers that meet the requirements of the HRSA Health Center Program, but do not receive Health Center Program funding. Some locations may overlap due to scale or may otherwise not be visible when mapped. Federal investments represent the total funding from the federal Health Center Program to grantees with a presence in the state in 2021.

Sources | Federally-Funded Delivery Site Locations and Health Center Program Look-Alikes: data.HRSA.gov, December 2022.  
Health Center Patients and Federal Funding | 2021 Uniform Data System, Bureau of Primary Health Care, HRSA.

© National Association of Community Health Centers, 2023. For more information, please contact [federalaffairs@nachc.org](mailto:federalaffairs@nachc.org).



42

### NUMBER OF DELIVERY SITES IN CONGRESSIONAL DISTRICT

(main organization in bold)

#### **AARON E. HENRY COMMUNITY HEALTH SERVICES CENTER, INC.**

M.J. Edwards Center | 643 W Service Dr Coldwater, MS 38618-3822

#### **ACCESS FAMILY HEALTH SERVICES, INC.**

Access Family Dental Clinic | 60024 Olive St Smithville, MS 38870-9719

Access Family Health Services - Houka | 106 Walker St Houka, MS 38850-9453

Access Family Health Services - Nettleton | 182 W Main St Nettleton, MS 38858-6075

ACCESS Family Health Services - Smithville | 60021 Monroe St Smithville, MS 38870-7779

Access Family Health Services - Tremont | 12725 Highway 23 N Tremont, MS 38876-8735

Access Family Health Services - Tupelo | 499 Gloster Creek Vlg Tupelo, MS 38801-4600

Access School Health-Hamilton | 40201 Hamilton Rd Hamilton, MS 39746-8648

Access School Health-Hatley | 60286 Hatley Rd Amory, MS 38821-7215

Access School Health-North Pontotoc | 8324 Highway 15 N Ecpu, MS 38841-9749

Access School Health-Okolona Elementary | 411 W Main St Okolona, MS 38860-1307

Access School Health-Okolona High | 404 Dr Howard Gunn St Okolona, MS 38860-1015

Access School Health-South Pontotoc | 1523 S Pontotoc Rd Pontotoc, MS 38863-9382

Access School Health - Nettleton | 179 Mullen Ave Nettleton, MS 38858-6033

Access School Health - Pontotoc Main | 135 E Oxford St Pontotoc, MS 38863-2111

Access School Health - Smithville | 60017 Highway 23 Smithville, MS 38870-9442

Access School Health - Tremont | 320 School Loop Dr Tremont, MS 38876-8575

#### **ARCARE**

MississippiCare-129 | 2173 S Lamar Blvd Oxford, MS 38655-5223

MississippiCare - 113 | 353 Highway 15 N Pontotoc, MS 38863-1103

#### **FAMILY HEALTH CARE CLINIC, INC.**

Family Health Care Clinic, Calhoun City--Head Start | 125 Carter Dr Calhoun City, MS 38916-7028

Family Health Care Clinic, Inc., Calhoun City | 105 Legion Ave Calhoun City, MS 38916-6601

#### **GREATER MERIDIAN HEALTH CLINIC, INC**

Winston County Family Medical Center | 14130 Highway 15 S STE D Louisville, MS 39339-6452

#### **MANTACHIE RURAL HEALTH CARE INC**

Mantachie Rural Health Care Behavioral Health Clinic | 5510 Highway 363 Mantachie, MS 38855-7197

Mantachie Rural Health Care, Inc. | 5681 Highway 363 Mantachie, MS 38855-7632

Mantachie Rural Health Care, Inc. Dental | 5500 Highway 363 Mantachie, MS 38855-7197

Mantachie Rural Health Care, Inc. School Based Clinic | 311 Mustang Dr Mantachie, MS 38855

#### **NORTH MISSISSIPPI PRIMARY HEALTH CARE, INC.**

Benton Medical Center | 15921 Boundary Dr Ashland, MS 38603-7740



**42**

**NUMBER OF DELIVERY SITES IN  
CONGRESSIONAL DISTRICT**

(main organization in bold)

**NORTH MISSISSIPPI PRIMARY HEALTH CARE, INC.**

Booneville Community Health Center | 208 N 1st St Booneville, MS 38829-2718

Charger Health and Wellness | 399 N 5th St Oxford, MS 38655-3600

Corinth Health Care Associates | 1415 S Harper Rd Corinth, MS 38834-6613

Mobile Unit | 15921 Boundary Dr Ashland, MS 38603-7740

New Albany Health Care Associates | 488 W Bankhead St New Albany, MS 38652-3319

NMPHC Pharmacy | 80 Church Ave Ashland, MS 38603-7208

NMPHC Wellness Center | 16025 Boundary Dr Ashland, MS 38603-7738

Oxford Health Care Associates | 2716 West Oxford Loop STE 171 Oxford, MS 38655-5722

Ripley Health Care Associates | 749 S Line St Ripley, MS 38663-2811

Tishomingo Health Care Associates | 1310 Main St Tishomingo, MS 38873-8410

Walnut Medical Center | 531 Main St Walnut, MS 38683-9349

**NORTHEAST MISSISSIPPI HEALTH CARE, INC.**

Byhalia Family Dental Clinic | 34 Brunswick St Byhalia, MS 38611-7000

Db a Byhalia Family Health Center | 12 Brunswick St Byhalia, MS 38611-7000

DeSoto Community Health Center | 7535 Airways Blvd Southaven, MS 38671-5834

Mt. Pleasant Family Hlth Clinic | 154 Mt Pleasant Rd Holly Springs, MS 38635