



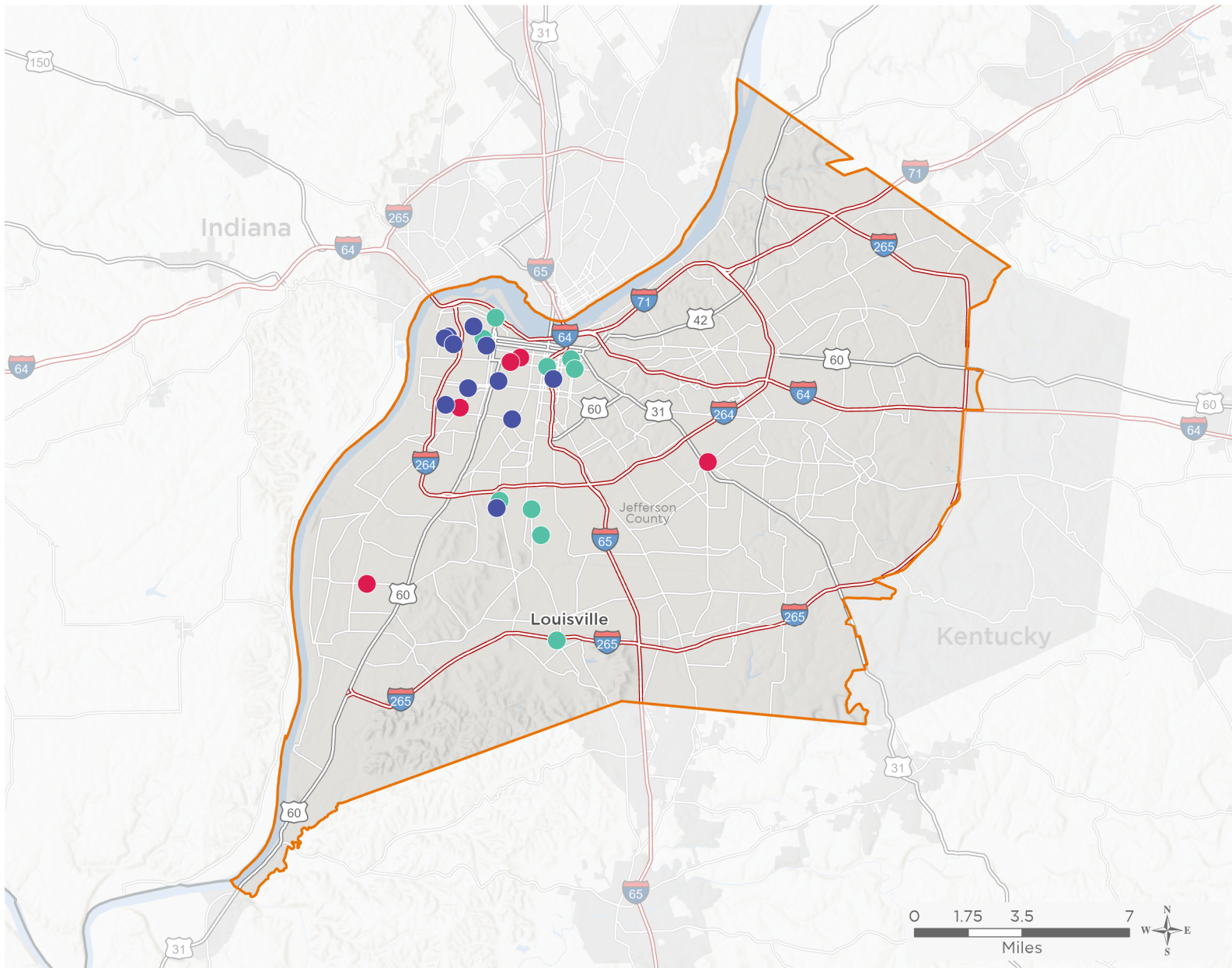
NATIONAL ASSOCIATION OF
Community Health Centers

Representative Morgan McGarvey

118th United States Congress

Kentucky's **3RD** Congressional District

The 3 federally-funded health center organizations with a presence in Kentucky's 3rd Congressional District leverage **\$14,067,462** in federal investments to serve **70,408** patients.



28

**NUMBER OF DELIVERY SITES
IN CONGRESSIONAL DISTRICT**

- Federally-funded Delivery Site (each color represents one organization)
- Health Center Program Look-Alikes
- 118th Congressional District Boundaries
- Interstates
- Highways
- Major Roads
- County Boundaries
- Populated Places

Notes | Delivery sites represent locations of organizations funded by the federal Health Center Program. Health Center Program Look-Alikes are community-based health care providers that meet the requirements of the HRSA Health Center Program, but do not receive Health Center Program funding. Some locations may overlap due to scale or may otherwise not be visible when mapped. Federal investments represent the total funding from the federal Health Center Program to grantees with a presence in the state in 2021.

Sources | Federally-Funded Delivery Site Locations and Health Center Program Look-Alikes: data.HRSA.gov, December 2022.
Health Center Patients and Federal Funding | 2021 Uniform Data System, Bureau of Primary Health Care, HRSA.

© National Association of Community Health Centers, 2023. For more information, please contact federalaffairs@nachc.org.



28

NUMBER OF DELIVERY SITES IN CONGRESSIONAL DISTRICT

(main organization in bold)

FAMILY HEALTH CENTERS, INC.

- Family Health Center-East Broadway | 834 E Broadway Louisville, KY 40204-1072
- Family Health Center - Americana | 4805 Southside Dr Louisville, KY 40214-2111
- Family Health Center - Americana Annex | 4803 Southside Dr Louisville, KY 40214-2111
- Family Health Center - Fairdale | 1000 Neighborhood Pl Fairdale, KY 40118-9697
- Family Health Center - Iroquois | 4100 Taylor Blvd Louisville, KY 40215-2342
- Family Health Centers - West Market | 2500 W Market St Louisville, KY 40212-1541
- Family Health Centers, Inc. - Family Health Center - Portland | 2215 Portland Ave Louisville, KY 40212-1033
- Family Health Centers, Inc. - Wayside Hotel Louisville | 120 W Broadway Louisville, KY 40202-2110
- Phoenix Health Center For The Homeless | 712 E Muhammad Ali Blvd Louisville, KY 40202-1643
- Temporary Site-Salvation Army Joy Center | 6306 Kenjoy Dr Louisville, KY 40214-2927

PARK DUVALLE COMMUNITY HEALTH CENTER INC

- Park DuValle at Central Health Center | 1130 W Chestnut St Louisville, KY 40203-2047
- Park DuValle at Newburg | 2237 Hikes Ln Louisville, KY 40218-2203
- Park DuValle at Pleasure Ridge Park Health Center | 5901 Greenwood Rd Louisville, KY 40258-2409
- Park DuValle Community Health Center, Inc. | 3015 Wilson Ave Louisville, KY 40211-1969
- Park DuValle Mobile Dentistry Van | 3015 Wilson Ave Louisville, KY 40211-1969
- The Russell Neighborhood Health Center | 1425 W Broadway Louisville, KY 40203-2059

SHAWNEE CHRISTIAN HEALTHCARE CENTER, INC.

- SCHC Dental Clinic | 222 Amy Ave Louisville, KY 40212-2522
- Shawnee Christian Healthcare Center, Inc. | 234 Amy Ave Louisville, KY 40212-2522
- The Wellness Center @ Atkinson Elementary | 2811 Duncan St Louisville, KY 40212-1825
- The Wellness Center @ Byck Elementary | 2328 Cedar St Louisville, KY 40212-1625
- The Wellness Center @ Dawson Orman | 900 S Floyd St Louisville, KY 40203-2331
- The Wellness Center @ Duvalle Education Center | 3610 Bohne Ave Louisville, KY 40211-2376
- The Wellness Center @ Hazelwood Elementary | 1325 Bluegrass Ave Louisville, KY 40215-1201
- The Wellness Center @ Maupin Elementary | 1312 Catalpa St Louisville, KY 40211-1731
- The Wellness Center @ McFerran Elementary | 1900 S 7th St Louisville, KY 40208-1606
- The Wellness Center @ Shawnee | 4001 Herman St Louisville, KY 40212-2588
- The Wellness Center @ Wheatley Elementary | 1107 S 17th St Louisville, KY 40210-2432
- The Wellness Center @ Young Elementary | 3526 W Muhammad Ali Blvd Louisville, KY 40212-2426