



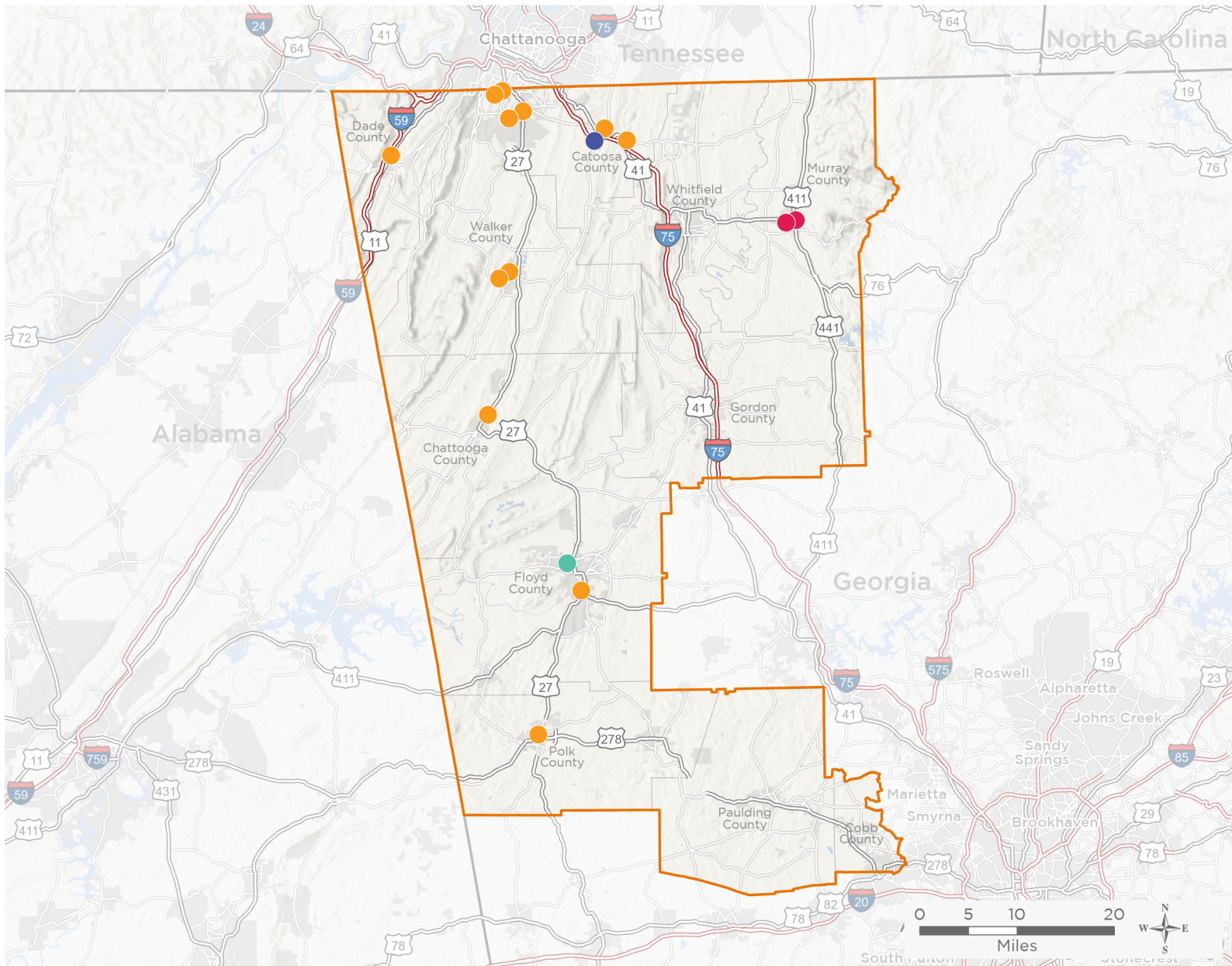
NATIONAL ASSOCIATION OF  
Community Health Centers

# Representative Marjorie Taylor Greene

118th United States Congress

Georgia's **14<sup>TH</sup>** Congressional District

The 4 federally-funded health center organizations with a presence in Georgia's 14th Congressional District leverage **\$14,471,572** in federal investments to serve **49,924** patients.



**20**

**NUMBER OF DELIVERY SITES  
IN CONGRESSIONAL DISTRICT**

- Federally-funded Delivery Site (each color represents one organization)
- Federally-funded Delivery Site (each color represents one organization)
- Federally-funded Delivery Site (each color represents one organization)
- Federally-funded Delivery Site (each color represents one organization)
- ▲ Health Center Program Look-Alikes
- 118th Congressional District Boundaries
- County Boundaries
- Populated Places
- Interstates
- Highways
- Major Roads

Notes | Delivery sites represent locations of organizations funded by the federal Health Center Program. Health Center Program Look-Alikes are community-based health care providers that meet the requirements of the HRSA Health Center Program, but do not receive Health Center Program funding. Some locations may overlap due to scale or may otherwise not be visible when mapped. Domestic violence shelters are excluded from the map and delivery site statistics. Federal investments represent the total funding from the federal Health Center Program to grantees with a presence in the state in 2021.

Sources | Federally-Funded Delivery Site Locations and Health Center Program Look-Alikes: data.HRSA.gov, December 2022.  
Health Center Patients and Federal Funding | 2021 Uniform Data System, Bureau of Primary Health Care, HRSA.

© National Association of Community Health Centers, 2023. For more information, please contact [federalaffairs@nachc.org](mailto:federalaffairs@nachc.org).



**20**

### NUMBER OF DELIVERY SITES IN CONGRESSIONAL DISTRICT

(main organization in bold)

- **FAMILY HEALTH CENTERS OF GEORGIA, INC., THE**  
The Family Health Center at Rome | 19 John Maddox Dr NW Ste B Rome, GA 30165-1477
- **GEORGIA MOUNTAINS HEALTH SERVICES, INC.**  
Georgia Mountains Health-Chatsworth | 1008 N 3rd Ave Chatsworth, GA 30705-2118  
School Based Health Center - Chatsworth Elementary School | 500 Green Rd Chatsworth, GA 30705-2745
- **NORTH GEORGIA HEALTHCARE CENTER, INC.**  
North Georgia Healthcare Center | 6120 Alabama Hwy Ringgold, GA 30736-2804
- **PRIMARY HEALTH CARE CENTER OF DADE, INC.**  
Gilbert Elementary SBHC | 87 S Burnt Mill Rd La Fayette, GA 30728-4263  
Mobile Dental Unit | 205 Jenkins Rd Apt Rossville, GA 30741-4016  
Mobile Medical Unit | 87 S Burnt Mill Rd La Fayette, GA 30728-4263  
Mobile Outreach Unit #1 | 205 Jenkins Rd Rossville, GA 30741-4016  
Mobile Outreach Unit #2 | 205 Jenkins Rd Rossville, GA 30741-4016  
Primary Health Care Center- Cedartown | 118 E Girard Ave Cedartown, GA 30125-2712  
Primary Health Care Center Rome | 1400 Crane St SW Rome, GA 30161-6333  
Primary Health Care Center Summerville | 11638 Highway 27 Summerville, GA 30747-8514  
Primary Health Care Center Trenton | 13570 N Main St Trenton, GA 30752-2012  
Primary Healthcare Center Abbingtion at Linwood | 10 Probasco St # 214 La Fayette, GA 30728-2316  
Primary Healthcare Center at Rossville Elementary - SBHC | 1250 Wilson Rd Rossville, GA 30741-1736  
Primary Healthcare Center at Rossville Middle School - SBHC | 316 Bull Dog Trl Rossville, GA 30741-6336  
Primary Healthcare Center, Ft. Oglethorpe | 2009 Old Lafayette Rd Fort Oglethorpe, GA 30742-3510  
SBHC - Ringgold Middle & High School | 29 Tiger Trl Ringgold, GA 30736-2024  
School Based Dental Mobile Unit | 87 S Burnt Mill Rd La Fayette, GA 30728-4263  
Tiger Creek Elementary SBHC | 134 Rhea McClanahan Dr Tunnel Hill, GA 30755-7328