



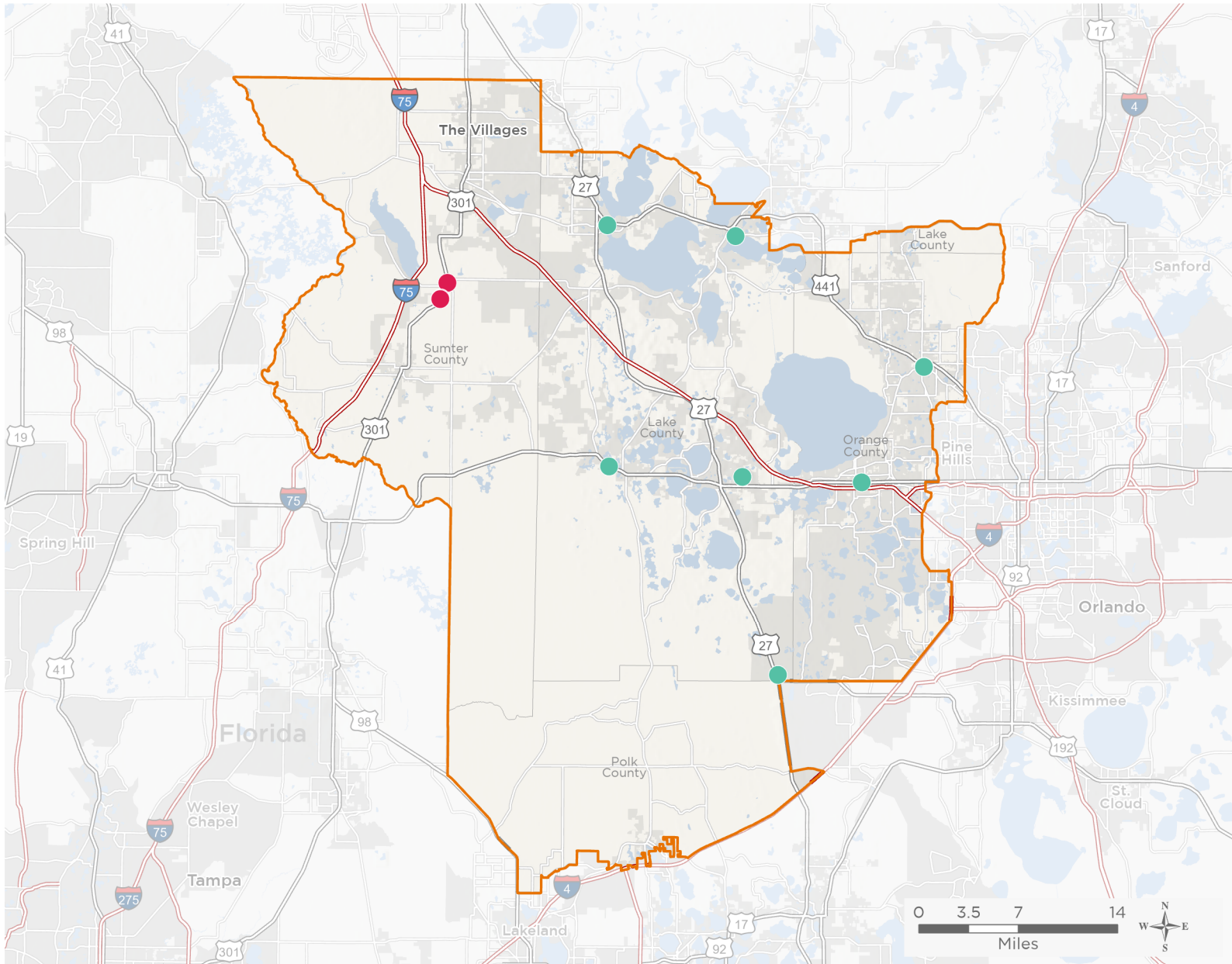
NATIONAL ASSOCIATION OF  
Community Health Centers

# Representative Daniel Webster

## 118th United States Congress

Florida's **11<sup>TH</sup>** Congressional District

The 2 federally-funded health center organizations with a presence in Florida's 11th Congressional District leverage **\$14,128,283** in federal investments to serve **93,027** patients.



- Federally-funded Delivery Site (each color represents one organization)
- Health Center Program Look-Alikes
- 118th Congressional District Boundaries
- Interstates
- Highways
- Major Roads
- County Boundaries
- Populated Places

**13**

**NUMBER OF DELIVERY SITES  
IN CONGRESSIONAL DISTRICT**

Notes | Delivery sites represent locations of organizations funded by the federal Health Center Program. Health Center Program Look-Alikes are community-based health care providers that meet the requirements of the HRSA Health Center Program, but do not receive Health Center Program funding. Some locations may overlap due to scale or may otherwise not be visible when mapped. Federal investments represent the total funding from the federal Health Center Program to grantees with a presence in the state in 2021.

Sources | Federally-Funded Delivery Site Locations and Health Center Program Look-Alikes: data.HRSA.gov, December 2022.  
Health Center Patients and Federal Funding | 2021 Uniform Data System, Bureau of Primary Health Care, HRSA.

© National Association of Community Health Centers, 2023. For more information, please contact [federalaffairs@nachc.org](mailto:federalaffairs@nachc.org).



13

**NUMBER OF DELIVERY SITES IN  
CONGRESSIONAL DISTRICT**

(main organization in bold)

**COMMUNITY HEALTH CENTERS, INC.**

Community Health Center - Apopka Dental Care | 210 E 7th St Apopka, FL 32703-5328

Community Health Center - Apopka Family & Ob Care | 225 E 7th St Apopka, FL 32703-5327

Community Health Center - Apopka Pediatric Care | 618 S Forest Ave Apopka, FL 32703-5338

Community Health Center - Groveland Family, Pediatric & Dental Care | 1296 W Broad St Groveland, FL 34736-2012

COMMUNITY HEALTH CENTER - LEESBURG Family Medical and Dental | 225 N 1st St Leesburg, FL 34748-5150

Community Health Centers-Tavares Family Medical and Dental | 212 E Main St Tavares, FL 32778-3808

Community Health Centers-Winter Garden Family and Dental Care | 13275 W Colonial Dr Winter Garden, FL 34787

Community Health Centers Clermont | 2140 N Don Wickham Dr STE C Clermont, FL 34711-1922

Four Corners Health Center | 509 Cagan View Rd Clermont, FL 34714-6405

**PROJECT HEALTH INC-DBA**

Dental Van | 1425 S US 301 Sumterville, FL 33585-5141

Independent Diagnostic Testing Facility (IDTF) | 1389 S US 301 Ste B Sumterville, FL 33585-5143

Langley Health Services Sumterville | 1389 S US 301 Sumterville, FL 33585-5143

Mobile Medical Unit | 301 S US 301 Sumterville, FL 33585