



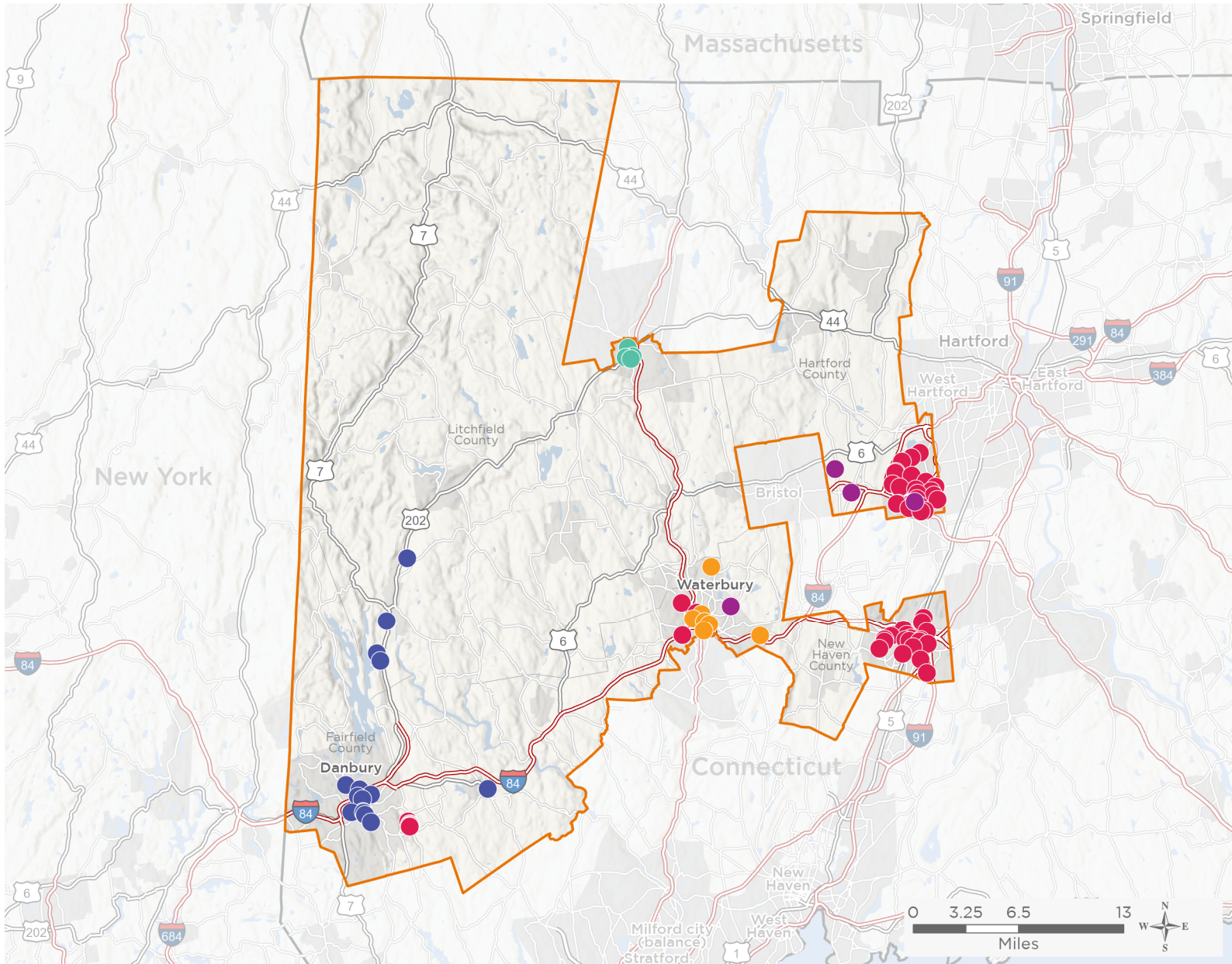
NATIONAL ASSOCIATION OF
Community Health Centers

Representative Jahana Hayes

118th United States Congress

Connecticut's **5TH** Congressional District

The 5 federally-funded health center organizations with a presence in Connecticut's 5th Congressional District leverage **\$17,866,326** in federal investments to serve **157,287** patients.



84

**NUMBER OF DELIVERY SITES
IN CONGRESSIONAL DISTRICT**

- Federally-funded Delivery Site (each color represents one organization)
- Health Center Program Look-Alikes
- 118th Congressional District Boundaries
- County Boundaries
- Interstates
- Highways
- Populated Places
- Major Roads

Notes | Delivery sites represent locations of organizations funded by the federal Health Center Program. Health Center Program Look-Alikes are community-based health care providers that meet the requirements of the HRSA Health Center Program, but do not receive Health Center Program funding. Some locations may overlap due to scale or may otherwise not be visible when mapped. Domestic violence shelters are excluded from the map and delivery site statistics. Federal investments represent the total funding from the federal Health Center Program to grantees with a presence in the state in 2021.

Sources | Federally-Funded Delivery Site Locations and Health Center Program Look-Alikes: data.HRSA.gov, December 2022.
Health Center Patients and Federal Funding | 2021 Uniform Data System, Bureau of Primary Health Care, HRSA.

© National Association of Community Health Centers, 2023. For more information, please contact federalaffairs@nachc.org.



84

NUMBER OF DELIVERY SITES IN CONGRESSIONAL DISTRICT

(main organization in bold)

COMMUNITY HEALTH AND WELLNESS CENTER OF GREATER TORRINGTON, INC

FISH Torrington Emergency Shelter | 332 S Main St Torrington, CT 06790-6767

Southwest Elementary School | 340 Litchfield St Torrington, CT 06790-6411

Sullivan Senior Center | 88 E Albert St Torrington, CT 06790-6522

Vogel Whetmore Elementary School | 68 Church St Torrington, CT 06790-5217

COMMUNITY HEALTH CENTER, INCORPORATED

ACES at Chase SBHC | 565 Chase Pkwy Rm 116-118 Waterbury, CT 06708-3303

Anna H. Rockwell SBHC | 400 Whittlesey Dr Rm 212 Bethel, CT 06801-1546

Benjamin Franklin Elementary School - SBHC | 426 W Main St Meriden, CT 06451-3802

Bethel High School SBHC | 300 Whittlesey Dr Bethel, CT 06801-1517

Bethel Middle School SBHC | 600 Whittlesey Dr Bethel, CT 06801-1531

Brass City School SBHC | 289 Willow St Waterbury, CT 06710-1515

Brookside School SBHC | 505 S Main St New Britain, CT 06051-4007

Casimir Pulaski Elementary School - SBHC | 100 Clearview Ave Meriden, CT 06450-6492

Chamberlain ES AKA The Pope John Paul II School SBHC | 221 Farmington Ave Rm 103 New Britain, CT 06053-2979

Chamberlain Elementary School SBHC | 120 Newington Ave New Britain, CT 06051-2119

Community Health Center Of Danbury | 8 Delay St Danbury, CT 06810-6654

Community Health Center Of Meriden | 134 State St Meriden, CT 06450-3293

Community Health Center Of New Britain | 85 Lafayette St New Britain, CT 06051-1803

Community Health Center of Waterbury | 51 N Elm St Waterbury, CT 06702-1545

Danbury City Shelter WYA | 41 New St Danbury, CT 06810-6512

East Side Community Center - YWCA | 600 East St New Britain, CT 06051-2132

Frank A. Berry School SBHC | 200 Whittlesey Dr Rm 34 Bethel, CT 06801-1528

Frank J Diloreto Elementary School SBHC | 732 Slater Rd New Britain, CT 06053-2239

Friendship Service Center of New Britain | 241 Arch St New Britain, CT 06051-2518

Gaffney Elementary School - SBHC | 322 Slater Rd New Britain, CT 06053-3458

Goodwin Technical High School SBHC | 735 Slater Rd New Britain, CT 06053-2200

Hanover Elementary School - SBHC | 208 E Main St Meriden, CT 06450-5607

Holmes Elementary School SBHC | 2150 Stanley St New Britain, CT 06053-1566

Israel Putnam Elementary School - SBHC | 133 Parker Ave Meriden, CT 06450-5925

Jefferson Elementary School SBHC | 140 Horseplain Rd New Britain, CT 06053-1678

John Barry Elementary School - SBHC | 124 Columbia St Meriden, CT 06451-3171

Kaynor Technical High School SBHC | 43 Tompkins St Waterbury, CT 06708-1416

Lincoln Elementary School SBHC | 145 Steele St New Britain, CT 06052-1555

Lincoln Middle School - SBHC | 164 Centennial Ave Meriden, CT 06451-3707

Maloney High School - SBHC | 121 Gravel St Meriden, CT 06450-4611

Meri Care Dental Center | 165 Miller St Meriden, CT 06450-4482



84

NUMBER OF DELIVERY SITES IN CONGRESSIONAL DISTRICT

(main organization in bold)

COMMUNITY HEALTH CENTER, INCORPORATED

Meriden Head Start SBHC | 398 Liberty St Meriden, CT 06450-4529
Nathan Hale Elementary School - SBHC | 277 Atkins Street Ext Meriden, CT 06450-3405
New Britain High School - SBHC | 110 Mill St New Britain, CT 06051-3413
Northend Elementary School SBHC | 160 Bassett St New Britain, CT 06051-3419
Pathways/Senderos Center SBHC | 43 Viets St New Britain, CT 06053-3988
Platt High School - SBHC | 220 Coe Ave Meriden, CT 06451-3812
Pulaski Middle School | 757 Farmington Ave New Britain, CT 06053-1364
Ralph M.T. Johnson School SBHC | 500 Whittlesey Dr Rm 124F Bethel, CT 06801-1518
Roger Sherman Elementary School - SBHC | 64 N Pearl St Meriden, CT 06450-4419
Roosevelt Middle School SBHC | 40 Goodwin St New Britain, CT 06051-2814
Slade Middle School SBHC | 183 Steele St New Britain, CT 06052-1555
Smalley Academy SBHC | 175 West St New Britain, CT 06051-1415
Smith Elementary School SBHC | 142 Rutherford St New Britain, CT 06051-3234
Thomas Edison Magnet Middle School | 1355 N Broad St Meriden, CT 06450-2438
Thomas Hooker Elementary School SBHC | 70 Overlook Dr Meriden, CT 06450-6933
Vance Elementary School SBHC | 183 Vance St New Britain, CT 06052-1634
Venture Academy | 883 Paddock Ave Meriden, CT 06450-7044
W.Y.A. Community Mental Health Associates (CMHA) | 233 Main St New Britain, CT 06051-4204
Washington Middle School - SBHC | 1225 N Broad St Meriden, CT 06450-2479
Wilcox Technical High School SBHC | 298 Oregon Rd Meriden, CT 06451-3721
WYA At Shelter Now | 43 Saint Casimir Dr Meriden, CT 06450-5729

CONNECTICUT INSTITUTE FOR COMMUNITIES, INC.

Broadview Middle School | 72 Hospital Ave Danbury, CT 06810-6021
CIFC/CHCGD Mobile Health Unit | 120 Main St Danbury, CT 06810-7834
Danbury High School | 43 Clapboard Ridge Rd Danbury, CT 06811-4529
Ellsworth Avenue Elementary School Dental Suite | 53 Ellsworth Ave Danbury, CT 06810-5948
Gdchc | 132 Main St Danbury, CT 06810-7863
GDCHC HATS Satellite Site | 21 Hayestown Ave Danbury, CT 06811-4819
GDCHC Main Street Satellite. Central Suite | 70 Main St Danbury, CT 06810-7832
GDCHC West Street Satellite | 152 West St Ste se-1 Danbury, CT 06810-3308
Greater Danbury Community Health Center | 120 Main St Danbury, CT 06810-7834
Greater Danbury Community Health Center, Suite 103/104 | 57 North St Danbury, CT 06810-5660
Hill and Plain Elementary School | 60 Old Town Park Rd New Milford, CT 06776-4228
New Milford High School | 388 Danbury Rd New Milford, CT 06776-4317
Newtown Middle School | 11 Queen St Newtown, CT 06470-2121
Rogers Park Middle School | Memorial Dr Danbury, CT 06810



84

**NUMBER OF DELIVERY SITES IN
CONGRESSIONAL DISTRICT**

(main organization in bold)

CONNECTICUT INSTITUTE FOR COMMUNITIES, INC.

Sarah Noble Intermediate School | 25 Sunny Valley Rd New Milford, CT 06776-3333

Schaghticoke Middle School | 23 Hipp Rd New Milford, CT 06776-2223

STAYWELL HEALTH CARE, INC.

Staywell Health Care, Inc. | 80 Phoenix Ave Waterbury, CT 06702-1418

StayWell Health Center | 402 E Main St Waterbury, CT 06702-1701

StayWell Health Center at St. V's | 114 Benedict St Waterbury, CT 06706-1007

StayWell Health Center at Western CT Mental Health Network | 95 Thomaston Ave Waterbury, CT 06702-1007

StayWell School Based Health Center at Driggs | 77 Woodlawn Ter Waterbury, CT 06710-1721

Wallace School Based Health Center | 3465 E Main St Waterbury, CT 06705-3815

Wilby School-Based Health Center | 568 Bucks Hill Rd Waterbury, CT 06704-1270

WHEELER CLINIC, INC.

Health & Wellness Center - Admin | 74 East St Plainville, CT 06062-2367

New Britain Family Health and Wellness Center | 40 Hart St New Britain, CT 06052-1743

Plainville Family Health and Wellness Center | 91 Northwest Dr Plainville, CT 06062-1534

Waterbury Health & Wellness Center | 855 Lakewood Rd Waterbury, CT 06704-5408

Wheeler Mobile Health & Wellness #1 | 91 Northwest Dr Plainville, CT 06062-1534