



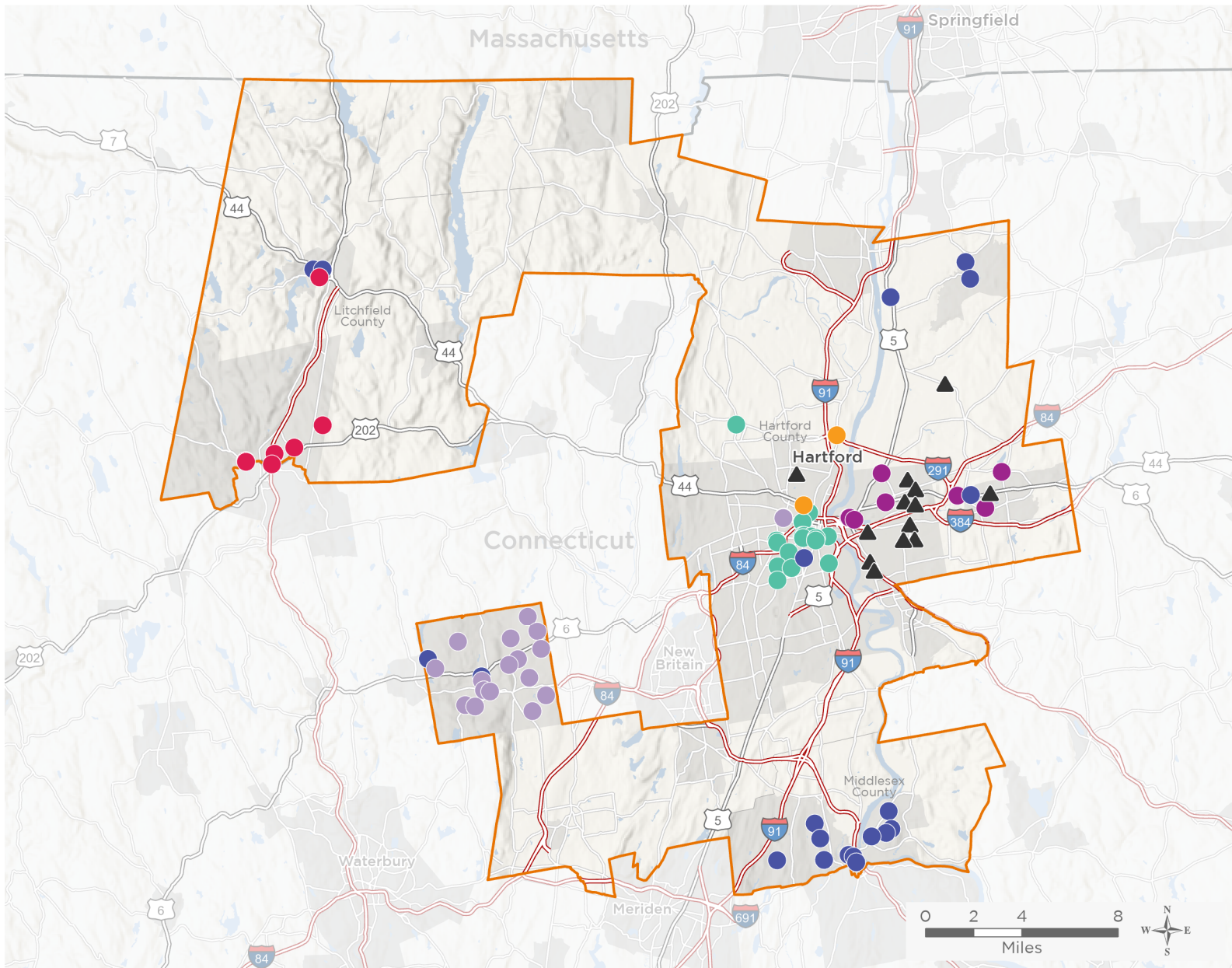
NATIONAL ASSOCIATION OF
Community Health Centers

Representative John B. Larson

118th United States Congress

Connecticut's **1ST** Congressional District

The 7 federally-funded health center organizations with a presence in Connecticut's 1st Congressional District leverage **\$24,759,902** in federal investments to serve **176,390** patients.



81

**NUMBER OF DELIVERY SITES
IN CONGRESSIONAL DISTRICT**

- Federally-funded Delivery Site (each color represents one organization)
- Health Center Program Look-Alikes
- 118th Congressional District Boundaries
- County Boundaries
- Populated Places
- Interstates
- Highways
- Major Roads

Notes | Delivery sites represent locations of organizations funded by the federal Health Center Program. Health Center Program Look-Alikes are community-based health care providers that meet the requirements of the HRSA Health Center Program, but do not receive Health Center Program funding. Some locations may overlap due to scale or may otherwise not be visible when mapped. Domestic violence shelters are excluded from the map and delivery site statistics. Federal investments represent the total funding from the federal Health Center Program to grantees with a presence in the state in 2021.

Sources | Federally-Funded Delivery Site Locations and Health Center Program Look-Alikes: data.HRSA.gov, December 2022.
Health Center Patients and Federal Funding | 2021 Uniform Data System, Bureau of Primary Health Care, HRSA.

© National Association of Community Health Centers, 2023. For more information, please contact federalaffairs@nachc.org.



81

**NUMBER OF DELIVERY SITES IN
CONGRESSIONAL DISTRICT**

(main organization in bold)

CHARTER OAK HEALTH CENTER, INC

175 Main Street | 175 Main St Hartford, CT 06106-1818

45 Wadsworth Street | 45 Wadsworth St Hartford, CT 06106-7108

A.I. Prince Technical School | 500 Brookfield St Hartford, CT 06106-3709

Charter Oak Health Center | 401 New Britain Ave Hartford, CT 06106-3833

Charter Oak Health Center Annex at 39 Grand Street | 39 Grand St Hartford, CT 06106-4607

Charter Oak Health Center Bloomfield | 693 Bloomfield Ave Bloomfield, CT 06002-2489

Charter Oak Health Center, Inc. | 21 Grand St Hartford, CT 06106-1541

Charter Oak Health Center; 32 Grand Street | 32 Grand St Hartford, CT 06106-4658

High Roads School of Hartford: High School | 245 Locust St Hartford, CT 06114-2008

High Roads School of Hartford: Primary and Middle School | 757 New Britain Ave Hartford, CT 06106-3913

House Of Bread | 27 Chestnut St Hartford, CT 06120-2810

Immaculate Conception Shelter | 574 Park St Hartford, CT 06106-4617

Open Hearth | 437 Sheldon St Hartford, CT 06106-1939

Parkville Community Elementary School | 1755 Park St Hartford, CT 06106-2160

Parkville Community School | 47 New Park Ave Hartford, CT 06106-2168

South Park Inn | 75 Main St Hartford, CT 06106-1806

Thomas J. McDonough Middle School | 111 Hillside Ave Hartford, CT 06106-3018

YWCA Of The Hartford Region, Inc | 135 Broad St Hartford, CT 06105-3718

COMMUNITY HEALTH AND WELLNESS CENTER OF GREATER TORRINGTON, INC

Community Health and Wellness Center | 10 Center St Winsted, CT 06098-1623

Community Health and Wellness Center of Greater Torrington | 469 Migeon Ave Torrington, CT 06790-4643

Forbes Elementary School | 500 Migeon Ave Torrington, CT 06790-4644

Mobile Medical Unit | 469 Migeon Ave Bldg Torrington, CT 06790-4643

Oliver Wolcott Vocational Technical School | 75 Oliver St Torrington, CT 06790-3859

Torrington Elementary School | 800 Charles St Torrington, CT 06790-3495

Torrington High School | 50 Major Besse Dr Torrington, CT 06790-3721

Torrington Middle School | 200 Middle School Dr Torrington, CT 06790-3168

COMMUNITY HEALTH CENTER, INCORPORATED

Bristol Central High School SBHC | 480 Wolcott St Bristol, CT 06010-6497

Bristol Preparatory Academy/Adult Education Center SBHC | 210 Redstone Hill Rd Ste 5 Bristol, CT 06010-7796

Bristol Technical High School | 431 Minor St Bristol, CT 06010-2269

Broad Brook Elementary SBHC | 14 Rye St Broad Brook, CT 06016-9552

Brownstone Intermediate School SBHC | 314 Main St Portland, CT 06480-1877

CHC of Hartford | 76 New Britain Ave Hartford, CT 06106-3305

CHC of Middletown | 675 Main St Middletown, CT 06457-2732



81

NUMBER OF DELIVERY SITES IN CONGRESSIONAL DISTRICT

(main organization in bold)

● **COMMUNITY HEALTH CENTER, INCORPORATED**

Commodore Macdonough ES - SBHC (Rita Hayes Wellness Center) | 66 Spring St Middletown, CT 06457-2262
Community Health Center of Bristol | 395 N Main St Bristol, CT 06010-4924
East Windsor High School SBHC | 76 S Main St East Windsor, CT 06088-9741
East Windsor Middle School SBHC | 38 Main St Broad Brook, CT 06016-9602
Gildersleeve Elementary School SBHC | 575 1/2 Main St Portland, CT 06480-1103
Lawrence Elementary School SBHC | Kaplan Dr Middletown, CT 06457
Mary P. Hinsdale - SBHC | 15 Hinsdale Ave Winsted, CT 06098-1107
Middletown Expulsion Program SBHC | 398 Main St Middletown, CT 06457-3310
Middletown High School SBHC | 200 La Rosa Ln Middletown, CT 06457-2148
Moody Elementary School SBHC | 300 Country Club Rd Middletown, CT 06457-2302
Odyssey Community School SBHC | 579 Middlesex Tnpk RM 149 Manchester, CT 06040-2728
Portland Middle and High School SBHC | 93 High St # 95 Portland, CT 06480-1656
Spencer Elementary School SBHC | 207 Westfield St Middletown, CT 06457-2042
The Isabelle Pearson School SBHC | 2 Wetmore Ave Winsted, CT 06098-1242
Valley View Elementary School SBHC | 81 High St Portland, CT 06480-1656

● **COMMUNITY HEALTH SERVICES, INCORPORATED**

Community Health Services at Windsor | 503 Windsor Ave Windsor, CT 06095-4015
Community Health Services, Inc. | 500 Albany Ave Hartford, CT 06120-2508

● **FIRST CHOICE HEALTH CENTERS, INC.**

444 Center Street, 3rd fl, Manchester CHR | 444 Center St Manchester, CT 06040-3926
478 Burnside Ave East Hartford, CT 06108 | 478 Burnside Ave Bldg East Hartford, CT 06108-2425
FCHC Mobile Health Services | 94 Connecticut Blvd East Hartford, CT 06108-3013
First Choice @ Howell Cheney Technical High School | 791 Middle Tpke W Manchester, CT 06040-1819
First Choice Health Centers | 265 Ellington Rd East Hartford, CT 06108-1176
First Choice Health Centers | 110 Connecticut Blvd East Hartford, CT 06108-3013
First Choice Health Centers | 94 Connecticut Blvd East Hartford, CT 06108-3013
First Choice Health Centers (Suite 230) | 150 N Main St Manchester, CT 06042-2086
First Choice Health Centers (Suite 240) | 150 N Main St Manchester, CT 06042-2086
First Choice Mobile Dental Services | 94 Connecticut Blvd East Hartford, CT 06108-3013
First Choice@809 Main Street | 809 Main St East Hartford, CT 06108-3117
First Choice@92 Connecticut Blvd | 92 Connecticut Blvd East Hartford, CT 06108-3013

● **MASSACHUSETTS LEAGUE OF COMMUNITY HEALTH CENTERS INC**

Community Health Services | 500 Albany Ave Hartford, CT 06120-2508



81

**NUMBER OF DELIVERY SITES IN
CONGRESSIONAL DISTRICT**

(main organization in bold)

● WHEELER CLINIC, INC.

- Bristol Arts and Innovation Magnet School | 70 Memorial Blvd Bristol, CT 06010-6568
- Bristol Central High School | 480 Wolcott St Bristol, CT 06010-6497
- Bristol Eastern High School | 632 King St Bristol, CT 06010-9202
- Bristol Health & Wellness Behavioral Health Center | 225 N Main St Bristol, CT 06010-4926
- Bristol Preparatory Academy | 210 Redstone Hill Rd Bristol, CT 06010-7796
- Chippens Hill Middle School | 551 Peacedale St Bristol, CT 06010-8939
- Edgewood School | 345 Mix St Bristol, CT 06010-2705
- Greene-Hills School | 718 Pine St Bristol, CT 06010-6923
- Hartford Family Health & Wellness Center | 43 Woodland St Hartford, CT 06105-2363
- Hubbell School | 90 W Washington St Bristol, CT 06010-5485
- Ivy Drive School | 160 Ivy Dr Bristol, CT 06010-3303
- Mountain View School | 71 Vera Rd Bristol, CT 06010-4857
- Northeast Middle School | 530 Stevens St Bristol, CT 06010-2587
- South Side School | 21 Tuttle Rd Bristol, CT 06010-9475
- Stafford School | 212 Louisiana Ave Bristol, CT 06010-4456
- West Bristol School | 500 Clark Ave Bristol, CT 06010-9601
- Wheeler Family Health and Wellness Center - 49 | 49 Woodland St Hartford, CT 06105-2337
- Wheeler Health and Wellness Center | 10 N Main St Bristol, CT 06010-8122

▲ HEALTH CENTER PROGRAM LOOK-ALIKES

Health Center Program Look-Alikes are community-based health care providers that meet the requirements of the HRSA Health Center Program, but do not receive Health Center Program funding.

INTERCOMMUNITY, INC.

- 777 Burnside Ave | 777 Burnside Ave East Hartford, CT 06108-2705
- InterCommunity's SBHC at Franklin Mayberry ES | 101 Great Hill Rd East Hartford, CT 06108-2833
- InterCommunity's SBHC at Hockanum ES | 191 Main St East Hartford, CT 06118-3603
- InterCommunity's SBHC at Langford ES | 61 Alps Dr East Hartford, CT 06108-1402
- InterCommunity's SBHC at Silver Lane School | 15 Mercer Ave East Hartford, CT 06118-1517
- InterCommunity's SBHC at Synergy Alternative HS | 40 Butternut Dr East Hartford, CT 06118-1906
- InterCommunity's Trantolo Health Center at East Hartford HS | 869 Forbes St East Hartford, CT 06118-1958
- InterCommunity Inc. | 16 Coventry St Hartford, CT 06112-1524
- InterCommunity Mobile Van #1 | 16 Coventry St Bldg Hartford, CT 06112-1524
- InterCommunity SBHC Illing Middle School | 227 Middle Tpke W Manchester, CT 06040-4047
- InterCommunity South Windsor | 828 Sullivan Ave Bldg 1st South Windsor, CT 06074-2093
- InterCommunity Woodland K-12 SBHC | 110 Long Hill Dr BLDG East Hartford, CT 06108-3809
- InterCommunity, Inc. | 281 Main St East Hartford, CT 06118-1823
- Sunset Ridge Middle School Based Health Center | 450 Forbes St East Hartford, CT 06118-1716