



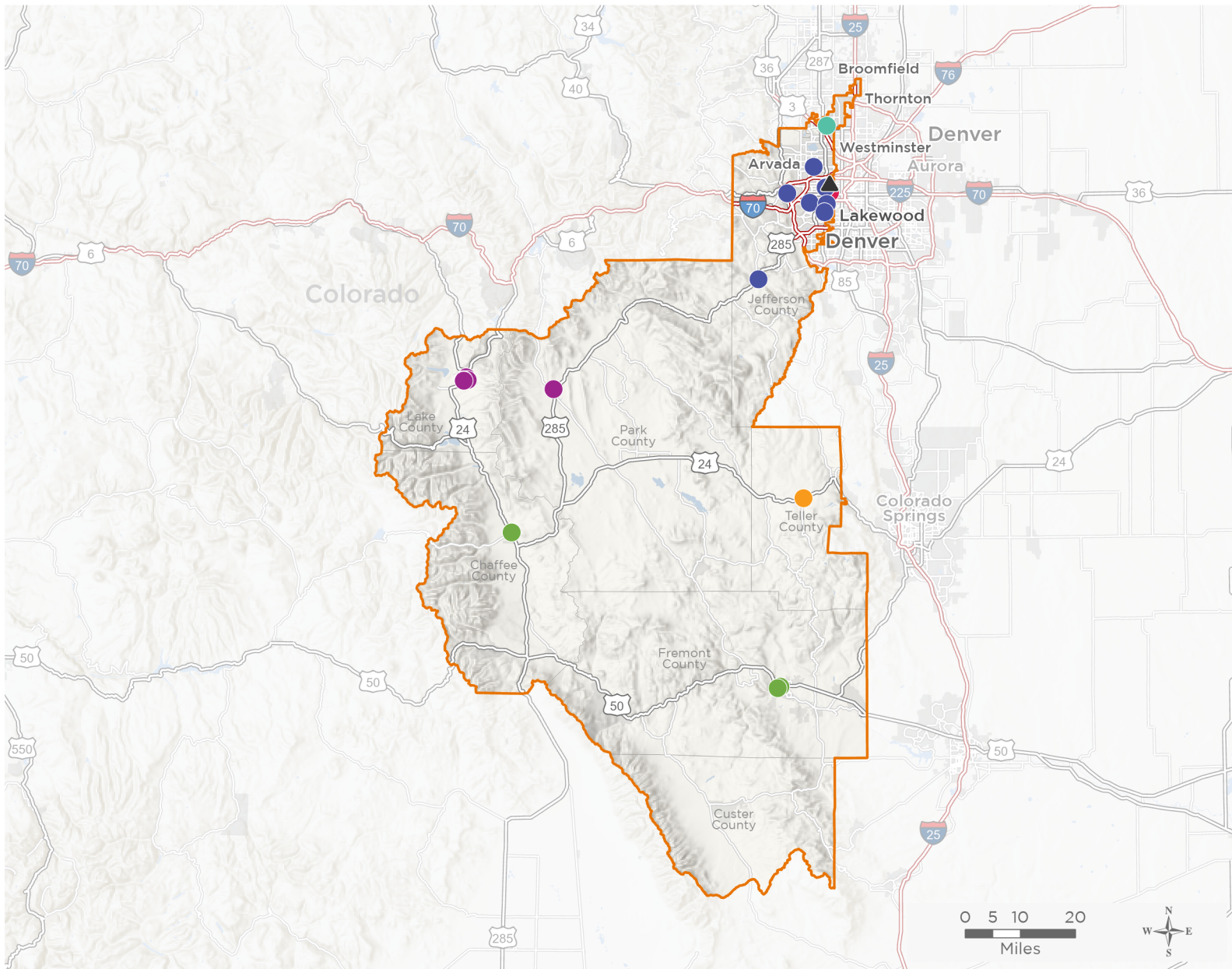
NATIONAL ASSOCIATION OF
Community Health Centers

Representative Brittany Pettersen

118th United States Congress

Colorado's 7TH Congressional District

The 6 federally-funded health center organizations with a presence in Colorado's 7th Congressional District leverage **\$48,892,503** in federal investments to serve **256,452** patients.



20

**NUMBER OF DELIVERY SITES
IN CONGRESSIONAL DISTRICT**

- ● ● Federally-funded Delivery Site (each color represents one organization)
- ▲ Health Center Program Look-Alikes
- 118th Congressional District Boundaries
- County Boundaries
- Populated Places
- Interstates
- Highways
- Major Roads

Notes | Delivery sites represent locations of organizations funded by the federal Health Center Program. Health Center Program Look-Alikes are community-based health care providers that meet the requirements of the HRSA Health Center Program, but do not receive Health Center Program funding. Some locations may overlap due to scale or may otherwise not be visible when mapped. Federal investments represent the total funding from the federal Health Center Program to grantees with a presence in the state in 2021.

Sources | Federally-Funded Delivery Site Locations and Health Center Program Look-Alikes: data.HRSA.gov, December 2022.
Health Center Patients and Federal Funding | 2021 Uniform Data System, Bureau of Primary Health Care, HRSA.

© National Association of Community Health Centers, 2023. For more information, please contact federalaffairs@nachc.org.



20

NUMBER OF DELIVERY SITES IN CONGRESSIONAL DISTRICT

(main organization in bold)

● **CLINICA CAMPESINA FAMILY HEALTH SERVICES**

Emerald Elementary School | 275 Emerald St Broomfield, CO 80020-2373

● **COLORADO COALITION FOR HOMELESS**

Renaissance Children's Center | 1797 Kendall St Lakewood, CO 80214-1454

● **METRO COMMUNITY PROVIDER NETWORK, INC.**

STRIDE CHC - Conifer | 11030 Kitty Dr RM 1 Conifer, CO 80433-7767

STRIDE CHC - Mobile Health Unit #2 | 7495 W 29th Ave Wheat Ridge, CO 80033-8002

STRIDE CHC - Mobile Health Care Unit | 11005 Ralston Rd Arvada, CO 80004-4551

STRIDE CHC - Alameda High School | 1255 S Wadsworth Blvd Lakewood, CO 80232-5406

STRIDE CHC - Golden High School | 701 24th St Golden, CO 80401-2379

STRIDE CHC - Rose Stein Elementary School | 80 S Teller St Lakewood, CO 80226-2044

STRIDE CHC - Union Square Health Plaza at Jefferson Center | 12055 W 2nd Pl Lakewood, CO 80228-1506

STRIDE CHC - West Arvada | 11005 Ralston Rd STE 100G Arvada, CO 80004-4551

STRIDE CHC - Wheat Ridge | 7495 W 29th Ave Wheat Ridge, CO 80033-8002

● **PEAK VISTA COMMUNITY HEALTH CENTERS**

Health Center at Divide | 34 Hybrook Rd S Divide, CO 80814-9219

● **SUMMIT COMMUNITY CARE CLINIC**

Lake County Dental | 223 Harrison Ave Leadville, CO 80461-3392

Lake County High School | 1000 W 4th St Leadville, CO 80461-3800

Lake County Intermediate School | 1000 W 6th St Leadville, CO 80461-3890

Park County RE-2 SBHC | 640 Hathaway St Fairplay, CO 80440-5204

West Park Elementary | 130 W 12th St Leadville, CO 80461-3415

● **VALLEY WIDE HEALTH SYSTEMS, INC.**

The Pulse School-Based Health Center | 1215 Main St STE B Canon City, CO 81212-3505

Valley-Wide Buena Vista | 707 US Highway 24 N Buena Vista, CO 81211-9863

Valley-Wide Canon City | 121 N 6th St Canon City, CO 81212-3329

▲ **HEALTH CENTER PROGRAM LOOK-ALIKES**

Health Center Program Look-Alikes are community-based health care providers that meet the requirements of the HRSA Health Center Program, but do not receive Health Center Program funding.

INNER CITY HEALTH CENTER

Wheat Ridge Family Health Clinic | 6301 W 38th Ave Bldg Wheat Ridge, CO 80033-5057