



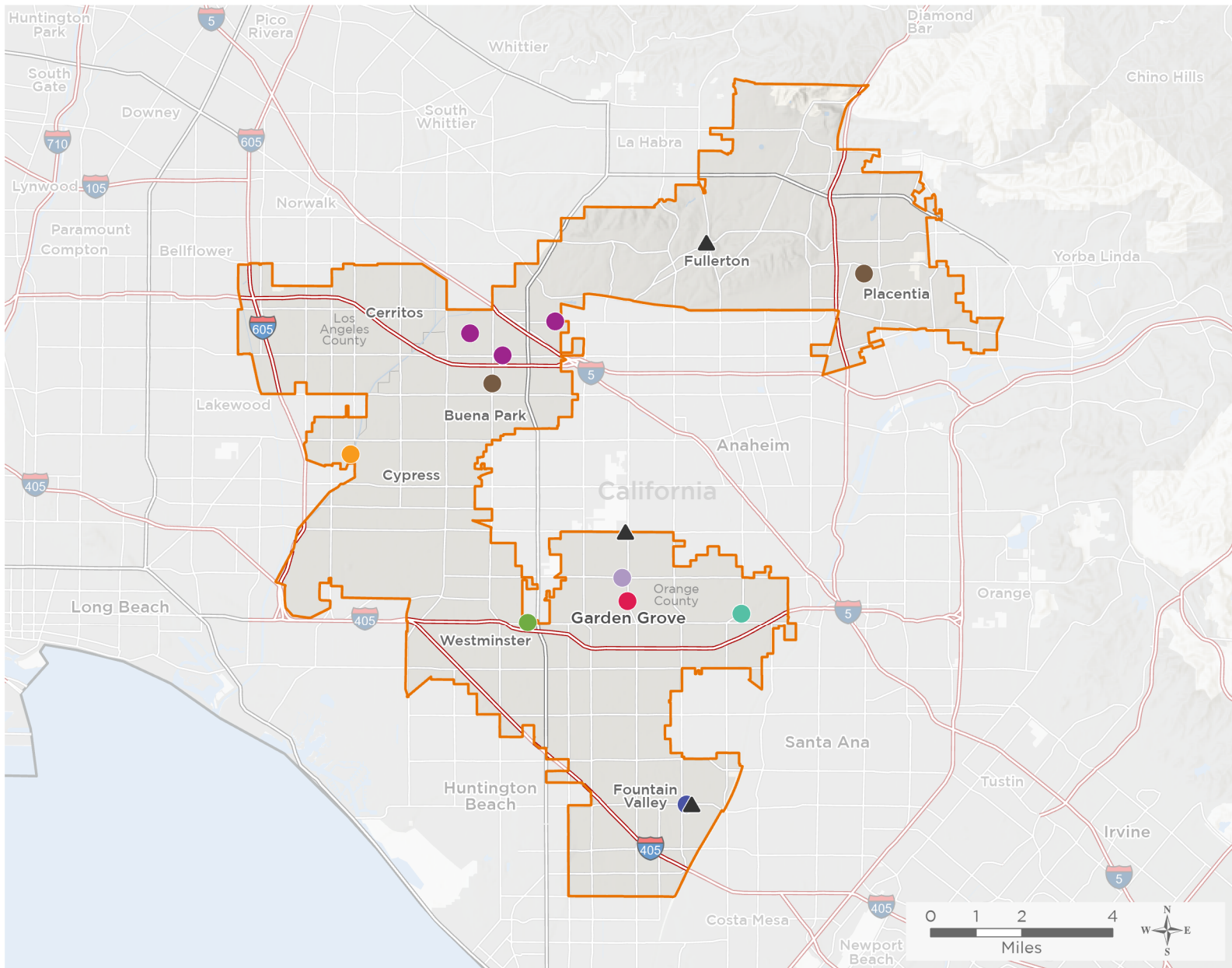
NATIONAL ASSOCIATION OF
Community Health Centers

Representative Michelle Steel

118th United States Congress

California's **45TH** Congressional District

The 8 federally-funded health center organizations with a presence in California's 45th Congressional District leverage **\$25,821,995** in federal investments to serve **338,540** patients.



14

**NUMBER OF DELIVERY SITES
IN CONGRESSIONAL DISTRICT**

- Federally-funded Delivery Site (each color represents one organization)
- ▲ Health Center Program Look-Alikes
- 118th Congressional District Boundaries
- County Boundaries
- Interstates
- Highways
- Populated Places
- Major Roads

Notes | Delivery sites represent locations of organizations funded by the federal Health Center Program. Health Center Program Look-Alikes are community-based health care providers that meet the requirements of the HRSA Health Center Program, but do not receive Health Center Program funding. Some locations may overlap due to scale or may otherwise not be visible when mapped. Federal investments represent the total funding from the federal Health Center Program to grantees with a presence in the state in 2021.

Sources | Federally-Funded Delivery Site Locations and Health Center Program Look-Alikes: data.HRSA.gov, December 2022.
Health Center Patients and Federal Funding | 2021 Uniform Data System, Bureau of Primary Health Care, HRSA.

© National Association of Community Health Centers, 2023. For more information, please contact federalaffairs@nachc.org.



14

NUMBER OF DELIVERY SITES IN CONGRESSIONAL DISTRICT

(main organization in bold)

- **ALTAMED HEALTH SERVICES CORPORATION**
AltaMed Medical Group: Garden Grove, Harbor | 12751 Harbor Blvd Garden Grove, CA 92840-5800
AltaMed Pharmacy - Garden Grove | 12751 Harbor Blvd Rm 100 Garden Grove, CA 92840-5800
- **CENTRAL CITY COMMUNITY HEALTH CENTER, INC.**
Central City Community Health Center-Garden Grove | 12511 Brookhurst St Garden Grove, CA 92840-4806
- **COMPLETE CARE COMMUNITY HEALTH CENTER, INC.**
Complete Care Community Health Center--Fountain Valley | 11100 Warner Ave STE 200 Fountain Valley, CA 92708
- **FAMILY HEALTH CARE CENTERS OF GREATER LOS ANGELES, INC.**
Hawaiian Gardens Health Center | 22310 Wardham Ave Hawaiian Gardens, CA 90716-1740
- **KOREAN COMMUNITY SERVICES**
KCS Buena Park Homeless Shelter Clinic | 6494 Caballero Blvd Buena Park, CA 90620-1128
KCS Health Center - Commonwealth | 8352 Commonwealth Ave Buena Park, CA 90621-2526
KCS Health Center Mobile | 7212 Orangethorpe Ave STE 9A Buena Park, CA 90621-4668
Korean Community Services dba KCS Health Ctr - Orangethorpe | 7212 Orangethorpe Ave STE 9A Buena Park, CA 90621
- **NHAN HOA COMPREHENSIVE HEALTH CARE CLINIC INC**
Nhan Hoa Comprehensive Health Care Clinic | 7761 Garden Grove Blvd Garden Grove, CA 92841-4200
- **SOUTHLAND INTEGRATED SERVICES, INC.**
Southland Integrated Services, Inc. | 9862 Chapman Ave Garden Grove, CA 92841-2711
Southland Integrated Services, Inc. | 9862 Chapman Ave Ste B Garden Grove, CA 92841-2726
- **ST. JUDE NEIGHBORHOOD HEALTH CENTERS**
St. Jude Dental Clinic | 7758 Knott Ave Buena Park, CA 90620-2420
Topaz School Clinic | 3232 Topaz Ln Fullerton, CA 92831-2609
- ▲ **HEALTH CENTER PROGRAM LOOK-ALIKES**
Health Center Program Look-Alikes are community-based health care providers that meet the requirements of the HRSA Health Center Program, but do not receive Health Center Program funding.
- FAMILIES TOGETHER OF ORANGE COUNTY**
Families Together of Orange County - Fountain Valley | 11180 Warner Ave STE 351-371 Fountain Valley, CA 92708
Families Together of Orange County - Garden Grove | 9918 Katella Ave STE A Anaheim, CA 92804-6466
- LIVINGSTONE COMMUNITY DEVELOPMENT CORPORATION**
Livingstone Community Health Clinic | 111 W Bastanchury Rd STE 1A Fullerton, CA 92835-2527