



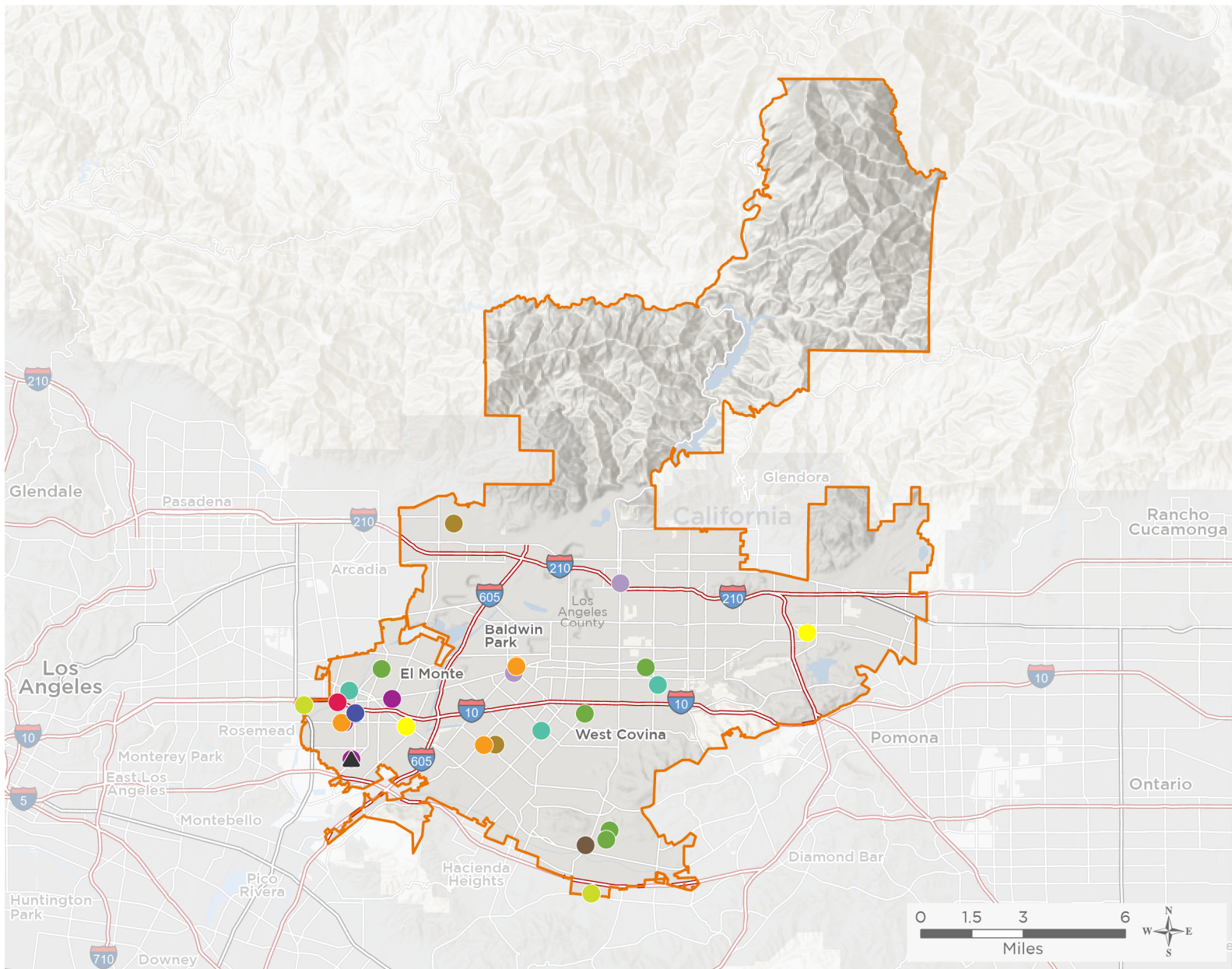
NATIONAL ASSOCIATION OF
Community Health Centers

Representative Grace Napolitano

118th United States Congress

California's **31ST** Congressional District

The 12 federally-funded health center organizations with a presence in California's 31st Congressional District leverage **\$65,261,293** in federal investments to serve **533,962** patients.



36

**NUMBER OF DELIVERY SITES
IN CONGRESSIONAL DISTRICT**

- Federally-funded Delivery Site (each color represents one organization)
- Health Center Program Look-Alikes
- 118th Congressional District Boundaries
- County Boundaries
- Populated Places
- Interstates
- Highways
- Major Roads

Notes | Delivery sites represent locations of organizations funded by the federal Health Center Program. Health Center Program Look-Alikes are community-based health care providers that meet the requirements of the HRSA Health Center Program, but do not receive Health Center Program funding. Some locations may overlap due to scale or may otherwise not be visible when mapped. Federal investments represent the total funding from the federal Health Center Program to grantees with a presence in the state in 2021.

Sources | Federally-Funded Delivery Site Locations and Health Center Program Look-Alikes: data.HRSA.gov, December 2022.
Health Center Patients and Federal Funding | 2021 Uniform Data System, Bureau of Primary Health Care, HRSA.

© National Association of Community Health Centers, 2023. For more information, please contact federalaffairs@nachc.org.



36

NUMBER OF DELIVERY SITES IN CONGRESSIONAL DISTRICT

(main organization in bold)

ALTAMED HEALTH SERVICES CORPORATION

AltaMed Medical and Dental Group: El Monte | 10418 Valley Blvd STE B El Monte, CA 91731-3600
AltaMed Medical and Dental Group: West Covina | 1300 S Sunset Ave West Covina, CA 91790-3342
AltaMed Medical Group: El Monte, Santa Anita | 3208 Santa Anita Ave STE 200 El Monte, CA 91733-1304
AltaMed PACE - Covina | 535 S 2nd Ave Covina, CA 91723-3013
AltaMed PACE - El Monte | 10420 Valley Blvd Ste A El Monte, CA 91731-2402
AltaMed Pharmacy - West Covina | 1300 S Sunset Ave Rm 100 West Covina, CA 91790-3342

ASIAN PACIFIC HEALTH CARE VENTURE, INC.

APHCV - El Monte/Rosemead Health Center | 9960 Baldwin Pl El Monte, CA 91731-2204

CENTER FOR FAMILY HEALTH & EDUCATION, INC.

Ctr for Family Health & Education, Inc. dba Priority Care Medical Group - El Monte 2 | 3229 Santa Anita Ave Fl 2
El Monte, CA 91733-1359
Ctr for Family Health & Education, Inc. dba Priority Care Medical Group El Monte 1 | 3229 Santa Anita Ave Fl 1
El Monte, CA 91733-1359

CENTRAL CITY COMMUNITY HEALTH CENTER, INC.

CCCHC- Baldwin Park Dental Mobile | 4126 Maine Ave Baldwin Park, CA 91706-3306
Central City Community Health Center - Baldwin Park #1 | 4126 Maine Ave Baldwin Park, CA 91706-3306
Central City Community Health Center - Baldwin Park #2 | 4160 Maine Ave Baldwin Park, CA 91706-3310
Central City Community Health Center - El Monte | 10050 Garvey Ave STE 111 El Monte, CA 91733-2089
Central City Community Health Center - La Puente | 13742 Amar Rd La Puente, CA 91746-1683
Central City Community Health Center - Mobile Medical Unit #3 | 4126 Maine Ave Baldwin Park, CA 91706-3306

COMMUNITY HEALTH ALLIANCE OF PASADENA

ChapCare - Peck | 3703 Peck Rd UNIT A-C El Monte, CA 91731-3543
ChapCare Vacco | 10408 Vacco St South El Monte, CA 91733-3328
ChapCare Garvey | 10127 Garvey Ave El Monte, CA 91733-2066
ChapCare Lime | 513 E Lime Ave STE 101-102 Monrovia, CA 91016-2982

EAST VALLEY COMMUNITY HEALTH CENTER INC

East Valley Community Health Center | 420 S Glendora Ave West Covina, CA 91790-3001
East Valley Community Health Center (EVCHC) El Monte | 4368 Santa Anita Ave El Monte, CA 91731-1606
East Valley Community Health Ctr Family Resource Ctr Dental & Vision | 17800 Renault St La Puente, CA 91744-5333
EVCHC - Covina Health Center | 276 W College St Covina, CA 91723-1902
EVCHC - Villacorta School Based Clinic | 17840 Villa Corta St La Puente, CA 91744-5342

EL PROYECTO DEL BARRIO, INC.

Azusa Health Center | 150 N Azusa Ave Azusa, CA 91702-3521
Baldwin Park Health Center | 3940 Maine Ave Baldwin Park, CA 91706-4220



36

NUMBER OF DELIVERY SITES IN CONGRESSIONAL DISTRICT

(main organization in bold)

FRIENDS OF FAMILY HEALTH CENTER

Friends of Family Health Center - La Puente | 565 S Azusa Way La Puente, CA 91744

HERALD CHRISTIAN HEALTH CENTER

HCHC-El Monte | 3401 Aero Jet Ave El Monte, CA 91731-2801

HCHC - City of Industry | 1661 Hanover Rd STE 103 City Of Industry, CA 91748-5705

MISSION CITY COMMUNITY NETWORK, INC.

Mission City Community Network- La Puente | 1025 Willow Ave La Puente, CA 91746-1617

Mission City Community Network - Monrovia | 513 E Lime Ave STE 103 Monrovia, CA 91016-2983

NORTHEAST VALLEY HEALTH CORPORATION

East Valley Community Health Ctr | 420 S Glendora Ave West Covina, CA 91790-3001

SOUTHERN CALIFORNIA MEDICAL CENTER, INC.

Southern California Medical Center | 12100 Valley Blvd STE 109A El Monte, CA 91732-3161

Southern California Medical Center - Mobile Clinic | 314 W Arrow Hwy San Dimas, CA 91773-2931

Southern California Medical Center - San Dimas | 314 W Arrow Hwy San Dimas, CA 91773-2931

Southern California Medical Center El Monte 2 | 12100 Valley Blvd STE 112 El Monte, CA 91732-3100

▲ HEALTH CENTER PROGRAM LOOK-ALIKES

Health Center Program Look-Alikes are community-based health care providers that meet the requirements of the HRSA Health Center Program, but do not receive Health Center Program funding.

BUDDHIST TZU CHI MEDICAL FOUNDATION

Tzu Chi Community Clinic, South El Monte | 10414 Vacco St South El Monte, CA 91733-3350

Tzu Chi Mobile Unit, Dental | 10414 Vacco St South El Monte, CA 91733-3350

Tzu Chi Mobile Unit, Medical | 10414 Vacco St South El Monte, CA 91733-3350

Tzu Chi Mobile Unit, Vision | 10414 Vacco St South El Monte, CA 91733-3350