



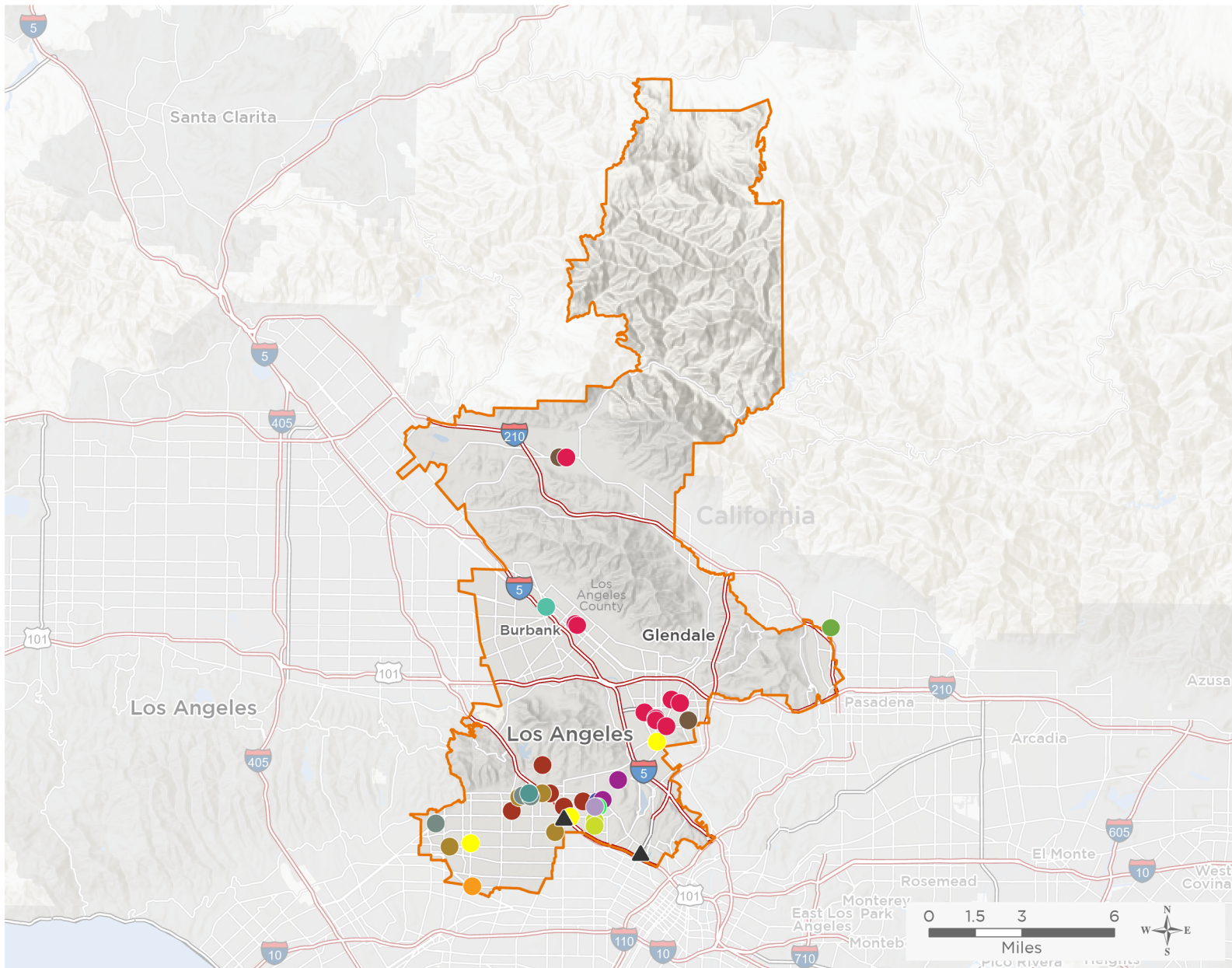
NATIONAL ASSOCIATION OF
Community Health Centers

Representative Adam Schiff

118th United States Congress

California's **30TH** Congressional District

The 15 federally-funded health center organizations with a presence in California's 30th Congressional District leverage **\$74,797,098** in federal investments to serve **596,561** patients.



44

**NUMBER OF DELIVERY SITES
IN CONGRESSIONAL DISTRICT**

- Federally-funded Delivery Site (each color represents one organization)
- Health Center Program Look-Alikes
- 118th Congressional District Boundaries
- County Boundaries
- Populated Places
- Interstates
- Highways
- Major Roads

Notes | Delivery sites represent locations of organizations funded by the federal Health Center Program. Health Center Program Look-Alikes are community-based health care providers that meet the requirements of the HRSA Health Center Program, but do not receive Health Center Program funding. Some locations may overlap due to scale or may otherwise not be visible when mapped. Federal investments represent the total funding from the federal Health Center Program to grantees with a presence in the state in 2021.

Sources | Federally-Funded Delivery Site Locations and Health Center Program Look-Alikes: data.HRSA.gov, December 2022.
Health Center Patients and Federal Funding | 2021 Uniform Data System, Bureau of Primary Health Care, HRSA.

© National Association of Community Health Centers, 2023. For more information, please contact federalaffairs@nachc.org.



44

NUMBER OF DELIVERY SITES IN CONGRESSIONAL DISTRICT

(main organization in bold)

ALL-INCLUSIVE COMMUNITY HEALTH CENTER

All-Inclusive Community Health Center | 1311 N San Fernando Blvd Burbank, CA 91504-4236

ALL FOR HEALTH, HEALTH FOR ALL, INC.

AFH-Burbank-2 | 303 S Glenoaks Blvd STE 9 Burbank, CA 91502-1190

All for Health, Health for All | 519 E Broadway Glendale, CA 91205-1110

All for Health, Health for All--Burbank | 401 S Glenoaks Blvd STE 101 Burbank, CA 91502-2707

All For Health, Health For All-Sunland | 8134 Foothill Blvd Sunland, CA 91040-2941

All For Health, Health For All - Pediatrics | 1030 S Glendale Ave STE 307 Glendale, CA 91205-2866

All For Health, Health For All - South Central Avenue | 800 S Central Ave STE 308 Glendale, CA 91204-4644

All For Health, South Central II | 710 S Central Ave STE 350 Glendale, CA 91204-4647

Cedar House | 141 S Cedar St Glendale, CA 91205-1207

Edison Pacific Health Center | 437 S Pacific Ave Glendale, CA 91204-1441

ALTAMED HEALTH SERVICES CORPORATION

AltaMed General Pediatrics @ Children's Hospital | 4650 W Sunset Blvd Los Angeles, CA 90027-6062

APLA HEALTH & WELLNESS

APLA Health-Olympic | 5901 W Olympic Blvd STE 500 Los Angeles, CA 90036-4670

APLA Health-Olympic #310 | 5901 W Olympic Blvd STE 310 Los Angeles, CA 90036-4664

ASIAN PACIFIC HEALTH CARE VENTURE, INC.

APHCV-Los Feliz Health Center | 1530 Hillhurst Ave Los Angeles, CA 90027-5516

APHCV - John Marshall High School Health Center | 3939 Tracy St Los Angeles, CA 90027-3207

COMMUNITY HEALTH ALLIANCE OF PASADENA

ChapCare Lincoln | 2055 Lincoln Ave Pasadena, CA 91103-1324

COMPLETE CARE COMMUNITY HEALTH CENTER, INC.

Complete Care Community Health Center - N. Vermont Avenue | 1300 N Vermont Ave STE 606 Los Angeles, CA 90027

COMPREHENSIVE COMMUNITY HEALTH CENTERS, INC.

Comprehensive Community Health Centers, Inc-Glendale | 801 S Chevy Chase Dr STE 250 Glendale, CA 91205-4433

Comprehensive Community Health Centers, Inc-Sunland | 8316 Foothill Blvd Sunland, CA 91040-2850

JWCH INSTITUTE, INC.

Student Health & Wellness Center | 855 N Vermont Ave Los Angeles, CA 90029-3516

Wesley Health Centers-- Vermont Annex | 964 N Vermont Ave Los Angeles, CA 90029-3529

Wesley Health Centers (Vermont) | 954 N Vermont Ave Los Angeles, CA 90029-3529

LOS ANGELES FREE CLINIC., THE

Beverly Health Center | 8405 Beverly Blvd Los Angeles, CA 90048-3401



44

NUMBER OF DELIVERY SITES IN CONGRESSIONAL DISTRICT

(main organization in bold)

LOS ANGELES FREE CLINIC., THE

Hollywood Wilshire Health Ctr & Wallis Annenberg Children & Family Hlth Ctr | 5205 Melrose Ave Los Angeles, CA 90038
S. Mark Taper Foundation Health Center | 6043 Hollywood Blvd Los Angeles, CA 90028-5411
Saban Community Clinic - Mobile Clinic Site | 6043 Hollywood Blvd Los Angeles, CA 90028-5411
The Center at Blessed Sacrament | 6636 Selma Ave Los Angeles, CA 90028-7115

LOS ANGELES LGBT CENTER

Los Angeles Gay & Lesbian Center | 1625 Schrader Blvd Los Angeles, CA 90028-6213
Los Angeles LGBT Center - Weho | 8745 Santa Monica Blvd West Hollywood, CA 90069-4507
Triangle Square, First Floor Mental Health Office | 1602 Ivar Ave Los Angeles, CA 90028-6353

MISSION CITY COMMUNITY NETWORK, INC.

Mission City Community Network- Fairfax | 359 N Fairfax Ave Los Angeles, CA 90036-2179
Mission City Community Network- Hollywood-Santa Monica | 5300 Santa Monica Blvd STE 202 Los Angeles, CA 90029
Mission City Community Network - Glendale | 222 W Eulalia St Glendale, CA 91204-2849

NORTHEAST VALLEY HEALTH CORPORATION

Children's Hospital Los Angeles - Beachwood House | 2471 N Beachwood Dr Los Angeles, CA 90068-3004
Childrens Hospital Los Angeles - Covenant House California | 1325 N Western Ave Los Angeles, CA 90027-5615
CHLA Division of Adolescent and Young Adult Medicine | 5000 W Sunset Blvd Ste 440 Los Angeles, CA 90027-5861
LAGLC Transitional Living Program | 1625 Schrader Blvd Los Angeles, CA 90028-6213
LAGLC Youth Center on Highland | 1220 N Highland Ave Los Angeles, CA 90038-1207
My Friend's Place - CHLA | 5850 Hollywood Blvd Los Angeles, CA 90028-5611
Saban Community Clinic | 8405 Beverly Blvd Los Angeles, CA 90048-3401
Saban Community Clinic -Hollywood Wilshire Health Center | 5205 Melrose Ave Los Angeles, CA 90038-3144
The Saban Community Clinic - The S. Mark Taper Foundation Health Ctr | 6043 Hollywood Blvd Los Angeles, CA 90028

QUEENSCARE HEALTH CENTERS

QueensCare Health Centers | 4618 Fountain Ave Los Angeles, CA 90029-1830

ST ANTHONY MEDICAL CENTERS

St. Anthony Medical Centers - Hollywood Site | 6368 Hollywood Blvd Los Angeles, CA 90028-6320

HEALTH CENTER PROGRAM LOOK-ALIKES

Health Center Program Look-Alikes are community-based health care providers that meet the requirements of the HRSA Health Center Program, but do not receive Health Center Program funding.

AMH COMPREHENSIVE MEDICAL CENTERS

AMH Comprehensive Medical Centers - Alvarado | 711 N Alvarado St STE 101 Los Angeles, CA 90026-4016

SAN JUDAS COMMUNITY HEALTH CENTER, INC.

San Judas Community Health Center (SJCHC) | 1080 N Western Ave Los Angeles, CA 90029-2310