



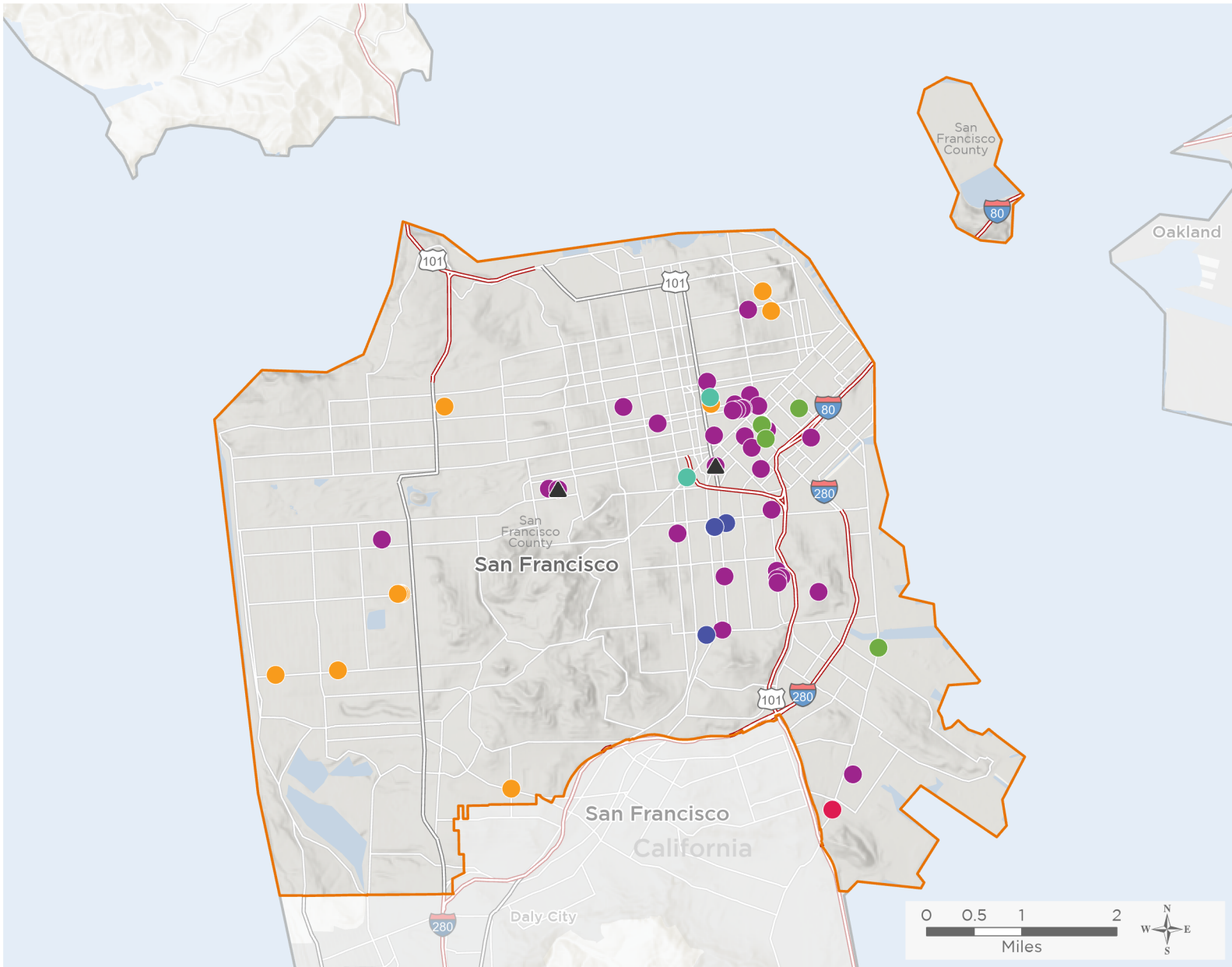
NATIONAL ASSOCIATION OF  
Community Health Centers

# Representative Nancy Pelosi

118th United States Congress

California's **11<sup>TH</sup>** Congressional District

The 6 federally-funded health center organizations with a presence in California's 11th Congressional District leverage **\$26,384,527** in federal investments to serve **108,560** patients.



**69**

**NUMBER OF DELIVERY SITES  
IN CONGRESSIONAL DISTRICT**

- Federally-funded Delivery Site (each color represents one organization)
- Health Center Program Look-Alikes
- 118th Congressional District Boundaries
- County Boundaries
- Interstates
- Highways
- Populated Places
- Major Roads

Notes | Delivery sites represent locations of organizations funded by the federal Health Center Program. Health Center Program Look-Alikes are community-based health care providers that meet the requirements of the HRSA Health Center Program, but do not receive Health Center Program funding. Some locations may overlap due to scale or may otherwise not be visible when mapped. Federal investments represent the total funding from the federal Health Center Program to grantees with a presence in the state in 2021.

Sources | Federally-Funded Delivery Site Locations and Health Center Program Look-Alikes: data.HRSA.gov, December 2022.  
Health Center Patients and Federal Funding | 2021 Uniform Data System, Bureau of Primary Health Care, HRSA.

© National Association of Community Health Centers, 2023. For more information, please contact [federalaffairs@nachc.org](mailto:federalaffairs@nachc.org).



69

### NUMBER OF DELIVERY SITES IN CONGRESSIONAL DISTRICT

(main organization in bold)

#### **ASIAN AND PACIFIC ISLANDER WELLNESS CENTER, INC.**

API Wellness at San Francisco LGBT Center | 1800 Market St STE 401 San Francisco, CA 94102-6227

Asian and Pacific Islander Wellness Center | 726 Polk St FL 4 San Francisco, CA 94109-7812

#### **MARIN CITY HEALTH & WELLNESS CENTER**

Bayview Hunters Point Clinic | 6301 3rd St San Francisco, CA 94124-3501

#### **MISSION AREA HEALTH ASSOCIATES**

Mission Bernal Adult Clinic | 1580 Valencia St STE 506 San Francisco, CA 94110-4418

Mission Bernal Pediatric After Hours Clinic | 1580 Valencia St STE 702 San Francisco, CA 94110-4415

Mission Bernal Pediatric Clinic | 1580 Valencia St STE 701 San Francisco, CA 94110-4421

Mission Neighborhood Health Center | 240 Shotwell St San Francisco, CA 94110-1323

Mission Neighborhood Resource Ct | 165 Capp St San Francisco, CA 94110-1209

#### **NORTH EAST MEDICAL SERVICES**

Nems Sunset Enrollment Service Center And Radiology | 1422 Noriega St San Francisco, CA 94122-4432

NEMS Traditional Medicine Center - Suite 403 | 728 Pacific Ave STE 403 San Francisco, CA 94133-4449

NEMS Traditional Medicine Center - Suite 503 | 728 Pacific Ave STE 503 San Francisco, CA 94133-4449

North East Medical Services | 1520 Stockton St San Francisco, CA 94133-3354

North East Medical Services - 1400 Noriega | 1400 Noriega St San Francisco, CA 94122-4432

North East Medical Services - 2308 Taraval | 2308 Taraval St San Francisco, CA 94116-2252

North East Medical Services - Clement | 1019 Clement St San Francisco, CA 94118-2112

North East Medical Services - Noriega | 1450 Noriega St San Francisco, CA 94122-4432

North East Medical Services - Ocean | 1443 Ocean Ave San Francisco, CA 94112-1731

North East Medical Services - Pacific | 728 Pacific Ave STE 201 San Francisco, CA 94133-4449

North East Medical Services - Pacific Pharmacy | 728 Pacific Ave STE 114-115 San Francisco, CA 94133-4457

North East Medical Services - Pacific Suite 604 | 728 Pacific Ave, Ste 604 San Francisco, CA 94133-4449

North East Medical Services - Polk | 650 Polk St San Francisco, CA 94102-3328

North East Medical Services - Taraval Street | 3431 Taraval St San Francisco, CA 94116-2050

#### **SAN FRANCISCO COMMUNITY CLINIC CONSORTIUM**

A Woman's Place | 1049 Howard St San Francisco, CA 94103-2822

Adult Medicine Clinics | 995 Potrero Ave FL 6 San Francisco, CA 94110-2859

Asian Pacific Islander Wellness | 730 Polk St San Francisco, CA 94109-7813

Castro-Mission Health Center | 3580 17th St San Francisco, CA 94110-1005

Castro Mission Health Center @ ZSFG | 995 Potrero Ave # W81 San Francisco, CA 94110-2859

Children's Health Center | 1001 Potrero Ave Ste 6M San Francisco, CA 94110-3518

Chinatown Public Health Center | 1490 Mason St San Francisco, CA 94133-4222

CHPY-Cole Street Clinic | 555 Cole St San Francisco, CA 94117-2800



69

### NUMBER OF DELIVERY SITES IN CONGRESSIONAL DISTRICT

(main organization in bold)

#### **SAN FRANCISCO COMMUNITY CLINIC CONSORTIUM**

- CHPY - Larkin Street Youth Center | 134 Golden Gate Ave San Francisco, CA 94102-3810
- Connecting Point | 995 Market St San Francisco, CA 94103-1702
- Curry Senior Clinic | 333 Turk St San Francisco, CA 94102-3703
- Day Labor Program | 3358 Cesar Chavez San Francisco, CA 94110-4607
- Episcopal Sanctuary | 201 8th St San Francisco, CA 94103-3910
- Family Health Center Ward 81, 85 | 995 Potrero Ave BLDG 80 San Francisco, CA 94110-2859
- Hamilton Family Residence | 260 Golden Gate Ave San Francisco, CA 94102-3706
- HealthRIGHT 360 | 558 Clayton St San Francisco, CA 94117-2907
- HealthRIGHT 360 Integrated Care Center | 1563 Mission St San Francisco, CA 94103-2543
- Martin De Porres | 225 Potrero Ave San Francisco, CA 94103-4814
- Maxine Hall Health Center | 1301 Pierce St San Francisco, CA 94115-4005
- Maxine Hall Temporary Health Centr | 1181 Golden Gate Ave San Francisco, CA 94115-4812
- Medical Respite and Sobering Center | 1171 Mission St San Francisco, CA 94103-1519
- Mission Neighborhood Hc | 165 Capp St San Francisco, CA 94110-1209
- Mission Neighborhood Health Ctr | 240 Shotwell St San Francisco, CA 94110-1323
- Multi-Service Center South | 525 5th St San Francisco, CA 94107-1012
- Next Door Transitional Shelter | 1001 Polk St San Francisco, CA 94109-6915
- North East Medical Services.. | 1520 Stockton St San Francisco, CA 94133-3354
- Ocean Park Health Center | 1351 24th Ave San Francisco, CA 94122-1616
- Potrero Hill Health Center | 1050 Wisconsin St San Francisco, CA 94107-3328
- Saint Anthony Medical Clinic | 150 Golden Gate Ave FL 2 San Francisco, CA 94102-3810
- Saint Martha's Shelter | 1050 S Van Ness Ave San Francisco, CA 94110-2616
- Salvation Army-Harbor Light | 1275 Harrison St San Francisco, CA 94103-4405
- San Francisco Community Clinic Consortium | 170 Capp St San Francisco, CA 94110-1210
- SF Gen Hospital Urgent Care Ctr | 1001 Potrero Ave Ste 6M San Francisco, CA 94110-3518
- SF General Hosp-Positive Hlth | 1001 Potrero Ave San Francisco, CA 94110-3594
- SF General Hosp Women's Hlth Ctr | 1001 Potrero Ave Bldg 5F San Francisco, CA 94110-3518
- South of Market Health Center | 229 7th St San Francisco, CA 94103-4003
- South Of Market Health Ctr | 551 Minna St San Francisco, CA 94103-2831
- Southeast Health Center | 2401 Keith St San Francisco, CA 94124-3231
- Tom Waddell Health Center | 50 Dr Tom Waddell Pl San Francisco, CA 94102-4506
- Tom Waddell Urban Health Clinic | 220 Golden Gate Ave San Francisco, CA 94102-3795
- Windsor Hotel | 238 Eddy St San Francisco, CA 94102-2756
- Zuckerberg San Francisco General Hospital | 1001 Potrero Ave San Francisco, CA 94110-3518

#### **SAN FRANCISCO MEDICAL CENTER OUTPATIENT IMPROVEMENT PROGRAMS, INC**

- LoPrest Health Center - 551 | 551 Minna St San Francisco, CA 94103-2831



69

**NUMBER OF DELIVERY SITES IN  
CONGRESSIONAL DISTRICT**

(main organization in bold)

**SAN FRANCISCO MEDICAL CENTER OUTPATIENT IMPROVEMENT PROGRAMS, INC**

LoPrest Health Center - 555 | 555 Minna St San Francisco, CA 94103-2831

SFMC OIP - Bayview Child Health Center | 3450 3rd St San Francisco, CA 94124-1443

SMHC Senior Clinic | 317 Clementina St San Francisco, CA 94103-4104

South of Market Health Center | 229 7th St San Francisco, CA 94103-4003

**HEALTH CENTER PROGRAM LOOK-ALIKES**

Health Center Program Look-Alikes are community-based health care providers that meet the requirements of the HRSA Health Center Program, but do not receive Health Center Program funding.

**HEALTHRIGHT 360**

Haight Ashbury Integrated Care Center | 1563 Mission St San Francisco, CA 94103-2543

Haight Ashbury Medical Clinic | 558 Clayton St San Francisco, CA 94117-2907