



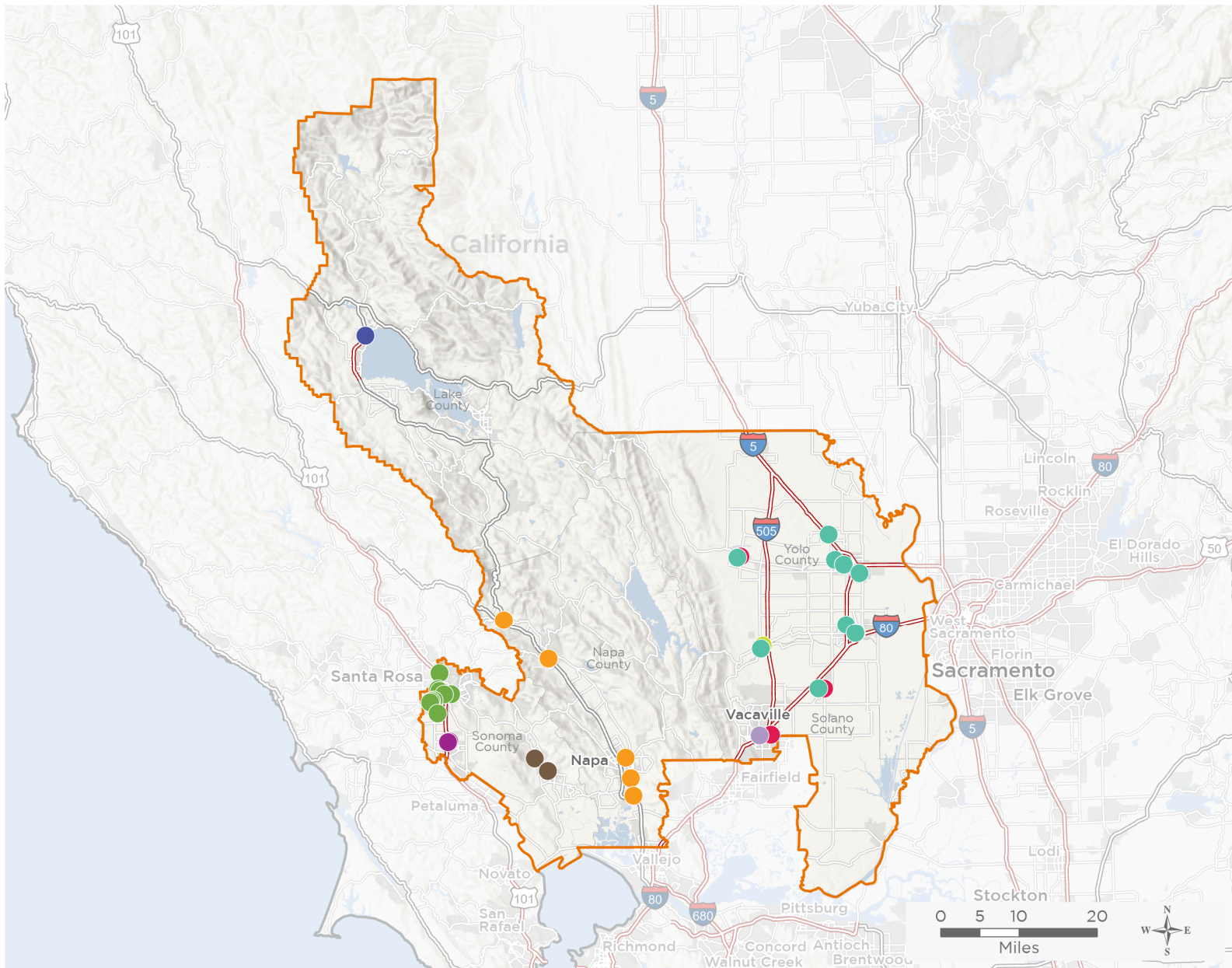
NATIONAL ASSOCIATION OF
Community Health Centers

Representative Mike Thompson

118th United States Congress

California's **4TH** Congressional District

The 9 federally-funded health center organizations with a presence in California's 4th Congressional District leverage **\$37,821,699** in federal investments to serve **292,243** patients.



40

**NUMBER OF DELIVERY SITES
IN CONGRESSIONAL DISTRICT**

- Federally-funded Delivery Site (each color represents one organization)
- Health Center Program Look-Alikes
- 118th Congressional District Boundaries
- County Boundaries
- Interstates
- Highways
- Populated Places
- Major Roads

Notes | Delivery sites represent locations of organizations funded by the federal Health Center Program. Health Center Program Look-Alikes are community-based health care providers that meet the requirements of the HRSA Health Center Program, but do not receive Health Center Program funding. Some locations may overlap due to scale or may otherwise not be visible when mapped. Federal investments represent the total funding from the federal Health Center Program to grantees with a presence in the state in 2021.

Sources | Federally-Funded Delivery Site Locations and Health Center Program Look-Alikes: data.HRSA.gov, December 2022.
Health Center Patients and Federal Funding | 2021 Uniform Data System, Bureau of Primary Health Care, HRSA.

© National Association of Community Health Centers, 2023. For more information, please contact federalaffairs@nachc.org.



40

NUMBER OF DELIVERY SITES IN CONGRESSIONAL DISTRICT

(main organization in bold)

COMMUNICARE HEALTH CENTERS

Cache Creek High School SBHC | 14320 2nd St Yolo, CA 95697-9506
Davis Community Clinic | 2051 John Jones Rd Davis, CA 95616-9701
Davis Mental Health Navigation Center | 600 A St BLDG Davis, CA 95616-3649
Esparto Elementary School | 17120 Omega St Esparto, CA 95627-2235
Family Wellness Center - Courage Building | 453 1st St Woodland, CA 95695-4023
Family Wellness Center - Unity Building | 455 1st St Woodland, CA 95695-4023
Hansen Family Health Center | 215 W Beamer St Woodland, CA 95695-2510
Martin Luther King, Jr. High School | 635 B St Davis, CA 95616-3853
Sutter West Medical Group | 111 Main St STE B Winters, CA 95694-1930
Sutter West Medical Group | 125 N Lincoln St STE G Dixon, CA 95620-3260
Woodland Community College | 2300 E Gibson Rd Woodland, CA 95776-5156

COMMUNITY MEDICAL CENTERS

Community Medical Centers, Dixon | 131 W A St Dixon, CA 95620-3437
Community Medical Centers, Esparto | 17050 S Grafton St Esparto, CA 95627
Community Medical Centers, Vacaville | 600 Nut Tree Rd STE 310 Vacaville, CA 95687-4686

MENDOCINO COMMUNITY HEALTH CLINIC INC

Lakeview Health Center | 5335 Lakeshore Blvd Lakeport, CA 95453-6123

OLE HEALTH

OLE Health - Calistoga | 911 Washington St Calistoga, CA 94515-1433
OLE Health - North Napa Campus | 1141 Pear Tree Ln STE 100 Napa, CA 94558-6485
OLE Health - South Napa Campus | 300 Hartle Ct Napa, CA 94559-4078
OLE Health - St. Helena | 1222 Pine St STE A Saint Helena, CA 94574-1830
OLE Health Mobile Health Center | 2650 Napa Valley Corporate Dr Napa, CA 94558-6284
South Napa Shelter | 100 Hartle Ct Napa, CA 94559-4020

PETALUMA HEALTH CENTER INC

Petaluma Health Center, Inc. Mobile Unit | 5900 State Farm Dr Rohnert Park, CA 94928-2149
Rohnert Park Community Acupuncture | 6040 Commerce Blvd STE 108 Rohnert Park, CA 94928-2181
Rohnert Park Health Center | 5900 State Farm Dr STE 200 Rohnert Park, CA 94928-2149

SANTA ROSA COMMUNITY HEALTH CENTERS

Bridge Campus | 2235 Challenger Way STE 109 Santa Rosa, CA 95407-5421
Brookwood Campus | 983 Sonoma Ave Santa Rosa, CA 95404-4818
Caritas Campus | 301 W 6th St STE 214 Santa Rosa, CA 95401-7632
Dental Campus | 1110 N Dutton Ave Santa Rosa, CA 95401-4606
Dutton Campus | 1300 N Dutton Ave Santa Rosa, CA 95401-7112



40

NUMBER OF DELIVERY SITES IN CONGRESSIONAL DISTRICT

(main organization in bold)

SANTA ROSA COMMUNITY HEALTH CENTERS

Elsie Allen Campus | 599 Bellevue Ave Santa Rosa, CA 95407-7713
Lombardi Campus | 751 Lombardi Ct STE B Santa Rosa, CA 95407-5454
Pediatric Campus | 711 Stony Point Rd STE 17 Santa Rosa, CA 95407-6848
St. Joseph's Dental Clinic | 751 Lombardi Ct Santa Rosa, CA 95407-6798
Van #2 (ProMaster) | 1300 N Dutton Ave Santa Rosa, CA 95401-7112
Vista Campus | 3569 Round Barn Cir Santa Rosa, CA 95403-5781

SOLANO, COUNTY OF

Family Health Services - Vacaville | 1119 E Monte Vista Ave Vacaville, CA 95688-3009

SONOMA VALLEY COMMUNITY HEALTH CENTER

Sonoma Valley Community Health Center | 19270 Sonoma Hwy Sonoma, CA 95476-5414
SVCHC at Hanna Boys Center | 17000 Arnold Dr Sonoma, CA 95476-3242
SVCHC Vision Center | 19312 Sonoma Hwy Sonoma, CA 95476-5416

WINTERS HEALTHCARE FOUNDATION, INC.

Winters Healthcare 172 E. Grant Avenue | 172 E Grant Ave Winters, CA 95694-1780