



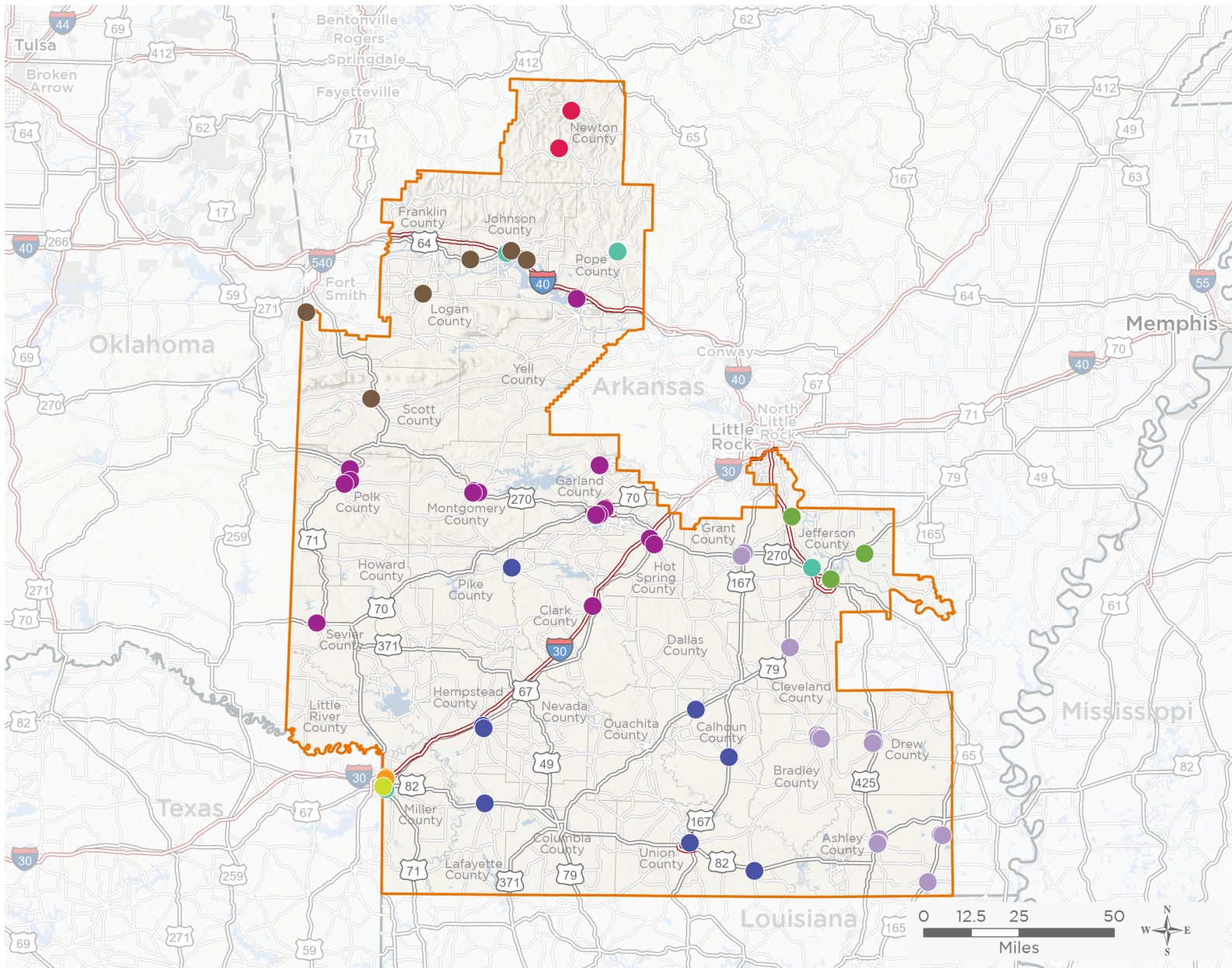
NATIONAL ASSOCIATION OF  
Community Health Centers

# Representative Bruce Westerman

## 118th United States Congress

Arkansas's **4<sup>TH</sup>** Congressional District

The 9 federally-funded health center organizations with a presence in Arkansas's 4th Congressional District leverage **\$41,542,679** in federal investments to serve **273,512** patients.



**66**

**NUMBER OF DELIVERY SITES  
IN CONGRESSIONAL DISTRICT**

- Federally-funded Delivery Site (each color represents one organization)
- Health Center Program Look-Alikes
- 118th Congressional District Boundaries
- County Boundaries
- Interstates
- Highways
- Populated Places
- Major Roads

Notes | Delivery sites represent locations of organizations funded by the federal Health Center Program. Health Center Program Look-Alikes are community-based health care providers that meet the requirements of the HRSA Health Center Program, but do not receive Health Center Program funding. Some locations may overlap due to scale or may otherwise not be visible when mapped. Federal investments represent the total funding from the federal Health Center Program to grantees with a presence in the state in 2021.

Sources | Federally-Funded Delivery Site Locations and Health Center Program Look-Alikes: data.HRSA.gov, December 2022.  
Health Center Patients and Federal Funding | 2021 Uniform Data System, Bureau of Primary Health Care, HRSA.

© National Association of Community Health Centers, 2023. For more information, please contact [federalaffairs@nachc.org](mailto:federalaffairs@nachc.org).



**66**

### NUMBER OF DELIVERY SITES IN CONGRESSIONAL DISTRICT

(main organization in bold)

#### **ARCARE**

ARcare-105 | 11720 Sr 27 Hector, AR 72843-8712

ARcare - 049 | 125 Wellness Way STE 250 Hot Springs, AR 71913-6478

ARcare - 102 | 11520 Sr 27 Hector, AR 72843-8710

ARcare - 192 | 1903 W Clark Rd Clarksville, AR 72830-3919

ARcare - 51 | 401 East St Texarkana, AR 71854-6507

ARcare - 79 | 7300 Dollarway Rd STE 116 White Hall, AR 71602-3023

#### **BOSTON MOUNTAIN RURAL HEALTH CENTER, INC.**

Boston Mountain Rural Health Center - Jasper | 609 W Clark St Jasper, AR 72641

Boston Mountain Rural Hlth Ctr | Hc 31 Box 310 Deer, AR 72628-9616

#### **CABUN RURAL HEALTH SERVICE**

Amity Community Health Center | 210 N Main St Amity, AR 71921-9733

Bearden Health Center | 150 N School St Bearden, AR 71720-9594

Cabun Rural Health Services, Inc. | 402 N Lee St Hampton, AR 71744-8937

El Dorado School Based Health Center | 601 Martin Luther King Ave Ste A El Dorado, AR 71730-6449

Hope Community Health Center | 820 S Main St Hope, AR 71801-6523

HOPE High School SBHC | 200 E 18th St Hope, AR 71801-8203

Lewisville Family Practice Ctr. | 1117 Chestnut St Lewisville, AR 71845-8513

Strong Clinic | 253 S Concord Rd Strong, AR 71765

#### **EAST TEXAS BORDER HEALTH CLINIC**

East Texas Border Health Clinic dba Genesis PrimeCare-Arkansas | 1205 E 35th St Texarkana, AR 71854-2746

ETBHC Genesis PrimeCare -Texarkana AR #2 | 4077 Jefferson Ave Texarkana, AR 71854-1509

#### **HEALTHY CONNECTIONS INC**

HCI-Arkadelphia Clinic | 301 Professional Park Dr STE B Arkadelphia, AR 71923-5317

Healthy Connections- Mobile Dental Unit | 136 Health Park Dr Mena, AR 71953-9072

Healthy Connections- Mobile Medical Unit | 136 Health Park Dr Mena, AR 71953-9072

Healthy Connections-DeQueen Clinic | 1206 W Collin Raye Dr De Queen, AR 71832-2030

Healthy Connections-Hot Springs Village | 4585 N Highway 7 STE 11 Hot Springs Village, AR 71909-8202

Healthy Connections-Malvern | 900 Martin Luther King Blvd STE 200 Malvern, AR 72104-2217

Healthy Connections - Hot Springs Central/McAuley | 208 McAuley Ct STE B Hot Springs, AR 71913-6344

Healthy Connections - Russellville | 3312 W Main St Russellville, AR 72801-2304

Healthy Connections, Inc. | 136 Health Park Dr Mena, AR 71953-9072

Healthy Connections, Inc. College of the Ouachitas Clinic | 1 College Cir Malvern, AR 72104-3520

Healthy Connections, Inc. Hot Springs Central Clinic | 3604 Central Ave STE D Hot Springs National Park, AR 71913

Healthy Connections, Inc. Hot Springs Clinic | 1723 Malvern Ave Hot Springs National Park, AR 71901-7133



**66**

### NUMBER OF DELIVERY SITES IN CONGRESSIONAL DISTRICT

(main organization in bold)

#### HEALTHY CONNECTIONS INC

Healthy Connections, Inc. Mena Street Clinic | 1201 Mena St Mena, AR 71953-4280  
Malvern School Based Health Center | 1517 S Main St Malvern, AR 72104-5231  
Montgomery County Community Clinic | 534 Luzerne St Mount Ida, AR 71957-9449  
Mount Ida School Based Health Center-Elementary Campus | 430 Ballpark Rd Mount Ida, AR 71957-8013  
Mount Ida School Based Health Center-High School Campus | 338 Whittington St Mount Ida, AR 71957-9445  
Ouachita River Health Center: Acorn Campus | 139 School Ln Mena, AR 71953-8432

#### JEFFERSON COMPREHENSIVE CARE SYSTEM, INC.

Alzheimer Clinic | 309 S Edline Alzheimer, AR 72004-8559  
JEFFERSON COMPREHENSIVE CARE SYSTEM, Inc. | 1101 S Tennessee St Pine Bluff, AR 71601-5801  
Redfield Clinic 1 | 823 River Rd Redfield, AR 72132-9667

#### MAINLINE HEALTH SYSTEMS INC

Brunson Elementary School Behavioral Health Clinic | 212 Scoby Dr Warren, AR 71671-2050  
Drew Central School District | 250 University Dr Monticello, AR 71655-8891  
Hamburg High School School Based Clinic | 1119 S Main St Hamburg, AR 71646-8983  
Hamburg Middle School-SBHC | 1109 Cub Dr Hamburg, AR 71646  
Mainline Health System, Inc. | 233 N Main St Portland, AR 71663-9230  
Mainline Health Systems, Inc.-Warren 2 | 1012 E Church St STE B Warren, AR 71671-3530  
Mainline Rison | 505 Sycamore St Rison, AR 71665  
Mainline UAM | 136 University Ct Monticello, AR 71655  
Mainline UAM Behavioral Health | 517 University Dr Monticello, AR 71655  
Monticello Community Health Center | 535 Jordan Dr Monticello, AR 71655-5714  
Noble/Allbritton Elementary School Based Clinic | 206 N Barlett St Hamburg, AR 71646-3342  
Portland Elementary School Based Clinic | 314 Highway 160 E Portland, AR 71663-9262  
Sheridan Clinic | 506 Little Creek Cut Off Rd Sheridan, AR 72150-7798  
Sheridan High School Clinic | 512 W Church St STE A Sheridan, AR 72150-2016  
Warren Dental Clinic | 208 E Church St Warren, AR 71671-3412  
Warren Eastside School | 408 N Bradley St Warren, AR 71671-2208  
Warren High School Behavioral Health Center | 800 N Walnut St Warren, AR 71671-2009  
Warren Middle School Behavioral Health Center | 210 Scoby Dr Warren, AR 71671-2050  
Wilmot Clinic | 203 Mccombs St Wilmot, AR 71676-8800

#### RIVER VALLEY PRIMARY CARE SERVICES

Bonanza Wellness Center | 920 S Highway 45 Bonanza, AR 72916-3420  
Clarksville Behavioral Health | 106 N Hill St Clarksville, AR 72830-2961  
Clarksville Community Health Center | 708 W Main St Clarksville, AR 72830-3411  
Lamar School District Health Center | 635 Childers Ave Lamar, AR 72846-8161



NATIONAL ASSOCIATION OF  
Community Health Centers

# Representative Bruce Westerman

## 118th United States Congress

Arkansas's **4<sup>TH</sup>** Congressional District

**66**

### **NUMBER OF DELIVERY SITES IN CONGRESSIONAL DISTRICT**

(main organization in bold)

#### **RIVER VALLEY PRIMARY CARE SERVICES**

River Valley Primary Care Services Inc. | 9755 W State Highway 22 Ratcliff, AR 72951-9000

RVPCS - Coal Hill Family Clinic | 1273 E Highway 64 Coal Hill, AR 72832

Waldron Family Clinic | 2074 Rice St Waldron, AR 72958-7435

#### **SPECIAL HEALTH RESOURCES FOR TEXAS, INCORPORATED**

All for Kids Clinic | 300 E 6th St Texarkana, AR 71854-5207