

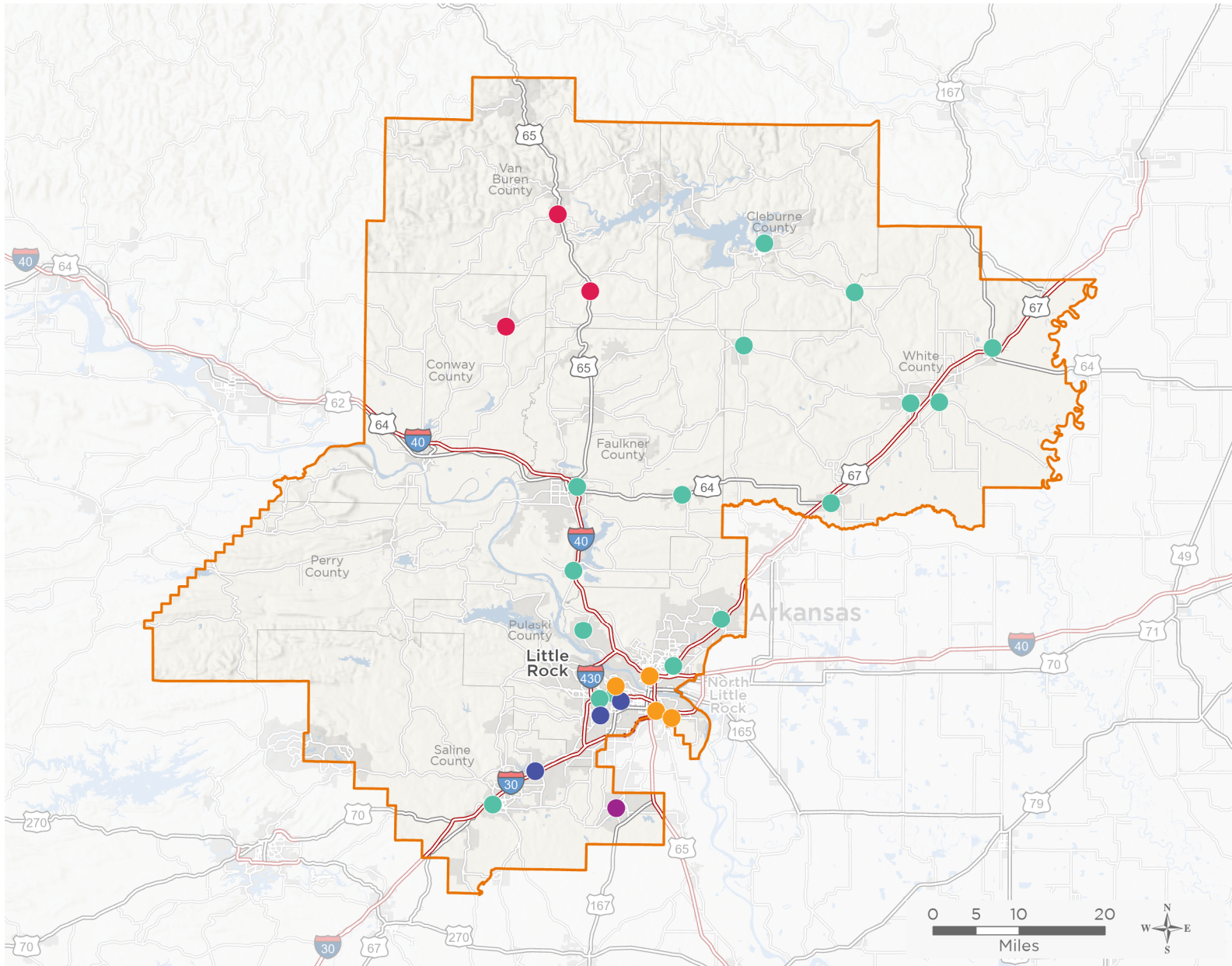


NATIONAL ASSOCIATION OF
Community Health Centers

Representative French Hill 118th United States Congress

Arkansas's **2ND** Congressional District

The 5 federally-funded health center organizations with a presence in Arkansas's 2nd Congressional District leverage **\$31,467,986** in federal investments to serve **169,848** patients.



30

**NUMBER OF DELIVERY SITES
IN CONGRESSIONAL DISTRICT**

- ● ● Federally-funded Delivery Site (each color represents one organization)
- ▲ Health Center Program Look-Alikes
- 118th Congressional District Boundaries
- County Boundaries
- Populated Places
- Interstates
- Highways
- Major Roads

Notes | Delivery sites represent locations of organizations funded by the federal Health Center Program. Health Center Program Look-Alikes are community-based health care providers that meet the requirements of the HRSA Health Center Program, but do not receive Health Center Program funding. Some locations may overlap due to scale or may otherwise not be visible when mapped. Federal investments represent the total funding from the federal Health Center Program to grantees with a presence in the state in 2021.

Sources | Federally-Funded Delivery Site Locations and Health Center Program Look-Alikes: data.HRSA.gov, December 2022.
Health Center Patients and Federal Funding | 2021 Uniform Data System, Bureau of Primary Health Care, HRSA.

© National Association of Community Health Centers, 2023. For more information, please contact federalaffairs@nachc.org.



30

NUMBER OF DELIVERY SITES IN CONGRESSIONAL DISTRICT

(main organization in bold)

ARCARE

- ARcare-111 | 1400 Braden St STE 1 Jacksonville, AR 72076-3721
- ARcare-121 | 630 W South St Benton, AR 72015-4258
- ARcare-131 | 138 School Rd Rose Bud, AR 72137-9339
- ARcare-16 | 178 Highway 167 N Bald Knob, AR 72010-4058
- ARcare-31 | 304 Main St Pangburn, AR 72121-8959
- ARcare-64 | 305 Rodgers Dr Searcy, AR 72143-7432
- ARcare-87 | 1127 Main St Vilonia, AR 72173-9525
- ARcare - 078 | 3901 McCain Park Dr STE 102 North Little Rock, AR 72116-7849
- ARcare - 138 | 500 S University Ave STE 316 Little Rock, AR 72205-5342
- ARcare - 142 | 1301 W Center St Beebe, AR 72012-3105
- ARcare - 32 | 501 Millwood Cir STE E Maumelle, AR 72113-6304
- ARcare - 42 | 8 N Railroad Ave Mayflower, AR 72106-9430
- ARcare - 75 | 406 Rodgers Dr Searcy, AR 72143-7433
- ARcare - 80 | 606 W Wilbur Mills Ave Kensett, AR 72082-9051
- ARcare - 85 | 1511 Highway 25B Heber Springs, AR 72543-1701
- ARcare - 88 | 8924 Kanis Rd Little Rock, AR 72205-6414
- ARcare 24 | 1500 Museum Rd Conway, AR 72032-4785

BOSTON MOUNTAIN RURAL HEALTH CENTER, INC.

- BMRHC - Clinton Clinic | 465 Medical Center Pkwy Clinton, AR 72031-7946
- Boston Mountain Rural Health Center-Center Ridge | 1094 Catholic Point Rd Center Ridge, AR 72027-8403
- Boston Mountain Rural Health Center, Inc. | 326 Southside Rd Bee Branch, AR 72013-9137

HEALTHY CONNECTIONS INC

- Healthy Connections-Bryant | 2700 N Prickett Rd Ste 1C Bryant, AR 72022-7511
- Healthy Connections-Little Rock Midtown Ste 260 | 1100 N University Ave STE 260 Little Rock, AR 72207-6367
- Healthy Connections - Little Rock Midtown Ste 200 | 1100 N University Ave STE 200 Little Rock, AR 72207-6360
- Healthy Connections - West Central | 4511 John Barrow Rd Little Rock, AR 72204
- Healthy Connections, Inc.-Franklin | 1701 S Harrison St Little Rock, AR 72204-2752

JEFFERSON COMPREHENSIVE CARE SYSTEM, INC.

- College Station Clinic | 4206 Frazier Pike Little Rock, AR 72206-9635
- Homeless Open Hands | 3000 Springer Blvd STE B Little Rock, AR 72206-3314
- Little Rock CHC | 1100 N University Ave STE 125 Little Rock, AR 72207-6356
- North Little Rock Community Health Center | 2525 Willow St STE 1 North Little Rock, AR 72114-2213

MAINLINE HEALTH SYSTEMS INC

- East End Intermediate School Health Center | 5205 W Sawmill Rd Little Rock, AR 72206-9063