

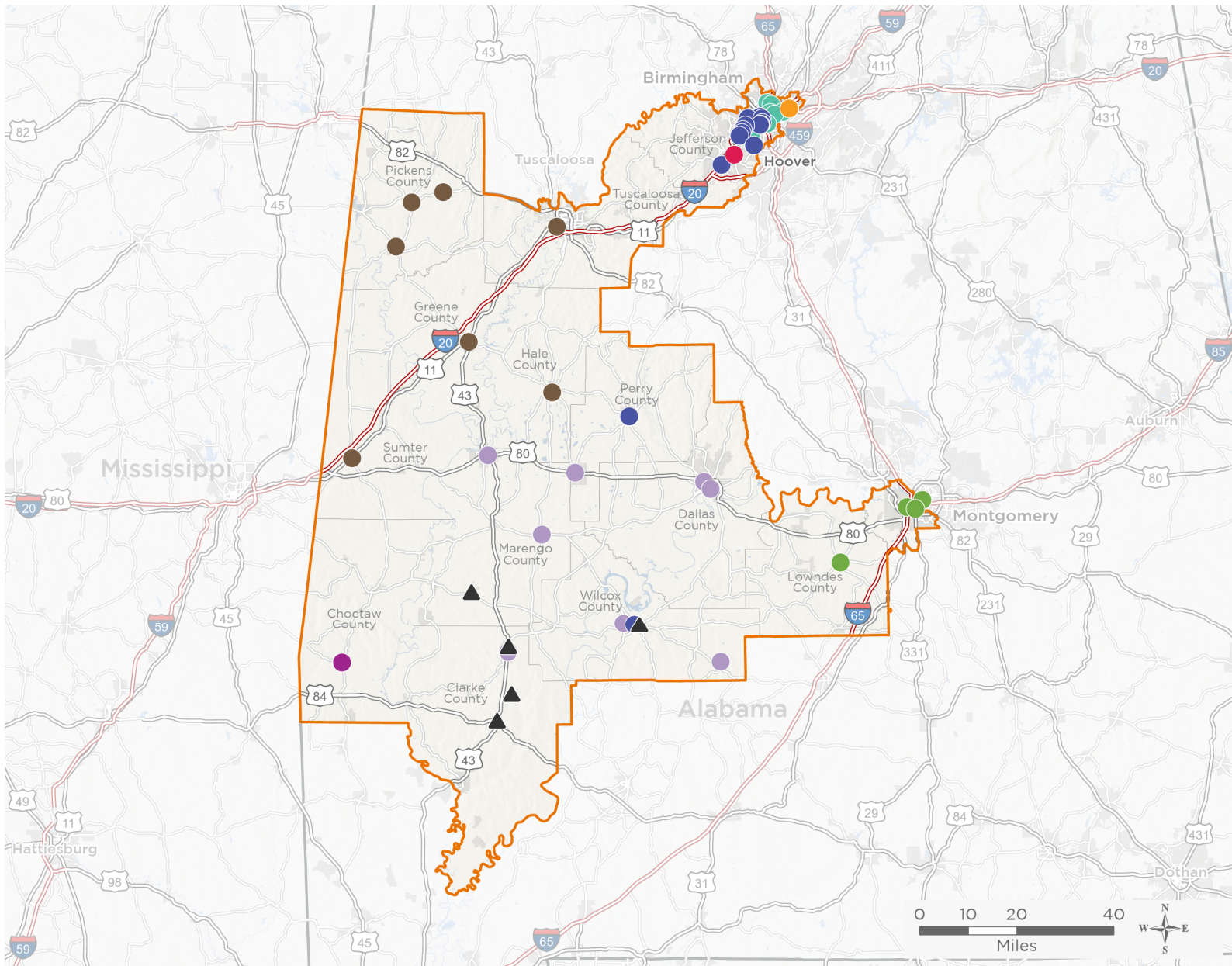


NATIONAL ASSOCIATION OF
Community Health Centers

Representative Terri Sewell 118th United States Congress

Alabama's **7TH** Congressional District

The 8 federally-funded health center organizations with a presence in Alabama's 7th Congressional District leverage **\$42,703,956** in federal investments to serve **156,894** patients.



55

**NUMBER OF DELIVERY SITES
IN CONGRESSIONAL DISTRICT**

- ● ● ● Federally-funded Delivery Site (each color represents one organization)
- ▲ Health Center Program Look-Alikes
- ▭ 118th Congressional District Boundaries
- ▭ County Boundaries
- ▭ Populated Places
- ▭ Interstates
- ▭ Highways
- ▭ Major Roads

Notes | Delivery sites represent locations of organizations funded by the federal Health Center Program. Health Center Program Look-Alikes are community-based health care providers that meet the requirements of the HRSA Health Center Program, but do not receive Health Center Program funding. Some locations may overlap due to scale or may otherwise not be visible when mapped. Federal investments represent the total funding from the federal Health Center Program to grantees with a presence in the state in 2021.

Sources | Federally-Funded Delivery Site Locations and Health Center Program Look-Alikes: data.HRSA.gov, December 2022.
Health Center Patients and Federal Funding | 2021 Uniform Data System, Bureau of Primary Health Care, HRSA.

© National Association of Community Health Centers, 2023. For more information, please contact federalaffairs@nachc.org.



55

NUMBER OF DELIVERY SITES IN CONGRESSIONAL DISTRICT

(main organization in bold)

ALABAMA REGIONAL MEDICAL SERVICES

- ARMS Carver Health Center | 3900 24th St N Birmingham, AL 35207-2614
- ARMS Green Acres Health Center | 1220 67th Street Ensley Birmingham, AL 35228-1430
- ARMS Northern Health Center | 2817 30th Ave N Birmingham, AL 35207-4541
- ARMS Wenonah Health Center | 2800 Wilson Rd SW Birmingham, AL 35221-1303
- Brown Elementary School | 4811 Court J Birmingham, AL 35208-1720
- Ensley Health Center | 417 19th Street Ensley Birmingham, AL 35218-1601
- Hayes K-8 Elementary School | 505 43rd St N Birmingham, AL 35222-1417
- Metro Health Center | 712 25th St N Birmingham, AL 35203-2400
- Mobile Health Unit | 712 25th St N Birmingham, AL 35203-2400
- Northside Dental | 1333 19th St N Birmingham, AL 35234-2512
- Washington K-8 School | 115 4th Ave S Birmingham, AL 35205-3023

ALETHEIA HOUSE, INC.

- Bessemer | 2201 Arlington Ave Bessemer, AL 35020-4299
- Mobile Health Unit | 2201 Arlington Ave Bessemer, AL 35020-4299

CAHABA MEDICAL CARE

- Cahaba Medical Care - Ability Clinic | 200 Oslo Cir Birmingham, AL 35211
- Cahaba Medical Care - Bessemer | 975 9th Ave SW, Ste 310 Bessemer, AL 35022-7839
- Cahaba Medical Care - Birmingham Dental Office | 623 8th Ave W Birmingham, AL 35204-3604
- Cahaba Medical Care - Birmingham Southern | 900 Arkadelphia Rd Birmingham, AL 35254
- Cahaba Medical Care - Camden | 321 Whiskey Run Rd Camden, AL 36726-2303
- Cahaba Medical Care - CJ Donald Elementary | 715 Valley Rd Fairfield, AL 35064-2666
- Cahaba Medical Care - Ensley Office | 1925 Avenue E Birmingham, AL 35218-1619
- Cahaba Medical Care - Fairfield | 6900 Grasselli Rd Fairfield, AL 35064-2423
- Cahaba Medical Care - Glen Oaks Elementary | 1301 Highland Dr Fairfield, AL 35064-1643
- Cahaba Medical Care - Hemphill Elementary | 714 12th St SW Birmingham, AL 35211-1982
- Cahaba Medical Care - Marion Office | 1303 Washington St Marion, AL 36756-3217
- Cahaba Medical Care - Princeton | 801 Princeton Ave SW, Ste 505 Birmingham, AL 35211-1308
- Cahaba Medical Care - Robinson Elementary | 301 61st St Fairfield, AL 35064-1900
- Cahaba Medical Care - West End Office | 1308 Tuscaloosa Ave SW Birmingham, AL 35211-1948

CHRIST HEALTH CENTER, INC.

- CHC - Woodlawn | 5720 1st Ave S Birmingham, AL 35212-2522
- Christ Health Center Mobile Medical and Dental Unit #1 | 5720 1st Ave S Birmingham, AL 35212-2522
- Christ Health Center, Inc. - Live Oaks | 5804 1st Ave S Birmingham, AL 35212-2524



55

NUMBER OF DELIVERY SITES IN CONGRESSIONAL DISTRICT

(main organization in bold)

FRANKLIN PRIMARY HEALTH CENTER, INC.

Gilberttown Medical/Dental Center | 140 Front St STE 4 Gilberttown, AL 36908-5510

HEALTH SERVICES, (INC)

Bellingrath School Based Health Center | 3550 S Court St Montgomery, AL 36105-2102

Hayneville Family Health Center | 511 E Tuskeena St Hayneville, AL 36040-2666

Health Services, Inc. Community Outreach Unit | 3058 Mobile Hwy Montgomery, AL 36108-4027

Montgomery Primary Healthcare Center | 3058 Mobile Hwy Montgomery, AL 36108-4027

River Region Health Center | 1845 Cherry St Montgomery, AL 36107-2613

River Region Mobile Unit | 1845 Cherry St Montgomery, AL 36107-2613

RURAL HEALTH MEDICAL PROGRAM, INC.

Dallas County Health Center | 228 Selma Ave Selma, AL 36701-5825

Demopolis Health Center | 1502 US Highway 80 E Demopolis, AL 36732-2200

Marion Health Center | 1310 Washington St Marion, AL 36756-3218

Pine Apple Health Center | 867 County Road 59 Pine Apple, AL 36768-3525

RHMPI Selma Mobile Unit Health Center | 101 Park Pl Selma, AL 36701-6764

Thomaston Health Center | 111 Main St Thomaston, AL 36783-3137

Thomasville Health Center | 411 Wilson Ave W Thomasville, AL 36784-2015

Uniontown Health Center | 330 Old Hamburg Rd Uniontown, AL 36786-2614

Yellow Bluff-Camden Health Center | 2210 Highway 221 Camden, AL 36726-4233

WHATLEY HEALTH SERVICES INC

Aliceville Health and Wellness Center | 417 3rd St SE Aliceville, AL 35442-2799

LaBridgette R. Ellis Medical and Dental Center | 800 Hall St Greensboro, AL 36744-2517

Maude L. Whatley Health Center | 2731 MI King Jr Blvd Tuscaloosa, AL 35401-5235

Mobile Health Unit | 2731 MI King Jr Blvd Tuscaloosa, AL 35401-5235

Pickens County Family Practice Center | 27340 Highway 86 Gordo, AL 35466-3578

Sumter County Health Center | 415 Derby Dr York, AL 36925-2117

Theodore Hendrix Dental Center | 2731 MI King Jr Blvd Tuscaloosa, AL 35401-5235

Whatley Health Services @ Eutaw | 200 Morrow Ave Eutaw, AL 35462-1106

Whatley Health Services at Carrollton | 376 Commerce Ave Carrollton, AL 35447-2253

HEALTH CENTER PROGRAM LOOK-ALIKES

Health Center Program Look-Alikes are community-based health care providers that meet the requirements of the HRSA Health Center Program, but do not receive Health Center Program funding.

PHYSICIANS CARE OF CLARKE

Fulton Family Medical | 218 Main St Fulton, AL 36446

Physicians Care of Camden | 24B Camden Byp Camden, AL 36726-1770



NATIONAL ASSOCIATION OF
Community Health Centers

Representative Terri Sewell
118th United States Congress

Alabama's **7TH** Congressional District

55

**NUMBER OF DELIVERY SITES IN
CONGRESSIONAL DISTRICT**

(main organization in bold)

▲ HEALTH CENTER PROGRAM LOOK-ALIKES

Health Center Program Look-Alikes are community-based health care providers that meet the requirements of the HRSA Health Center Program, but do not receive Health Center Program funding.

PHYSICIANS CARE OF CLARKE

Physicians Care of Grove Hill | 127 Clark St Ste C Grove Hill, AL 36451-3050

Physicians Care of Sweet Water | 31431 AL Highway 10 Sweet Water, AL 36782-4941

Physicians Care of Thomasville | 33621 Highway 43 Thomasville, AL 36784-3310