



EVIDENCE-BASED CARE



ACTION STEPS

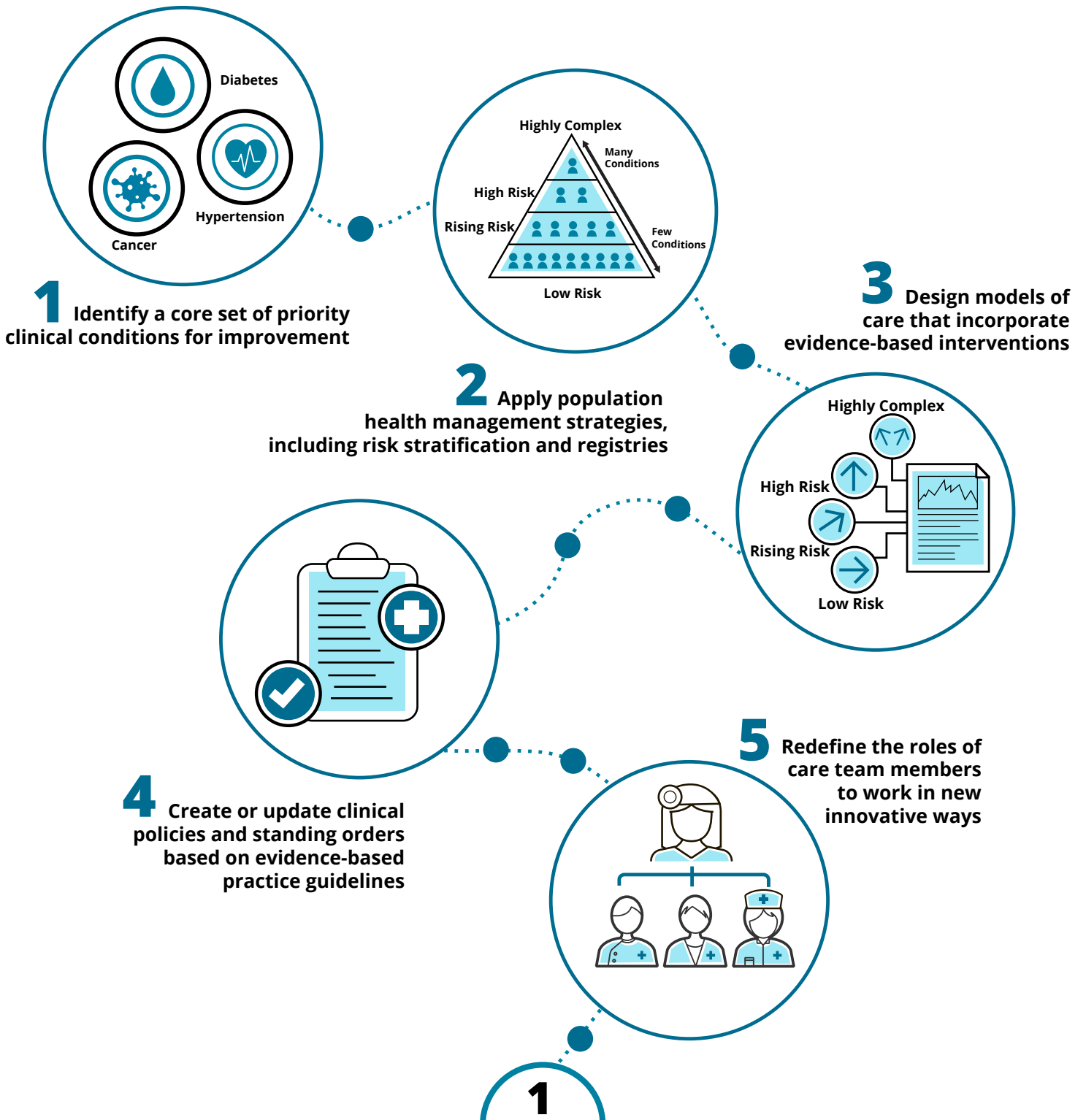


WHAT?

Nesting clinical care improvements within system improvements.

WHY?

Performance on key clinical conditions can improve when evidence-based, condition-specific interventions are combined with evidence-based, systems-level interventions.

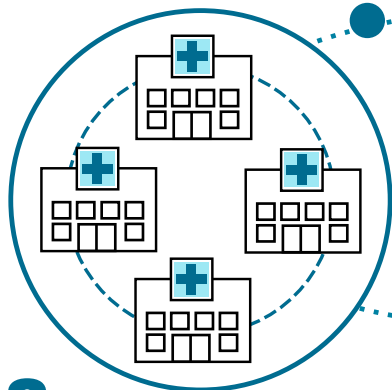


2

6 Create or update EHR templates to capture data on screening UDS and other measures

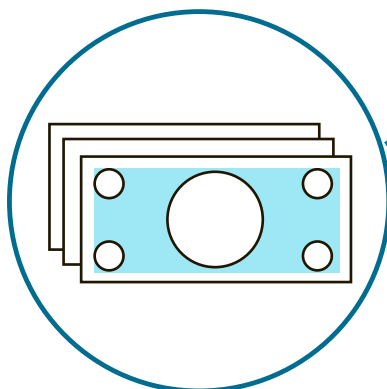
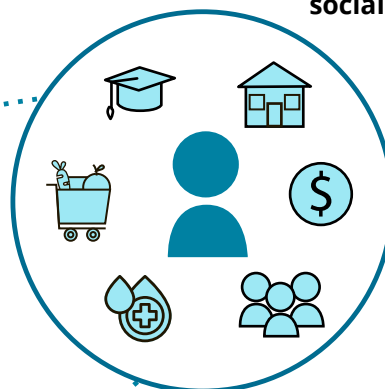


7 Establish systems to use patient engagement tools and support patient self-management and shared decision-making



8 Create a list of community partnerships and referral processes with them to support patient needs

9 Tailor treatment for social context



10 Collect reimbursement for all evidence-based care and services

● Infrastructure ● Care Delivery ● People