



# CARE TEAMS



## ACTION STEPS



### WHAT?

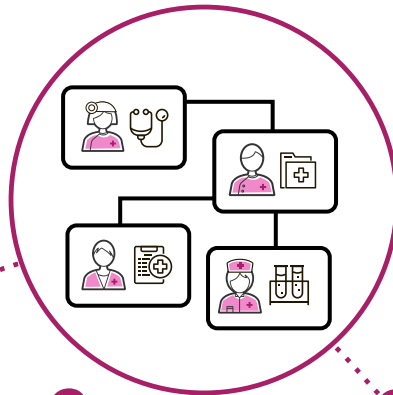
Distributing responsibility and accountability for patient care and outcomes across a diverse team of staff.

### WHY?

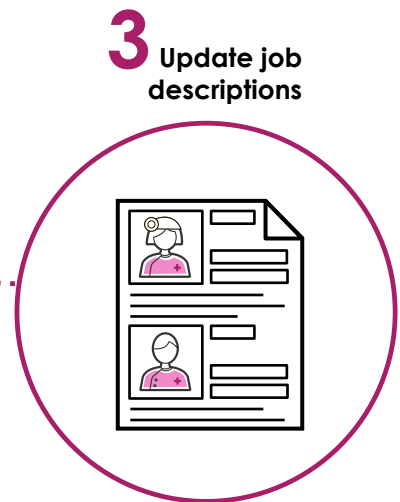
The "care team model" has been shown to deliver high-quality, low-cost, impactful health care. Effective use of robust care teams can also decrease provider burnout.



**1** Define care standards



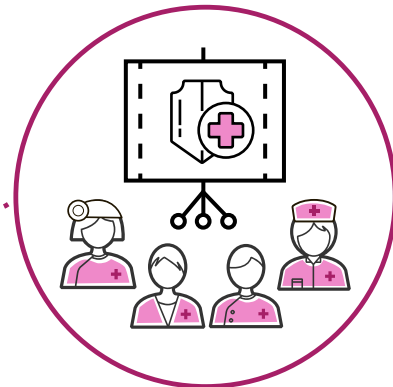
**2** Distribute tasks to meet standards and document workflow



**3** Update job descriptions



**5** Monitor task performance in dashboards



**4** Train staff



**6** Hardwire accountability into personnel systems and performance reviews



**7** Educate patients on redesigned care team

● Infrastructure ● Care Delivery ● People