



# 2022 Virtual Membership Committee Meeting

March 3, 2022 | 3:30 – 5:30 pm EST



# THE NACHC MISSION

## America's Voice for Community Health Care

The National Association of Community Health Centers (NACHC) was founded in 1971 to promote efficient, high quality, comprehensive health care that is accessible, culturally and linguistically competent, community directed, and patient centered for all.



# Committee Rules & Responsibilities

**"Cultivating winning relationships happens one conversation at a time."**

**- Morag Barrett**

[www.MoragBarrett.com](http://www.MoragBarrett.com)

- Review progress on the Chair's Initiative as well as current membership status and recruitment and retention activities as measured by the Membership R/R Plan.
- Assess current benefit package and help identify potential new incentive benefits designed to increase and retain membership.
- Serve as active membership representatives in their respective states and regions, to include cultivating personal relationships with prospective members followed by referral to the membership department for active recruitment.

# Membership Progress & Statistics



# Legislative Successes in 2020

## Federal Funding available to health centers

- **\$100 million** – for COVID-19 prevention, preparedness and response
- **\$1.32 billion** – for detection and/or prevention, diagnosis, and treatment of COVID-19
- **\$600 million** – for COVID-19 testing
- **\$175 billion pool** (in the Paycheck Protection Program for providers with less than 500 employees) for care related expenses or lost revenue attributable to COVID-19
- **\$200 million pool** for certain providers, including health centers – for telecommunications and other information services and equipment

**Private Funding - \$30 million** made available to health centers under various criteria by NACHC partners, including Direct Relief, TD Bank, Centene, Siemens, and Pfizer



# Legislative Successes in 2021

The **American Rescue Plan Act** included the following support for Community Health Centers and workforce programs:

- **\$7.6 billion** for health centers, as defined by Section 330 and the Social Security Administration, including Look-A-Likes
- **\$800 million** for the National Health Service Corps
- **\$200 million** for Nurse Corps Loan Repayment Program
- **\$330 million** for the Teaching Health Center program to increase the Per Resident Amount and expand the number of sites.



## American Rescue Plan Update:

\$1 Billion in capital & infrastructure funding awards announced in 2021\*

*\*Applies to 330 Grantees Only*



# Advocacy Update

## House LHHS-Ed Appropriations Subcommittee Releases FY22 (Annual) CHC Discretionary Funding Proposal And Earmarks

- **\$1.8 billion** proposed in CHC funding, an increase of \$148 million from FY21.
- Of this, **\$50 million** would go to school-based health centers (SBHCs), and **\$25 million** would establish the Alcee Hastings Cancer Screening Program.

## Reps. Spanberger and McKinley Introduce the PROTECT 340B Act

NACHC worked closely with Reps. Spanberger (D-VA) and McKinley (R-WV) who [introduced](#) the Preserving Rules Ordered for the Entities Covered Through **(PROTECT) 340B Act** which would combat discriminatory 340B reimbursement policies against CHCs. The bill will:

- Prohibit health insurers and PBMs from paying below market rates, engage in discriminatory contract pricing
- Create a “clearinghouse” administered by a third-party entity to collect data to prevent duplicate discounts

## Senate Democrats Aim to Introduce Bipartisan Infrastructure Bill and Budget Resolution Before August Recess

Senate Majority Leader Chuck Schumer (D-NY) has said Senators are close to finalizing the partisan budget resolution and turning the [\\$1.2 trillion bipartisan infrastructure framework](#) into legislation.

**HEALTH CENTER Advocacy Network** About Contact Us TAKE ACTION Advocacy Programs Advocacy Tools Sea un Defensor Blog

### Take Action

Below are pressing issues that impact the future of health centers. Contact your Members of Congress today!

**29 million patients count on our care. Contact your Members of Congress TODAY to ensure Community Health Centers remain a congressional priority.**

Here is a quick reminder of the ways you and your members of Congress can get involved in the effort to support health centers:

**Ways That Members of Congress Can Get Involved:**

- o Tweet/Post on social media public support for health centers
- o Write an OP-ed for a local or national news outlet.

**Ways That YOU can get involved:**

- o Email your Members of Congress
- o Tweet/ post on Social Media using #ValueCHCs and tag your Members of Congress
- o Write a Letter to the Editor or an Op-ed for a local or national news outlet

**Take Action Today**

**EMAIL YOUR MEMBER OF CONGRESS!**

-- Select --

First Name\*

Last Name\*

Email Address\*

Address\*

Suite / Apt.

City\*

# Advocacy Update

Health Center Advocates Successfully Advocated for Increased Investment in the Build Back Better Act which was passed by the House of Representatives in 2021.

- **\$2 Billion** for CHC modernization and construction project (double the original \$1 billion);
- **\$3.37 Billion** for Teaching Health Centers Graduate Medical Education program;
- **\$2 Billion** for National Health Service Corps; and
- **\$500 Million** for Nurse Corps.

## Capital & Workforce Advocacy

Support \$10 billion in capital funding for Community Health Centers and \$6.3 billion in primary care workforce program funding in the Build Back Better Act. The funding is vital for the construction and modernization of Community Health Centers and a primary care workforce pipeline to alleviate the chronic clinician shortages.



**CHCs HAVE  
MORE PATIENTS  
THAN SPACE  
TO SERVE  
THEM.**

Tell Congress to support Community Health Center infrastructure funding.





# Membership Update

Membership Type	Members as of February 24, 2022
Organizational Members	789
Corporate Members	41
HCCN Members	26
Associate Members	31
Full, Basic & Student Individual Members	809
Lifetime Members	393

**789 of the 1,385** eligible FQHCs are Organizational Members of NACHC

**24 FQHCs** became Organizational Members of NACHC since the start of the 2021-2022 Membership Year

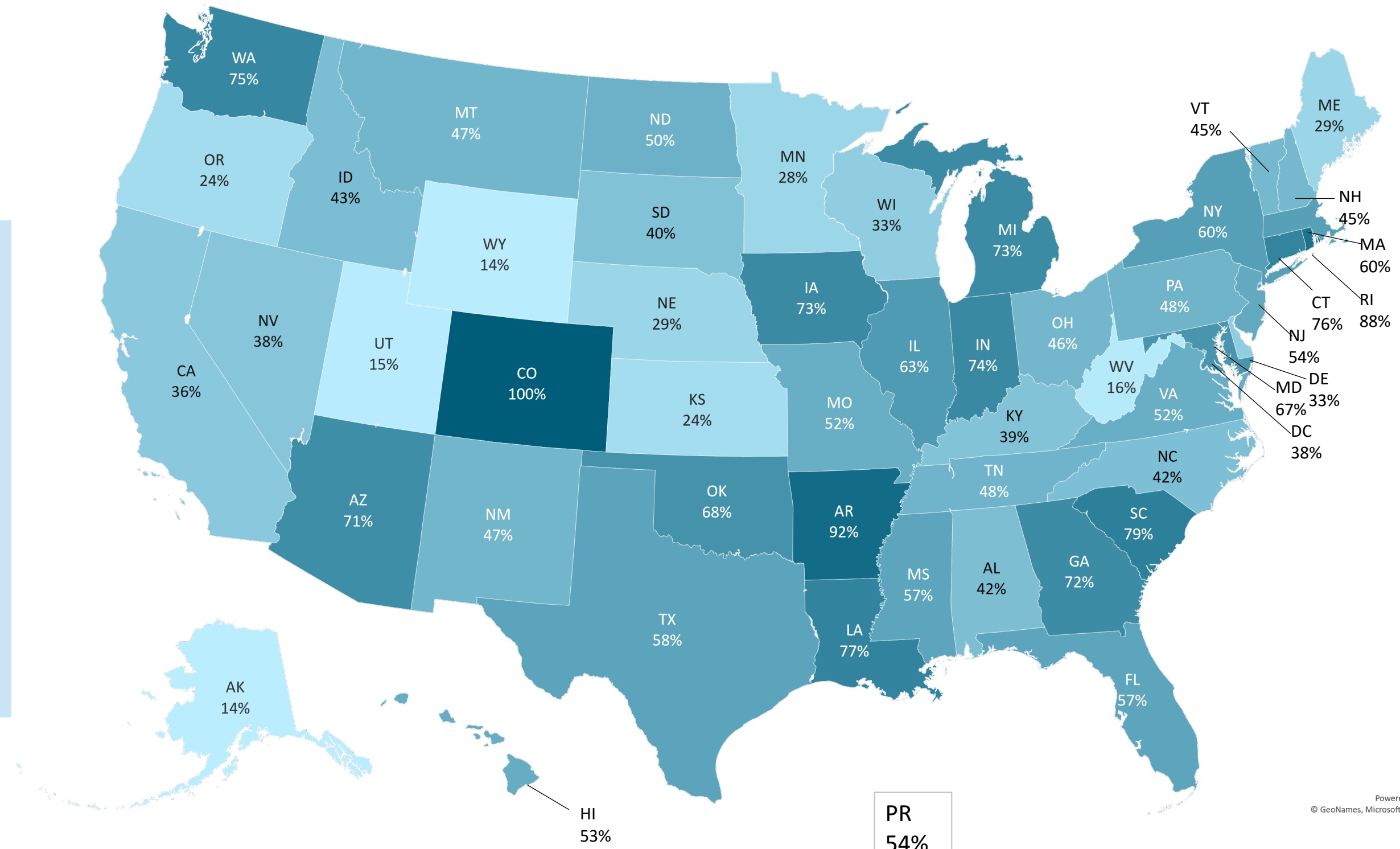
\* 31 Organizational Members, and 27 Corporate Members were suspended February 24, 2022 for nonpayment of the 2021-2022 Membership dues.

# Organizational Membership

% of FQHC Membership Participation by State

## High Ranking Membership Rates:

- Colorado – 100%
- Arkansas – 92%
- Rhode Island – 88%
- South Carolina – 79%
- Louisiana – 77%
- Connecticut – 76%
- Washington – 75%
- Indiana – 74%



Powered by Bing  
© GeoNames, Microsoft, TomTom



# Organizational Membership

## Inside the Numbers

**\$18,000**

Average Annual  
Organizational  
Membership Dues

**80%**

Of FQHCs are  
current or former  
NACHC members

**50%**

Of the 2015 funded  
FQHCs have become  
NACHC Members

**12**

States have over  
70% Membership

**83%**

Of NACHC  
Members are at  
the dues cap

**\$14,796,155**

Membership Dues  
Collection total from  
2020-2021 Year

**96%**

Membership  
Retention for 2020-  
2021 Membership  
Year

**32%**

Of Members have  
been NACHC  
Members for 20+  
Years

**15**

States have less  
than 40%  
Membership

**79%**

Of FQHCs with  
budgets of \$40  
Million or more are  
NACHC Members

# New Members (Since July 2021)

## ORGANIZATIONAL MEMBERS

- Peninsula Community Health Services of Alaska (AK)
- Families Together of Orange County (CA)
- Colorado Coalition for the Homeless (CO)
- Uncompahgre Medical Center (CO)
- High Plains Community Health Center (CO)
- Northwest Colorado Health (CO)
- Sheridan Health Services (CO)
- Marillac Clinic, Inc. (CO)
- Axis Health System (CO)
- Inner City Health Center (CO)
- Promise Healthcare (IL)
- Muskegon Family Care (MI)
- Kagman Community Health Center (MP)
- Coastal Family Health Center (MS)
- Kintegra Health (NC)
- Neighborhood Health Services Corp. (NJ)
- Circle Health Services (OH)
- City of Cincinnati Primary Care/Cincinnati Health Department (OH)
- Family Health Services (OH)
- Asher Community Health Center (OR)
- Start Community Health, Inc. (PA)
- LCH Health & Community (PA)
- La Clinica De Los Campesinos, Inc. (WI)



# New Members (Since July 2021)

## ASSOCIATE MEMBERS

- Community Mental Health Center, Inc. (IN)
- FW Black Collective (WA)
- National Nurse-Led Care Consortium (PA)
- Promise Fund of Florida (FL)
- Carey Counseling Center, Inc. (TN)
- CareMessage (CA)
- American Academy of Dermatology (IL)

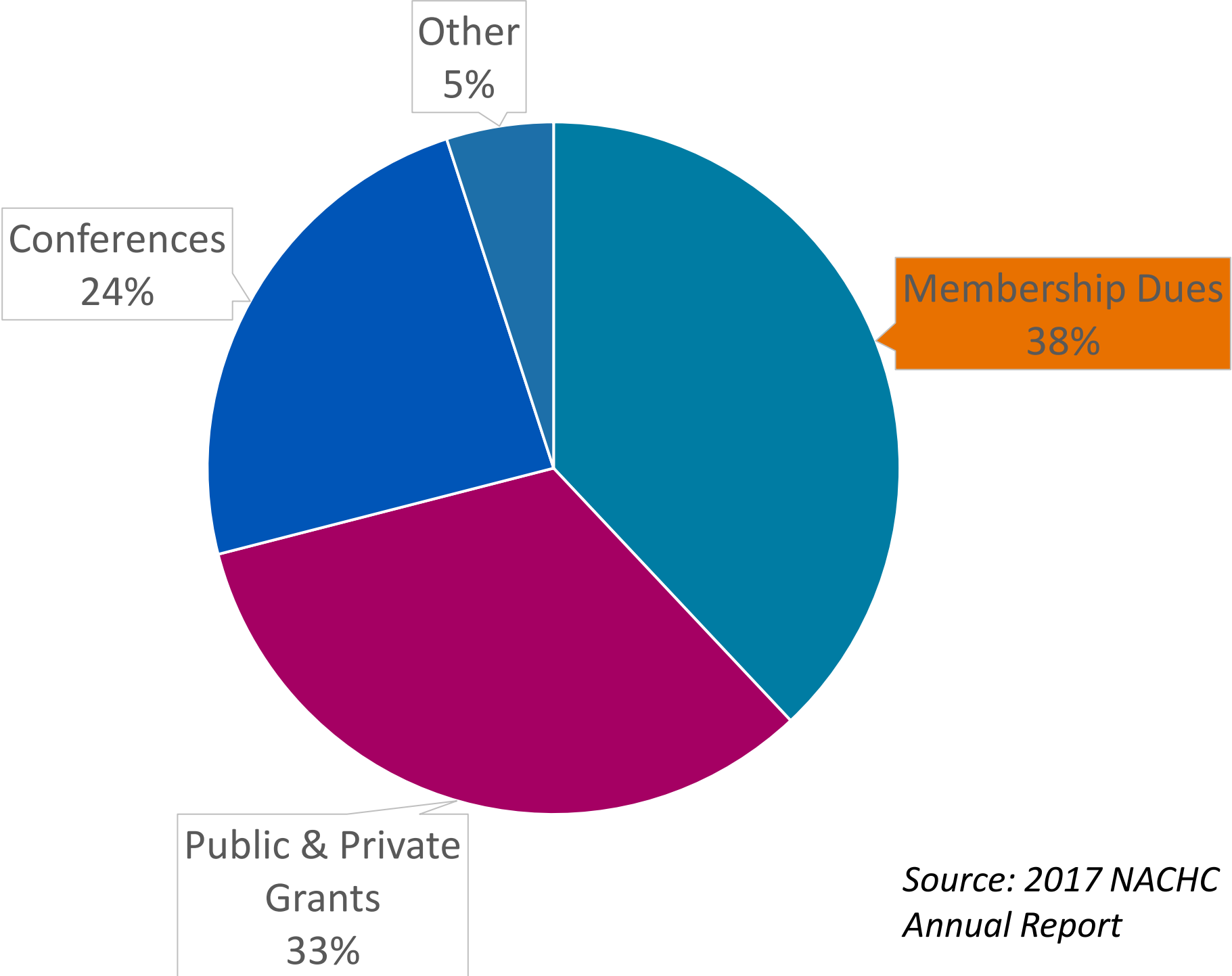
## CORPORATE MEMBERS

- ReCept Health Care Services (TX)
- Circulo Health (OH)
- Pair Team (CA)
- EqualizeRCM Services (TX)
- Maxor 340B (TX)
- The Hilb Group (MA)
- FQHC 340B Compliance (TN)
- POS Professional Office Services, Inc. (IA)
- Vigilance Health (CA)
- VerityStream (CO)
- Waystar (KY)

# Membership Revenue Update

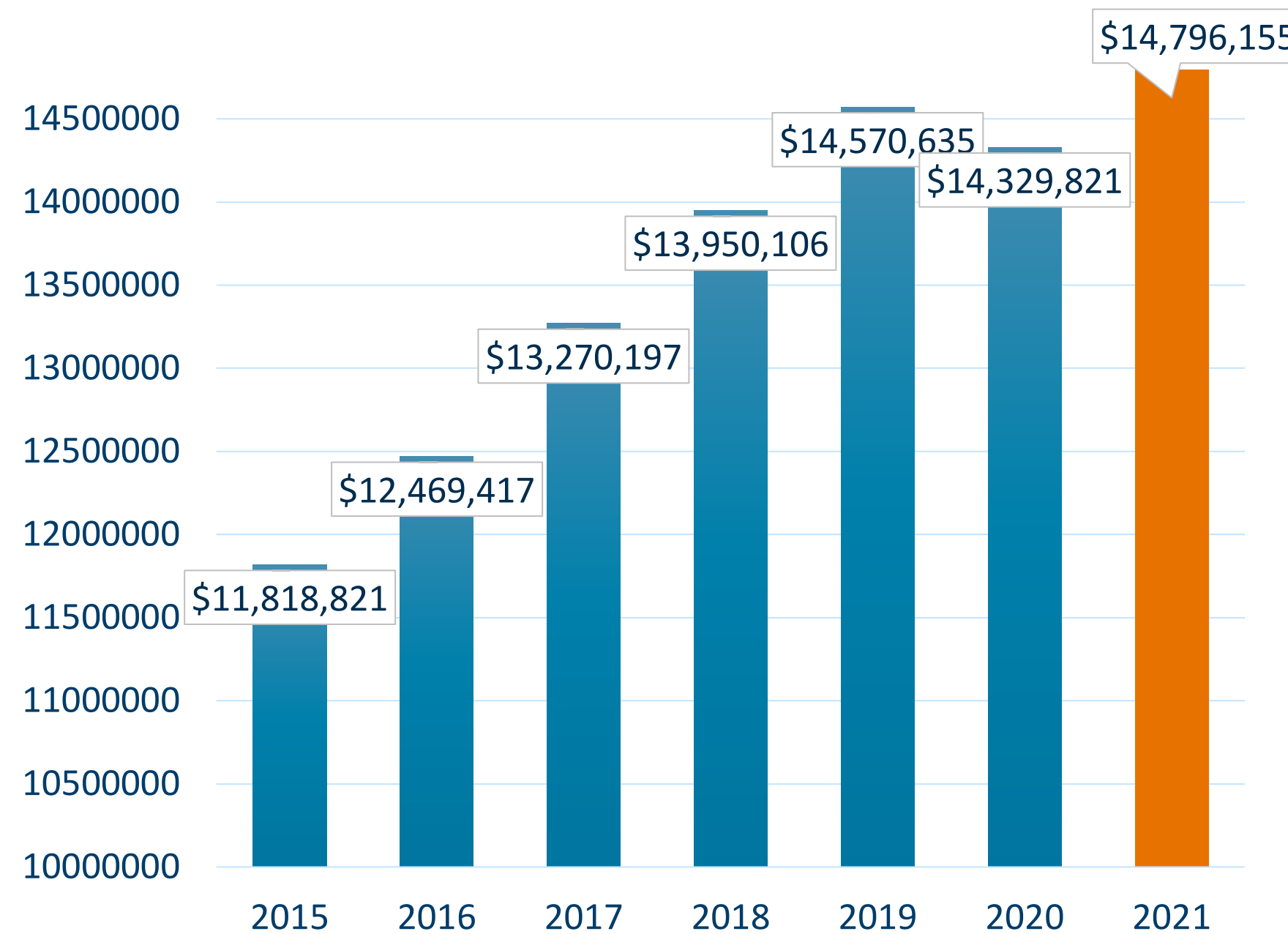


# Membership's Impact on NACHC Revenue



Source: 2017 NACHC Annual Report

# Membership's Revenue Growth Over the Years

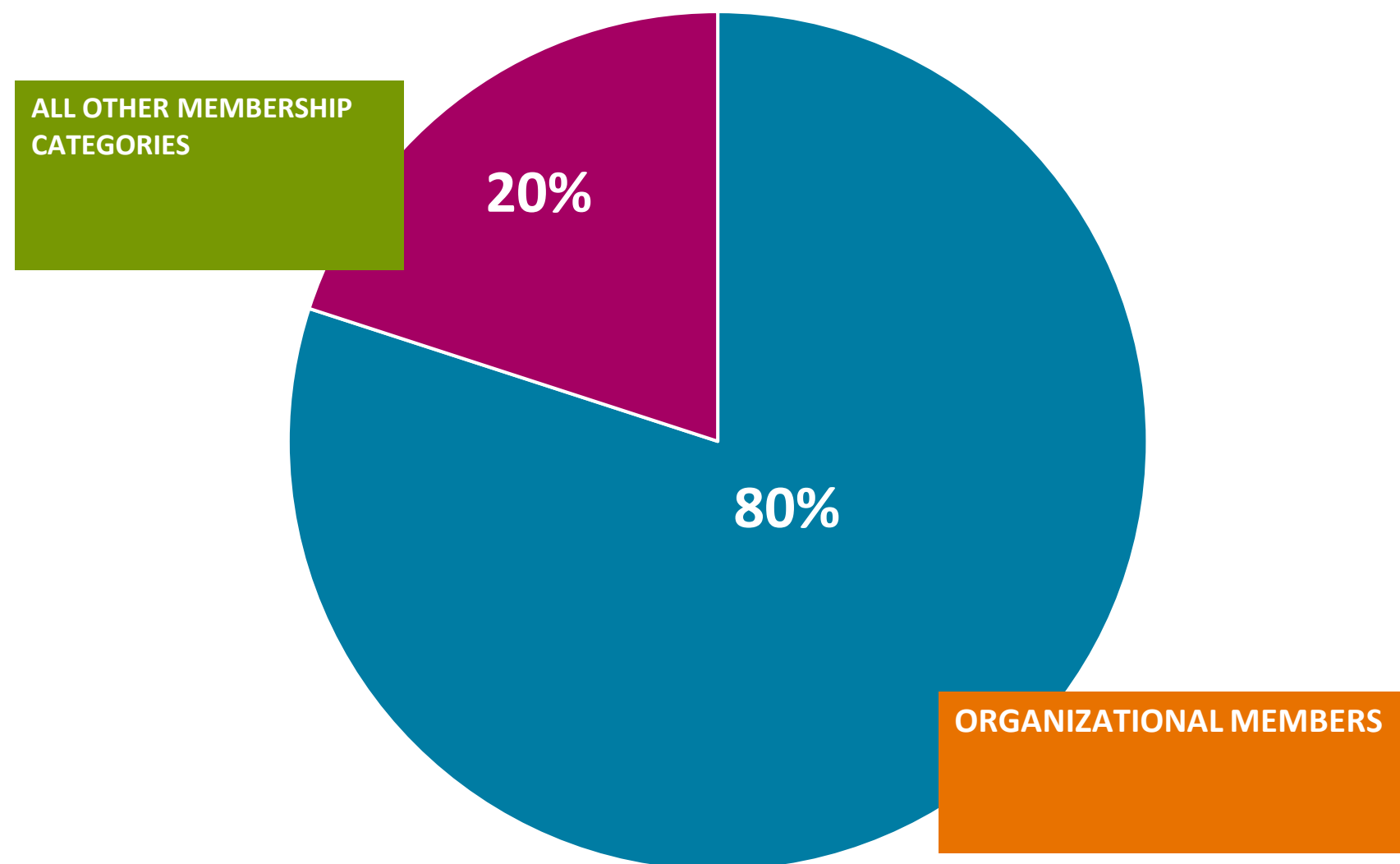


Source: FY Collected Dues, February 23, 2022



# Membership Types by Revenue

Annual Membership Revenue



## Growth Opportunities



Universities



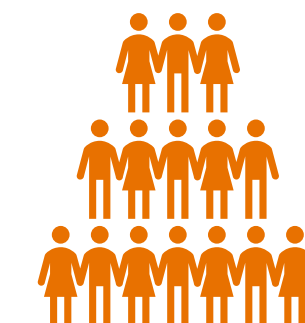
Additional Partnerships



Organizational Non-Members



Student Members



Individual Members

# Membership Categories & Benefits

# Organizational Membership

DUES  
Max  
\$20K

Open to public or non-profit health centers that provide comprehensive primary health care services; are governed by a representative, consumer majority board of directors; and are committed to the mission and goals of NACHC.





# Associate Membership

DUES  
\$750

Associate Membership is open to any **non-profit primary health care organizations** that are not eligible for Organizational Membership but support the mission and goals of NACHC.

## Associate Members could be:

- Health Care Associations
- Churches
- Schools & Universities
- Public Health Departments

## 8 OTHER NTTAPS ARE ASSOCIATE MEMBERS



# Health Center Controlled Network (HCCN) Membership

**DUES**  
\$2,500 - \$5,000

Health Center Controlled Network (HCCN) Membership is open to **any health center controlled network entity** that supports the goals and mission of NACHC.

**HCCNs ARE  
COMPRISED  
OF AND RUN  
BY FQHCS**

**HCCN's Benefit from:**

- Group purchasing power
- Shared training
- Data analytics to support quality measurement and improvement

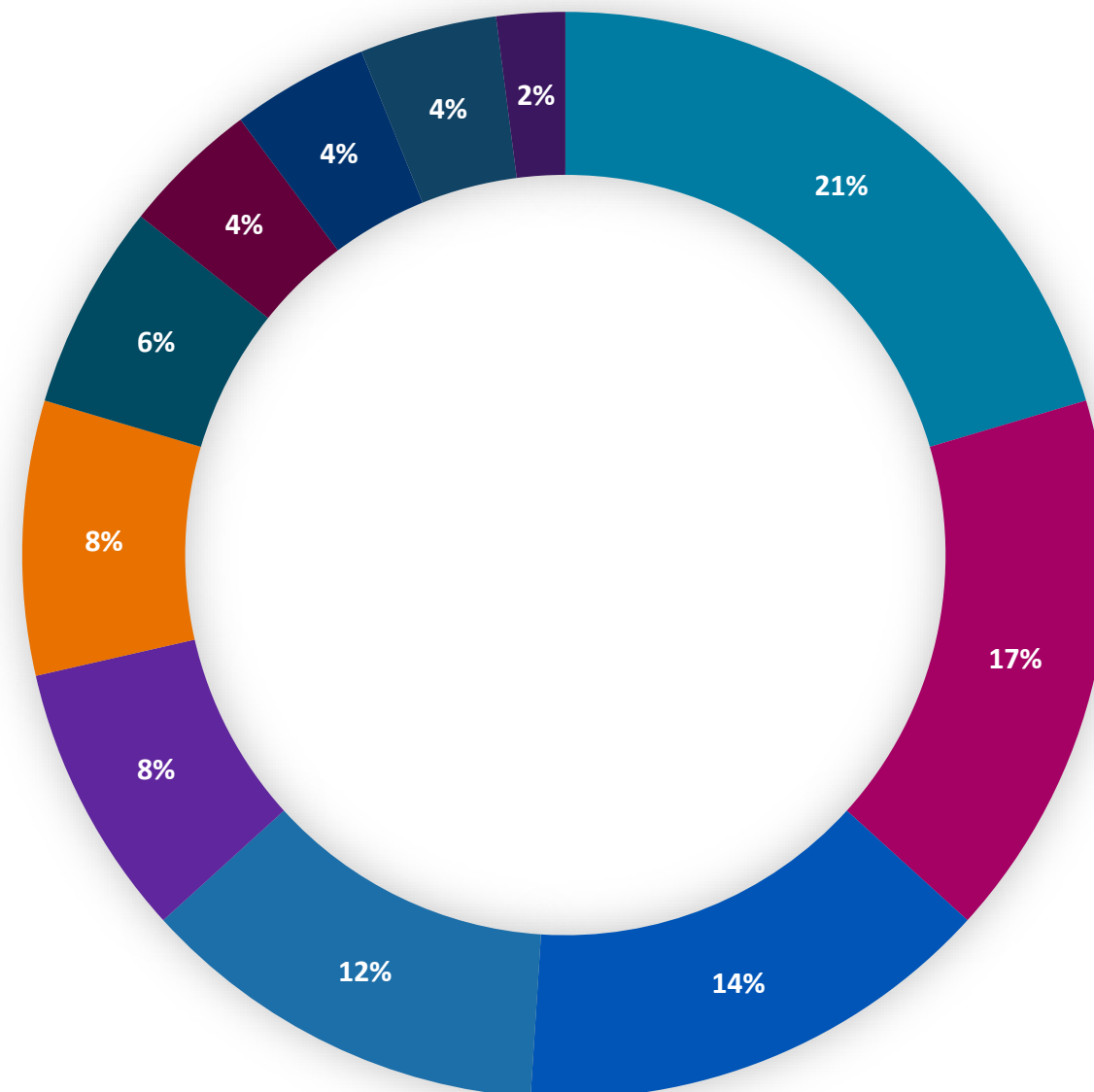


# Corporate Membership

**DUES**  
**\$7,500**

Corporate Membership is open to **for-profit organizations that provide services and products** to primary health care programs and that support the mission and goals of NACHC.

Corporate Members By Business Type



- Information Technology Solutions
- Accounting, Finance, Tax & Billing
- Health Insurance Solutions | Managed Care
- 340B Solutions
- Pharmaceutical | Medical
- Staffing | Workforce | Recruitment
- Ancillary Solutions
- Dental Products & Distribution
- Health Care Consulting
- Medical Supply Distribution





# Individual Membership



Individual Membership is open to individuals who support the mission and goals of NACHC.

## Lifetime Individual

- Free subscription to Washington Update
- Free subscription to the *Community Health Forum* Magazine
- Eligible for tuition discounts\*
- Eligible to participate on NACHC Committees\*
- Lifetime Member Celebratory Pin

**DUES**  
**\$325**  
(one-time)

## Full Individual

- Free subscription to Washington Update
- Free subscription to the *Community Health Forum* Magazine
- Eligible for tuition discounts\*
- Eligible to participate on NACHC Committees\*

**DUES**  
**\$65**

## Basic Individual

- Free subscription to Washington Update
- Eligible for tuition discounts\*
- Eligible to participate on NACHC Committees\*

**DUES**  
**\$30**

## College Health Professionals

- Free subscription to Washington Update
- Gain Access to Searchable Database on NACHC's Job Board

**DUES**  
**FREE!**

# Membership Outreach

## Prospect Calls & Meetings!



## Dues Reminders!

Friendly reminder of overdue or lapsed dues

NACHC Dues Reminder - Your Membership May Lapse!

MS Michelle Shiel  
To: Michelle Shiel  
Cc: Maurice Denis

Dear Health Center Colleague,

Thank you for your NACHC Organizational membership and ongoing support! We hope you've been able to take full advantage of the wealth of membership benefits and resources available to you and your health center team. If you would like a refresher on [Membership Benefits](#), [Training](#), [Webinar recordings](#), [COVID-19 Resources](#), [Finance Office Hours](#), and [Advocacy \(\\$6 Billion for FQHCs in the American Rescue Plan!\)](#) and other tools that NACHC offers, we are happy to schedule a call at your convenience.

In reviewing your member record, I noticed that **your organization has not made its membership dues payment and is in jeopardy of losing its Organizational Membership**. Realizing this may be an oversight, I am sending this courtesy reminder. *(Reply to this email if you need a copy of the most recent dues notice.)*

NACHC realizes that it is because of dedicated members such as you and your organization that our efforts on your behalf are successful. We value your show of support and solidarity with all health centers by continuing your NACHC membership.

Please contact us at your earliest convenience to maintain your membership or address any questions you may have about your membership. I look forward to hearing from you and to the continuation of our partnership.

Thank you,  
Michelle

## New CEO Welcome!

Congratulations on being named CEO of Southwest CARE Center! [334031]

Daryl Northrop  
To: 'madams@southwestcare.com'

Dear Mr. Adams,

Congratulations on becoming the new CEO of Southwest CARE Center! As the new CEO, you are entrusted with providing effective leadership; while confronting the daily challenges of directing a community health center including staff development, grant applications, financial management, board relations, and staying abreast of legislative issues that directly impact the future of your center. **Please don't hesitate to utilize NACHC as a resource to support your professional transition and assist your health center in navigating today's complex and constantly changing health care environment.**

For nearly 50 years, NACHC have been dedicated to supporting health center operations and growth by not only continuing our strong tradition of successful advocacy; but also providing education, training and technical assistance. Moving forward, health centers will have a major role in the transformation of health care delivery; and NACHC is dedicated to advancing the best practices, technologies and workforce resources that will help reshape America's health system.

Created by and for America's health centers, NACHC has adapted to the changing needs of its members for over three decades – helping them to grow, develop and thrive as high-quality, cost-effective health care providers in America's underserved communities. Membership with NACHC links you to a wealth of [timely, effective resources](#), [Executive Coaching Services for Health Center Leadership](#), [NACHC Leadership Trainings Graduate Network](#), [member benefits](#); and connects you with a network of nearly 1400 community-based health centers across the country. NACHC membership entitles you, your staff and board members to take advantage of all our valuable member benefits, services, and group purchasing programs. **Please take a moment to review the many benefits of NACHC membership, including access to a full staff of professionals available to provide you with additional support.**

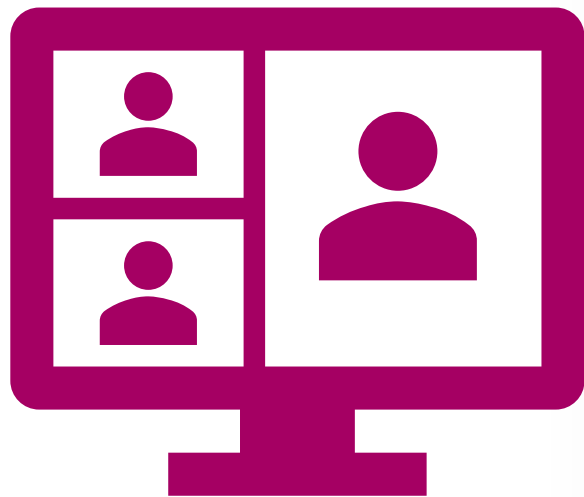
Be sure to visit these sites up-to date information and resources:

[NACHC's COVID-19 Resource Page](#): NACHC has curated FAQs relevant to health centers. Responses may include links to additional resources or the best-gathered information from subject matter experts.

[The NACHC Online Library COVID19 page](#): Check back for frequent updates! These resources are constantly evolving as circumstances change.

[The Health Center Resource Clearinghouse COVID 19 page](#): This resource brief provides a selection of current, high-quality resources about Novel

## New Member Orientations!



## Email. Email. Email!

Congratulations on your American Rescue Plan Award!

NM NACHC Membership <membership@nachc.org>  
To: Michelle Shiel

centers across the country

- [The CHC Store](#): Your first stop for all your PPE, health center branded apparel, giveaway items, hand sanitizer, and more. **NACHC Members receive 5% cash back on all orders!**

In addition to the resources listed above, [Organizational Membership](#) and board members to take full advantage of all our valuable member benefits, services, and group purchasing programs at a discounted rate or at times, no cost. Your engagement in NACHC are vital to sustaining and ensuring the best health policy. **We encourage you to make the most of your membership already made.**

With your support, and that of others who join NACHC as members, we can preserve, and expand the mission of community health centers. **Team-Up discount on your first year's annual dues!** If you have not yet joined, please reply to this email or contact us at [membership@nachc.org](#).

Again, congratulations on your American Rescue Plan Award!

Our Strength is Our Unity!

Sincerely,  
The NACHC Membership Team

[Become a Member Today!](#)

Award Grantee Congrats + Dues Discount CTA

CHCSTORE Promo/ Merch Sales

50th Anniversary 1971-2021 NACHC

theCHCstore.com  
A Promotional Merchandise Solution for Community Health Centers

Dear Health Center Leaders,

The ongoing mission of NACHC is dedicated to supporting and growing the Community Health Center movement (330 grantees and Look-A-Likes) not only through our strong tradition of advocacy; but also by providing Training, and Technical Assistance. We are committed to advancing the best practices, technologies, and workforce resources that will help reshape the health system. **Please do not hesitate to utilize NACHC as a resource to support your professional transition and assist your health center in navigating today's complex and constantly changing health care environment.**

Created by and for America's health centers, NACHC has adapted to the changing needs of its members for over three decades – helping them to grow, develop and thrive as high-quality, cost-effective health care providers in America's underserved communities. Membership with NACHC links you to a wealth of [timely, effective resources](#), [Executive Coaching Services for Health Center Leadership](#), [NACHC Leadership Trainings Graduate Network](#), [Member Benefits](#); and connects you with a network of nearly 1400 community-based health centers across the country. NACHC membership entitles you, your staff and board members to take advantage of all our valuable member benefits, services, and group purchasing programs. **Please take a moment to review the many benefits of NACHC membership, including access to a full staff of professionals available to provide you with additional support.**

- [Timely and Effective Resources](#) – Including [NACHC Leadership Trainings Graduate Network](#)
- [Executive Coaching Services for Health Center Leadership](#)
- [NACHC Leadership Trainings Graduate Network](#)
- [Member Benefits](#)
- [Conferences](#): Connecting you with a network of colleagues from across the country.
- [The CHC Store](#): Your first stop for all your PPE, health center branded apparel, giveaway items, hand-sanitizer, and more!

Be sure to visit these sites up-to-date information and resources:

UPCOMING: [NACHC Webinar for Health Center Program Look-A-Likes "Building Your Grants Management Infrastructure \(& Drawing Down Your ECT Funds\)"](#) Thursday, March 25, 2021 | 1:00 – 2:30 PM ET. [Registration is Free!](#)

[NACHC's COVID-19 Resource Page](#): NACHC has curated FAQs relevant to health centers. Responses may include links to additional resources or the best-gathered information from subject matter experts.

Good morning,  
The official invitation for the [Mask Up with NACHC GroupOrder](#) was sent yesterday. Due to the large number of potential participants, some health centers will be receiving the invitation today.

**GroupOrder**  
An Update from us on GroupOrder

Learn More About the Power of Membership

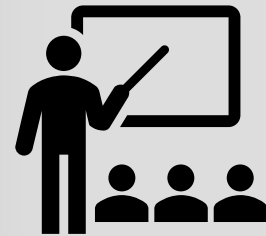
Look A Like Resources

# Benefits of Membership

**ADVOCACY**



**TRAINING &  
TECHNICAL  
ASSISTANCE**



**NETWORKING**



**PROFESSIONAL  
DEVELOPMENT**



[www.nachc.org](http://www.nachc.org)

**PUBLICATIONS &  
RESOURCES**

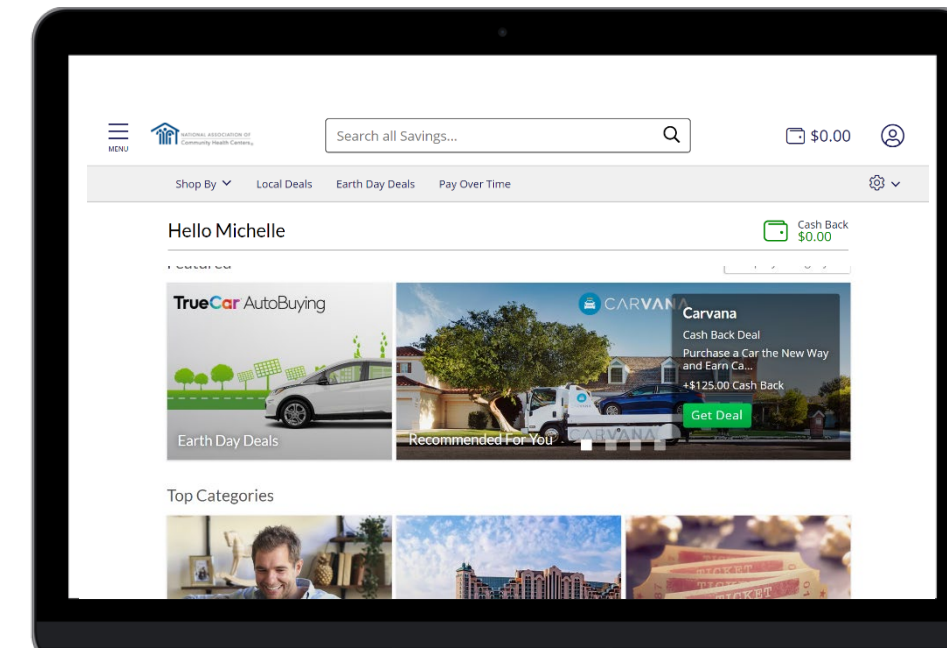
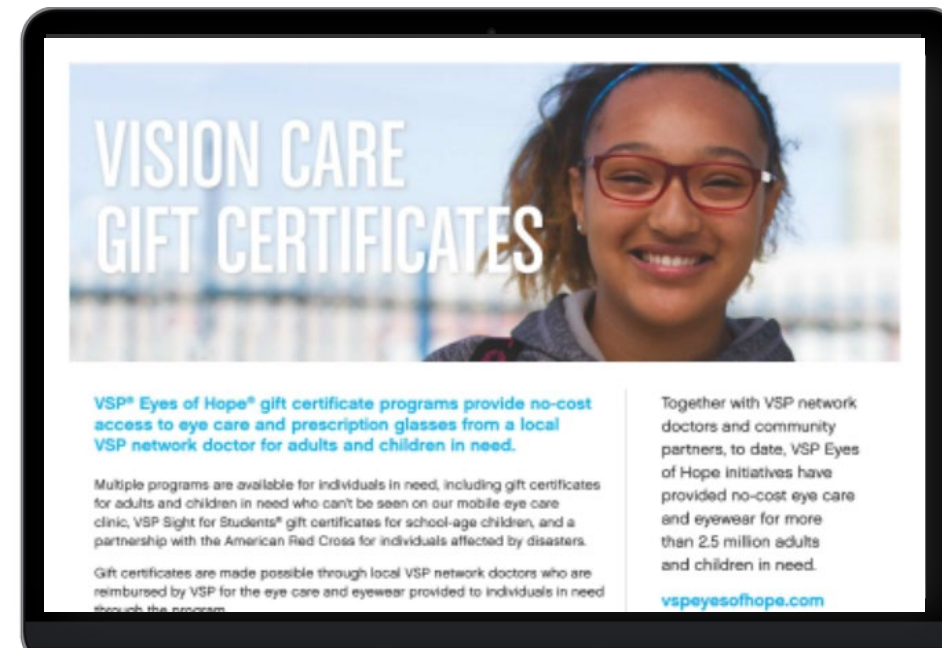
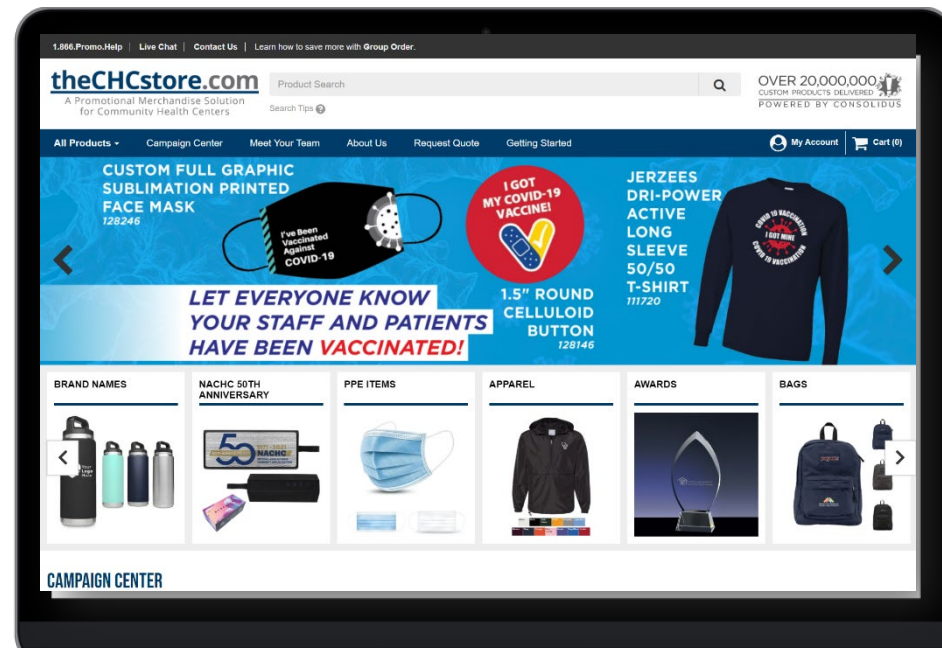


**COMMITTEE  
PARTICIPATION**





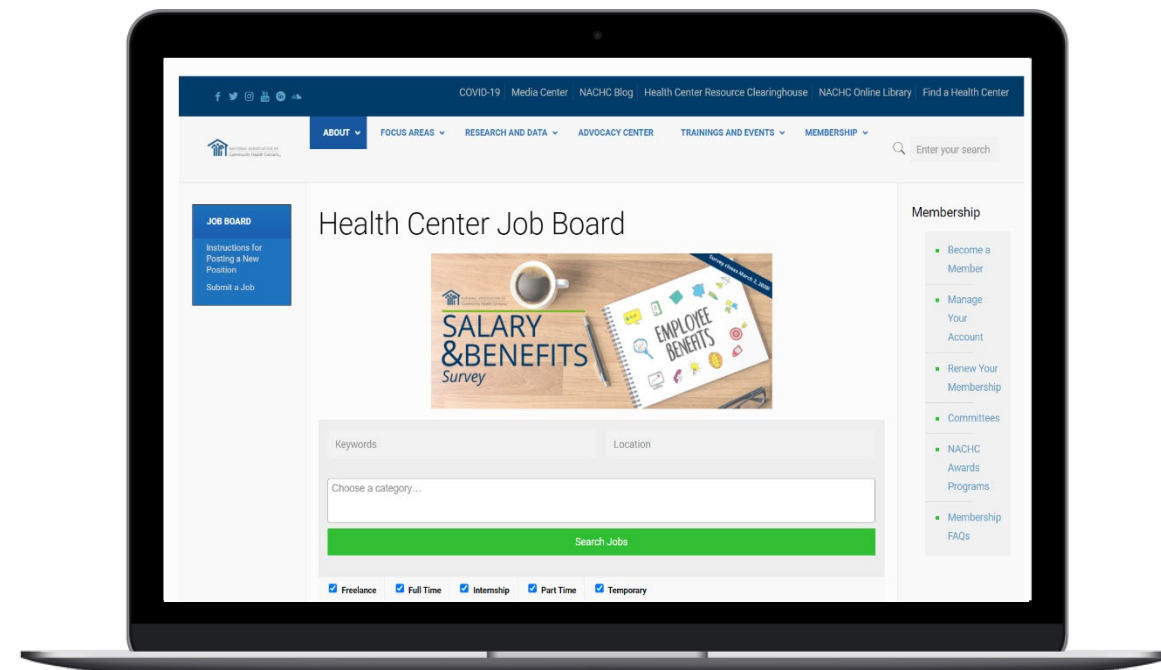
# Additional Member Benefits





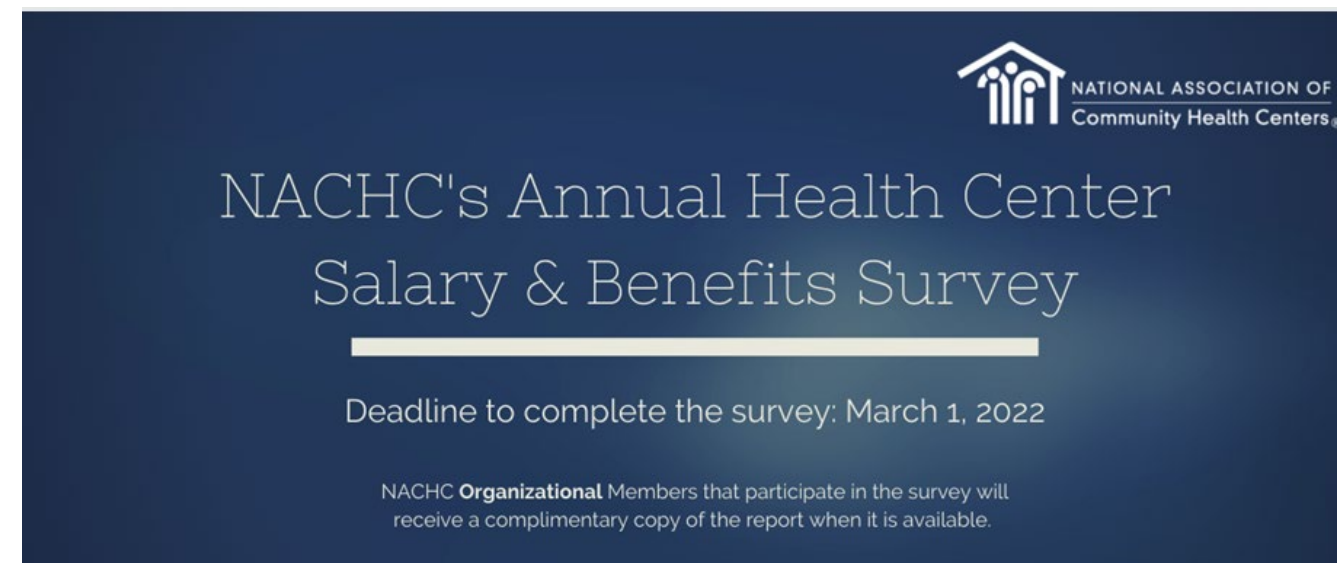
# Additional Member Benefits

## JOB BOARD



Free posting of 75 words to Organizational Members!  
To learn more, [click here!](#)

## SALARY & BENEFITS SURVEY



Participating Organizational Members Receive a Free Report.

# Chairs Report

# Chairs Report

**Anthony Blake Hall, MBA, Committee Chair**  
Community Health of South Florida, Inc., FL

**Beth Wrobel, Co-Vice-Chair**  
HealthLinc, Inc., IN

**Julia Liou, Co-Vice-Chair**  
Asian Health Services, CA

- Updates and Perspectives from Vice-Chairs (optional)
- Review Committee's Charge
- Reimagining the Membership Committee to Support the "CHCs of the Future and NACHC of the Future"
  - *Potential Committee Priorities*
    - Workforce (College Health Professionals/HBCU/Health Equity)
    - Innovation (Conferences etc.)
    - Update Membership Dues Structure
    - Identify New Member Benefits
    - FQHC Branding

# Old Business



# NACHC Membership Ambassador Program

## Goal:

Link registrations from non-member FQHC's directly to committee members to discuss Organizational Membership, identifying interested parties, sharing Organizational Membership experience, and identifying areas where additional information/education is needed.

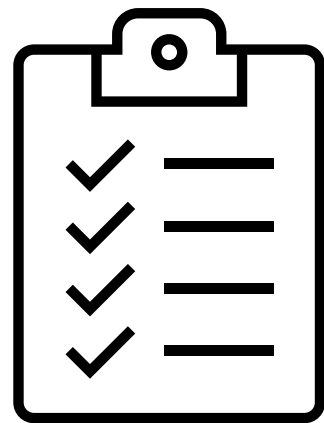
## Process:

- Each committee member will be tasked to reach out to non-member FQHCs in their state. If there are multiple committee members from one state, they should coordinate with each other, or can assist committee members from other states.
- Committee members will be provided with NACHC Membership information and handouts (Member benefits brochure, Organizational Membership forms, etc.) in PDF format.
- Committee members will be provided with sample email verbiage, and relevant contact information.
- NACHC Membership team will follow up with committee members to see if any assistance or additional outreach by NACHC staff is needed.



# New Business

# NACHC RESOURCES



[Timely and Effective Resources](#)

[Executive Coaching Services For Health Center Leadership](#)

[NACHC Leadership Trainings Graduate Network](#)

[Member Benefits](#)

[Conferences:](#) Connecting you with a network of colleagues from over 1400 community centers across the country.

[The CHC Store:](#) Your first stop for all your PPE, health center branded apparel, giveaway items, hand-sanitizer, and more!

**Be sure to visit these sites up-to date information and resources:**

[COVID Vaccine Communications Toolkit:](#) This page shares key vaccine messages, sample social media posts and graphics, selfie signs, and more resources to help health centers communicate with staff and patients about the COVID-19 vaccines.

[NACHC's COVID-19 Resource Page:](#) NACHC has curated FAQs relevant to health centers. Responses may include links to additional resources or the best-gathered information from subject matter experts.

[The NACHC Online Library COVID19 page :](#) Check back for frequent updates! These resources are constantly evolving as circumstances change.

[The Health Center Resource Clearinghouse COVID 19 :](#) This resource brief provides a selection of current, high-quality resources about Novel Coronavirus (COVID-19). These resources provide preparedness information for primary care providers, as well as answers to frequently asked questions.

[COVID-19 Health Center Advocacy Toolkit:](#) Resources to help navigate your advocacy efforts to protect Community Health Centers during *and* after COVID-19.



# Research & Fact Sheets

**Health Centers Mark 1 Year of Ensuring Equity in COVID Vaccinations** As of February, 2022

Health centers have been on the frontlines of the COVID-19 pandemic since the beginning and have faced innumerable challenges during this time. Despite these adversities, they have been instrumental in boosting COVID-19 vaccination rates across the U.S. among underserved and minority populations. In the 1 year since the health center vaccination program began, they have succeeded in administering over 2 in 3 shots to racial and ethnic minorities.

Since February 2021: Health centers have administered 19 million vaccines

67% of patients vaccinated are from racial and/or ethnic minority backgrounds

Since April 2020: Health centers have tested 17 million patients

60% of patients tested are from racial and/or ethnic minority backgrounds

While health centers continue to make great strides in vaccinations and testing, addressing workforce shortages remains a high priority. Health centers continue to face staffing challenges, as 44% felt they didn't have adequate staff to administer vaccines as of January 2022

Source and Notes: Data presented in this fact sheet come from the Bureau of Primary Health Care, Health Resources and Services Administration, Health Center COVID-19 Survey. Survey data are preliminary and do not reflect all health centers. Some duplication of patients tested from week to week may occur. For more information, please visit <https://bphc.hrsa.gov/emergency-response/coronavirus-healthcenter-data>.

**NATIONAL FINDINGS ON HEALTH CENTERS' RESPONSE TO COVID-19** As of April 23, 2021

**Health Centers are Meeting Vaccine Needs in Their Communities This Week:**

The Health Resources and Services Administration is surveying health centers weekly to track their COVID-19 response. 79% (1,085) of health centers responded this week. To date, over 10.6 million health center patients have been tested for COVID-19, 12% have tested positive and over 3 million vaccines have been completed.

290 mobile van events

1,013 pop-up clinic events

**This week's COVID-19 vaccinations:**

466,153 Vaccinations were initiated

474,037 Vaccinations were completed

73% of vaccinations initiated were racial and/or ethnic minority patients

63% of vaccinations completed were racial and/or ethnic minority patients

**SINCE JANUARY 1, 2021:**

Total vaccinations initiated **5,159,688**

Total vaccinations completed **3,559,212**

**America's Health Centers** August 2021

**HEALTH CENTERS** are consumer-driven and patient-centered organizations that serve as a comprehensive and cost-effective primary health care option for America's most underserved communities. Health centers increase access to health care and provide integrated services based on the unique needs of the communities they serve.

There are **four key components** that define health centers & help them reach America's most underserved communities:

- 1 Located in Areas of High Need**  
Designated as medically underserved areas or populations by the federal government
- 2 Comprehensive Set of Services**  
Based on community needs, health centers offer medical, dental, vision, behavioral health, and enabling services
- 3 Open to Everyone**  
Regardless of insurance status or ability to pay, and offer sliding fee scale options to low-income patients
- 4 Patient-Majority Governing Boards**  
At least 51% of every health center's governing board must be made up of patients

**Who Do Health Centers Serve?**  
health centers now serve more than **28 million patients** including:

- 2.9 million patients 65 years and older
- Almost 8 million children
- 1.3 million homeless patients
- Almost 400,000 veterans
- 182,000 patients receiving MAT for opioid use disorder

Most Health Center Patients Are Uninsured or Publicly Insured

- 46% Medicaid
- 22% Uninsured
- 10% Medicare
- 1% Other Public
- 18% are Uninsured or Publicly Insured

Most Health Center Patients Are Members of Racial & Ethnic Minority Groups

38% Racial/Ethnic Minority

Most Health Center Patients Have Low-Incomes

At the Federal Poverty Level (100% FPL) or Below

- 95% are Low-Income
- 23% 101% FPL to 200% FPL
- 9% Above 200% FPL
- 68% At the Federal Poverty Level (100% FPL) or Below

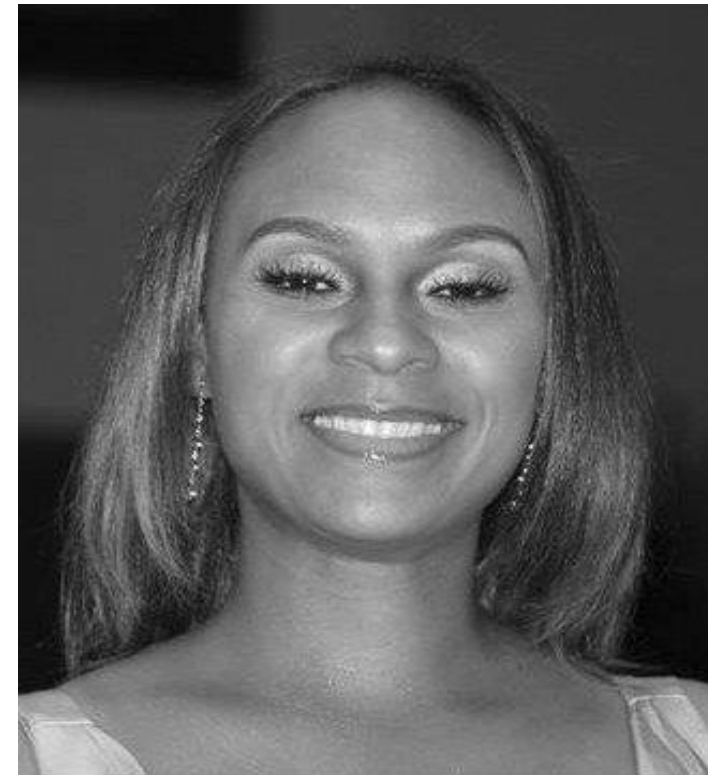
<https://www.nachc.org/research-and-data/research-fact-sheets-and-infographics/>



# NACHC Membership Department



**Maurice Denis,**  
*AVP Membership &  
Marketing*  
[mdenis@nachc.org](mailto:mdenis@nachc.org)



**Keisha Mukanos,**  
*Deputy Director,  
Membership & Marketing*  
[kmukanos@nachc.org](mailto:kmukanos@nachc.org)



**Daryl Northrop,**  
*Membership Account  
Specialist*  
[dnorthrop@nachc.org](mailto:dnorthrop@nachc.org)



**Michelle Shiel,**  
*Membership Sales &  
Marketing Specialist*  
[mshiel@nachc.org](mailto:mshiel@nachc.org)

# THANK YOU!

# QUESTIONS?

Email [membership@nachc.org](mailto:membership@nachc.org) for any other questions or comments.