



Together, our
voices elevate° all.

Looking Ahead to 2022

Advancing Value-Based Care

December 14, 2021

THE NACHC MISSION

America's Voice for Community Health Care

The National Association of Community Health Centers (NACHC) was founded in 1971 to promote efficient, high quality, comprehensive health care that is accessible, culturally and linguistically competent, community directed, and patient centered for all.





Packaging and implementing evidence-based transformational strategies for safety-net providers

Bringing science, knowledge, and innovation to practice



Cheryl Modica

*Director,
Quality Center*



Cassie Lindholm

*Deputy Director,
Quality Center*



Lizzie Utset

*Specialist,
Quality Center*

Quality Center (Host)

Layout

Participants

Search

Panelist: 1

Quality Center
Host

Attendee:

Camila Silva (NACHC)
Me

Quality Center

Host

Raise your hand
button



Unmute

Share

...

✖

Participants

Chat

Chat: When using the chat, please send the message to "Everyone"

Today's Objectives:



- **Appreciate** 2021 participants and Featured Health Centers
- **Explore** opportunities available to 2022 registrants
- **Contribute** to the Elevate 2022 Strategy & Roadmap

ACTION STEPS

- Register for Elevate 2022
- Complete VTF Assessment
- Apply to scholarships

2021 Featured Health Centers



Sharing a HUGE 'thank you' to the teams at our Featured Health Centers, **Generations Family Health Center (CT)** and **Coastal Family Health Center (MS)**, along with all the Elevate 2021 participants!





WOW!

- **In 2021, the Quality Center awarded:**
 - **70 scholarships** to the 2021 Institute for Healthcare Improvement (IHI) National Forum
 - **89 scholarships** to IHI's Open School
 - **20 scholarships** to IHI's Activating Agency Through the Psychology of Change course
- Stay tuned – more scholarship opportunities to come in 2022!

Elevate Learning Forum



Guided application of the Value Transformation Framework

National learning forum and peer exchange

Value Transformation Framework



COLLABORATE



LEARN




SHARE



CREATE



INNOVATE



Target Audience:
FQHCs/look-alikes/
PCAs/HCCNs/NTTAPs

Elevate Supports You!

Supporting QI professional development

Institute for Healthcare Improvement educational and training opportunities:

- **Open School:** 30+ QI related virtual courses, including CEUs for nurses, physicians, and pharmacists.
- **Moving Quality Improvement from Theory to Action**
March 22, 2022 | 4-month online course with coaching
- **Finding and Creating Joy in Work**
April 6, 2022 | 3-month online course with coaching

APPLY NOW: bit.ly/Elevate_IHICourseInterest

A total of 20 scholarships (*'Theory to Action'* and *'Joy in Work'*) to be offered to participants on today's call, selected at random, from those registered for Elevate with a completed VTF Assessment.



Target Audience:
PCA/HCCN staff

Elevate Supports You!

Supporting Professional Development and Peer Exchange among our state/regional PCA/HCCN partners

4-Month Mentor – Mentoring Engagement (February – May 2022)


Access to a mentoring platform to learn, develop and enhance a career plan!

Priority access to IHI's courses: *Finding & Creating Joy in Work* and *Moving QI From Theory to Action*



Share Interest Now: bit.ly/Elevate_MentoringInterest





Target Audience:
FQHCs/PCAs/HCCNs

Elevate Supports You!

Supporting Continuous Compliance as part of ongoing systems transformation.

Free subscription to RegLantern's Continuous Compliance Tool.

- Free 6-month trial
- Free unlimited access to recorded trainings
- Free Form 5A evaluation
- Free unlimited access to web-based platform

To receive invite: Health centers registered for Elevate 2022 with 3+ completed VTF Assessments: <https://reglantern.com/vtf>



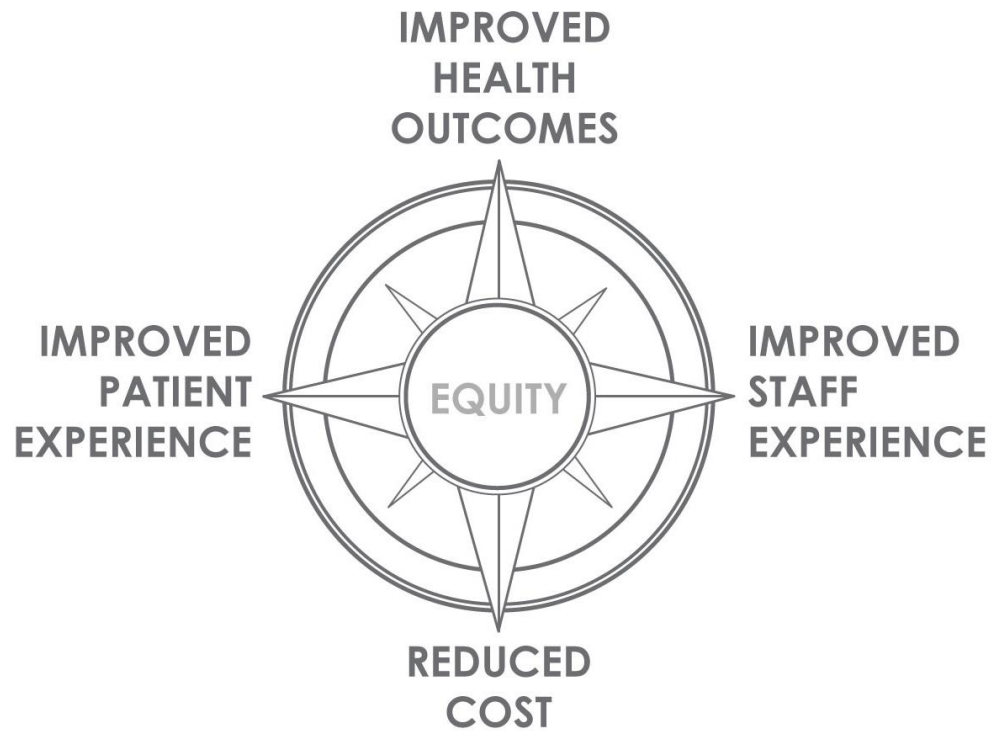
Our 2022 Journey

Accelerate...
Document...
Demonstrate...

VALUE

http://bit.ly/Elevate_2022

Our Goal



Value = Quintuple Aim

Value

Begin

with the end in mind

- Steven Covey

2022 Featured Health Centers

Su Clínica

 **ESPERANZA**
health centers

 **CHARLES B. WANG**
COMMUNITY HEALTH CENTER
王嘉廉社區醫療中心

evara
HEALTH

 **PARK DUVALLE**
COMMUNITY HEALTH CENTER

 **MOUNTAIN PEOPLE'S**
HEALTH COUNCILS
INC.

NEW
HEALTH
North End • Charlestown

Fish River
RURAL HEALTH

 **Keystone Rural Health Consortia, Inc.**
One Team Working Together For Better Community Health Care

ZUFALL
HEALTH
COMMUNITY
HEALTH
CENTERS

In the top 20 health centers nationally when looking at composite performance across the below six measures (2019 UDS)



DIABETES



HYPERTENSION



OBESITY



DEPRESSION



COLORECTAL
CANCER



CERVICAL
CANCER



Our Value

The 2022 Imperative

- Every health center across the nation should be able to document at least one value-based model of care (the mechanics) by December 2022.
- Together, **communicate a foundational model** that sits at the core of our collective work in serving 29 million patients across the nation.
- **Speak our value.** And through that message, be in a position of offense.

An unprecedented time in history.
Health centers have the opportunity to shift –
rather than just recover.



Centers for Medicare and Medicaid (CMS) Innovation Center

Alternative Payment Models (APMs)

CMS looking to define APMs for the following categories:

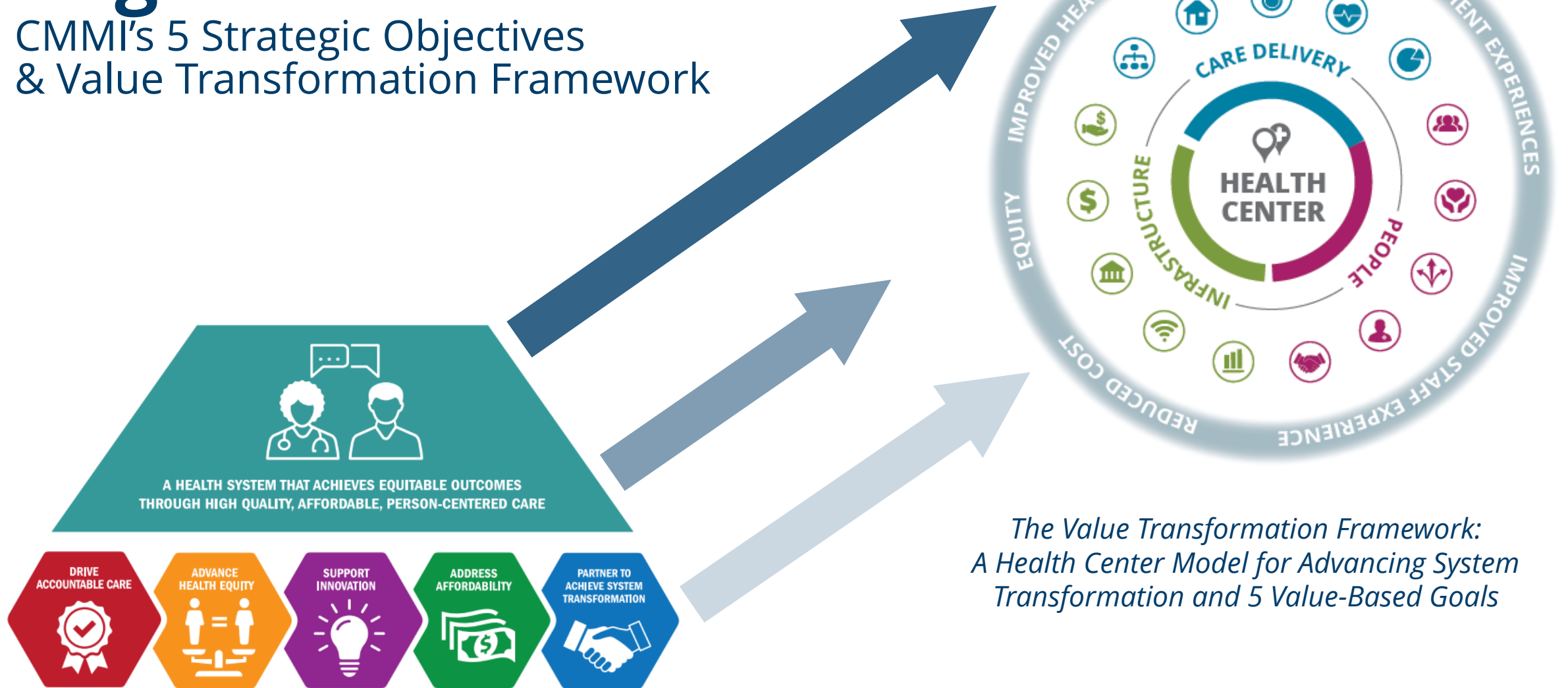
Provider Type	Primary care
Community	Safety-net
Health Conditions	e.g., cancer screening, diabetes, HTN, obesity, depression
Innovation	Equity lens

<https://innovation.cms.gov/strategic-direction-whitepaper>

Health centers meet this need!

Alignment

CMMI's 5 Strategic Objectives & Value Transformation Framework



*The Value Transformation Framework:
A Health Center Model for Advancing System
Transformation and 5 Value-Based Goals*

*CMS Innovation Center Vision and 5 Strategic
Objectives for Advancing System Transformation*

<https://innovation.cms.gov/strategic-direction-whitepaper>

2022 Strategy

	National Impact	Local Impact
Advance and document a portfolio of health center value-based care models.	Hold up a variety of FQHC Alternative Payment model options.	Peer-to-peer exchange to drive development of the health center's value-based care models.
Advance health centers as the leading primary care, safety-net care delivery model that public and private payers can use to align payment.	Rebalance the health care system toward primary care and the health center model; offer payment models.	Value-based care models that offer negotiating power with local payers.

Document improvement on the Quintuple Aim goals:
*improved health outcomes, improved patient and staff experience,
 reduced cost, and improved equity.*



2022 Roadmap (DRAFT):



Come Together Around a Population of Focus

*Patients aged 50-75 years
(Medicare opportunity)*



Narrow the Target Group

High Risk



Mobilize Care Team in New Ways

Focus on Care Extenders



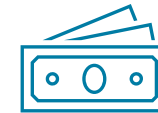
Optimize Health Information Systems

Capture data; full coding



Engage Patients & Community

Co-design



Maximize Revenue



Value-Based Payment Models

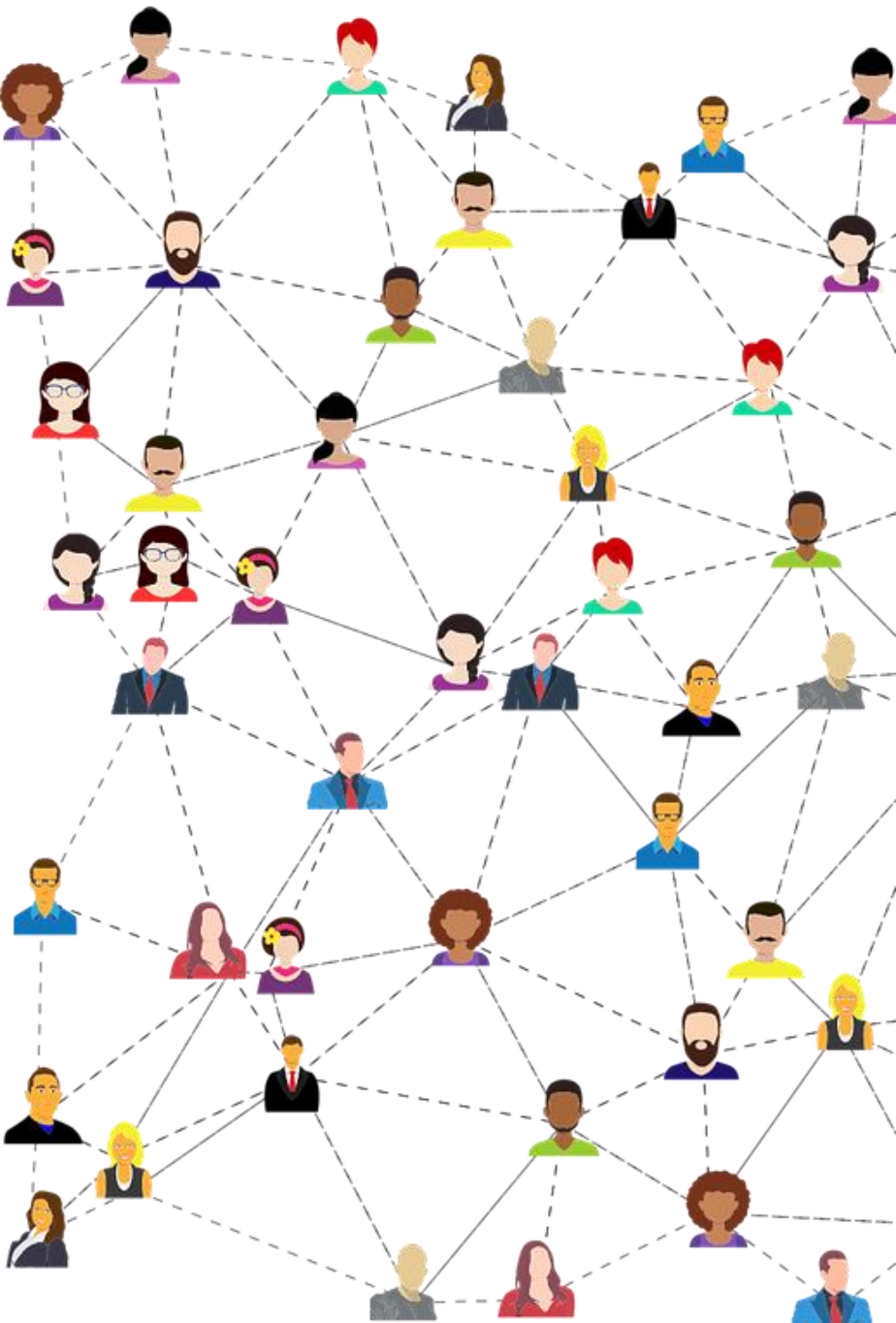


Evidence-Based Health Center Systems



Community Partnerships and Co-Design

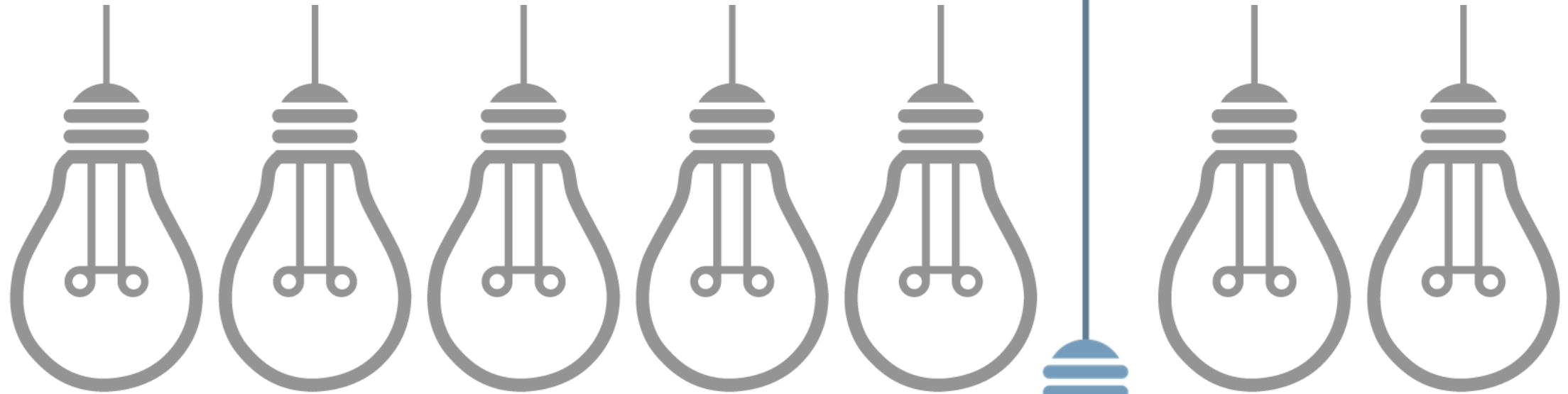
Online VTF Learning Community



Miss a learning forum? Slides and recordings are posted on the platform after every webinar.

Access tools and resources to support your transformation journey.

Engage in peer-to-peer forums with other health centers, PCAs, HCCNs, and top performers.



Elevate 2022: *Feedback & Discussion*





CALL FOR APPLICATIONS

2022-2023 QI Advisory Board Members:

Applications are now being accepted for members to serve on NACHC's QI Advisory Board for the term of Jan 1, 2022 - Dec 31, 2023

Deadline: December 15, 2021

<https://bit.ly/2022QIAdvisoryBoard>



WORKFORCE CHALLENGE

Cultivating the Health Center “Workforce of the Future” Through Youth Engagement



CHALLENGE: How can health centers, PCAs and/or HCCNs build interest and engagement among middle and high school students in future health center careers?

PARTICIPANTS

PCAs
HCCNs
Health Centers

TIMELINE

**Best & Promising
Practices Due**
January 7, 2022

Innovation Phase Starts
March 2022

CRITERIA

For existing & recent
programs:

**Impact
Adaptability
Sustainability**

PRIZES

Top 5 Finalists:
Scholarship to IDEO-U’s
“Hello Design Thinking”

Winner: \$10,000

GET STARTED NOW!



Use the 15 minutes left in this hour to complete two important action items:

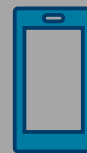
1

REGISTER

Current Elevate registration expires on December 31, 2021.

Sign up today:
bit.ly/Elevate_2022

OR, use your phone to scan the QR code:



2

ASSESS

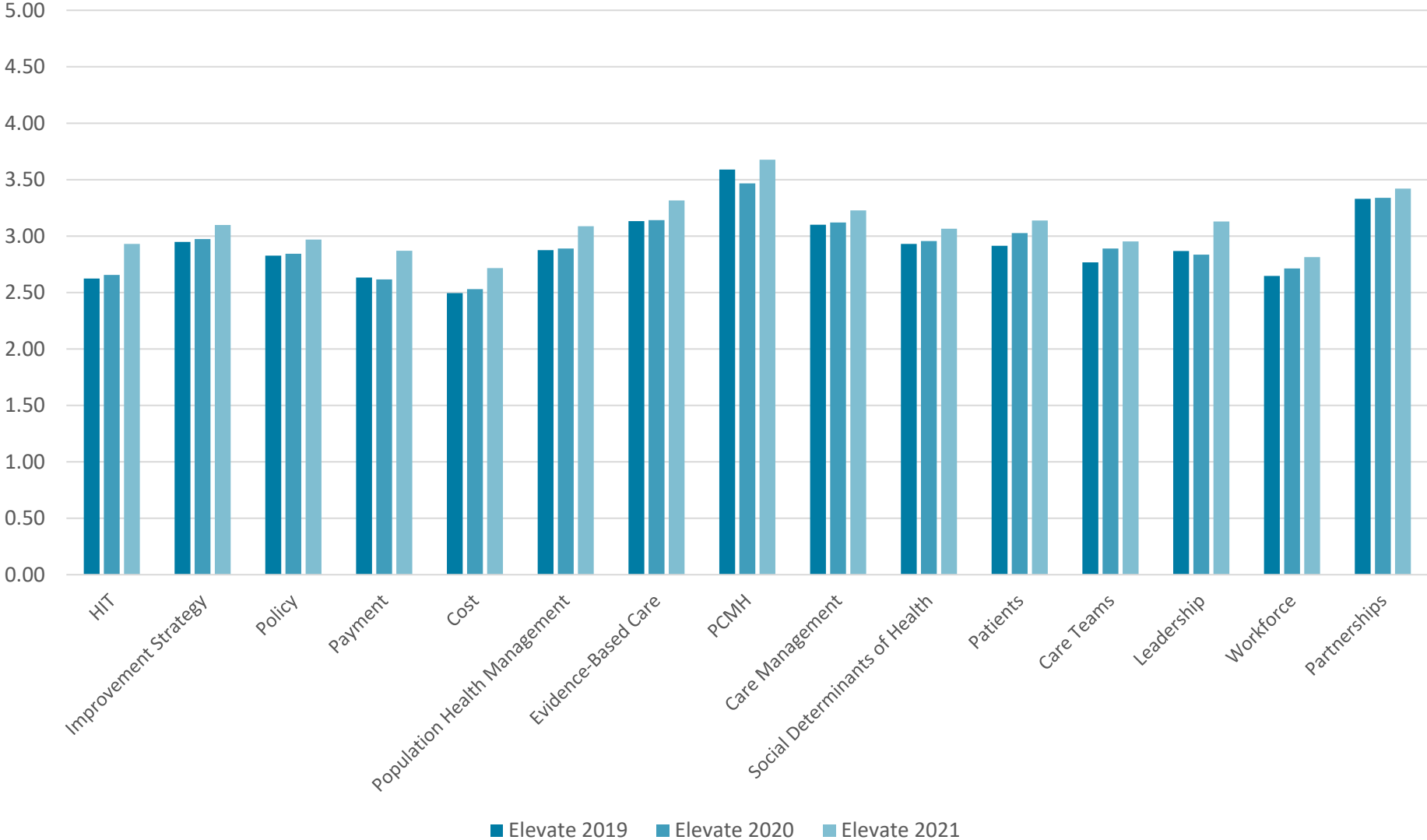
<https://reglantern.com/vtf>

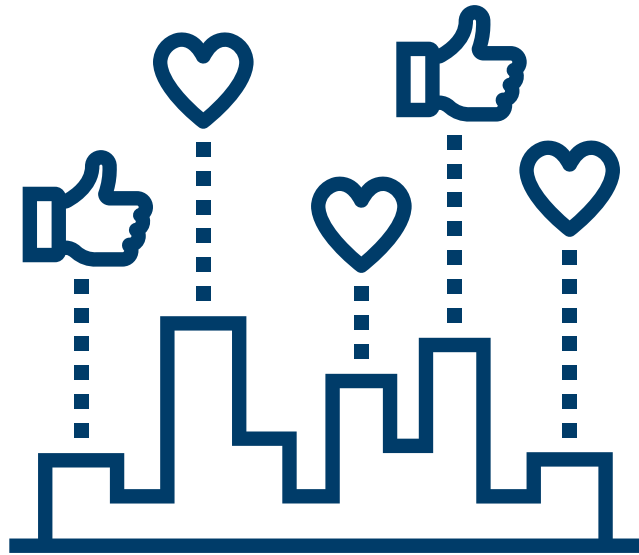
1 VTF Assessment required for individual scholarships to IHI learnings

3+ VTF Assessments needed for organizational access to continuous compliance tool

VTF Assessment

The graph represents the change in average VTF Assessment scores among all health centers participating in Elevate 2019, 2020, and 2021.





Provide Us Feedback

FEEDBACK

Don't forget! Let us know what you thought about today's session.

FOR MORE INFORMATION CONTACT:

qualitycenter@nachc.org

Cheryl Modica
Director, Quality Center
National Association of Community
Health Centers
cmodica@nachc.org
301.310.2250

See you in 2022!



elevate°

**Together, our
voices elevate° all.**

The Quality Center Team

Cheryl Modica, Cassie Lindholm, & Lizzie Utset

qualitycenter@nachc.org