

# NATIONAL FINDINGS ON HEALTH CENTERS' RESPONSE TO COVID-19

As of August 13, 2021

## Health Centers' Vaccine Events Past 2 Weeks:

The Health Resources and Services Administration is surveying health centers bi-weekly to track their COVID-19 response. 78% (1,078) of health centers responded this fielding. To date, over **12 million** health center patients have been tested for COVID-19 and over **15 million** vaccines have been completed.

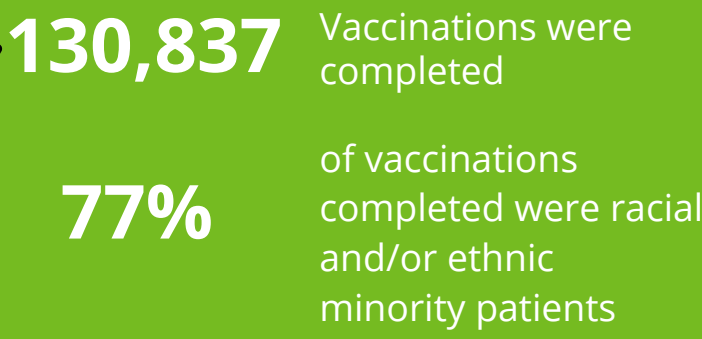
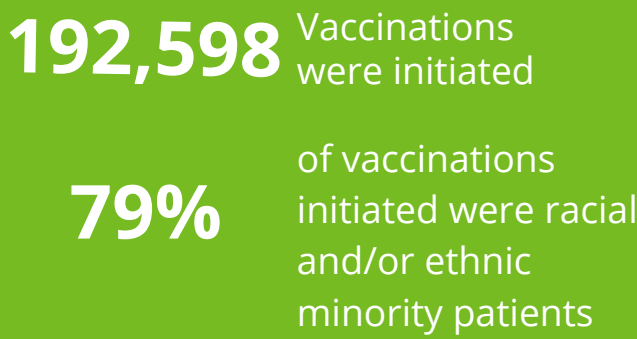


mobile van events



pop-up clinic events

### Past two week's COVID-19 vaccinations:

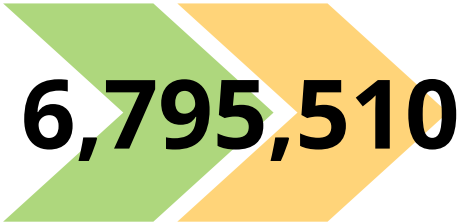


### SINCE JANUARY 1, 2021:

Total vaccinations initiated <sup>1</sup>

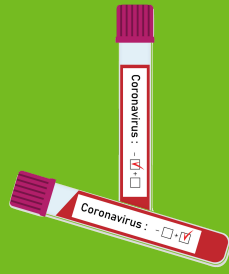


Total vaccinations completed



Past two weeks of COVID-19 virus detection

**369,165** Patients were tested  
 61% of patients tested were racial and/or ethnic minorities



**53,999** Patients tested positive  
 58% of patients tested positive were racial and/or ethnic minorities

SINCE APRIL 3RD, 2020:  
 Total patients tested

**12,245,203**



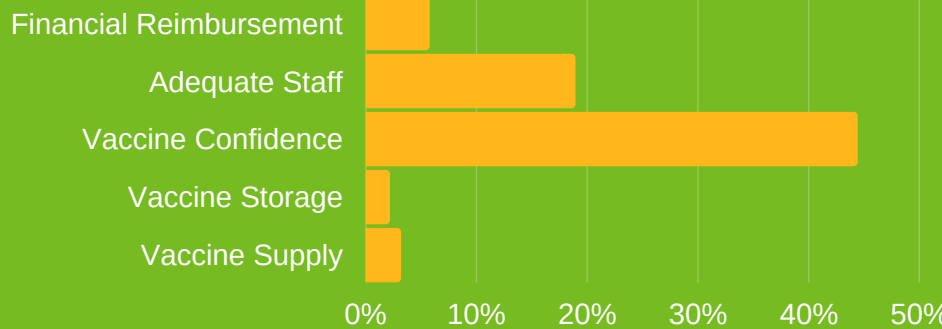
Total patients testing positive

**1,459,853**

Health Centers Continue to Have Issues with Test Result Turnaround Time and Administering the Vaccine

% of Health Centers That Have These Challenges with Vaccine Deployment:

**48%** of Health Centers Report COVID-19 Test Results Have a Turnaround Time of less than 24 hours



Ongoing Health Center Operations and COVID-19 Challenges:

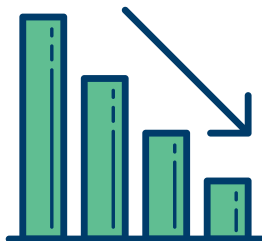


**90%** of health centers conducted visits virtually

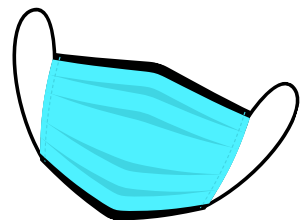
**315** health center sites temporarily closed due to COVID-19<sup>2</sup>



Health center visit rates remain below normal at **90%**<sup>3</sup>



**96%** of health centers have adequate PPE for the next week



Source and Notes: Data presented in this fact sheet come from the Bureau of Primary Health Care, Health Resources and Services Administration, Health Center COVID-19 Survey collected on August 13, 2021. 78% (1,078) of federally-funded health centers responded. Survey data are preliminary and do not reflect all health centers. Some duplication of patients tested from week to week may occur. For more information, please visit <https://bphc.hrsa.gov/emergency-response/coronavirus-healthcenter-data>.

1. Total reported refers to the number of respondents for COVID-19 testing since the survey period starting on April 3, 2020.  
 2. Due to staff exposure, school closure, site/service closure, and other reasons.  
 3. Visits refers to all visits regardless of service type (e.g. medical, dental, behavioral health, etc.), including virtual visits.

For more information, email [research@nachc.org](mailto:research@nachc.org) or visit [www.nachc.org/coronavirus](http://www.nachc.org/coronavirus).