



Together, our
voices elevate° all.

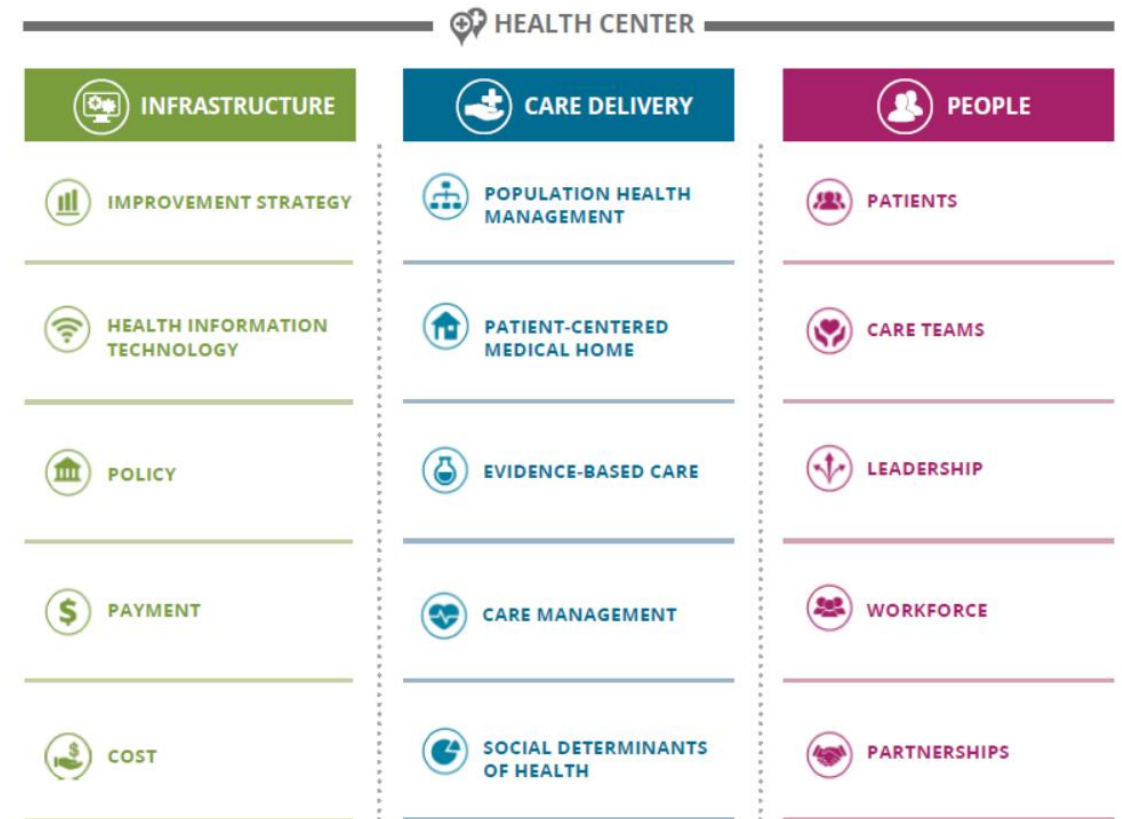
Discussion & Listening Session with PCAs/HCCNs

May 21, 2021

Value Transformation Framework

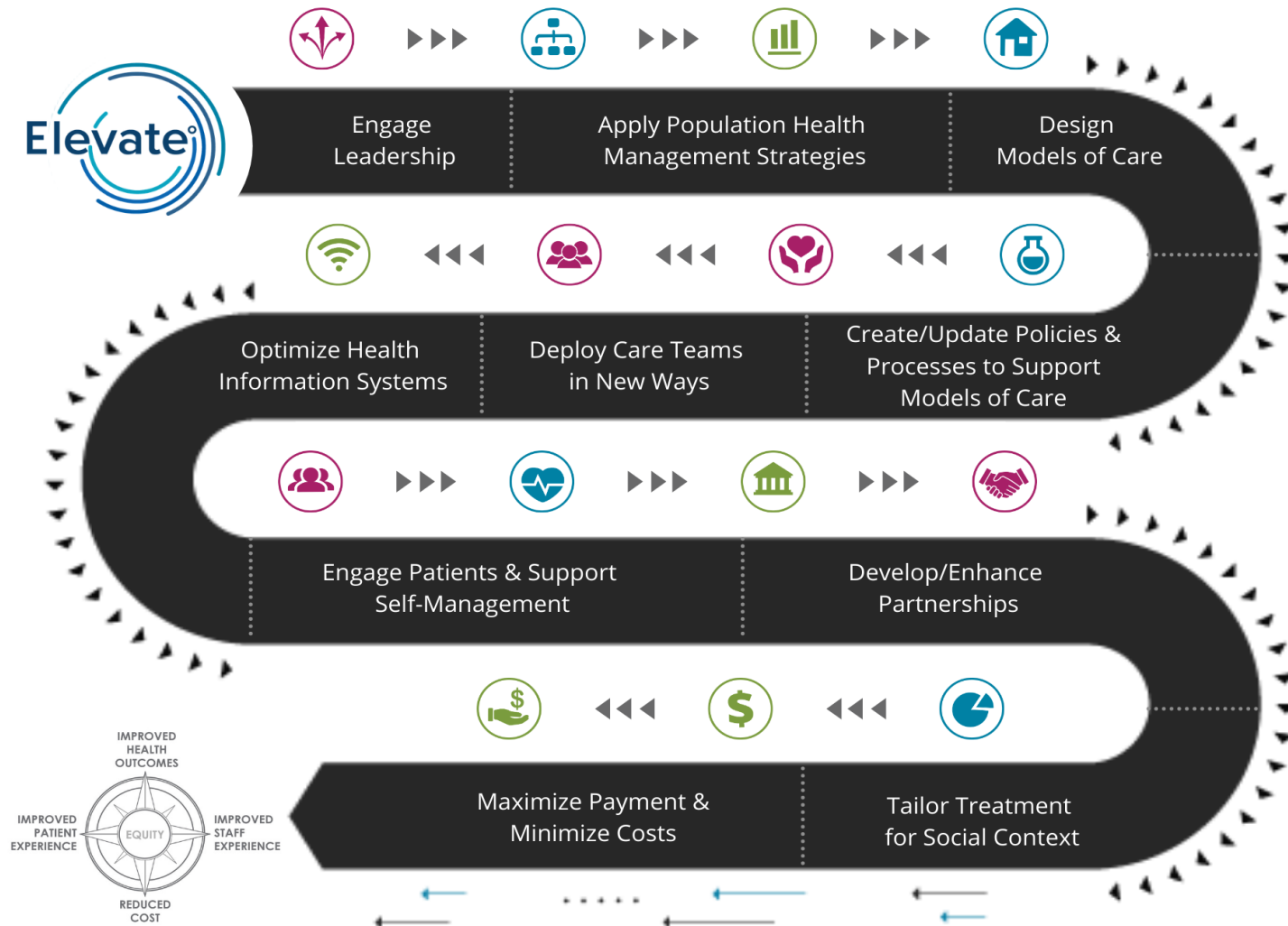


© NACHC, all rights reserved, 03.01.18



© NACHC, all rights reserved, 07.17.18

2021 Curriculum



The Elevate 2021 curriculum is designed to support health centers in application of the 15 Change Areas of the Value Transformation Framework and transformation toward value-based care. It outlines a path the Elevate learning forum will take over the year while recognizing that transformation is not linear and that organizations will adopt and apply the curriculum in a manner and order that fits their individual needs and circumstances.



Elevate Change Areas and Curriculum: Connecting to PCA/HCCN Workplan Priorities



PCAs

Patient & Provider Experience

- Comprehensive Services
- Program Development
- Service Integration (Optional)
- Innovation (Optional)

Interoperability

- Readiness for Value-Based Care
- Innovation (Optional)

Workforce

- Workforce Planning
- Executive Development
- Workforce Advancement (Optional)

ER Preparedness

- Continuity of Care & Communication
- Emergency Preparedness

QI & Performance

- Quality Care, Diabetes
- Quality Care, 2020 Focus
- Social Risk Factors
- Community Partnerships (Optional)

Supplemental \$

- COVID-19 Supplemental \$ - Health
- Workforce Supplemental \$

HCCNs

Patient & Provider Experience

- Patient Access
- Patient Engagement
- Provider Burden

Interoperability

- Data Protection
- HIE
- Data Integration

Use Data to Enhance Value

- Data Analysis
- Social Risk Factor, - Applicant Choice

Elevate...Connecting to FY 2021 American Rescue Plan Funding (H8F)



- Plan, prepare for, promote, distribute, administer, and track COVID–19 vaccines, and carry out other vaccine-related activities.
- Detect, diagnose, trace, and monitor COVID–19 infections and related activities necessary to mitigate the spread of COVID–19, including activities related to, and equipment or supplies purchased for, testing, contact tracing, surveillance, mitigation, and treatment of COVID-19.
- Purchase equipment and supplies to conduct mobile testing or vaccinations for COVID-19, purchase and maintain mobile vehicles and equipment to conduct such testing or vaccinations, and hire and train laboratory personnel and other staff to conduct such mobile testing or vaccinations, particularly in medically underserved areas.

- **Establish, expand, and sustain the health care workforce** to prevent, prepare for, and respond to COVID–19, and to carry out other health work force-related activities.
- **Modify, enhance, and expand health care services and infrastructure.**
- Conduct community outreach and education activities related to COVID–19.



Elevate Change Areas and Curriculum (May-Dec 2021): Connecting to Rescue Funds (H8F) Priorities

Recovery & Stabilization

- Pent Up Demand
- Patient Registries
- Virtual Care
- Care Transitions and Coordination
- Outreach
- Population Health and Social Determinants
- Patient Engagement
- Workforce Well-Being
- Continuity of Care
- Strategic Planning

Infrastructure: Improve & Reimagine

- Physical Infrastructure Improvements
- Facilitating Access
- Virtual Care Access
- Team-Based Care
- Mobile Units/Vehicles

Maintaining & Increasing Capacity

- Care Teams/Personnel
- Care Management
- Virtual Visits
- Behavioral Health
- Community Partnerships

Our Year to Date



Improvement
Strategy



Health Information
Technology



Policy



Payment



Cost



Population Health
Management



Patient Centered
Medical Home



Evidence-Based
Care



Care Coordination &
Management



Social Determinants
of Health



Patients



Care Teams



Leadership



Workforce



Partnerships

Core Calls

Feb: Launch Call

Mar: Leadership, Population Health Management, & Risk Stratification

Apr: HIT & Models of Care

May: Care Teams

Jun: Evidence-Based Care

Deep Dives

Quality Improvement

Virtual Care

Care Management

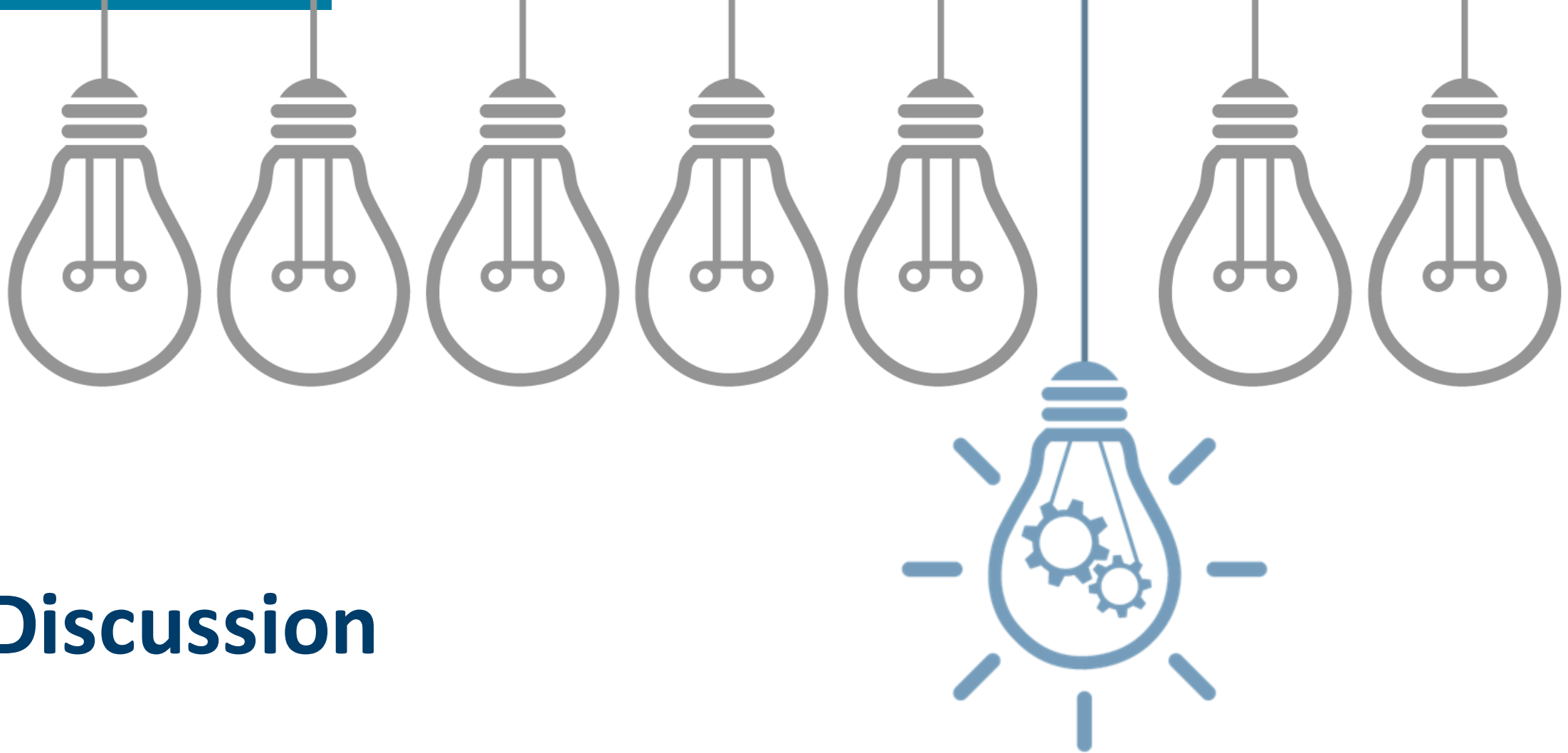
Evidence-Based Care: Cancer Screening

Evidence-Based Care: Diabetes

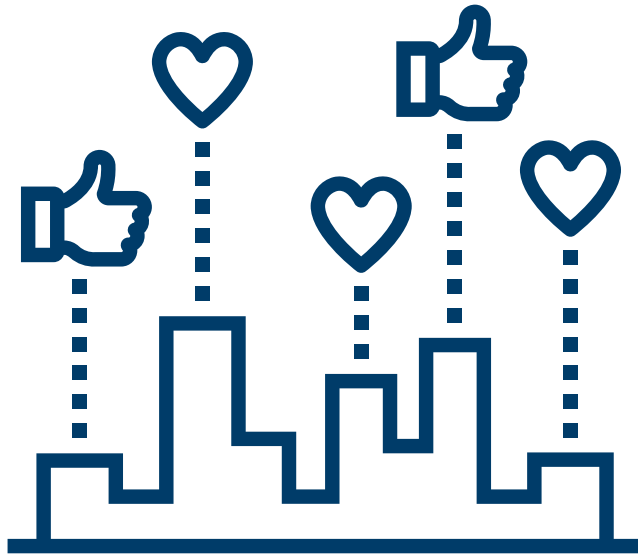
Evidence-Based Care: Hypertension

Evidence-Based Care: Oral Health

PCMH



Discussion



Provide Us Feedback

FEEDBACK

Don't forget! Let us know what you thought about today's session.

FOR MORE INFORMATION CONTACT:

qualitycenter@nachc.org

Cheryl Modica
Director, Quality Center
National Association of Community
Health Centers
cmodica@nachc.org
301.310.2250

Next Elevate Forum Call:

June 8th, 2021
1 -2 pm ET



elevate°

**Together, our
voices elevate° all.**

The Quality Center Team

Cheryl Modica, Luke Ertle, Camila Silva & Lizzie Utset

qualitycenter@nachc.org