



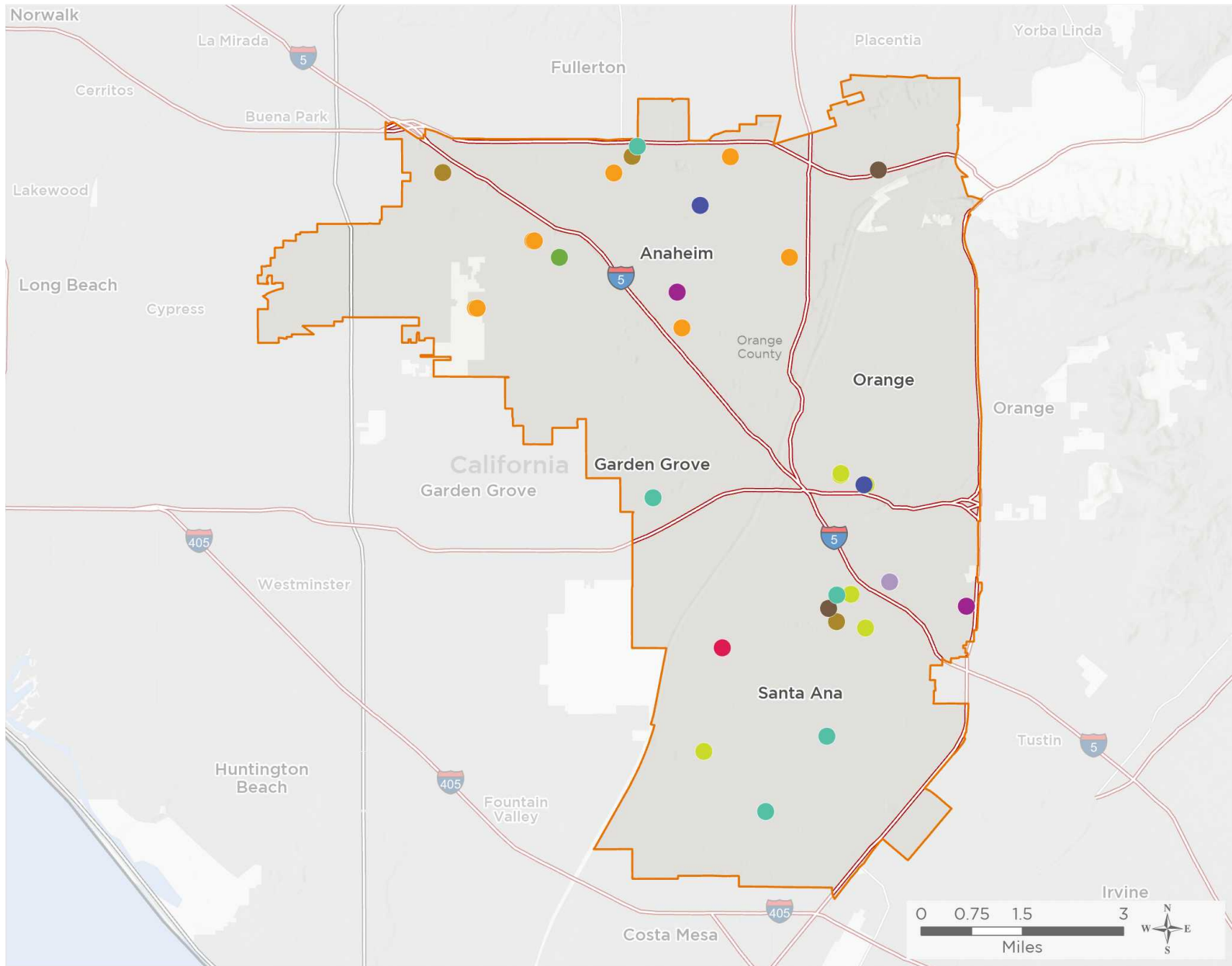
NATIONAL ASSOCIATION OF  
Community Health Centers

# Representative Lou Correa

117th United States Congress

California's **46<sup>TH</sup>** Congressional District

The 10 federally-funded health center organizations with a presence in California's 46th Congressional District leverage **\$37,875,631** in federal investments to serve **382,829** patients.



**44**

## NUMBER OF DELIVERY SITES IN CONGRESSIONAL DISTRICT

- Federally-funded site (each color represents one organization)
- 117th Congressional District Boundaries
- Major Highways
- Highways
- Major Roads
- County Boundaries
- City or Town

Notes | Delivery sites represent locations of organizations funded by the federal Health Center Program. Some locations may overlap due to scale or may otherwise not be visible when mapped. Federal investments represent the total funding from the federal Health Center Program to grantees with a presence in the state in 2019.

Sources | Federally-Funded Delivery Site Locations: data.HRSA.gov, November 16, 2020. Health Center Patients and Federal Funding | 2019 Uniform Data System, Bureau of Primary Health Care, HRSA.



# 44

## NUMBER OF DELIVERY SITES IN CONGRESSIONAL DISTRICT

(main organization in bold)

### ● **ALTAMED HEALTH SERVICES CORPORATION**

- AltaMed Medical and Dental Group - Anaheim - 1325 N Anaheim Blvd Ste 200 Anaheim, CA 92801-1202
- AltaMed Medical and Dental Group: Santa Ana, Main - 1400 N Main St Santa Ana, CA 92701-2304
- AltaMed Medical Group: Santa Ana Bristol Clinic - 2720 S Bristol St Ste 110 Santa Ana, CA 92704-6210
- AltaMed Medical Group: Garden Grove, Harbor - 12751 Harbor Blvd Garden Grove, CA 92840-5800
- AltaMed Medical Group: Santa Ana, Broadway - 1515 S Broadway Santa Ana, CA 92707-2253
- AltaMed Pharmacy - Anaheim - 1325 N Anaheim Blvd Ste 102 Anaheim, CA 92801-1202
- AltaMed Pharmacy - Garden Grove - 12751 Harbor Blvd Rm 100 Garden Grove, CA 92840-5800
- AltaMed Pharmacy - Santa Ana, Bristol - 2720 S Bristol St Rm 100 Santa Ana, CA 92704-6207
- AltaMed Urgent Care - Anaheim - 1325 N Anaheim Blvd Ste 101 Anaheim, CA 92801-1202

### ● **BEHAVIORAL HEALTH SERVICES INC**

- BHS Adelante Health Center - 2015 W 1st St Ste L Santa Ana, CA 92703-3516

### ● **BENEVOLENCE INDUSTRIES INCORPORATED**

- Benevolence Industries, Inc. - Anaheim - 303 N East St Anaheim, CA 92805-3341
- Benevolence Industries, Inc. - Orange - 805 W La Veta Ave Ste 110 Orange, CA 92868-3933

### ● **CENTRAL CITY COMMUNITY HEALTH CENTER, INC.**

- CCCHC - Paul Revere Elementary - 140 W Guinida Ln Anaheim, CA 92805-6101
- CCCHC - Thomas Edison Elementary School - 1526 E Romneya Dr Anaheim, CA 92805-1214
- CCCHC-Benito Juarez Elementary School - 841 S Sunkist St Anaheim, CA 92806-4716
- CCCHC-Horace Mann Elementary - 600 W La Palma Ave Anaheim, CA 92801-2361
- Central City Community Health Center - Anaheim #2 - 2243 W Ball Rd Anaheim, CA 92804-5314
- Central City Community Health Center - 2237 W Ball Rd Anaheim, CA 92804-5314
- Central City Community Health Center - Lincoln 1 - 1820 W Lincoln Ave Anaheim, CA 92801-6730
- Central City Community Health Center - Lincoln 2 - 1814 W Lincoln Ave Anaheim, CA 92801-6730
- Central City Community Health Center - Mobile Medical Unit #2 - 2237 W Ball Rd Anaheim, CA 92804-5314

### ● **HURTT FAMILY HEALTH CLINIC, INC.**

- Hurtt Family Health Clinic - Anaheim - 947 S Anaheim Blvd Ste 260 Anaheim, CA 92805-5591
- Hurtt Santa Ana Clinic Site, Suite F - 1100 N Tustin Ave Ste F Santa Ana, CA 92705-3509
- Hurtt Santa Ana Clinic Suite D - 1100 N Tustin Ave Ste D Santa Ana, CA 92705-3509
- Hurtt Santa Ana Clinic, Suite A - 1100 N Tustin Ave Ste A Santa Ana, CA 92705-3509

### ● **MISSION CITY COMMUNITY NETWORK, INC.**

- Mission City Community Network - Anaheim - 1661 W Broadway Anaheim, CA 92802-1110

### ● **SERVE THE PEOPLE, INC.**

- Serve The People Community Health Center - 1206 E 17th St Ste 101 Santa Ana, CA 92701-2641
- Serve The People Dental Clinic - 1206 E 17th St Ste 104 Santa Ana, CA 92701-2641
- Serve the People Mobile Dental Clinic - 1206 E 17th St Santa Ana, CA 92701-2641



44

### NUMBER OF DELIVERY SITES IN CONGRESSIONAL DISTRICT

(main organization in bold)

#### ● **SERVE THE PEOPLE, INC., cont.**

Serve the People Mobile Medical Clinic - 1206 E 17th St Ste 101 Santa Ana, CA 92701-2641

Serve the People Mobile Vision Clinic - 1206 E 17th St Santa Ana, CA 92701-2641

Serve the People Vision Health Center - 1206 E 17th St Ste 201 Santa Ana, CA 92701-2641

#### ● **SHARE OUR SELVES CORPORATION**

SOS-Bridges Health Center - 1000 N Kraemer Pl Anaheim, CA 92806-2610

SOS-El Sol Wellness Center-Broadway - 1014 N Broadway Santa Ana, CA 92701-3408

#### ● **ST. JUDE NEIGHBORHOOD HEALTH CENTERS**

Davis Elementary School - 1405 French St Santa Ana, CA 92701-2414

Garfield Elementary School - 850 Brown St Santa Ana, CA 92701-3902

La Amistad Health Center - 725 W La Veta Ave Ste 260 Orange, CA 92868-4439

La Amistad Mobile Clinic - 353 S Main St Orange, CA 92868-3833

Puente A La Salud Mobile Clinics - 363 S Main St Ste 204 Orange, CA 92868-3833

Valley High School Clinic - 1801 S Greenville St Santa Ana, CA 92704-4005

#### ● **UNIVERSITY OF CALIFORNIA, IRVINE**

Uc Irvine Family Health Center - Santa Ana - 800 N Main St Santa Ana, CA 92701-3576

UC Irvine Family Health Center- Anaheim - 2441 W La Palma Ave Anaheim, CA 92801-2658

Uc Irvine Family Health Center-Anaheim - 300 W Carl Karcher Way Anaheim, CA 92801-2426

Uc Irvine Mobile Medicine Unit - 800 N Main St Santa Ana, CA 92701-3576