



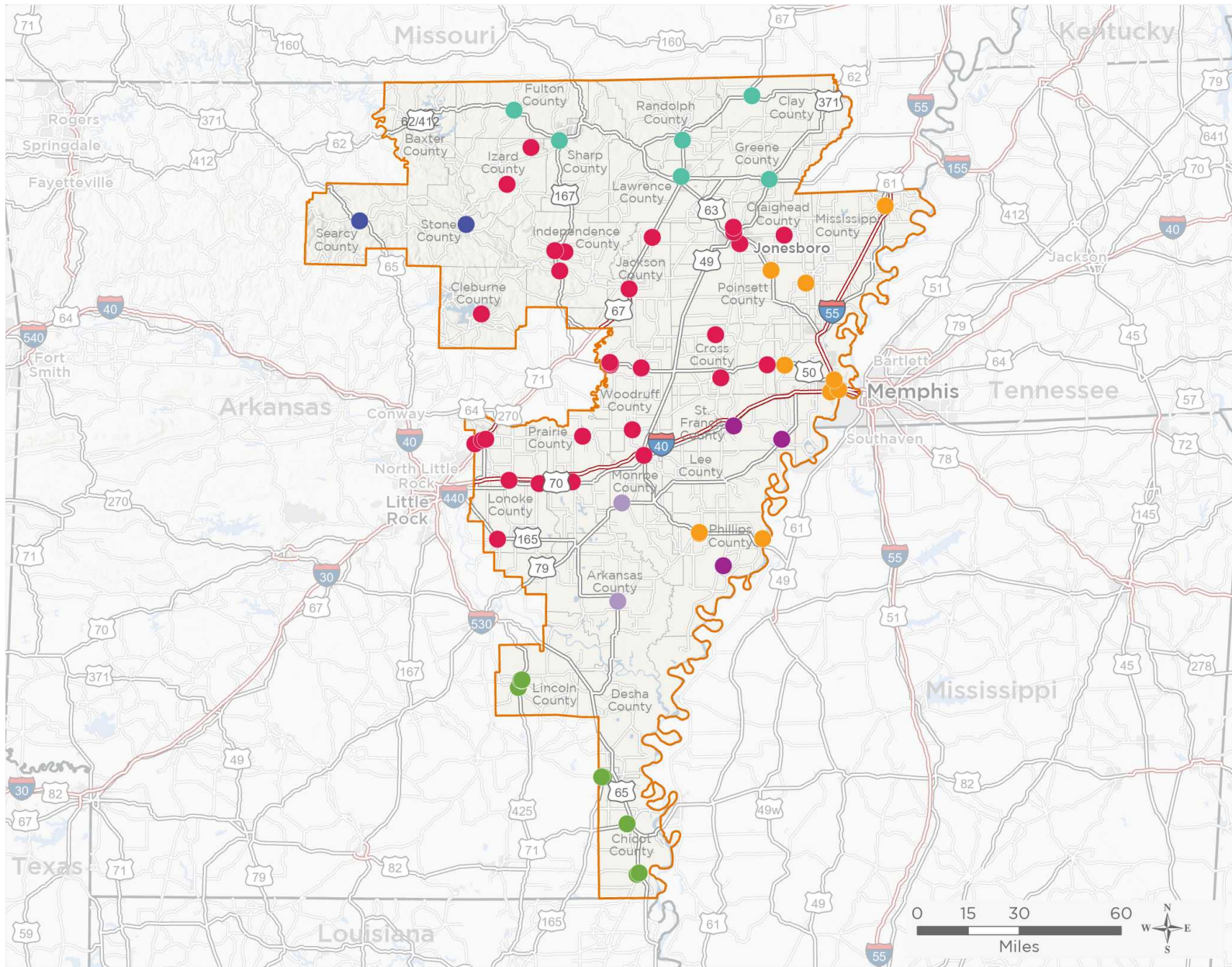
NATIONAL ASSOCIATION OF
Community Health Centers

Representative Rick Crawford

117th United States Congress

Arkansas's 1ST Congressional District

The 7 federally-funded health center organizations with a presence in Arkansas's 1st Congressional District leverage **\$34,670,414** in federal investments to serve **149,036** patients.



- Federally-funded site (each color represents one organization)
- 117th Congressional District Boundaries
- County Boundaries
- Major Highways
- Highways
- Major Roads
- City or Town

62

NUMBER OF DELIVERY SITES IN CONGRESSIONAL DISTRICT

Notes | Delivery sites represent locations of organizations funded by the federal Health Center Program. Some locations may overlap due to scale or may otherwise not be visible when mapped. Federal investments represent the total funding from the federal Health Center Program to grantees with a presence in the state in 2019.

Sources | Federally-Funded Delivery Site Locations: data.HRSA.gov, November 16, 2020.
Health Center Patients and Federal Funding | 2019 Uniform Data System, Bureau of Primary Health Care, HRSA.

© National Association of Community Health Centers, 2021. For more information, please contact federalaffairs@nachc.org.



62

NUMBER OF DELIVERY SITES IN CONGRESSIONAL DISTRICT

(main organization in bold)

● **1ST CHOICE HEALTHCARE, INC.**

- 1st Choice Healthcare Ash Flat - 308 Highway 62 W Ash Flat, AR 72513-9415
- 1st Choice Healthcare Corning - 1300 Creason Rd Corning, AR 72422-1716
- 1st Choice Healthcare Paragould - 1 Medical Dr Paragould, AR 72450-4017
- 1st Choice Healthcare Pocahontas - 141 Betty Dr Pocahontas, AR 72455-3602
- 1st Choice Healthcare Salem - US-62 & W 412 Salem, AR 72576
- 1st Choice Healthcare Walnut Ridge - 201 Colonial Dr Walnut Ridge, AR 72476-1410

● **ARCARE**

- ARCARE - 10 - 400 Highway 64 E Augusta, AR 72006-5150
- ARCARE - 17 - 821 E Park St # 70 Carlisle, AR 72024-9024
- ARCARE - 18 - 227 Pine Bluff Hwy England, AR 72046-2234
- ARCARE - 20 - 125 Oak St Cotton Plant, AR 72036-5089
- ARCARE - 22 - 2816 Fox Meadow Ln Jonesboro, AR 72404-9346
- ARCARE - 23 - 805 Third St Horseshoe Bend, AR 72512-3736
- ARCARE - 25 - 5787 Highway 64 Parkin, AR 72373-9003
- ARCARE - 29 - 800 Main St Augusta, AR 72006-2449
- ARCARE - 30 - 405 Highway 11 N Des Arc, AR 72040-3140
- ARCARE - 35 - 1175 Vine St Batesville, AR 72501-3526
- ARCARE - 40 - 705 Highway 63 N Hazen, AR 72064-8054
- ARCARE - 45 - 114 Ray St Newport, AR 72112-4260
- ARCARE - 46 - 5830 Highway 5 Cabot, AR 72023-7328
- ARCARE - 48 - 4100 Harrison St Batesville, AR 72501-9419
- ARCARE - 50 - 801 N Edmonds Ave Mccrory, AR 72101-8279
- ARCARE - 55 - 1530 N Church St Jonesboro, AR 72401-1515
- ARCARE - 60 - 601 Julia Ave E Wynne, AR 72396-3506
- ARCARE - 65 - 1009 Highway 18 Lake City, AR 72437-9622
- ARCARE - 85 - 1511 Highway 25B Heber Springs, AR 72543-1701
- ARCARE - 90 - 300 Main St Swifton, AR 72471-8809
- ARCARE - 93 - 105 N Jackson St Cabot, AR 72023-3058
- ARCARE-100 - 54 Tate Springs Rd Melbourne, AR 72556-8633
- ARCARE-120 - 908 N Edmonds Ave Mccrory, AR 72101-8073
- ARCARE-26 - 2624 Highway 42 Cherry Valley, AR 72324-8674
- ARCARE-27 Mobile Unit - 623 N 9th St Augusta, AR 72006-2129
- ARCARE-41 - 2450 Batesville Blvd Southside, AR 72501-7782
- ARCARE-47 - 1310 N Center St Lonoke, AR 72086-2011
- ARCARE-59 - 416 E Washington Ave Jonesboro, AR 72401-3108
- ARCARE-70 - 615 N Main St Brinkley, AR 72021-2507
- ARCARE-89 - 502 Richie Rd Cabot, AR 72023-3309

● **BOSTON MOUNTAIN RURAL HEALTH CENTER, INC.**

- Boston Mountain Rural Health Center - 2263 Highway 65 N Marshall, AR 72650
- Boston Mountain Rural Health Center-Mt View - 322 Dogwood Hollow Rd Mountain View, AR 72560-8626



62

NUMBER OF DELIVERY SITES IN CONGRESSIONAL DISTRICT

(main organization in bold)

EAST ARKANSAS FAMILY HEALTH CENTER, INC.

ASU Mid South Community College - 2000 W Broadway St Trlr I West Memphis, AR 72301-3829
Earle Family Health Center - 216 Arkansas St Earle, AR 72331-2217
East Arkansas Family Health Center - Marvell - 1008 W Main St Marvell, AR 72366-9486
East Arkansas Family Health Center, Inc. - 900 N 7th St West Memphis, AR 72301-2001
East Arkansas Family Health Ctr - 102 W Broad St Lepanto, AR 72354-2200
Healthy Partners - 605 N 2nd St Blytheville, AR 72315-2034
Helena Family Health Center - 513 Porter St Helena, AR 72342-3217
Marion School District School Based Health Center - 1 Patriot Dr Marion, AR 72364-2408
Marvell-Elaine School Based Health Center - 1018 US-49 Marvell, AR 72366
Truman Family Health Center - 417 W Main St Trumann, AR 72472-3116

LEE COUNTY COOPERATIVE CLINIC

Hughes Clinic - 503 S Broadway St Hughes, AR 72348-9701
Lakeview Area Clinic - 14066 AR-44 Helena, AR 72342
Madison Area Clinic - 509 Jackson St Madison, AR 72359-7000

MAINLINE HEALTH SYSTEMS INC

Dermott Medical and Dental Clinic - 300 S School St Dermott, AR 71638-2127
Dermott School Clinic - 525 E Speedway St Dermott, AR 71638-2322
Eudora Clinic - 579 E Beouff St Eudora, AR 71640-3090
Eudora Elementary Clinic - 566 S Mabry St Eudora, AR 71640-2941
Jimmy Brown Elementary - SCSD - 310 Ashley St Star City, AR 71667-4814
Lakeside School - 360 W Highway 82 Lake Village, AR 71653-7501
Star City Community Health Center - 110 N Drew St Star City, AR 71667-5704
Star City Dental - 557 Kirkwood Rd Star City, AR 71667-8843
Star City High School Clinic - 206 Cleveland St Star City, AR 71667-5218

MID-DELTA HEALTH SYSTEMS INC

Mid Delta Health Center - 245 Madison St Clarendon, AR 72029-2706
Mid-Delta Health Systems, Inc. - DeWitt - 1940 S Whitehead Dr Dewitt, AR 72042-2906