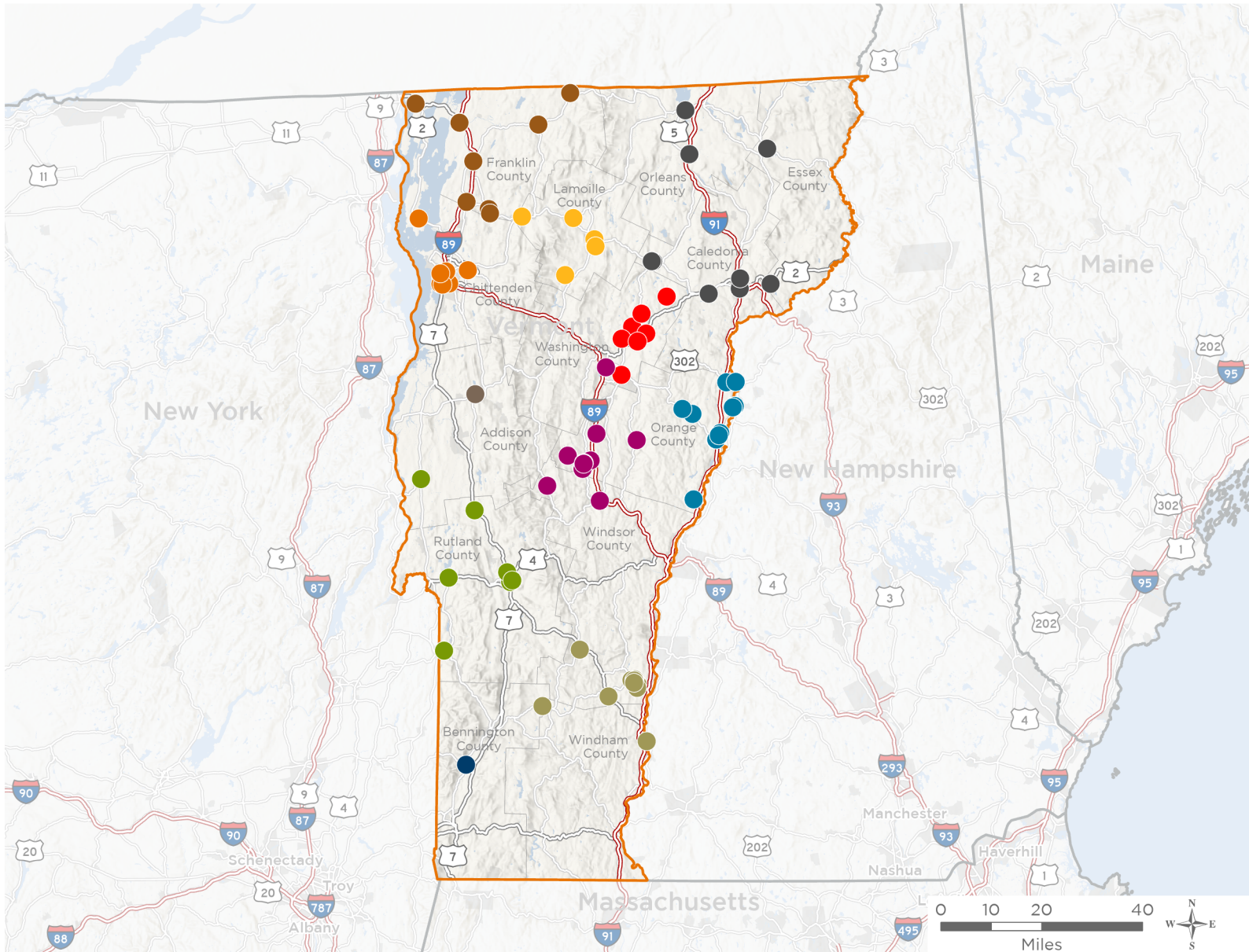


### Vermont's **At Large** Congressional District

The 11 federally-funded health center organizations with a presence in Vermont's At Large Congressional District leverage **\$24,372,053** in federal investments to serve **198,334** patients.



**97**

**NUMBER OF DELIVERY SITES  
IN CONGRESSIONAL DISTRICT**

- Federally-funded Delivery Site (each color represents one organization)
- Health Center Program Look-Alikes
- 119th Congressional District Boundaries
- County Boundaries
- Interstates
- Highways
- Populated Places
- Major Roads

Notes | Delivery sites represent locations of organizations funded by the federal Health Center Program. Health Center Program Look-Alikes are community-based health care providers that meet the requirements of the HRSA Health Center Program, but do not receive Health Center Program funding. Some locations may overlap due to scale or may otherwise not be visible when mapped. Federal investments represent the total funding from the federal Health Center Program to grantees with a presence in the state in 2023.

Sources | Federally-Funded Delivery Site Locations and Health Center Program Look-Alikes: data.HRSA.gov, November 2024. Health Center Patients and Federal Funding | 2024 Uniform Data System, Bureau of Primary Health Care, HRSA.



97

## NUMBER OF DELIVERY SITES IN CONGRESSIONAL DISTRICT

(main organization in bold)

### ● **BATTENKILL VALLEY HEALTH CENTER, INC.**

Battenkill Valley Health Center Inc. | 9 Church St Arlington, VT 05250-4457

Battenkill Valley Health Center, Inc. | 18 Church St Arlington, VT 05250-4457

### ● **COMMUNITY HEALTH CENTERS OF BURLINGTON, INC.**

Burlington Hlth & Rehab Center | 300 Pearl St Burlington, VT 05401-8531

Community Health Centers - Champlain Islands | 52 Community Ln South Hero, VT 05486-4418

Community Health Centers - Essex | 87 Main St Essex Junction, VT 05452-3234

Community Health Centers - Good Health | 368 Dorset St STE 1 South Burlington, VT 05403-6236

Community Health Centers - Pearl Street | 179 Pearl St Burlington, VT 05401-3704

Community Health Centers - Riverside | 617 Riverside Ave Burlington, VT 05401-1601

Community Health Centers - Safe Harbor | 184 S Winooski Ave Burlington, VT 05401-4535

Community Health Centers - South End | 789 Pine St Burlington, VT 05401-4924

Community Health Centers - Winooski | 32B Malletts Bay Ave Winooski, VT 05404-1911

LUND Family Center | 76 Glen Rd Burlington, VT 05401-4131

School-Based Dental Center at the Integrated Arts Academy (IAA) | 6 Archibald St Burlington, VT 05401-4220

### ● **COMMUNITY HEALTH CENTERS OF THE RUTLAND REGION, INC.**

Allen Pond Community Health Center | 71 Allen St STE 403 Rutland, VT 05701-4570

Brandon Medical Center | 420 Grove St Brandon, VT 05733-9062

Castleton Family Health Center/CHCRR Admin | 275 Route 30 N Bomoseen, VT 05732-9647

CHCRR Pediatric Dental | 69 Allen St, Ste 7 Rutland, VT 05701-4564

CHCRR Pediatrics | 1 General Wing Rd Rutland, VT 05701-4681

CHCRR Shoreham Family Health Center | 2987 Vt Route 22A Shoreham, VT 05770-9728

Community Dental | 69 Allen St, Ste 10 Rutland, VT 05701-4564

Community Health North Main Street | 231 N Main St Rutland, VT 05701-2412

Mettowee Valley Family Health Center | 278 Vt Route 149 West Pawlet, VT 05775-9798

Rutland Community Health Center | 215 Stratton Rd Rutland, VT 05701-4621

### ● **FIVE-TOWN HEALTH ALLIANCE, INC.**

MCH Mobile Health Unit | 61 Pine St BLDG 4 Bristol, VT 05443-1043

Mountain Community Health | 61 Pine St BLDG 4 Bristol, VT 05443-1043

### ● **GIFFORD HEALTH CARE, INC.**

Bethel Health Center | 1823 Vt Rte 107 Bethel, VT 05032-9324

Braintree Elementary School | 66 Bent Hill Rd Randolph, VT 05060-8810

Brookfield Elementary School | 1728 Ridge Rd Brookfield, VT 05036-9778

Chelsea Health Center | 356 Vt Rte 110 Chelsea, VT 05038-8993

Gifford Health Center at Berlin | 2418 Airport Rd STE 1 Barre, VT 05641-8702

Gifford Pediatric and Adolescent Medicine | 40 S Main St Randolph, VT 05060-1377



97

### NUMBER OF DELIVERY SITES IN CONGRESSIONAL DISTRICT

(main organization in bold)

Gifford Primary Care | 44 S Main St Randolph, VT 05060-1381  
Kingwood Health Center | 1422 Vt Route 66 Randolph, VT 05060-7718  
Randolph Elementary School | 40 Ayers Brook Rd Randolph, VT 05060-1012  
Randolph Technical Career Center | 17 Forest St Randolph, VT 05060-1006  
Randolph Union Middle/High School | 15 Forest St Randolph, VT 05060-1006  
Rochester Health Center | 235 S Main St Rochester, VT 05767-9683

#### LAMOILLE HEALTH PARTNERS INC

Johnson Elementary School | 57 College HI Johnson, VT 05656-9746  
Lamoille Health Behavioral Health & Wellness | 607 Washington Hwy Morrisville, VT 05661-8652  
Lamoille Health Family Dentistry | 66 Morrisville Plz Morrisville, VT 05661-4482  
Lamoille Health Family Dentistry Mobile Unit | 609 Washington Hwy Morrisville, VT 05661-8652  
Lamoille Health Family Medicine - Cambridge | 272 N Main St, #101 Cambridge, VT 05444-9810  
Lamoille Health Family Medicine - Morrisville | 609 Washington Hwy Morrisville, VT 05661-8652  
Lamoille Health Family Medicine - Stowe | 1878 Mountain Rd STE 3 Stowe, VT 05672-4775

#### LITTLE RIVERS HEALTH CARE

Blue Mountain Union School | 2420 Route 302 Wells River, VT 05081-9750  
Bradford | 437 S Main St Bradford, VT 05033-9196  
Bradford Elementary School | 143 Fairground Rd Bradford, VT 05033-9040  
East Corinth | 720 Village Rd East Corinth, VT 05040-9783  
Little Rivers Health Care. Inc. Administration | 146 Mill St Bradford, VT 05033-4456  
LRHC Newbury | 4628 Main St S Newbury, VT 05051-9712  
Newbury Elementary School | 214 Pulaski St Newbury, VT 05051  
Oxbow High School | 36 Oxbow Dr Bradford, VT 05033-9037  
Thetford Elementary School | 2689 Route 113 Thetford Center, VT 05075  
Valley Vista | 23 Upper Pln Bradford, VT 05033-9016  
Waits River Valley School | 6 Waits River Vly School Rd East Corinth, VT 05040-9776  
Wells River | 65 Main St N Wells River, VT 05081-9692

#### NORTHEAST WASHINGTON COUNTY COMMUNITY HEALTH INC

Barre Dental Clinic | 248 S Main St Barre, VT 05641-4812  
Cabot Health Services SBHC | 25 Common Rd Cabot, VT 05647-9731  
Calais Elementary School | 321 Lightening Ridge Rd Plainfield, VT 05667-9318  
Caledonia Central Supervisory Union Twinfield School | 106 Nasmith Brook Rd Plainfield, VT 05667-9060  
East Montpelier Elementary School | 665 Vincent Flats Rd E Montpelier, VT 05651-4405  
Maplehill School | E Hill Rd Plainfield, VT 05667-9725  
The Health Center | 157 Towne Ave Plainfield, VT 05667-9425  
Vermont Dental Care Mobile | 157 Towne Ave, #320 Plainfield, VT 05667-9425





97

**NUMBER OF DELIVERY SITES IN  
CONGRESSIONAL DISTRICT**

(main organization in bold)

● **NORTHERN COUNTIES HEALTH CARE, INC.**

Concord Health Center | 201 Main St Concord, VT 05824-9825  
Danville Health Center | 26 Cedar Ln Danville, VT 05828-9751  
Hardwick Area Health Center | 4 Slapp HI Hardwick, VT 05843-9300  
Island Pond Dental Center | 82 Maple St Island Pond, VT 05846  
Island Pond Health Center | 82 Maple St Island Pond, VT 05846  
Northern Counties Dental Center | 151 N Main St Hardwick, VT 05843-7065  
Northern Express Care - St. Johnsbury | 457 Railroad St STE 2 St Johnsbury, VT 05819-1643  
Northern Express Care Newport | 137 Main St STE 102 Newport, VT 05855-4415  
Orleans Dental Center | 11 Union St Orleans, VT 05860-1218  
St. Johnsbury Community Health Center | 185 Sherman Dr Saint Johnsbury, VT 05819-9811

● **SPRINGFIELD MEDICAL CARE SYSTEMS, INC.**

Chester Dental Center | 55 VT-11 Chester, VT 05143-9280  
Dr. Delores Barbeau Mobile Unit | 100 River St Springfield, VT 05156-2930  
Edgar May Health and Recreation Center | 140 Clinton St Springfield, VT 05156-3304  
Elm Hill School Health Center | 10 Hoover St Springfield, VT 05156-2425  
Ludlow Health Center | 1 Elm St Ludlow, VT 05149-1301  
Mountain Valley Health Center | 38 Vt Route 11 Londonderry, VT 05148-9555  
Riverside Middle School Health Center | 13 Fairground Rd Springfield, VT 05156-2112  
Rockingham Health Center | 1 Hospital Ct Bellows Falls, VT 05101-1448  
Springfield Health Center | 100 River St Springfield, VT 05156-2930  
Springfield High School Health Center | 303 South St Springfield, VT 05156-3226  
Union Street School Health Center | 43 Union St Springfield, VT 05156-3133

● **THE RICHFORD HEALTH CENTER, INC**

Alburgh Health Center | 64 Industrial Park Rd Alburgh, VT 05440  
Enosburg Health Center | 382 Main St Enosburg Falls, VT 05450-6008  
Fairfax Health Center | 1199 Main St Fairfax, VT 05454-9530  
Fairfax Pharmacy | 997 Main St Fairfax, VT 05454-9901  
Georgia Health Center | 4178 Highbridge Rd Fairfax, VT 05454-5446  
NOTCH Pharmacy | 44 Main St, Ste 200 Richford, VT 05476-1141  
NOTCH Primary Care | 12 Crest Rd Saint Albans, VT 05478-9701  
Richford Dental Clinic | 44 Main St STE 400 Richford, VT 05476-1141  
Richford Health Center | 44 Main St Richford, VT 05476-1153  
St Albans Health Center | 3 Crest Rd Saint Albans, VT 05478-9753  
Swanton Health Center | 26 Canada St Swanton, VT 05488-1335  
Swanton Rexall | 13 York St Swanton, VT 05488-1320