

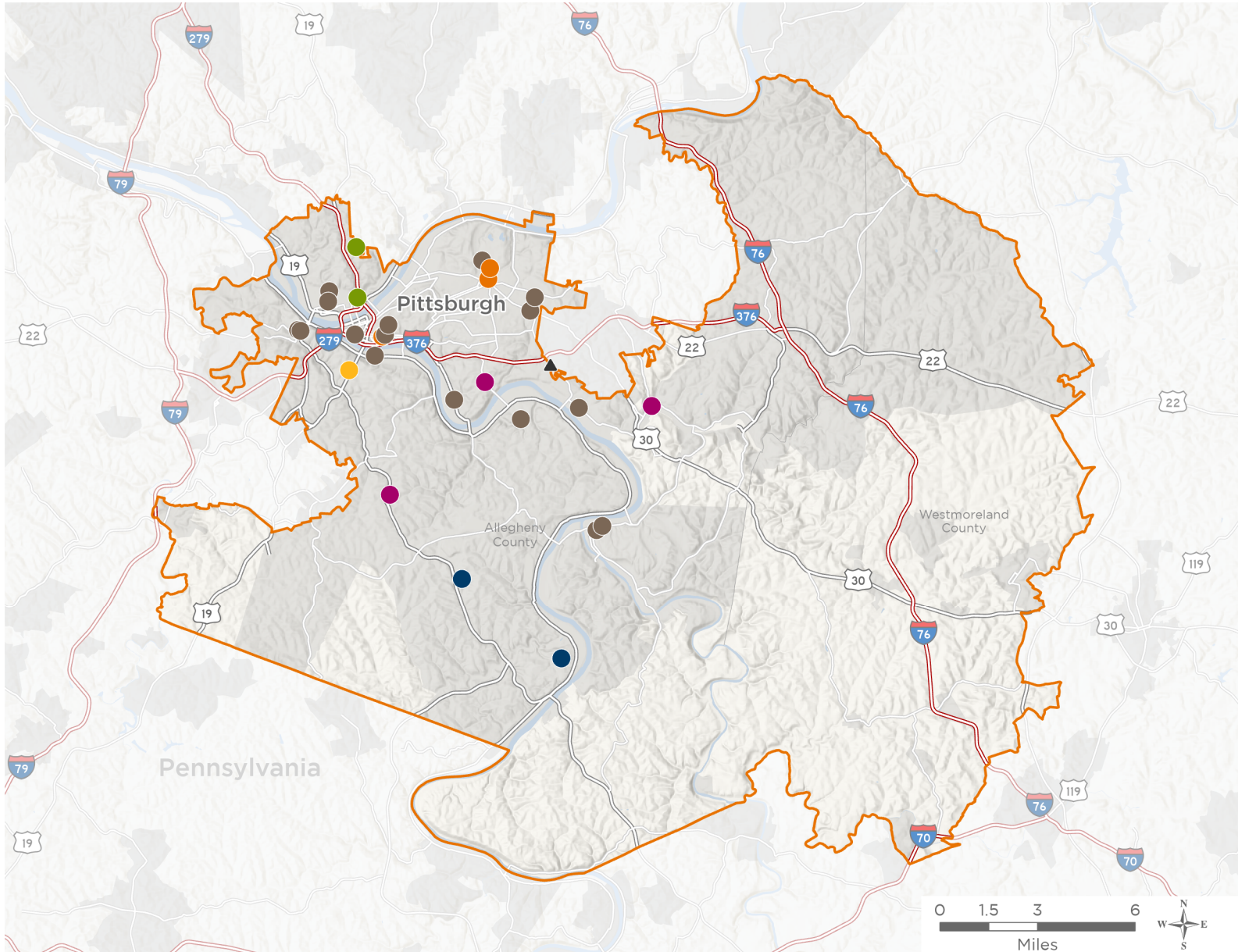


NATIONAL ASSOCIATION OF
Community Health Centers®

Representative Summer Lee 119th United States Congress

Pennsylvania's **12TH** Congressional District

The 6 federally-funded health center organizations with a presence in Pennsylvania's 12th Congressional District leverage **\$20,589,201** in federal investments to serve **56,591** patients.



- Federally-funded Delivery Site (each color represents one organization)
- Health Center Program Look-Alikes
- 119th Congressional District Boundaries
- County Boundaries
- Populated Places
- Interstates
- Highways
- Major Roads

28

**NUMBER OF DELIVERY SITES
IN CONGRESSIONAL DISTRICT**

Notes | Delivery sites represent locations of organizations funded by the federal Health Center Program. Health Center Program Look-Alikes are community-based health care providers that meet the requirements of the HRSA Health Center Program, but do not receive Health Center Program funding. Some locations may overlap due to scale or may otherwise not be visible when mapped. Federal investments represent the total funding from the federal Health Center Program to grantees with a presence in the state in 2023.

Sources | Federally-Funded Delivery Site Locations and Health Center Program Look-Alikes: data.HRSA.gov, November 2024. Health Center Patients and Federal Funding | 2024 Uniform Data System, Bureau of Primary Health Care, HRSA.



28

NUMBER OF DELIVERY SITES IN CONGRESSIONAL DISTRICT

(main organization in bold)

CORNERSTONE CARE INC

Cornerstone Care Community Health Center of Clairton | 559 Miller Ave Clairton, PA 15025-1746

Cornerstone Care Dental Center of West Mifflin | 500 N Lewis Run Rd STE 128 West Mifflin, PA 15122-3075

EAST LIBERTY FAMILY HEALTH CARE CENTER, INC.

East Liberty Family Healthcare Center- Uptown/Hill District | 1425 Forbes Ave Pittsburgh, PA 15219-5140

East Liberty Medical Office | 6023 Harvard St Pittsburgh, PA 15206-3053

Lincoln-Lemington Medical And Dental Office | 7157 Mary Peck Bond Place Pittsburgh, PA 15206

NORTH SIDE CHRISTIAN HEALTH CENTER

North Side Christian Health Center | 816 Middle St Pittsburgh, PA 15212-4915

North Side Christian Health Center at Northview | 525 Mount Pleasant Rd Pittsburgh, PA 15214-2427

PRIMARY CARE HEALTH SERVICES INC

AbsoluteCare Pittsburgh | 7301 Penn Ave Pittsburgh, PA 15208-2528

Braddock Health Center | 404 Braddock Ave Braddock, PA 15104-1804

Community Human Services/Wood Street Commons | 301 3rd Ave Pittsburgh, PA 15222-1924

East End Community Health Center | 745 N Negley Ave Pittsburgh, PA 15206-2059

Family Links | 1601 5th Ave Pittsburgh, PA 15219-5537

Hazelwood Health Center | 4918 2nd Ave Pittsburgh, PA 15207-1623

Hill House Health Center | 1835 Centre Ave Pittsburgh, PA 15219-4305

McKeesport Downtown Housing | 523 Sinclair St McKeesport, PA 15132-3029

McKeesport Family Health Center | 627 Lysle Blvd McKeesport, PA 15132-2524

PHCUP/Birmingham Clinic | 44 S 9th St Pittsburgh, PA 15203-1119

Pleasant Valley | 1601 Brighton Rd Pittsburgh, PA 15212-3838

PRIMARY CARE HEALTH SERVICES, INC. Alma Illery Medical Center | 7227 Hamilton Ave Pittsburgh, PA 15208-1814

Salvation Army Harbor Light | 865 W North Ave Pittsburgh, PA 15233-1616

Steel Valley Family Hlth Center | 1800 West St Homestead, PA 15120-2563

West End Dental Office | 441 S Main St Pittsburgh, PA 15220-5540

West End Health Center | 415 Neptune St Pittsburgh, PA 15220-5516

SQUIRREL HILL HEALTH CENTER

Mobile Medical Unit | 4516 Browns Hill Rd Pittsburgh, PA 15217-2917

SHHC Brentwood | 103 Towne Square Way Brentwood, PA 15227-3254

SHHC Turtle Creek | 519 Penn Ave Turtle Creek, PA 15145-2082

Squirrel Hill Health Center | 4516 Browns Hill Rd Pittsburgh, PA 15217-2917

STO-ROX NEIGHBORHOOD HEALTH COUNCIL, INC.

Hilltop Community HealthCare Center | 151 Ruth St Pittsburgh, PA 15211-2384



NATIONAL ASSOCIATION OF
Community Health Centers®

Representative Summer Lee 119th United States Congress

Pennsylvania's **12TH** Congressional District

28

NUMBER OF DELIVERY SITES IN CONGRESSIONAL DISTRICT

(main organization in bold)

▲ **HEALTH CENTER PROGRAM LOOK-ALIKES**

Health Center Program Look-Alikes are community-based health care providers that meet the requirements of the HRSA Health Center Program, but do not receive Health Center Program funding.

METRO FAMILY PRACTICE, INC

Metro Community Health Center | 1789 S Braddock Ave STE 395 Pittsburgh, PA 15218-1868

Metro Community Health Center | 1789 S Braddock Ave, Ste 410 Pittsburgh, PA 15218-1881

Metro Community Health Center Mobile Clinic | 1789 S Braddock Ave, Ste 410 Pittsburgh, PA 15218-1881