



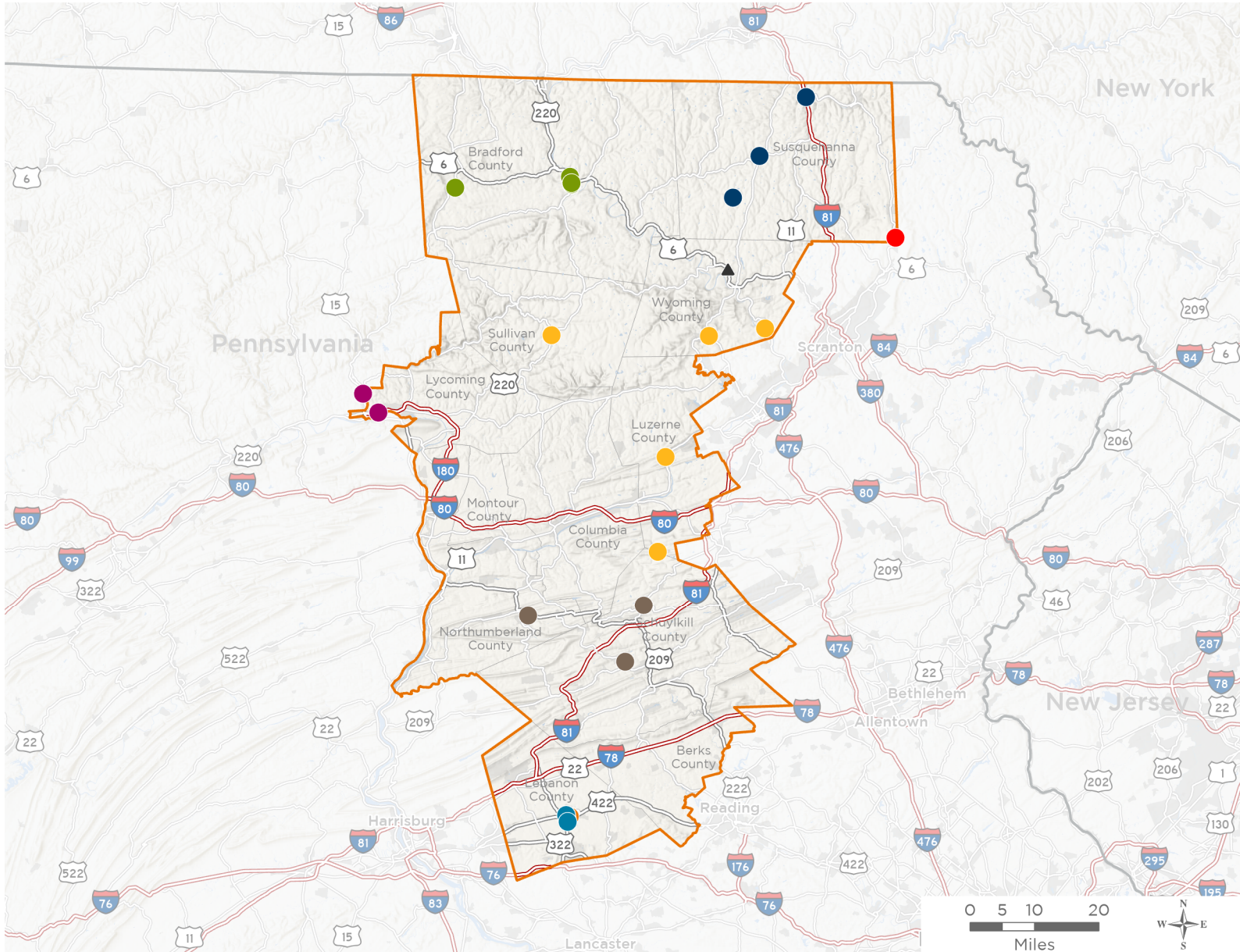
NATIONAL ASSOCIATION OF
Community Health Centers®

Representative Dan Meuser

119th United States Congress

Pennsylvania's **9TH** Congressional District

The 8 federally-funded health center organizations with a presence in Pennsylvania's 9th Congressional District leverage **\$26,890,985** in federal investments to serve **256,198** patients.



24

**NUMBER OF DELIVERY SITES
IN CONGRESSIONAL DISTRICT**

- Federally-funded Delivery Site (each color represents one organization)
- Health Center Program Look-Alikes
- ▲ 119th Congressional District Boundaries
- County Boundaries
- Interstates
- Highways
- Populated Places
- Major Roads

Notes | Delivery sites represent locations of organizations funded by the federal Health Center Program. Health Center Program Look-Alikes are community-based health care providers that meet the requirements of the HRSA Health Center Program, but do not receive Health Center Program funding. Some locations may overlap due to scale or may otherwise not be visible when mapped. Federal investments represent the total funding from the federal Health Center Program to grantees with a presence in the state in 2023.

Sources | Federally-Funded Delivery Site Locations and Health Center Program Look-Alikes: data.HRSA.gov, November 2024. Health Center Patients and Federal Funding | 2024 Uniform Data System, Bureau of Primary Health Care, HRSA.



24

NUMBER OF DELIVERY SITES IN CONGRESSIONAL DISTRICT

(main organization in bold)

B-K HEALTH CENTER INC.

Matthew W. Stahl Memorial Health Center | 498 S Main St STE D Montrose, PA 18801-1317

NEPA Community Health Care-Hallstead | 25066 State Route 11 Hallstead, PA 18822-8816

NEPA Community Health Care Elk Lake School District | 2380 Elk Lake School Rd Springville, PA 18844-7710

FAMILY FIRST HEALTH CORPORATION

Lebanon Center | 300 Willow St Lebanon, PA 17046-4871

NORTH PENN COMPREHENSIVE HEAL

Laurel Dental- Towanda at Progress Plaza | 1 Elizabeth St, Ste 6 Towanda, PA 18848-1629

Laurel Dental - Towanda | 346 York Ave Towanda, PA 18848-2021

Towanda Laurel Health Center | 410 Main St Towanda, PA 18848-1865

Troy Laurel Health Center | 45 Mud Creek Rd Troy, PA 16947-9529

PRIMARY HEALTH NETWORK

Schuylkill Community Health Center | 210 Sunbury St Minersville, PA 17954-1346

Shamokin Health Center | 531 N Franklin St Shamokin, PA 17872-6754

Shenandoah Health Center | 624 W Centre St Shenandoah, PA 17976-1403

RIVER VALLEY HEALTH

River Valley Health - Express and Specialty Care | 431 Hepburn St Williamsport, PA 17701-6122

River Valley Health - Mobile Dental Unit | 2950 Lycoming Creek Rd Williamsport, PA 17701-1081

River Valley Health - Williamsport Medical and Dental | 471 Hepburn St Williamsport, PA 17701-6122

RURAL HEALTH CORPORATION OF NORTHEASTERN PENNSYLVANIA

Black Creek Health Center | 75 Pineapple St Nuremberg, PA 18241

Exeter Township Medical Center | 2795 Sullivans Trl Falls, PA 18615-7949

Laporte Health Center | 217 King St Laporte, PA 18626

Monroe-Noxen Health Center | 2888 SR 29 S, Ste 2 Noxen, PA 18636-7854

Shickshinny Health Center | 26 N Main St Shickshinny, PA 18655-1302

UNION COMMUNITY CARE

Lebanon Dental | 101 S 9th St Lebanon, PA 17042-5108

Lebanon Medical and Pharmacy | 920 Church St Lebanon, PA 17046-4656

Lebanon Urgent Care (Behavioral and Physical Health) | 960 Church St Lebanon, PA 17046-4656

Union Community Care at Lebanon VIM | 711 S 8th St Lebanon, PA 17042-6750

WAYNE MEMORIAL COMMUNITY HEALTH CENTERS

Forest City Family Health Center | 100 Dundaff St Forest City, PA 18421-1317



NATIONAL ASSOCIATION OF
Community Health Centers®

Representative Dan Meuser
119th United States Congress

Pennsylvania's **9TH** Congressional District

24

**NUMBER OF DELIVERY SITES IN
CONGRESSIONAL DISTRICT**

(main organization in bold)

▲ **HEALTH CENTER PROGRAM LOOK-ALIKES**

Health Center Program Look-Alikes are community-based health care providers that meet the requirements of the HRSA Health Center Program, but do not receive Health Center Program funding.

THE WRIGHT CENTER MEDICAL GROUP

The Wright Center for Community Health Tunkhannock Practice | 5950 Sr 6 Tunkhannock, PA 18657-7905